

How to fix blue screen error 'Critical Process Died' in Windows 10

The frightening blue screen of death, known as BSOD, has more than 500 error codes but Critical Process Died stops the most recently. Although Windows 10 users are less prone to blue screen errors than previous versions of the operating system, they do occur and cause annoyance.

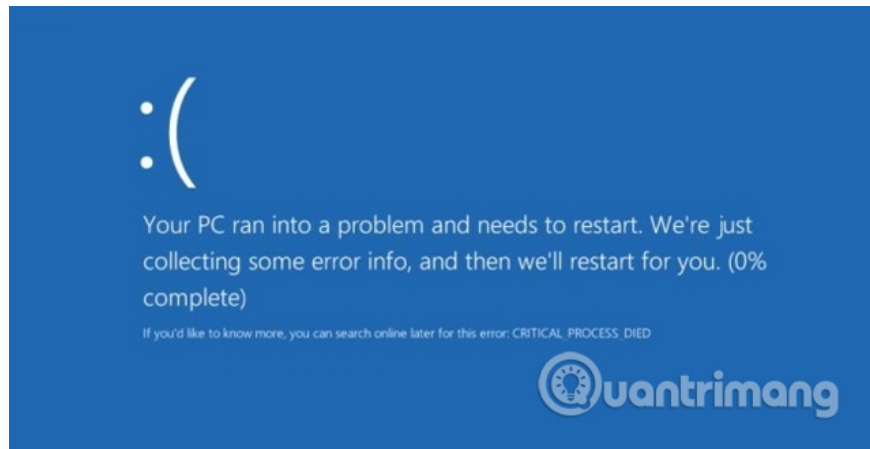
The frightening "blue screen", known as BSOD, has more than 500 error codes but Critical Process Died stops most recently. Although Windows 10 users are less prone to blue screen errors than previous versions of the operating system, they do occur and cause annoyance.

In this article, TipsMake.com will teach you some ways to fix 'Critical Process Died', one of the causes of obnoxious blue screen errors on Windows.

How to fix blue screen error "Critical Process Died" in Windows 10

1. What is the "Critical Process Died" stop error?
2. How to fix stop "Critical Process Died"
 1. Run hardware and device troubleshooting tools
 2. Run the System File Checker tool
 3. Run antivirus software
 4. Run the Deployment Imaging and Servicing Management tool
 5. Update the driver
 6. Uninstall the recent Windows update
 7. Clean Boot implementation
 8. Restore the system
 9. Update BIOS

What is the "Critical Process Died" stop error?



An important process unexpectedly stopped mostly due to a blue screen of death because you will see the 0x000000EF error code on the blue error screen. Basically, the cause of this problem is a background process that Windows uses is broken. It may be completely stopped or the data has been modified incorrectly.

To find out more, it's hard to pinpoint the problem that caused the problem. Everything from drivers to memory errors can be the culprit. This blue screen error can only occur when playing a game, logging in to a computer, opening a certain application or when 'wake up' the computer from sleep mode. There are many reasons for the problem, which means you need to take a lot of corrective steps, take a closer look at the following troubleshooting steps.

1. 5 most common Windows errors and this is a fix

How to fix stop "Critical Process Died"

1. Run hardware and device troubleshooting tools

Before implementing more complex solutions, start with the simplest way. Windows now offers many professional troubleshooting tools, one of which is specifically designed to address hardware and device problems.

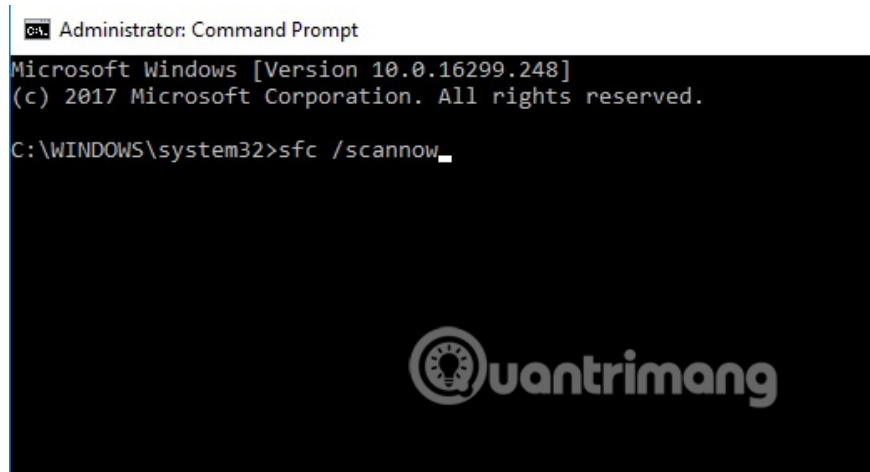
1. 13 useful troubleshooting tools for Windows 10

To run this tool, open the **Settings** application and go to **Update and Security > Troubleshoot** , scroll down and select **Hardware and Devices** , then click **Run the troubleshooter** . Your system will take a few minutes to scan and find the problem, then report its findings.

2. Run the System File Checker tool

The next step is to run the System File Checker tool. This is a well-known utility that can handle many types of Windows problems by fixing corrupted or incorrectly modified system files. In fact, this tool is not always useful, but many people run it more habitually than is necessary. However, in case of error code 0x000000EF, this is an important troubleshooting step.

To run the System File Checker tool, start the **Command Prompt** with admin rights. The easiest way to run this command line is to search for **cmd** , right click on the result and select **Run as administrator** .



```
Administrator: Command Prompt
Microsoft Windows [Version 10.0.16299.248]
(c) 2017 Microsoft Corporation. All rights reserved.
C:\WINDOWS\system32>sfc /scannow
```

When opening Command Prompt, type **sfc / scannow** and press **Enter** . This process may take a while to complete. After finishing, you will see a list of problems on the screen and steps to fix them. Be sure to restart your computer before continuing.

1. How to run SFC (System File Checker) Offline?

3. Run antivirus software

Stop errors can be caused by malware on the system. Malware can change system files and processes, making them unusable. You can use Windows Defender or third-party antivirus software and perform a full system scan.

1. How to kill viruses with Windows Defender Offline on Windows 10 Creators

4. Run the Deployment Imaging and Servicing Management tool

If the above does not fix the problem, you can switch to using the **Deployment Imaging and Servicing Management** tool (**DISM**) , which will repair the broken system image.


Tools featuring:

1. / ScanHealth,
2. / CheckHealth
3. / RestoreHealth

Here, we only care about the last feature. To use the DISM tool, open the **Command Prompt** as an admin using the same method. After opening the command line window, type **DISM / Online / Cleanup-Image / RestoreHealth** and press **Enter** .

```
Administrator: Command Prompt
Microsoft Windows [Version 10.0.16299.248]
(c) 2017 Microsoft Corporation. All rights reserved.

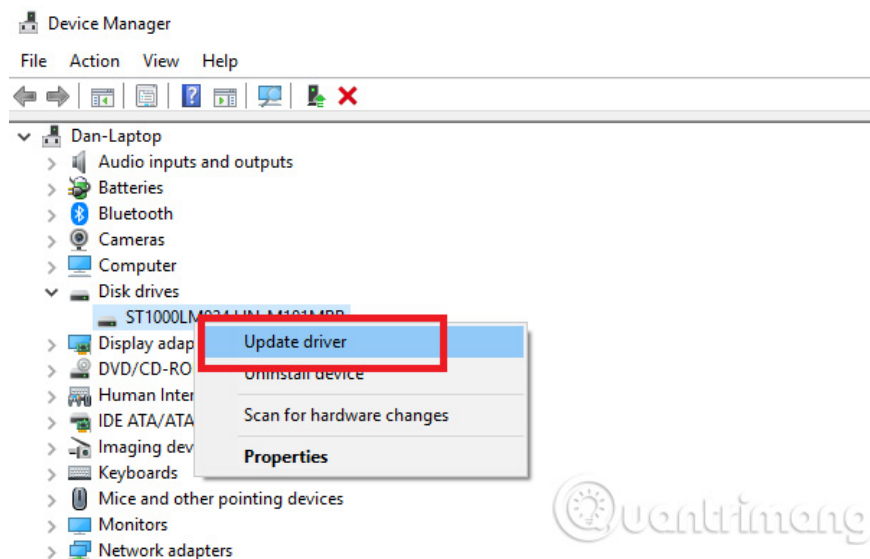
C:\WINDOWS\system32>sfc /scannowDISM /Online /Cleanup-Image /RestoreHealth
```



This process usually takes between 10 minutes and half an hour. You should not worry when the progress bar stops at 20% after a few minutes, this is normal behavior. After completing the scan, restart the computer.

5. Update the driver

An un-updated driver is one of the common causes of a stop error. Therefore, you should check to make sure the drivers are updated.



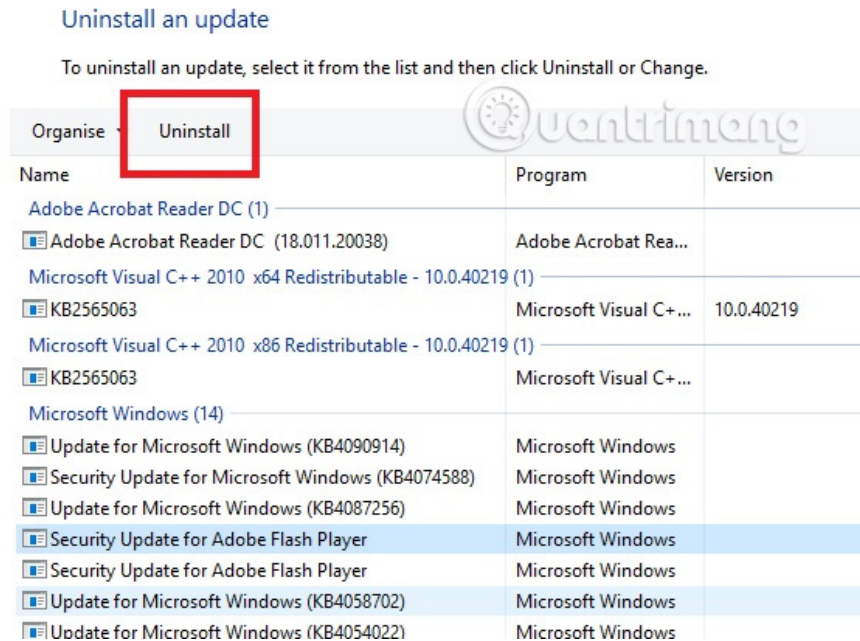
To check the status of the driver, right-click on the **Start** box and select **Device Manager** and look in the list of devices with a yellow exclamation mark next to it. If you see any device with such a sign, click on the device and select **Update Driver Software** from the context menu.

6. Uninstall the recent Windows update

If your problem is just beginning, a recent Windows update may be the cause. The fix is to remove the update and the implementation is relatively easy.

To uninstall the update, open the **Settings** application, go to **Update and Security**> **Windows Update**> **Update History**> **Uninstall Updates** . Select the update you want to remove from the system and then click the

Uninstall button on the same window.

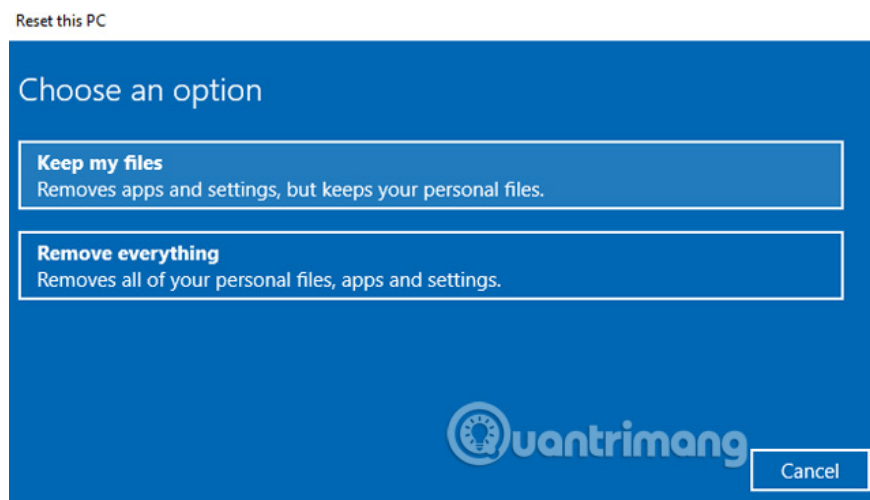


7. Clean Boot implementation

Clean boot is the boot mode that uses the minimum number of drivers, processes and programs. To perform clean boot, refer to the instructions in the article [How to perform Clean Boot on Windows 10/8/7](#).

8. Restore the system

You can try to restore the computer to its previous state using the System Restore tool. This option is only available when you have created restore points before a stop error problem occurs.



To use the System Restore tool, go to **Settings > Update & Security > Recovery > Reset this PC > Get Started > Keep Files** and follow the instructions on the screen.

1. Instructions on how to use System Restore on Windows

9. Update BIOS

Another method you can try is to update your computer's BIOS. Refer to the article [BIOS Upgrade Instructions](#) for how to do this. In fact there is still a last resort to reset or reinstall Windows and if this fails, you may be having a hardware problem.

If none of the above tips fix the problem of stopping you should bring it to the repair shop so that the professionals can do their job.

See more:

1. Instructions on how to fix blue screen error, cannot start when installing Microsoft patches
2. Prevent "blue screen errors" on Windows 8
3. How to fix blue screen error 0x7B INACCESSIBLE_BOOT_DEVICE after updating on Windows 10

You finished reading the article "**How to fix blue screen error 'Critical Process Died' in Windows 10**" edited by the [TipsMake](#) team. We hope this article has provided you with many useful tech tips and tricks. You can search for similar articles on tips and guides. Thank you for reading and for following us regularly.