

How to fix blue screen Critical Service Failed on Windows

Critical Service Failed Error is a blue screen error that prevents Windows operating system from working. This article will show you how to fix blue screen Critical Service Failed on Windows.

Critical Service Failed Error is a blue screen error that prevents Windows operating system from working. This error is usually caused by broken hardware or device driver problems. This article will show you how to fix blue screen Critical Service Failed on Windows.

How to fix blue screen Critical Service Failed on Windows

1. The cause of the error
 1. Incompatible device driver
 2. File system is broken
2. How to fix Critical Service Failed on Windows.
 1. How to fix Critical Service Failed with Easy Recovery Essentials software.
 2. How to fix Critical Service Failed on Windows XP
 3. How to fix Critical Service Failed error on Windows Vista
 4. How to fix Critical Service Failed on Windows 7
 5. How to fix Critical Service Failed error on Windows 8, 10

This error code is usually displayed in the Technical Information section and its error name (Critical Service Failed) at the top of the screen. If the blue screen shows any of the following phrases, you need to find a way to fix Critical Service Failed:

1. 0x0000005A
2. STOP: 0x0000005A
3. CRITICAL_SERVICE_FAILED

The phrase 'CRITICAL_SERVICE_FAILED' usually does not display on the error screen, but the error code only 0x0000005A.

The error screen will look like this:

```
A problem has been detected and Windows has been shut down to prevent damage
to your computer.

CRITICAL_SERVICE_FAILED

If this is the first time you've seen this Stop error screen,
restart your computer. If this screen appears again, follow
these steps:

Check to make sure any new hardware or software is properly installed.
If this is a new installation, ask your hardware or software manufacturer
for any Windows updates you might need.

If problems continue, disable or remove any newly installed hardware
or software. Disable BIOS memory options such as caching or shadowing.
If you need to use Safe Mode to remove or disable components, restart
your computer, press F8 to select Advanced Startup Options, and then
select Safe Mode.

Technical Information:

*** STOP: 0x0000005A (0x00000001, 0x00000001, 0x00000000, 0x00000000)

Collecting data for crash dump ...
Initializing disk for crash dump ...
Beginning dump for physical memory.
Dumping physical memory to disk: 100
Physical memory dump complete.
Contact your system admin or technical support group for further assistance.
```

The text above the error screen may vary depending on the version of Windows you use, but it all points to the same 0x0000005A error.

The cause of the error

1. Incompatible device driver

The main cause of this error is that the device driver is broken or not updated. This may occur after Windows updates, disk read / write errors, system degradation.

2. File system is broken

Another cause of Critical Service Failed error is that the main system file is corrupted or lost. This often happens due to virus attack, power failure or drive read / write errors.

How to fix Critical Service Failed on Windows.

1. How to fix Critical Service Failed with Easy Recovery Essentials software.

Easy Recovery Essentials has an Automated Repair integration tool that can fix 0x0000005A errors. You can refer to how to do this in the article [How to fix Winload.efi is missing on Windows](#).

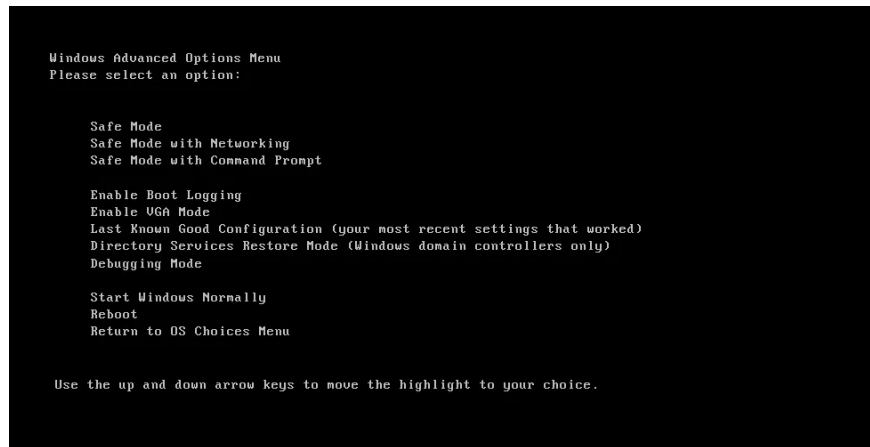
2. How to fix Critical Service Failed on Windows XP

Method 1. Remove the hardware or uninstall the device driver.

The main cause of Critical Service Failed error is hardware or device driver that is incompatible with Windows XP system. If you recently installed hardware or device drivers, follow the steps below:

Step 1 . Remove the hardware from the computer and reboot the system. You can remove other peripherals such as scanners, printers, USB from the computer just for the keyboard and mouse, then restart the computer.

Step 2 . Boot into Safe Mode and uninstall the device driver. To boot into Safe Mode, refer to the article Starting Safe Mode on Windows XP.



Method 2. Run the chkdsk command

To run chkdsk, follow these steps:

Step 1 . Insert the Windows XP installation CD into the computer.

Step 2 . Restart the computer and boot from the CD.

Step 3 . Press the **R** key to open the **Recovery Console** .

Step 4 . Enter admin password.

Step 5 . On the Command Prompt that appears, type the following command and press **Enter** .

```
chkdsk C: / r
```

Replace C: with the Windows XP drive letter installed.



How to 3. Run the sfc command

1. How to run SFC (System File Checker) Offline?

Similar to the above chkdsk command, the sfc command can fix 0x0000005A error on Windows XP. To run the sfc command, follow Steps 1 to 4 as above. 2. On the Command Prompt, enter the following command:

```
sfc / scannow / offbootdir = c: / offwindir = c: windows
```

Replace C: with the Windows XP installation drive letter.

3. How to fix Critical Service Failed error on Windows Vista

How to 1. Remove peripheral devices

If the above error is caused by a peripheral device (scanner, printer, USB drive, smartphone, tablet, etc.) that you have just installed on your computer, remove it but do not remove the keyboard and mouse, then restart the computer.

If using a laptop, remove it from the wall outlet if it is charging, do not use the battery, plug in the AC adapter and restart the computer.

Method 2. Access the Last Known Good Configuration mode

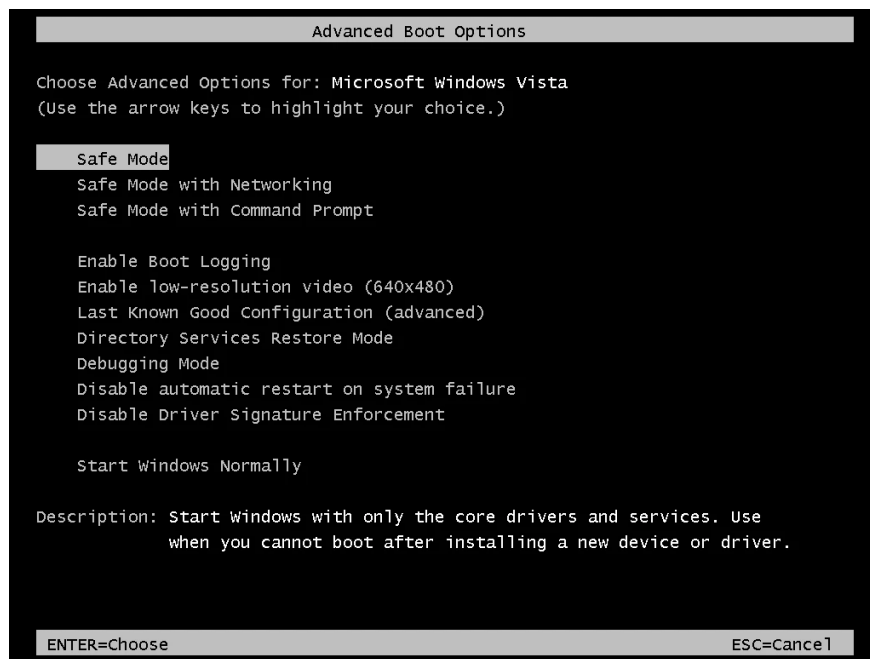
If the above does not solve the problem, try booting Windows Vista into Last Known Good Configuration mode. Follow these steps:

Step 1 . Restart the computer.

Step 2 . After the BIOS screen appears, press the **F8** key repeatedly before the Windows Vista logo appears.

Step 3 . When the boot menu appears, select **Last Known Good Configuration (Advanced)** .

Step 4 . Press **Enter** .



Method 3. Uninstall the driver

If 0x0000005A error is not caused by hardware failure, it may be due to device driver. If you recently installed the driver, uninstall it and restart the computer.

If you can't boot into Windows Vista due to a blue screen error, boot into Safe Mode and uninstall the driver.

To access Safe Mode, refer to the article "All About Windows Booting in Safe Mode".

How 4. Run Startup Repair

Windows Vista computers have a Startup Repair tool installed on the hard drive. If not installed, use the Windows Vista installation disc to access **S ystem Recovery Options> Startup Repair** .

To check if the system recovery tool is installed on the hard drive, follow the steps below:

Step 1. Restart the computer.

Step 2 . Press the **F8** key as soon as the computer restarts, before the Windows Vista logo appears on the screen.

Step 3 . On the **Advanced Boot Options** menu, find the **Repair your computer option** .

Step 4 . If yes, select that option and press **Enter** .

If there is no system recovery tool on your computer, follow the steps below:

Step 1 . Restart the computer.

Step 2 . Plug the Windows Vista installation disc into your computer.

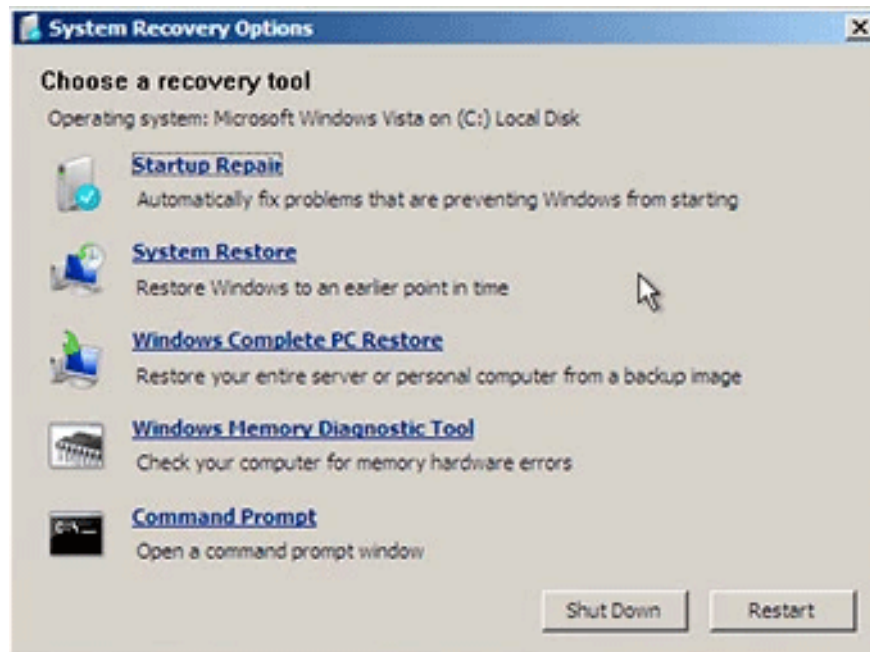
Step 3 . When you see **Press any key to boot from CD or DVD** . press any key to boot from CD / DVD.

Step 4 . Click **Repair your computer** on the **Install now** screen.



Step 5 . Select the operating system from the list that appears.

Step 6 . Click **Startup Repair** .



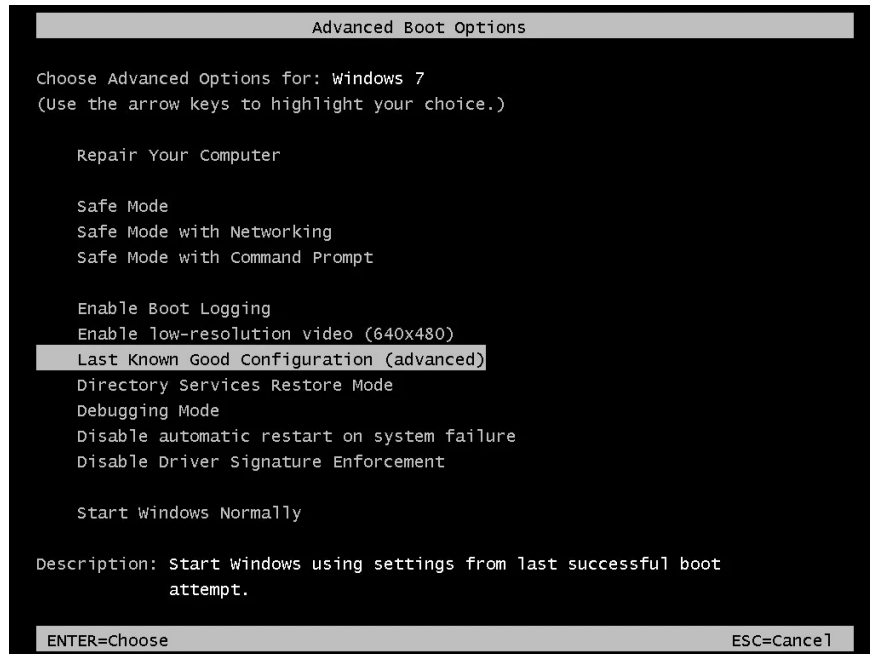
Step 7 . Follow the instructions on the screen.

4. How to fix Critical Service Failed on Windows 7

How to 1. Remove peripheral devices

Remove the peripheral devices and restart the computer.

Method 2. Boot into Last Known Good Configuration mode

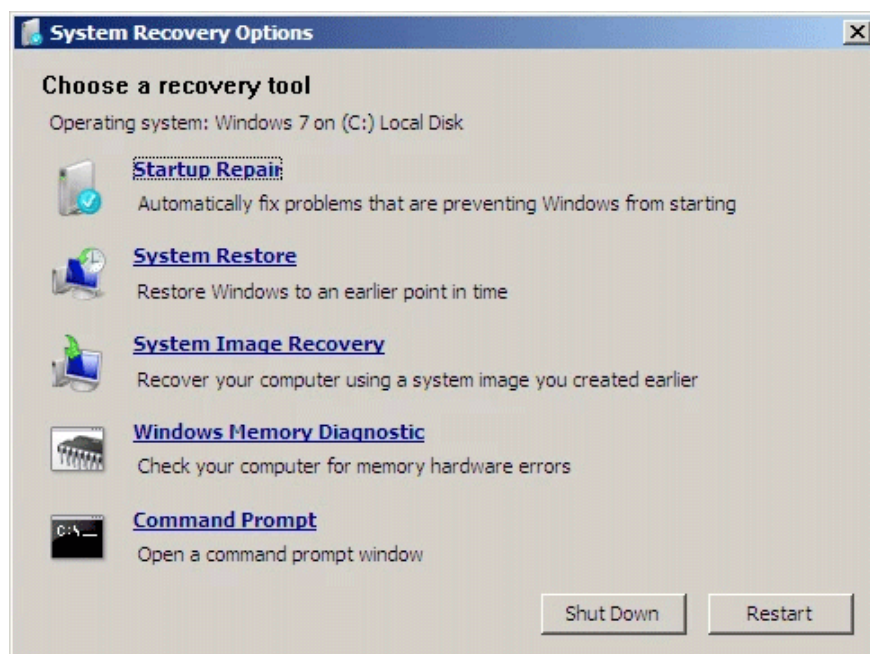


Do the same thing as Method 2 on Windows Vista.

Method 3. Uninstall device driver

Uninstall incompatible drivers on Windows 7. Boot into Safe Mode and uninstall the driver. Refer to the article [Enable Safe Mode in Windows 7](#).

Method 4. Use Startup Repair



Unlike Windows Vista, Windows 7 has the necessary system recovery tool on your hard drive to open the Startup Repair. Startup Repair automatically fixes non-booting problems of Windows 7. Refer to the article [How to use the Startup Repair tool to troubleshoot problems in Windows 7](#).

5. How to fix Critical Service Failed error on Windows 8, 10

Method 1. Uninstall device driver

Unlike on Windows Vista and Windows 7, uninstalling incompatible device drivers can fix 0x0000005A error. To perform driver uninstallation on Windows 8 or Windows 8.1, Windows 10, access Safe Mode to uninstall the driver from Control Panel. Refer to the article [Activating, using and disabling Safe Mode in Windows 8](#) and [How to access Safe Mode Windows 10 on startup](#).

Method 2. Remove the hardware temporarily from the computer

If you recently plugged in the hardware or peripheral into the computer, remove it and restart your Windows 8 or Windows 10 computer.

I wish you all success!

You finished reading the article "[How to fix blue screen Critical Service Failed on Windows](#)" edited by the [TipsMake](#) team. We hope this article has provided you with many useful tech tips and tricks. You can search for similar articles on tips and guides. Thank you for reading and for following us regularly.