

How to fix BCD boot error on Windows Server 2012

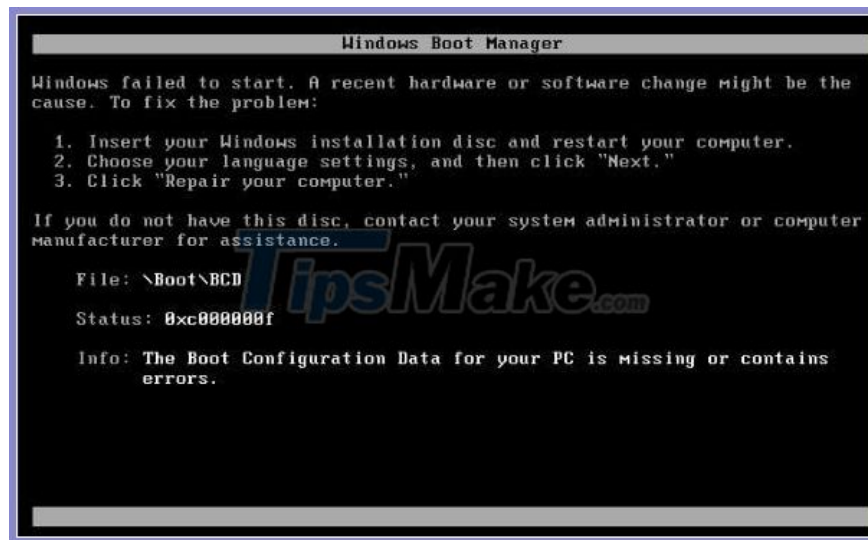
The BCD boot error is actually a common error on Windows Server 2012 and also occurs in Windows Server 2008 (R2). In today's article, let TipsMake.com learn how to fix BCD boot error on Windows Server 2012.

The BCD boot error is actually a common error on Windows Server 2012 and also occurs in Windows Server 2008 (R2). Except for Server operating system, you may also see BCD boot error on Dell, HP, Lenovo laptop or Gateway boot BCD error.

Why are you getting a BCD error in Windows Server 2012?

In general, you can get this error the first reboot activated by expanding system partition. Incorrect operation can damage the BootBCD file.

Additionally, the error occurs after adding some applications or programs. Boot Configuration Data is set up for third-party integration, so anyone can deploy tools like diagnostics or recovery options. As a result, the BCD store could be damaged by third-party malware.



BCD boot error is really a common error on Windows Server 2012

Also, you may get BCD boot error when booting from USB containing MBR or damaged BCD store. Besides, Server installation error will also cause the problem.

In Windows Server 2012, these errors can also occur during PXE boot or in SCCM: *'Recovery. Your PC needs to be repaired', 'The Windows Boot Configuration Data file does not contain a valid OS entry', 'An error occurred while attempting to read the boot configuration data'* and *'After multiple tries, the operating system on your PC*

failed to start, so it needs to be repaired '.

What should you do to fix startup BCD error in Windows Server 2012 as well as Server 2008? Let's move on to the next section.

How to fix BCD boot error in Windows Server 2012

Depending on the condition, you need different solutions. If you have a Windows installation or repair disc available, please refer to the steps in the first section. If not, move on to the next section.

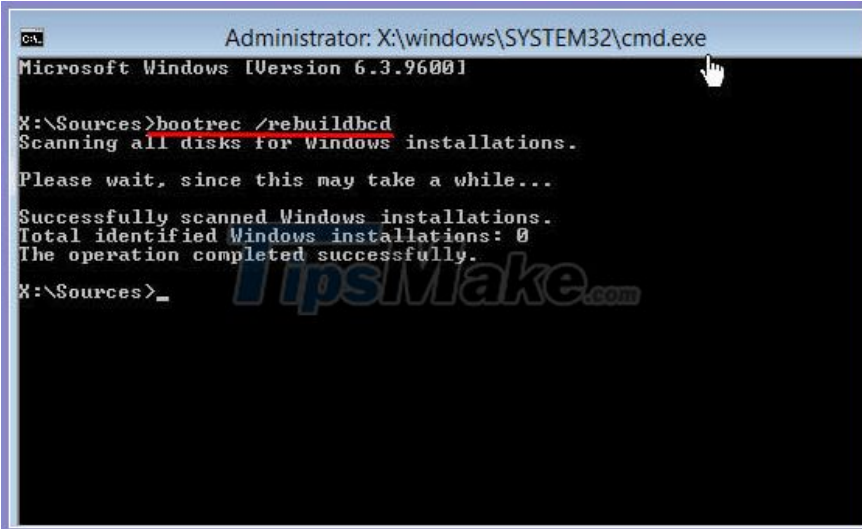
Fix BCD error with Windows installation disc

Insert the Windows installation disc and start it up. Follow these steps to rebuild the BCD for the server.

Step 1. At the setup interface, select the language, time and keyboard input, then click **Next**.

Step 2. Click on **Repair your computer** in the lower left corner.

Step 3. Go to **Troubleshoot > Command Prompt** to launch CMD. Then, type **bootrec / rebuildbcd** and press **Enter**. Wait for the process to complete.



```
Administrator: X:\windows\SYSTEM32\cmd.exe
Microsoft Windows [Version 6.3.9600]
X:\Sources>bootrec /rebuildbcd
Scanning all disks for Windows installations.
Please wait, since this may take a while...
Successfully scanned Windows installations.
Total identified Windows installations: 0
The operation completed successfully.
X:\Sources>
```

Step 4. Close **Command Prompt** and return to the **Choose an option** interface . Click **Continue**. You will be prompted to press any key to get started. Press any key to restart the Server. The BCD file will be rebuilt and the Server can start up properly.

Advice:

If that doesn't work, enter the following commands first and then rebuild the BCD file.

```
bootrec /fixmbr bootrec fixboot bootrec /scanos
```

Fixing the BCD error is quite easy with the help of the Windows installation disc. However, if you don't have an installation disc, but you have made a system backup or a drive backup for Windows Server 2012 on a regular basis, you can revert the Server back to the state when everything worked. In that case, you just need to create a bootable medium to start Server 2012.

Fix the BCD error by fixing the damaged MBR

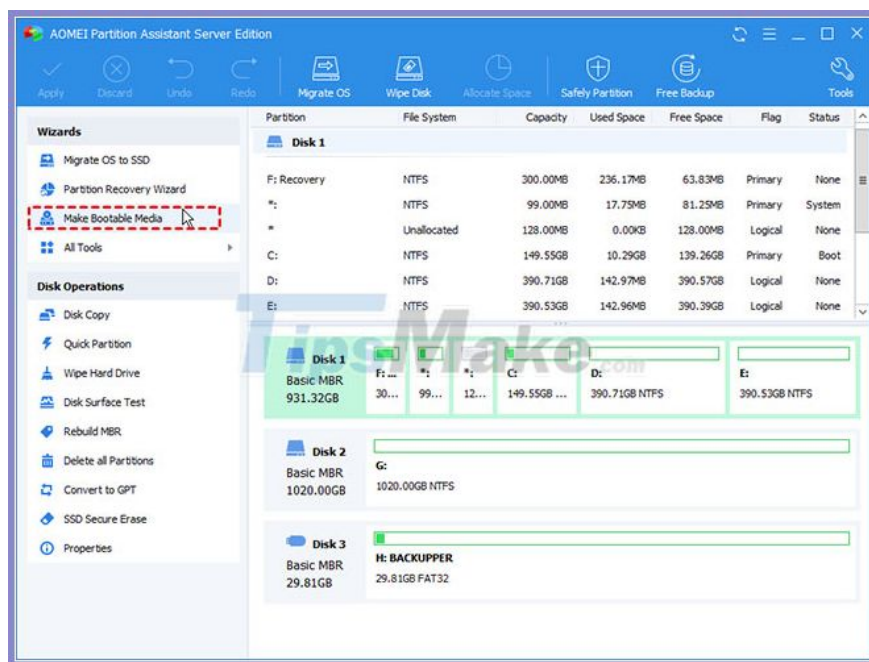
If the BCD error is caused by a corrupt or problematic MBR, you need to fix the MBR for Windows Server 2012. AOMEI Partition Assistant Server is a comprehensive disk partition manager that will assist you to rebuild MBR for Server 2012, 2019, 2016, 2012 as well as Server 2008. It provides both the CUI and the GUI for the computer beginner and IT professionals alike. AOMEI Partition Assistant Server supports all versions of Windows Server. Let's learn how to fix errors with this software.

Prepare:

- A fully functional PC: Since Server 2012 cannot be booted, you need to prepare a fully functional Windows PC to install AOMEI Partition Assistant Server.

USB or CD / DVD: After installing AOMEI Partition Assistant on that PC, you need to create a bootable medium to start Server 2012.

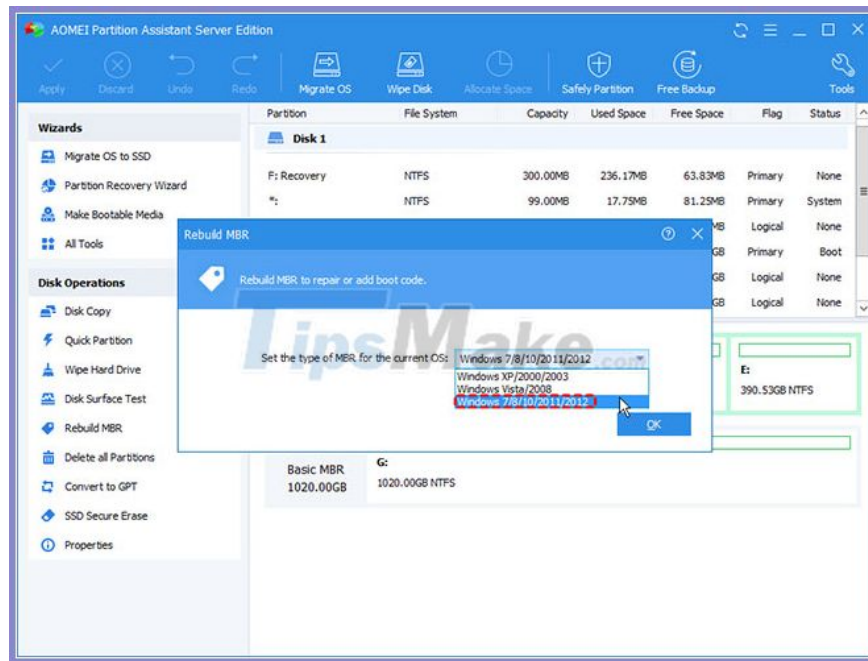
Step 1. USB connection to a 'healthy' PC. Install and launch AOMEI Partition Assistant Server on that PC. At the main interface, click **Make Bootable Media** on the left and follow the steps to complete the creation. Option to burn to CD / DVD and export ISO file is also available. You can also add certain drivers to Server 2012 before creating it.



Step 2. Insert the bootable media into Server 2012 and start the machine. If it goes back to the local drive, you'll need to change the boot priority to the bootable media in the BIOS.

Step 3. After you log in, AOMEI Partition Assistant Server will start automatically. Right-click on the drive you want to repair (usually the system drive in this case) and choose **Rebuild MBR** .

Step 4. In the pop-up window, select the MBR type for Windows Server 2012, ie **Windows 7/8/10/2011/2012** option and click **OK**.



Step 5. Click **Apply**> **Proceed** to execute pending operations. Then, restart the Server system to repair it.

Advice:

- After successfully booting Windows Server 2012, you can run CHKDSK to see if there are any other errors.

To fix the BCD boot error in Windows Server 2008, you need to select the Windows Vista / 2008 option in step 4.

You finished reading the article "**How to fix BCD boot error on Windows Server 2012**" edited by the [TipsMake](#) team. We hope this article has provided you with many useful tech tips and tricks. You can search for similar articles on tips and guides. Thank you for reading and for following us regularly.