

How to fix Attempted Execute on Noexecute Memory on Windows

Error Attempted Execute on Noexecute Memory (stop code 0x000000fc) occurs because the driver is corrupted, old or driver conflicts. This error usually occurs after installing new hardware on the computer.

Error Attempted Execute on Noexecute Memory (stop code 0x000000fc) occurs because the driver is corrupted, old or driver conflicts. This error usually occurs after installing new hardware on the computer. This article will show you how to fix Attempted Execute on Noexecute Memory on Windows.

How to fix Attempted Execute on Noexecute Memory on Windows

1. The cause of the error
 1. File system Windows is broken
 2. Old driver or incorrect configuration
 3. Memory module failed
2. Ways to fix Attempted Execute on Noexecute Memory
 1. Restore the system
 2. Disable or update the driver
 3. Scan the virus
 4. Install a pending Windows update
 5. Run the sfc command
 6. Check RAM
 7. Reinstall Windows

The cause of the error

```
A problem has been detected and Windows has been shut down to prevent damage
to your computer.

An attempt was made to execute non-executable memory.

If this is the first time you've seen this Stop error screen,
restart your computer. If this screen appears again, follow
these steps:

Check to make sure any new hardware or software is properly installed.
If this is a new installation, ask your hardware or software manufacturer
for any Windows updates you might need.

If problems continue, disable or remove any newly installed hardware
or software. Disable BIOS memory options such as caching or shadowing.
If you need to use Safe Mode to remove or disable components, restart
your computer, press F8 to select Advanced Startup Options, and then
select Safe Mode.

Technical Information:

*** STOP: 0x000000fc (0x00000001, 0x00000001, 0x00000000, 0x00000000)
```

1. File system Windows is broken

This error usually occurs because the corrupted Windows system file has been changed due to a disk failure, power failure or virus attack.

2. Old driver or incorrect configuration

Another possible cause of this error is that the device driver is not updated or improperly configured. This usually happens after Windows updates or system upgrades / downgrades.

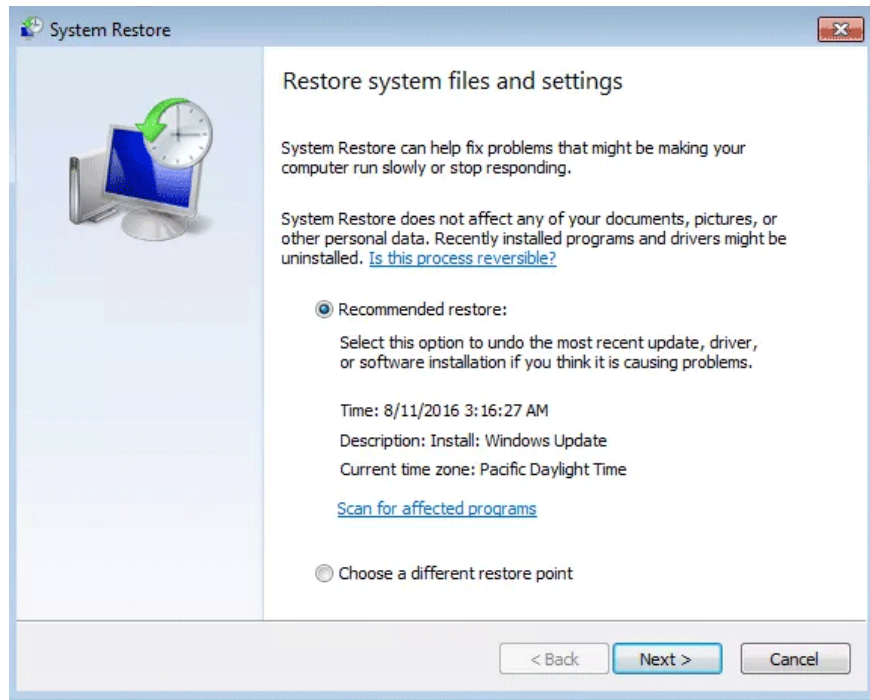
3. Memory module failed

The last cause that could cause a Attempted Execute on error Noexecute Memory is because the memory module is corrupted resulting in a read / write error when the system tries to access it.

Ways to fix Attempted Execute on Noexecute Memory

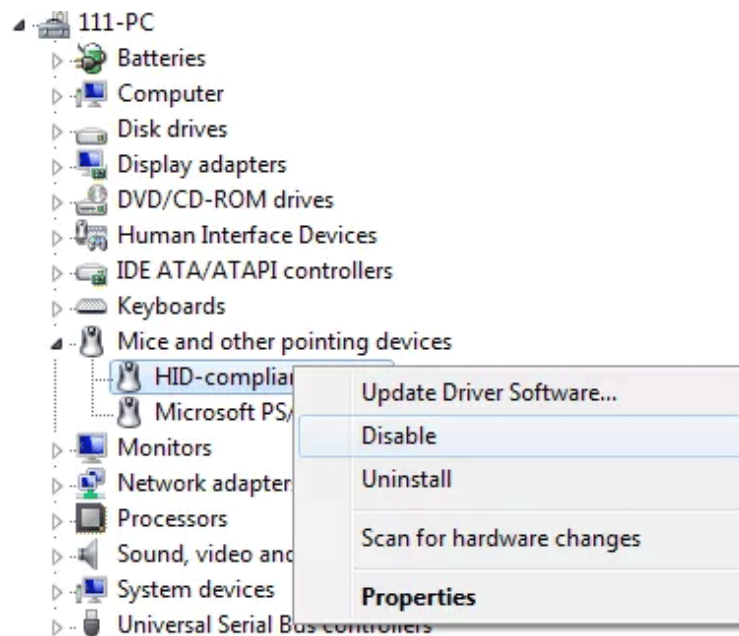
The following remedies apply to Windows Vista, Windows 7, Windows 8, Windows 8.1 and Windows 10.

1. Restore the system



If the 0x000000fc error occurs immediately after installing a new hardware component, use System Restore to restore the computer to the time before the error occurred. Refer to the article [How to use System Restore on Windows](#).

2. Disable or update the driver



In the case of this error recently installed by a driver, uninstall or update the driver to the latest version. Refer to the article [5 basic ways to update and update drivers for computers](#).

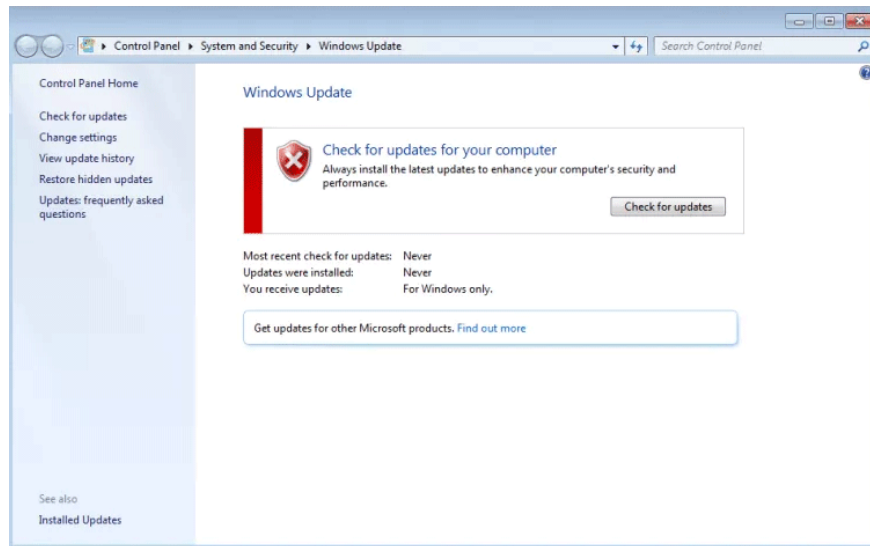
3. Scan the virus

Virus infected computers can cause 0x000000fc errors, use your favorite antivirus software to scan your computer for viruses or malware.

After finishing scanning your computer and detecting infected files, process it and restart the computer.

4. Install a pending Windows update

You need to make sure your computer is updated to the latest Windows version.



Step 1 . Click on **Start** .

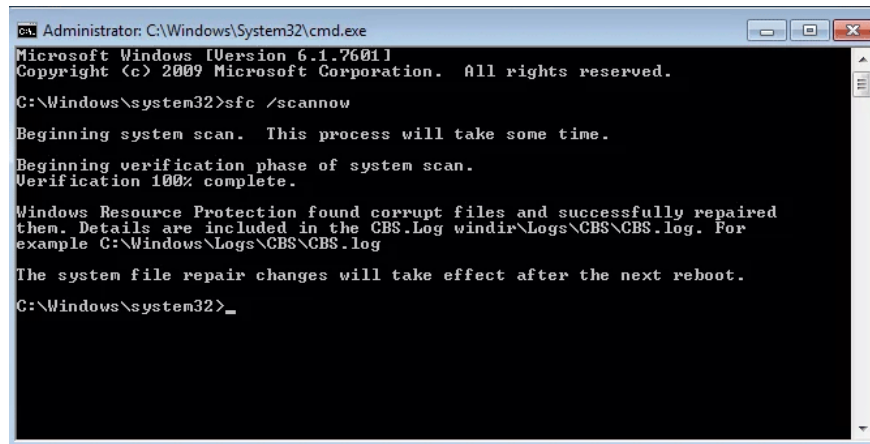
Step 2 . Type **update** in the search box.

Step 3 . Select **Check for Update** in the search results.

Step 4 . If an update is available, click **Install Updates** .

Step 5 . Restart the computer.

5. Run the sfc command



```
Administrator: C:\Windows\System32\cmd.exe
Microsoft Windows [Version 6.1.7601]
Copyright (c) 2009 Microsoft Corporation. All rights reserved.

C:\Windows\system32>sfc /scannow

Beginning system scan. This process will take some time.
Beginning verification phase of system scan.
Verification 100% complete.

Windows Resource Protection found corrupt files and successfully repaired
them. Details are included in the CBS.Log windir\Logs\CBS\CBS.log. For
example C:\Windows\Logs\CBS\CBS.log

The system file repair changes will take effect after the next reboot.
C:\Windows\system32>_
```

The sfc command will check the file system and fix the corrupted files. Refer to the article [Using the SFC command to fix Windows 10 file system errors](#).

6. Check RAM

If the Attempted Execute on Noexecute Memory error is due to the RAM memory failure, perform a RAM test according to the instructions in the article [2 ways to check RAM and check the RAM error on the computer with the highest accuracy rate](#).

7. Reinstall Windows

Note: Reinstalling Windows will delete all files, please use the file backup tool before proceeding.

Step 1 . Plug in the bootable USB or DVD.

Step 2 . Restart the computer.

Step 3 . Press any key to boot from the installation USB when notified.

Step 4 . In the **Install Windows** window, select the language, time, keyboard input method.

Step 5 . Click **Next** .

Step 6 . Click **Install Now** .

I wish you all success!

You finished reading the article "**How to fix Attempted Execute on Noexecute Memory on Windows**" edited by the [TipsMake](#) team. We hope this article has provided you with many useful tech tips and tricks. You can search for similar articles on tips and guides. Thank you for reading and for following us regularly.