

How to fix an open CD / DVD drive error automatically

Surely you don't want the CD / DVD drive to open automatically every time you start your computer, right? So how to fix the open CD / DVD drive error automatically?

When logged into Windows 10 and asked how the system will handle the CD / DVD drive at startup, many users have selected **Open**. But that was a mistake. Since then, every time you log in to the system, the CD / DVD drive will automatically open and windows will appear, requiring users to insert / load a DVD.

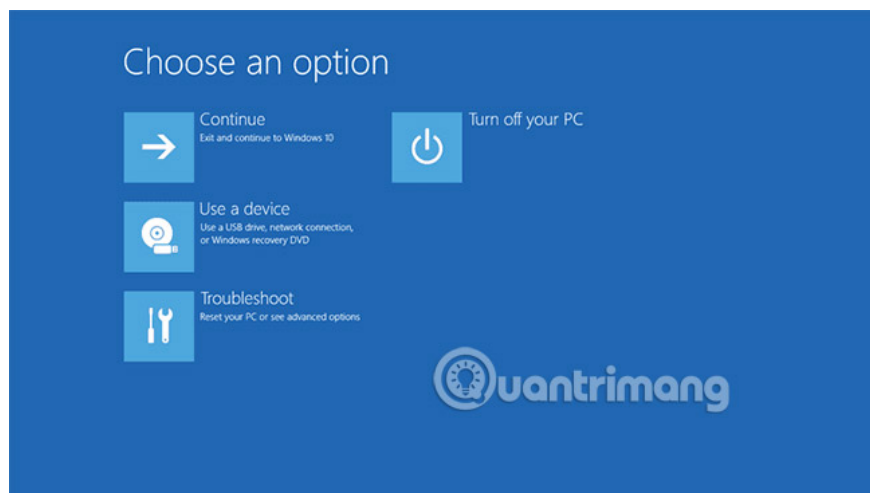
Surely you don't want the CD / DVD drive to open automatically every time you start your computer, right? So how to fix the open CD / DVD drive error automatically? Let's find out through the article below.

Please follow the methods below to resolve this issue.

Method 1: Check the boot order

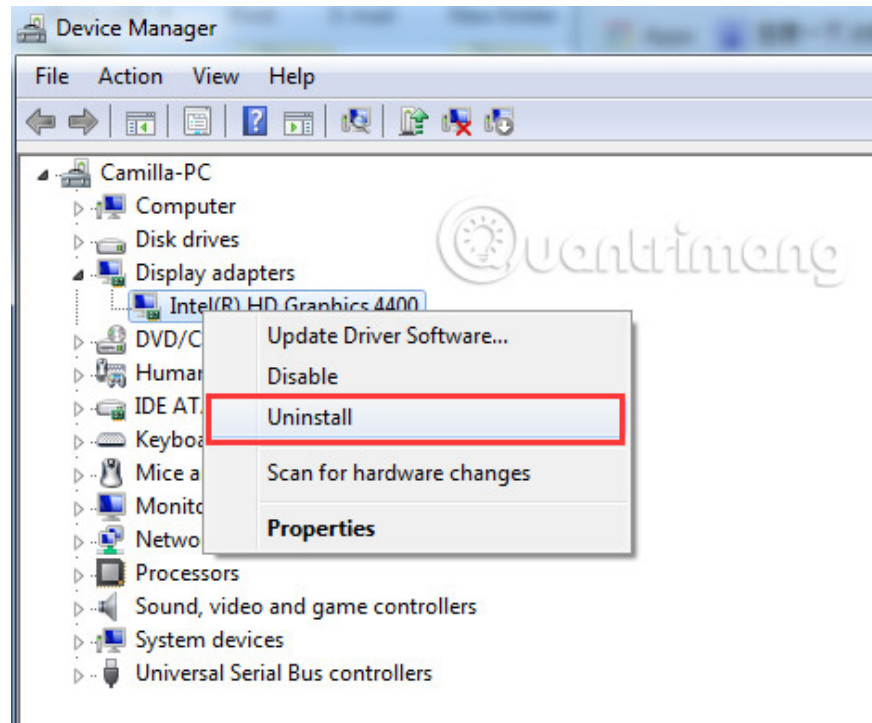
This error may simply be a minor shortcoming after you install Win, which is to select the boot priority from the CD / DVD drive, but once installed it will not change the boot order of the default boot type. . Follow the instructions in the article how to set up the BIOS to boot from CD drive to step 1, select Hard Drive to finish. If the boot order has no problem, please see the methods below to fix it.

Method 2: Run troubleshooter for hardware and devices



1. Click the **Start** button and enter '**Troubleshooting**' in the search bar.
2. Click the result, then click '**Hardware and sound**'.
3. In the **Hardware and sound** section, click '**Hardware and devices**'.
4. A window will appear, click the '**Next**' button and your hardware troubleshooter will start working.

Method 3: Uninstall and download the driver



Please follow the steps below to uninstall DVD driver.

1. Click the **Start** button and enter '**Device Manager**' on the search bar.
2. Open **Device Manager**, expand the "**DVD and CD driver**" section.
3. Find and double-click the **DVD and CD driver** from the left panel to uninstall.
4. Right-click on the device and click **Uninstall**.
5. Windows will prompt you to confirm the device deletion. Click **OK** to remove the driver.
6. After the uninstallation process is complete, restart your computer.

After you have successfully uninstalled the driver, please visit the computer manufacturer's website, download the Windows 10 DVD and CD driver for your computer and check again.

Hope this information will help you. If you have any further questions, please leave a comment in the comment section below. Good luck!

See more:

1. Fix Windows 7 error without receiving CD / DVD drive
2. Some ways to fix lost DVD drive errors on Windows 10
3. Handling errors that occur when trying to install Office 2007 from a CD or DVD

You finished reading the article "**How to fix an open CD / DVD drive error automatically**" edited by the [TipsMake](#) team. We hope this article has provided you with many useful tech tips and tricks. You can search for similar articles on tips and guides. Thank you for reading and for following us regularly.
