

# How to fix an empty Network Connections interface

Network Connections is a network management interface on a Windows computer, allowing you to change networks or fix network connection errors.

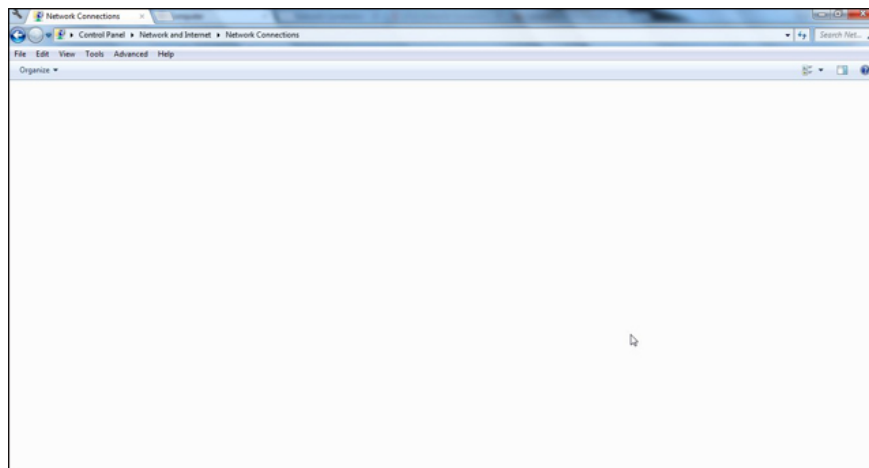
To change the network connection on a Windows computer, or edit a network connection error, we will open the Network Connections interface. This is the interface to manage all network connections on computers, including WiFi, wired network. So how will it be handled when the Network Connections interface is completely empty, does not appear any network management icons or items?

This phenomenon does not affect the Internet connection on the computer, you can still access the normal network. But things like disabling or enabling network connectivity, changing your computer's IP address, and changing DNS on the computer will not work. So what is the way to fix the above error?

1. Instructions for fixing Wifi errors with yellow exclamation
2. Instructions to fix yellow exclamation computer network with only 3 steps
3. How to find the IP address of another computer on the LAN

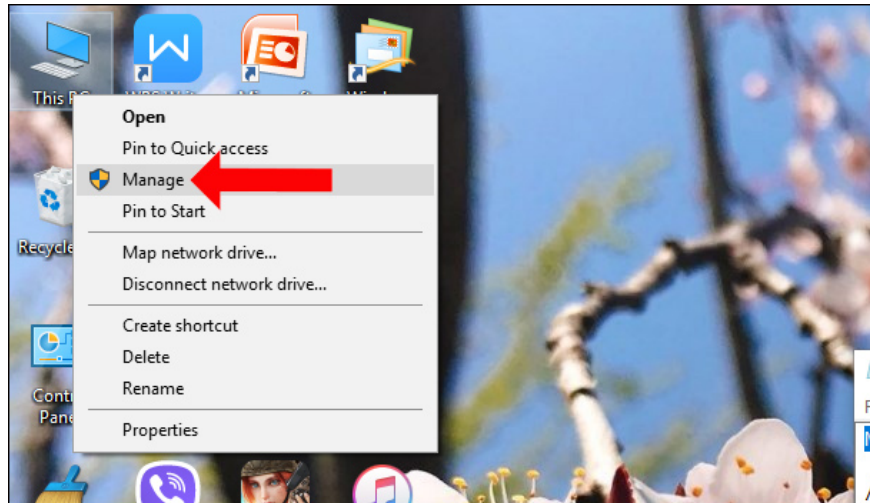
## How to fix the white Network Connections interface

Empty, blank Network Connections interface error will be as shown below



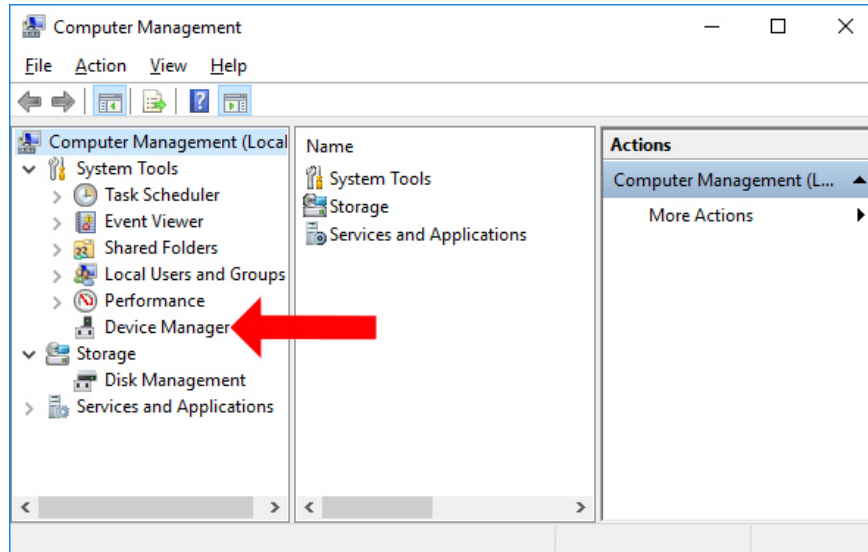
### Step 1:

At **This PC** or My Computer icon on your computer, right-click and choose **Manage** .

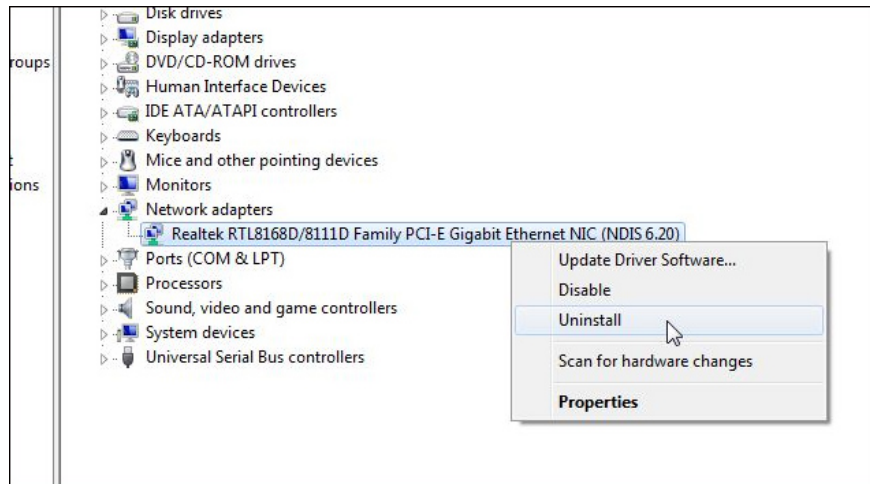


## Step 2:

Switch to the new interface and click on the **Device Manage** item in the list on the left of the interface.

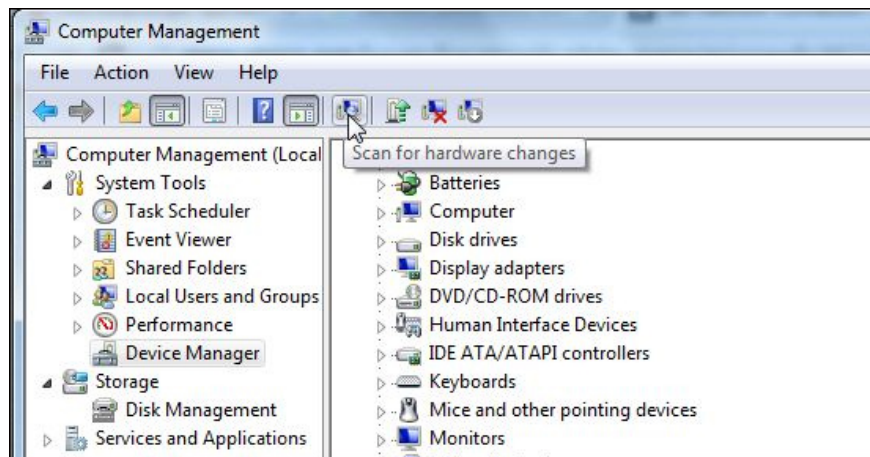


Look at the content on the right to find **Network adapters** , then select the **network card driver** you are using, right-click and choose **Uninstall** to delete temporarily.



### Step 3:

Next, select the **Scan for hardware changers icon** on the toolbar to detect the changes of the Device. Then the network card driver will automatically reinstall and the Network Connections interface will be displayed again.



With just a few simple steps we have overcome the network management interface error Network Connections completely blank, white. The network connection management, network settings on the computer will be displayed again for editing when needed.

See more:

1. How to fix Network Protocols errors are Missing on Windows?
2. Fix Wifi error disconnected on Windows 10, 8, 7 and Vista
3. How to turn on and turn off Wifi on laptop very fast

I wish you all success!

You finished reading the article "**How to fix an empty Network Connections interface**" edited by the [TipsMake](#) team. We hope this article has provided you with many useful tech tips and tricks. You can search for similar articles on tips and guides. Thank you for reading and for following us regularly.