

# How to fix Bluetooth connection loss after upgrading to Windows 10

Recently, TipsMake has received quite a few questions from users about how to fix the Bluetooth connection loss issue after upgrading to Windows 10. Therefore, in this article, TipsMake will guide you through some ways to fix this problem.

Suppose you've just installed a new Windows 10 update, whether it's a monthly update or a feature update, and you're experiencing a Bluetooth connection loss issue. Refer to the article below from TipsMake to learn how to fix the Bluetooth connection loss after upgrading to Windows 10.

## *Fixing Bluetooth connection issues after upgrading to Windows 10*

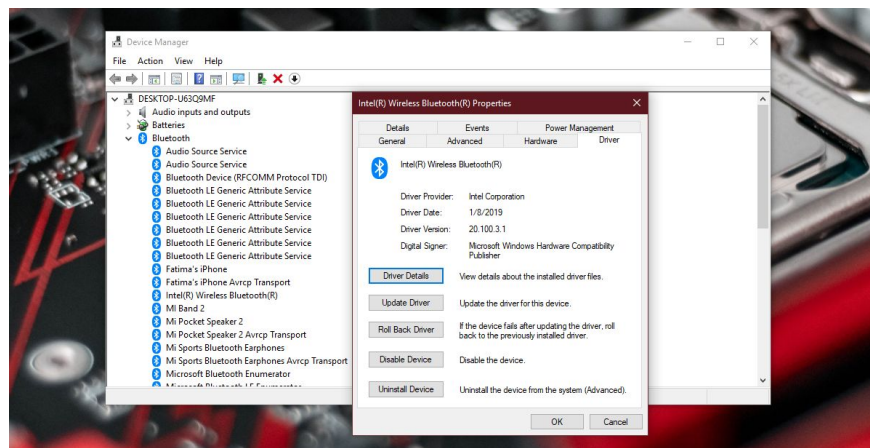
To fix the Bluetooth connection issue after upgrading to Windows 10, first check if you have recently installed any new Windows updates.

**Open the Settings app**, then go to **Update & Security**, select **Windows Update**, and check your update history. If you have recently installed an update, try some of the methods below to fix the problem.

### *Method 1: Restore an older driver version.*

Open Device Manager and find Bluetooth devices. Expand this section, find and select your Bluetooth chip. Right-click on it and select **Properties**. In the Properties window, go to **the Driver tab**. Here, find and click the **Roll back driver** button to restore an older Bluetooth driver version.

Finally, restart your computer to apply the changes and check if Bluetooth is now visible and working on your computer.

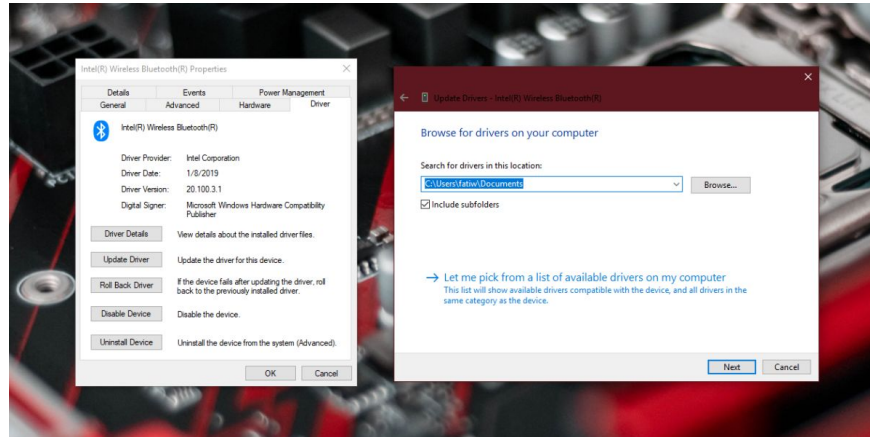


### ***Method 2: Manually install the Bluetooth driver.***

If the "Roll back driver" option is unavailable, we will have to manually install an older version of the Bluetooth driver.

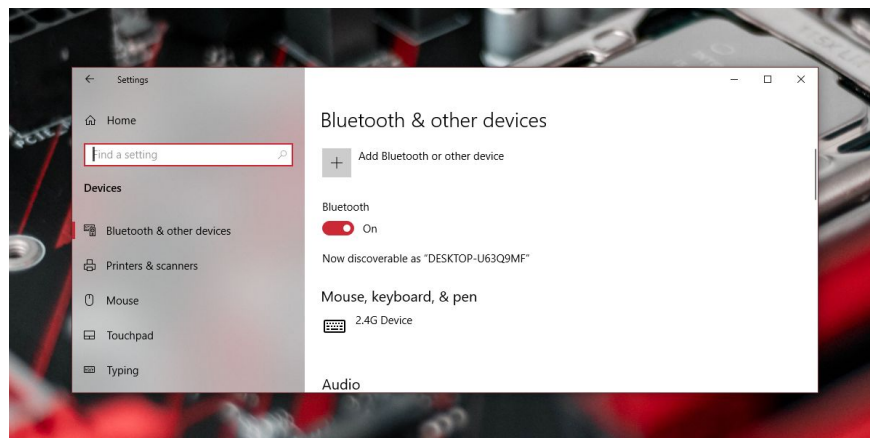
Visit the Bluetooth manufacturer's website to download an older driver version. To search for the manufacturer's name, you can access Device Manager, or alternatively, you can visit the laptop or computer manufacturer's website to find and download older driver versions.

The next step is to uninstall the latest driver version installed on your computer via the Device Manager window and install the older driver version you just downloaded. Finally, check if the error persists.



### ***Method 3: Turn on Bluetooth***

The next step is to turn on Bluetooth on your Windows 10 computer. To do this, open the Action Center and toggle the Bluetooth switch, or access the Bluetooth tab in the Settings app.



### ***Method 4: Update BIOS***

On some systems, Bluetooth may be disabled in the BIOS. If you've recently updated your BIOS firmware, it's possible the update has disabled Bluetooth. Check your BIOS and see if Bluetooth is disabled. If so, simply re-enable it.

If you are unable to enable Bluetooth, the solution is to downgrade to older BIOS versions.

The article above from TipsMake has just guided you on how to fix the Bluetooth connection issue after upgrading to Windows 10. If you have any questions or need clarification, please leave your comments in the comment section below the article. If you are not experiencing the **Bluetooth not working issue** , please refer to the troubleshooting methods available on Taimienphi.

You finished reading the article "**How to fix Bluetooth connection loss after upgrading to Windows 10**" edited by the [TipsMake](#) team. We hope this article has provided you with many useful tech tips and tricks. You can search for similar articles on tips and guides. Thank you for reading and for following us regularly.

---