

How to fix 5 common problems on Microsoft Edge browser

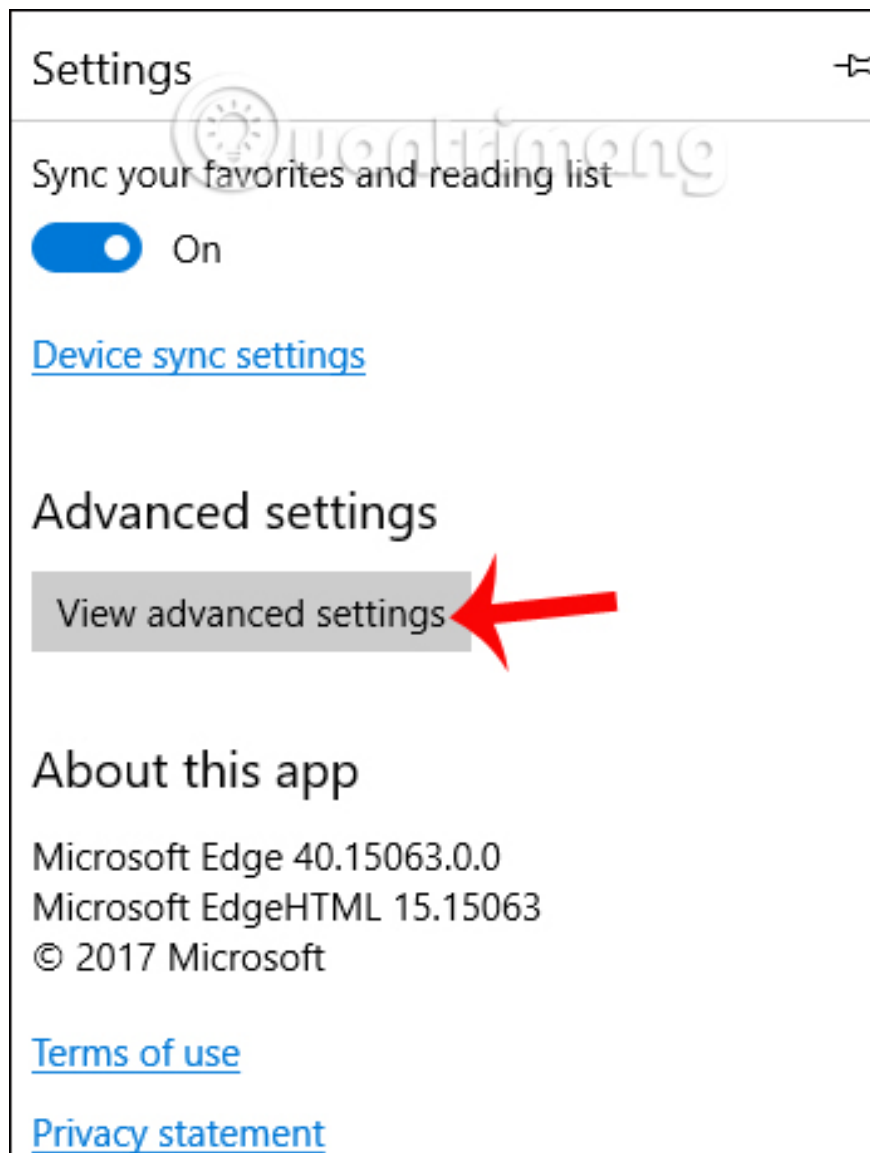
On Microsoft Edge browser in the process of using will often occur some problems, errors affect the user experience process. So what are the ways to handle those problems?

Microsoft Edge is a web browser exclusively for Windows 10, and is increasingly being upgraded and changed over new versions. However, in the process of using it, we will encounter more or less errors in the browser, affecting the work being done as well as the experience on the browser. The following article will help you fix the 5 most frequently encountered problems on Microsoft Edge browser.

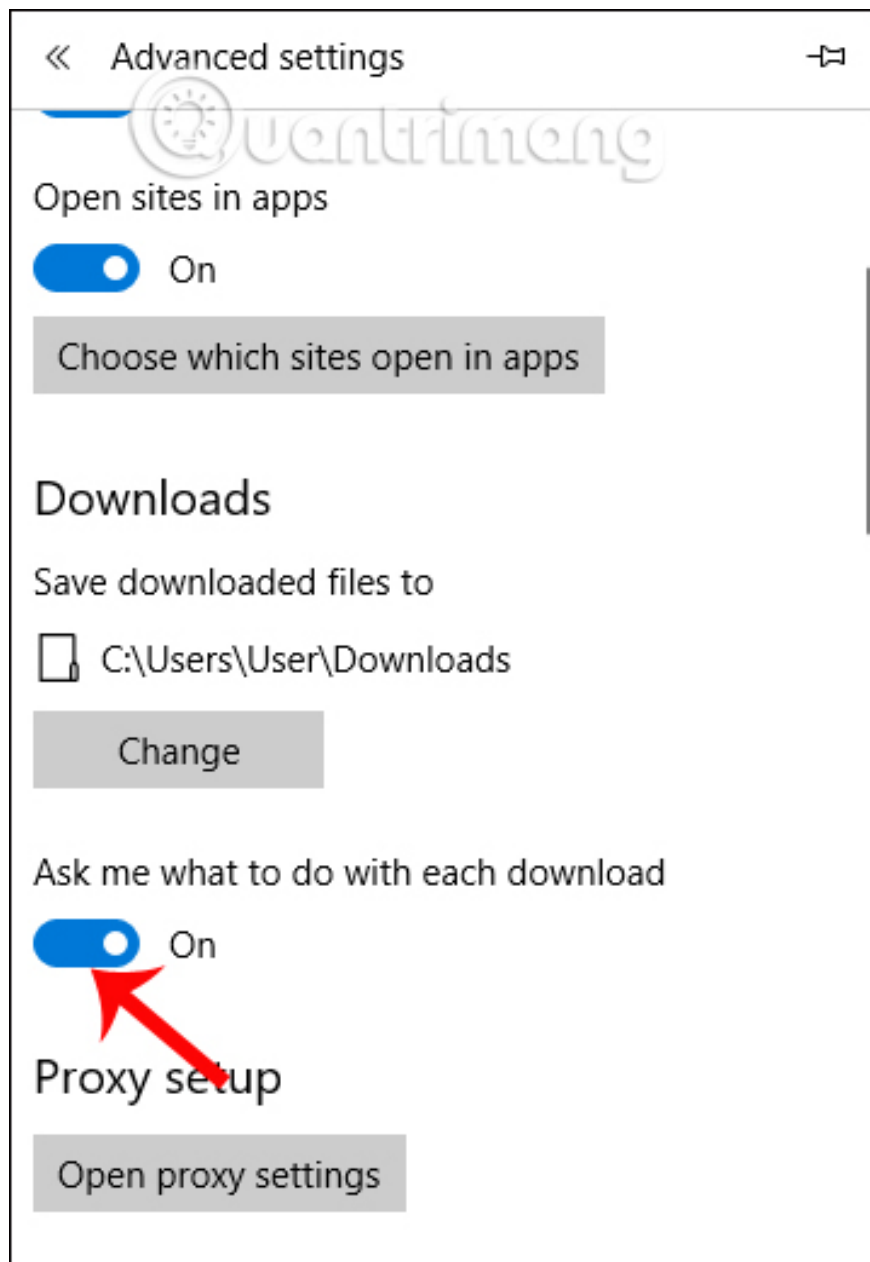
1. How to automatically stop downloading files on Edge:

On Edge browser will leave the default mode to download the file without asking the user first. This will jeopardize the computer because it can be compromised and attacked by malware, when we cannot control the download of the browser.

It is best to turn off the automatic download feature and request to turn on the data download notification. Click the 3 dots icon on the browser interface and select **Settings** , then click the **View advanced settings** to access the **advanced settings** .



Then, in the **Download** section, **turn on the option Ask me what to do with each download** . From now on, the browser will turn on the confirmation message before the file is downloaded.



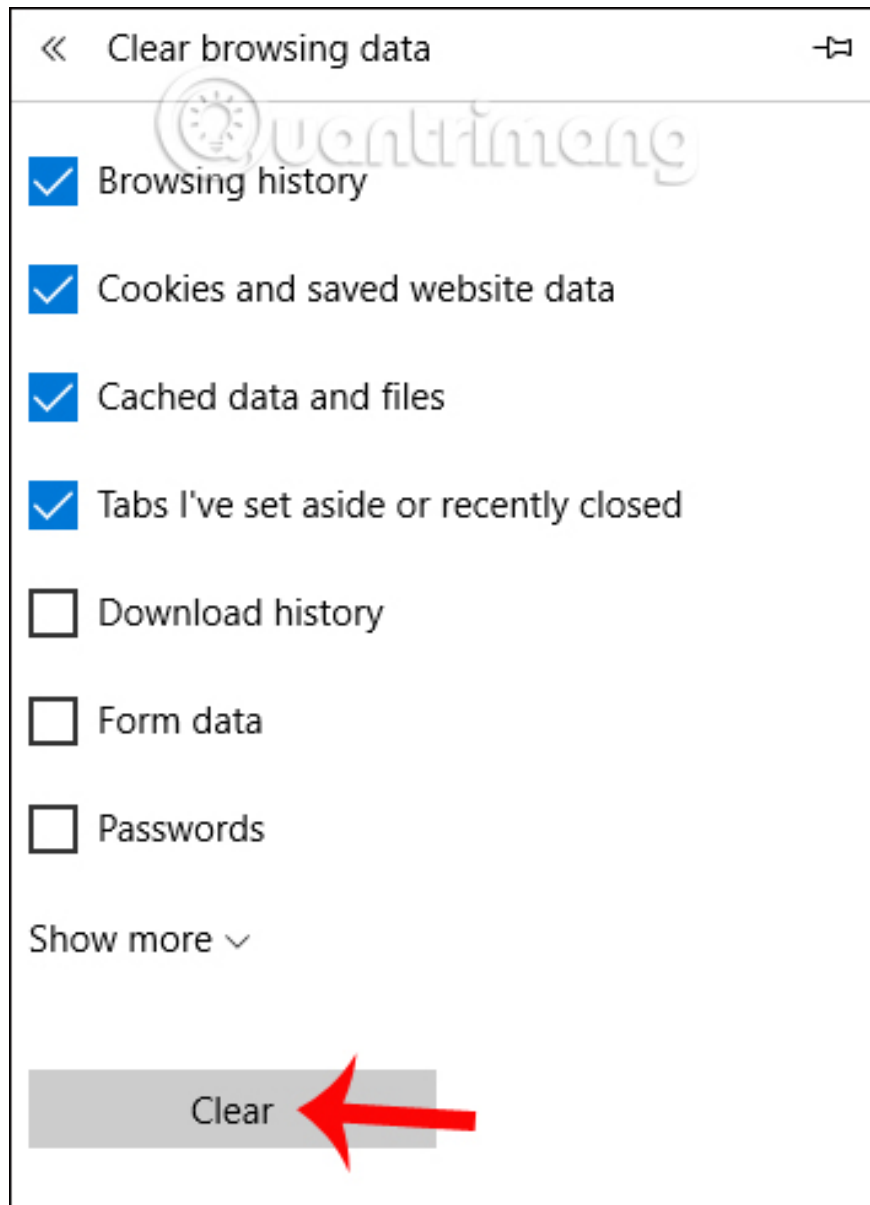
2. Edge browser runs slowly:

There are many causes of slow startup browser status, no web page loading and notifications. Check your internet connection. However, the common cause is in the browser because you have checked your Internet connection again and have no problems.

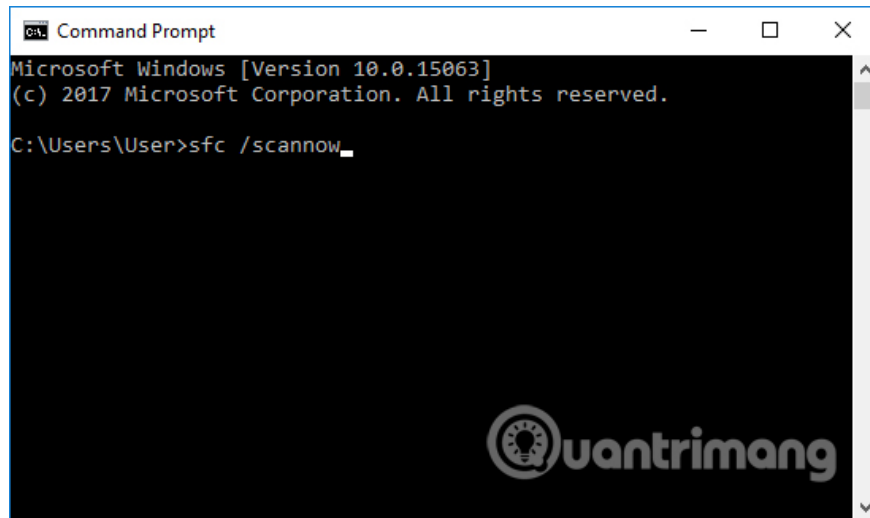
1. View and delete browsing history in Microsoft Edge browser
2. How to automatically clear your browsing history when exiting the Edge browser Windows 10

Clearing the access history and clearing the cache regularly will help the browser have more memory to load the site. We access the **Settings interface** of the browser and select **Choose what to clear**.

A list of options appears, check **Browsing history**, **Cookies and saved website data**, **Cached data and files** and click **Clear**. You can click Show more to open more options to choose to clear your browsing history.



There is also another solution to fix the slow startup status on Edge browser. We open **the Command Prompt interface** by typing cmd in the search bar on Windows. Here, **enter the command sfc / scannow** and press **Enter** .



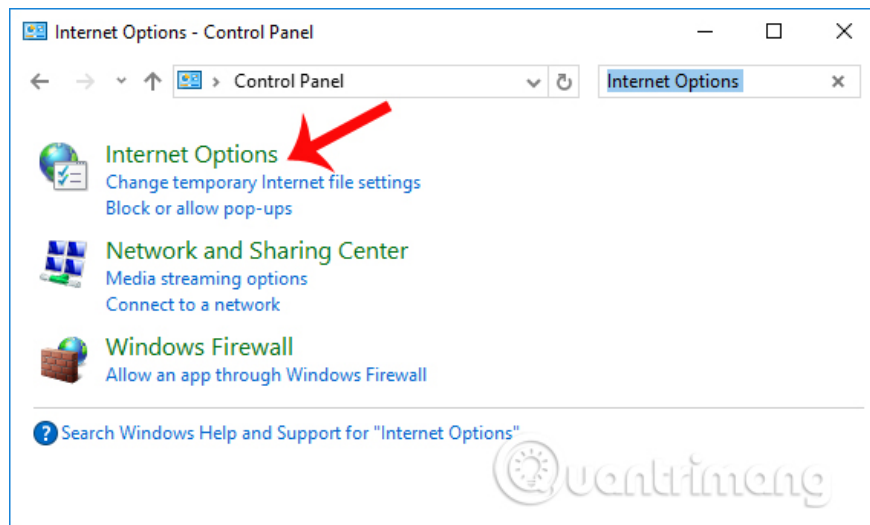
When the command is executed will scan for errors that occur on the hard drive including Microsoft Edge browser. The computer will reboot so that the error correction is complete.

3. Error not viewing video on Edge:

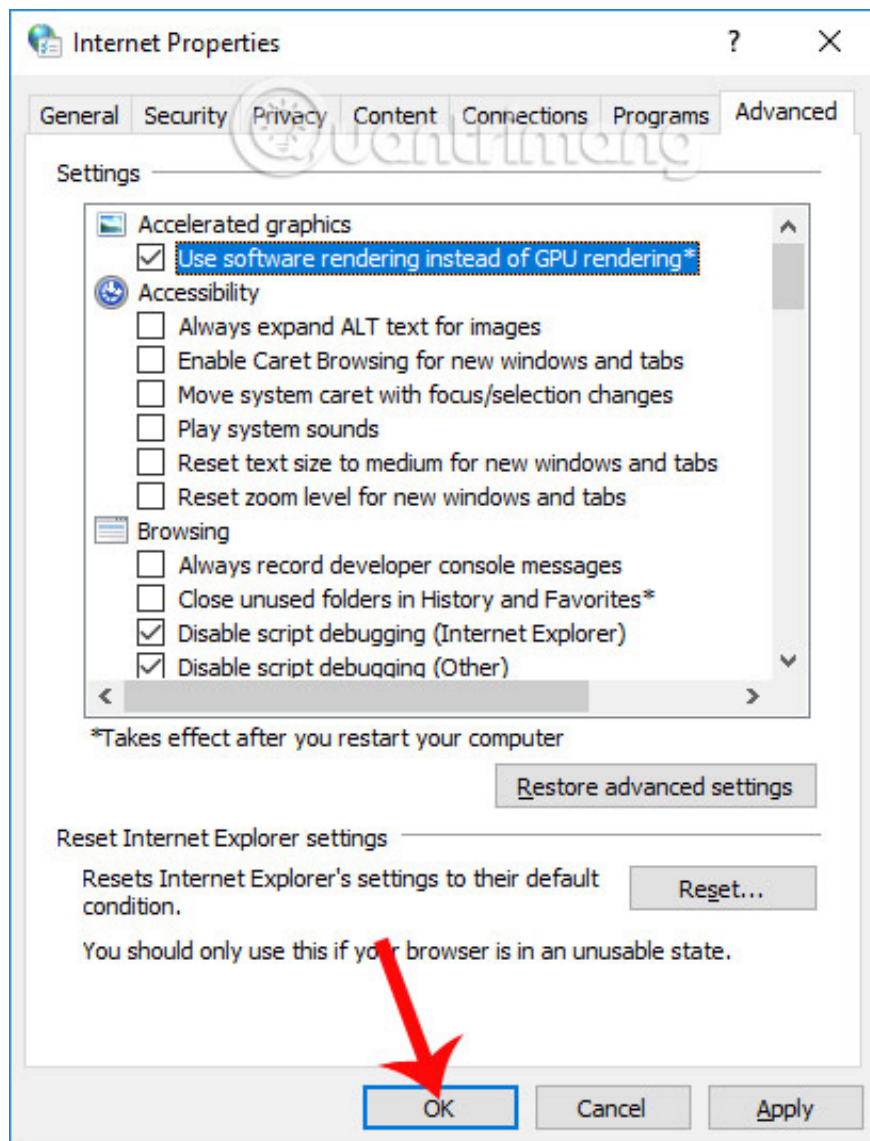
If the user is in a situation where it is impossible to watch videos on Youtube or other websites, it may be due to a problem with Microsoft Edge and graphics card (GPU). We need to update the latest version for the graphics card driver and delete the browsing data.

1. 2 simple ways to update VGA driver for computer monitor, laptop
2. How to update the driver for NVIDIA video card

Or you can open **the Control Panel interface** to enter the **Internet Options** keyword into the search bar and then click on the result.



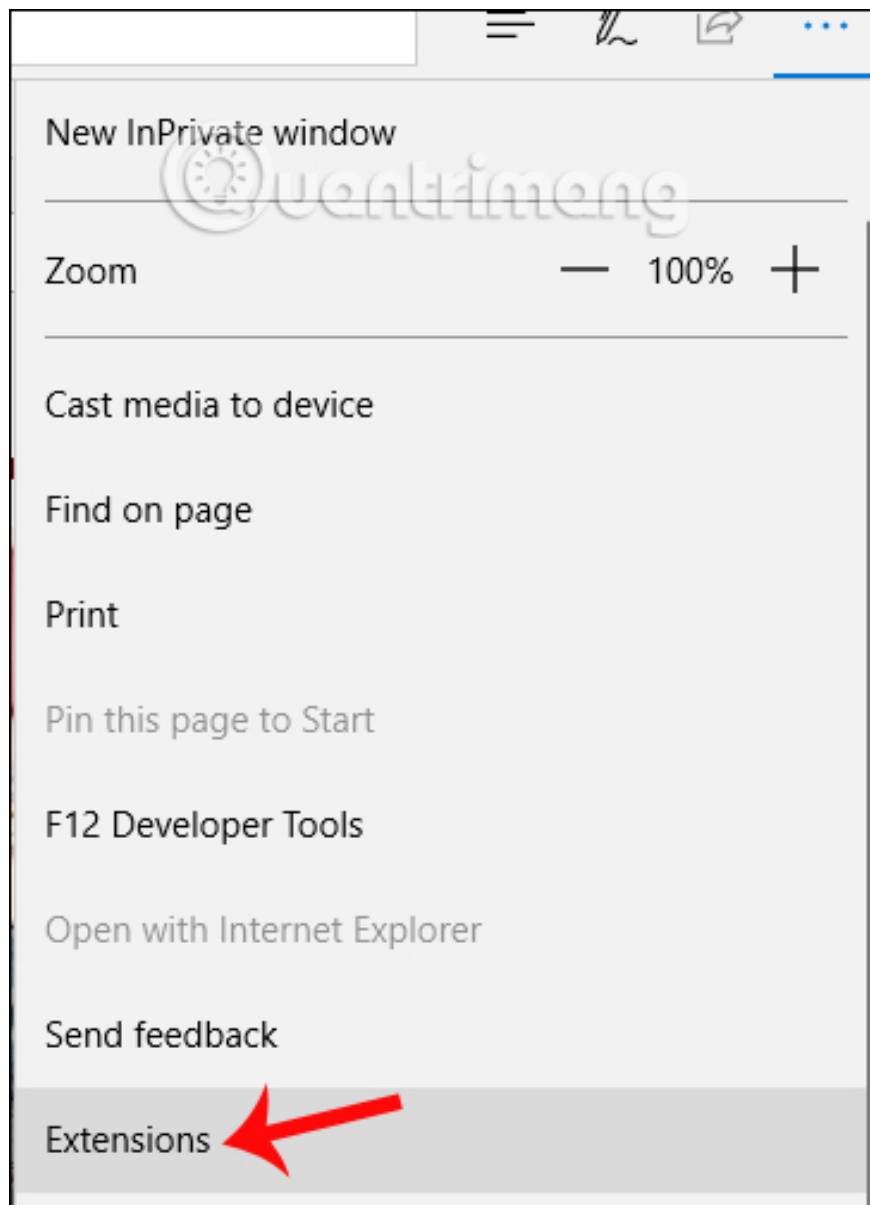
Then click on the **Advanced tab** , select **Use software rendering instead of GPU rendering** and **click OK** . Then restart the computer.



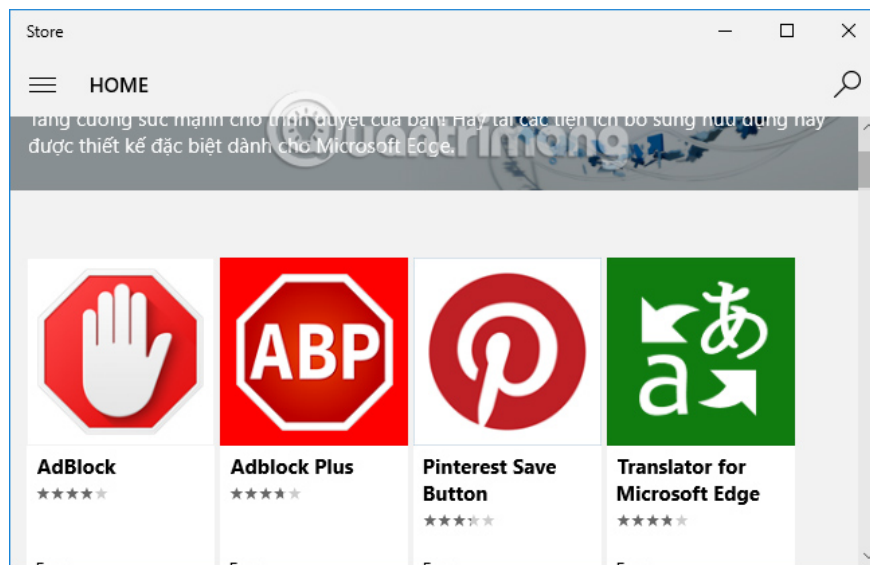
4. Do not block pop-ups:

To block ads on Microsoft Edge browser, we need to install extensions like AdBlock, Adblock Plus, Adguard AdBlock, uBlock Origin. We click on **the 3 dots icon to choose Extensions** , click on **Get extension from the Store** .

1. Disable or uninstall Edge browser extensions on Windows 10



Utilities will be searched on the Windows Store.

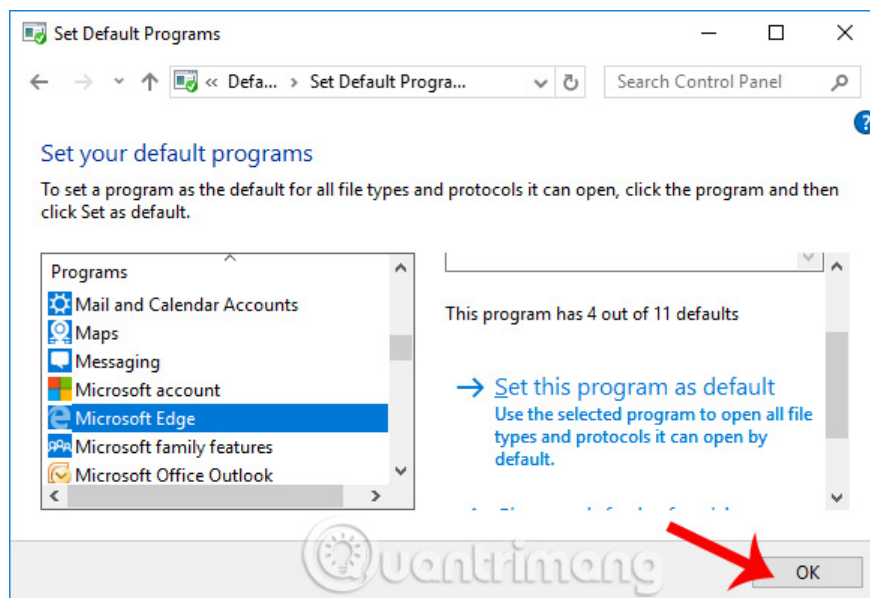


5. Error installing Microsoft Edge as the default browser on Windows:

Setting up Edge browser makes the default browser for Windows extremely simple, but some users reflect that they cannot be set.

When in the **Control Panel**, we continue to access the following **Programs link**> **Default Programs**> **Set your default programs** .

Wait a few minutes for the system to update the application installed on the device. Then click on **Microsoft Edge browser** in the left column and then select **Set this programs as default** Next interface, click **OK** to save.



Thus, Network Administrator has instructed you to read how to fix 5 common problems while using web browser. Hopefully the common error issues will be fixed in the next browser upgrade.

Hope this article is useful to you!

You finished reading the article "**How to fix 5 common problems on Microsoft Edge browser**" edited by the [TipsMake](#) team. We hope this article has provided you with many useful tech tips and tricks. You can search for similar articles on tips and guides. Thank you for reading and for following us regularly.
