

# How to fix '0x00000109: selected entry could not be loaded' on Windows

Error 0x00000109: Could not be selected entry entry is often caused by device driver modifying illegal kernel data.

Error 0x00000109: Could not be selected entry entry is often caused by device driver modifying illegal kernel data. This article will give you some of the causes of errors and how to fix them.

## How to fix error 0x00000109

1. The cause of error 0x00000109
  1. 1. Virus infection
  2. 2. System memory has a problem
  3. 3. The system driver is not updated
  4. 4. File system is broken
2. How to fix 0x00000109 error on Windows
  1. 1. Scan the virus
  2. 2. Run Windows Memory Diagnostic
  3. 3. Install update
  4. 4. Update device drivers
  5. 5. Run chkdsk

## The cause of error 0x00000109

The above error occurs due to one or more of the following causes.

### 1. Virus infection

The common cause of error 0x00000109 is due to virus modifying the system kernel data. To fix this problem you should perform a clean boot and virus scan on the system.

### 2. System memory has a problem

Another common cause is that the RAM module works incorrectly. The module fails due to a power failure or a long time of use, so you should check the system memory periodically to make sure it works correctly.

### **3. The system driver is not updated**

Sometimes after reinstalling the system or updating Windows, the system driver is not updated or installed correctly since then it cannot boot.

### **4. File system is broken**

The last cause of 0x00000109 error is that the file system is corrupted due to a write / read error, power failure or virus attack.

## **How to fix 0x00000109 error on Windows**

**Note :** The following solutions apply to Windows Vista, 7, 8, and 10. Some require using a Microsoft Windows setup DVD or CD. If the computer does not have an installation disc or does not use the Windows setup media, you can use Easy Recovery Essentials for Windows instead. EasyRE will automatically find and fix many problems like error 0x00000109.

### **1. Scan the virus**

If the 0x00000109 error occurs because the virus modifies kernel data, run reliable antivirus software.

**Note :** If you delete an infected system file, Windows may not work correctly.

Open antivirus software and scan the entire system. Without antivirus software, you can use the virus scanner built into Easy Recovery Essentials to run outside Windows from CD / DVD or USB and scan the entire computer.

The Professional version of Easy Recovery Essentials for Windows has a powerful rootkit and virus scanner, which solves this problem and similar errors caused by viruses, rootkits, trojans or spyware. EasyRE is available for Windows XP, Vista, Windows 7, 8 and can be downloaded and created on the computer.

1. These Anti-Rootkit tools should and should be in the system

**Step 1 .** Download Easy Recovery Essentials.

**Step 2 .** Create a CD / DVD or USB boot. Refer to the article How to write an ISO image file to a CD or DVD.

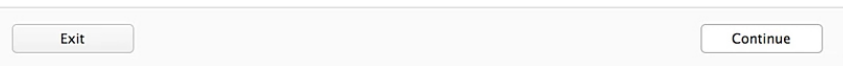
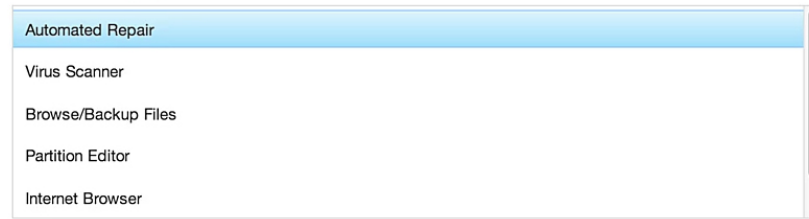
**Step 3 .** Start the computer from CD or USB Easy Recovery Essentials.

**Step 4 .** When running EasyRE, select the **Virus Scanner** option and click **Continue** .

## Easy Recovery Essentials

Welcome to Easy Recovery Essentials for Windows. This recovery and repair CD will attempt to automatically find, diagnose, and fix problems with your PC. In addition to the automated repair tools, you may also perform advanced repairs from the command line, edit partitions, copy important files to an external drive, and access the web.

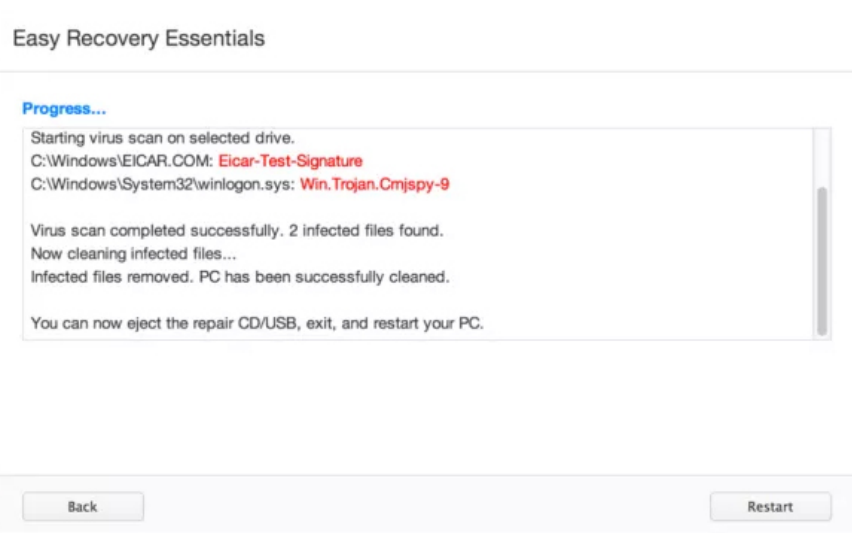
### Select a recovery option:



**Step 5** . After the EasyRE scan drive computer, determine and select the drive letter for Windows from the list, then click the **scan** button to begin.

**Step 6** . EasyRE started scanning drivers for viruses, rootkits, trojans, spyware and other malware. Then EasyRE reports and kills the found virus.

**Step 7** . When completed, EasyRE will report the result, click on **restart** to restart the computer and check for changes.



## 2. Run Windows Memory Diagnostic

Windows Memory Diagnostic tool can check memory to find corrupted data. To run this tool, follow the steps below:

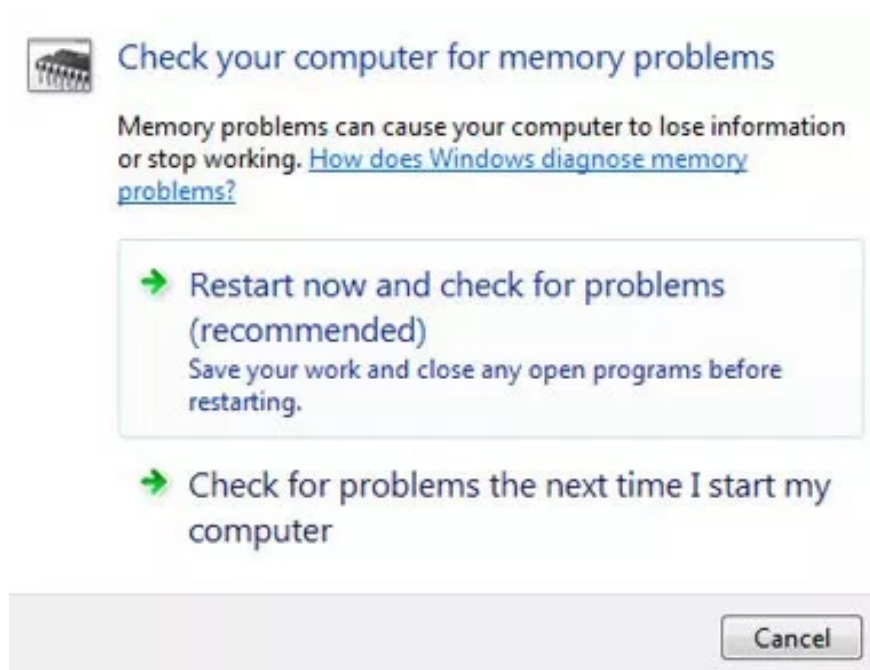
**Step 1** . Launch Windows.

**Step 2** . Click on **Start** .

**Step 3** . Type **windows memory diagnostic** in the search box.

**Step 4** . Click Windows Memory Diagnostic from the list of search results.

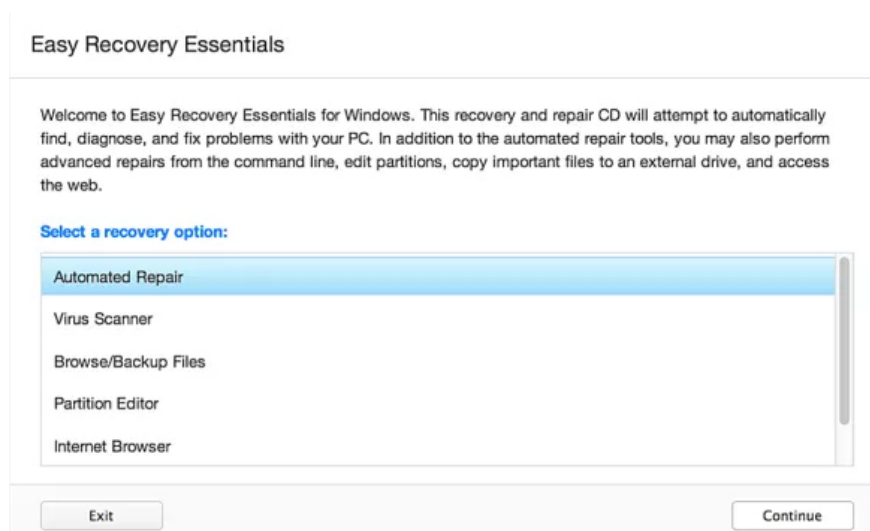
**Step 5** . Follow the instructions on the screen.



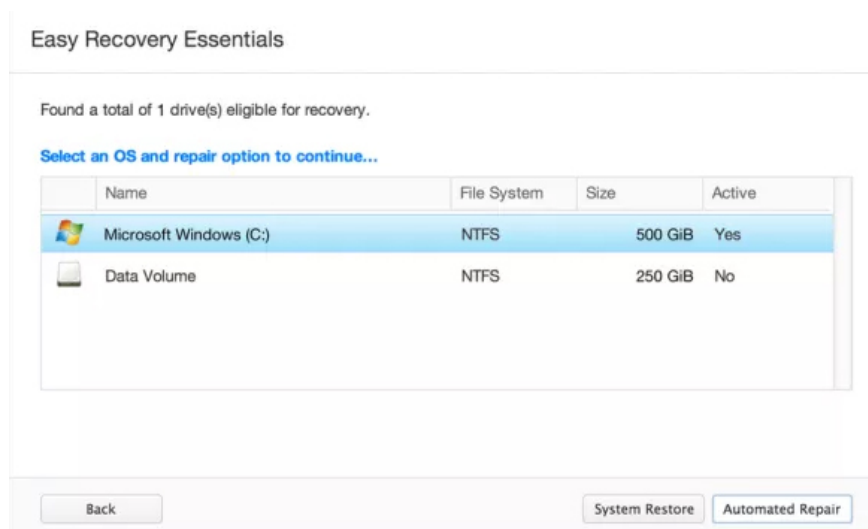
If you cannot boot into Windows and run Windows Memory Diagnostic, you can run Automated Repair of Easy Recovery Essentials, it has a tool to check RAM and HDD.

**Step 1** . Boot into the PC from the USB or boot CD created on.

**Step 2** . Select the **Automated Repair** option and click **Continue** .



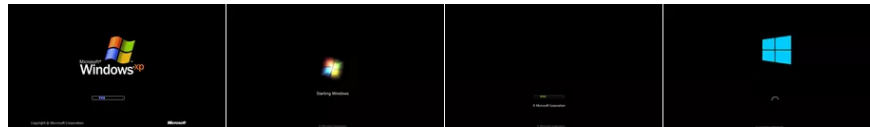
**Step 3** . After EasyRE scans the driver, determine and select the driver character from the list, then click **Automated Repair** .



**Step 4** . Easy Recovery Essentials will begin analyzing selected drives, finding errors and automatically repairing drives, partitions, bootsector, file system, bootloader and registry.

**Step 5** . When the process is complete, EasyRE will report the search results. Click **Restart** button to restart PC and check for changes.

**Step 6** . The computer will boot again.



### 3. Install update

Windows update may fix 0x00000109 error.

**Step 1** . Open **Windows Updates** by typing **update** into the search box.

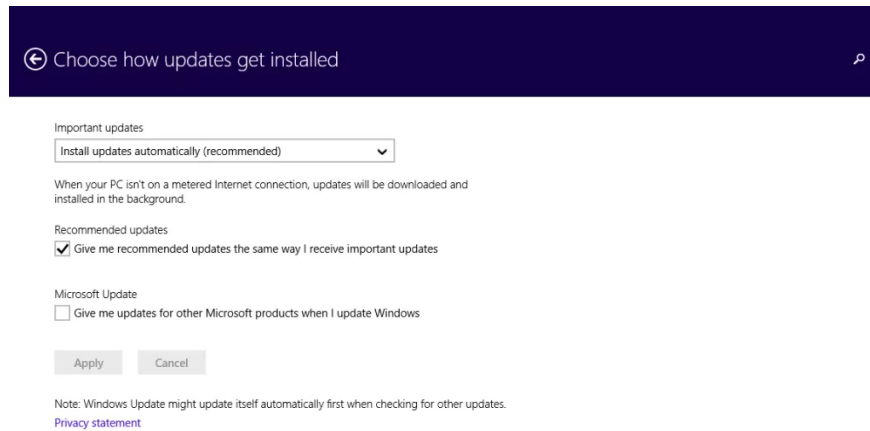
**Step 2** . Click **Update and Recovery** .

**Step 3** . Click **Choose how updates get installed** .

**Step 4** . Select **Install updates automatically** in the **Important updates** section.

**Step 5** . Check the **Give me recommended updates the same way I receive important updates** in **Recommended updates** section.

**Step 6** . Click **OK** .



## 1. How to keep your Windows computer up to date

### 4. Update device drivers

If the above error is caused by a device driver failure, manual driver updates can fix the problem. Refer to the article 5 basic ways to update and update drivers for computers.

### 5. Run chkdsk

If error 0x00000109 is caused by HDD failure, run chkdsk to check and repair the hard drive.

**Step 1** . Boot into Windows from the Windows installation disc.

**Step 2** . Click **Repair your computer** after selecting the language, the time, enter the appropriate keyboard.

**Step 3** . Select the Windows installation driver, usually C: and click on **Next** .

**Step 4** . Select **Command Prompt** when the **System Recovery Options** box appears.

**Step 5** . Enter the following command and press **Enter** .

```
chkdsk C: / f
```

Replace the letter C: with your drive letter.

```
Administrator: X:\windows\system32\cmd.exe
Microsoft Windows [Version 6.1.7601]

X:\Sources>chkdsk e: /f
The type of the file system is NTFS.

CHKDSK is verifying files (stage 1 of 3)...
43008 file records processed.
File verification completed.
33 large file records processed.
0 bad file records processed.
2 EA records processed.
44 reparse records processed.
CHKDSK is verifying indexes (stage 2 of 3)...
62154 index entries processed.
Index verification completed.
0 unindexed files scanned.
0 unindexed files recovered.
CHKDSK is verifying security descriptors (stage 3 of 3)...
43008 file SDs/SIDs processed.
Security descriptor verification completed.
9574 data files processed.
CHKDSK is verifying Usn Journal...
3641432 USN bytes processed.
Usn Journal verification completed.
Windows has checked the file system and found no problems.

26108927 KB total disk space.
6204500 KB in 32325 files.
25944 KB in 9575 indexes.
0 KB in bad sectors.
113799 KB in use by the system.
65536 KB occupied by the log file.
19764684 KB available on disk.

4096 bytes in each allocation unit.
6527231 total allocation units on disk.
4941171 allocation units available on disk.
Failed to transfer logged messages to the event log with status 50.

X:\Sources>_
```

I wish you all success!

You finished reading the article "**How to fix '0x00000109: selected entry could not be loaded' on Windows**" edited by the [TipsMake](#) team. We hope this article has provided you with many useful tech tips and tricks. You can search for similar articles on tips and guides. Thank you for reading and for following us regularly.