

How to find your printer's IP address on Windows

Sometimes, you need to install a printer on other computers. To install a printer, the first requirement is the printer's IP address. In this article, TipsMake will guide you on how to find your printer's IP address on Windows 10, 8, and Windows 7.

Checking your computer's IP address is easy, but how do you **check your printer's IP address** on Windows 10, 8, and 7? In this article, TipsMake will guide you through two ways to find your printer's IP address.

Method 1: Find the printer's IP address through the Configuration Sheet.

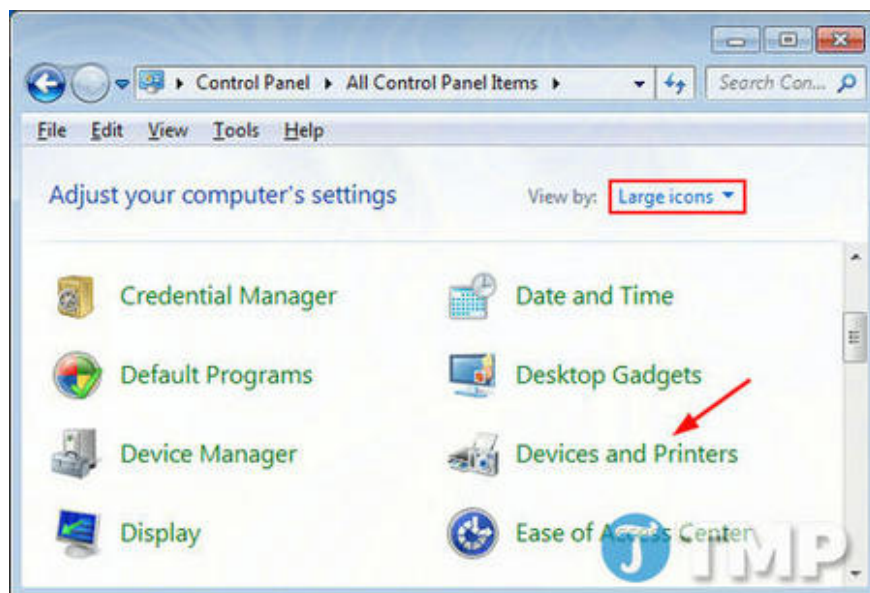
If you access the printer in the usual way, you can print pages by pressing and holding the Power button or the Go button on the printer for about 5 to 10 seconds. To find which button or combination of buttons is used, you will have to look it up in the printer's user manual.

Some printers have an option to view the printer's IP address directly from the system menu. For example, if you are using an HP Office Jet Pro 8600 printer, you can simply go to **Home Screen => Setup** , then select **Reports** and choose **Network Configuration** to see all the printer's network details.

Method 2: Find the printer's IP address on Windows

To perform this procedure, you must have a printer installed on your system. If your computer has **a printer installed** , here's how to find the printer's IP address on Windows 10, 8, and 7.

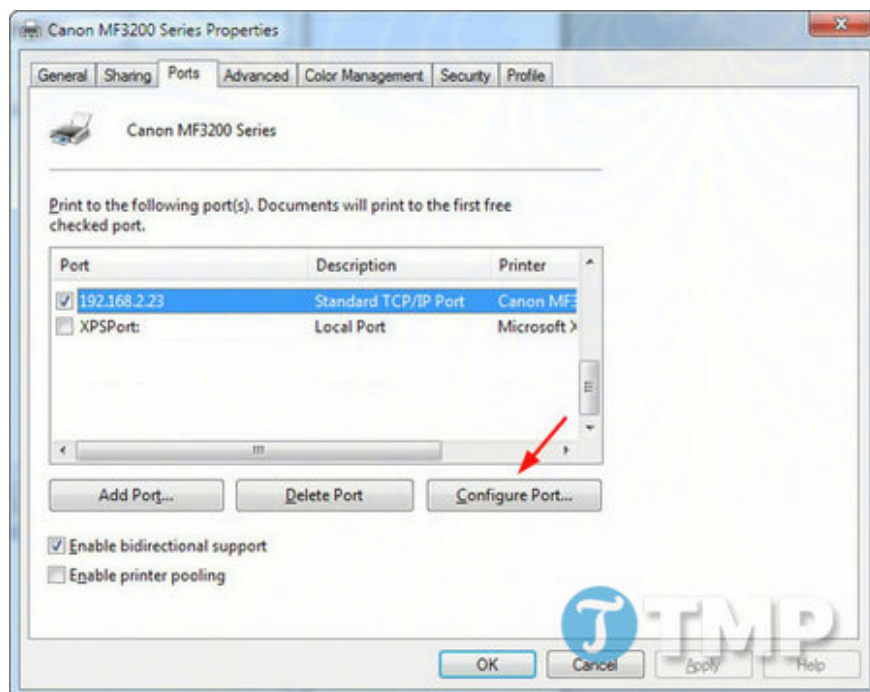
Step 1 : First, open the Control Panel window and set the **View by** option to **Large icons** . Then, find and click on **Devices and Printers** .



Step 2 : Right-click on the printer installed on your computer, and from the menu that appears on the screen, select **Printer Properties** .



Step 3 : In the Properties window, access **the Ports tab** , select the port with the checkmark, and then select **Configure Port** .



Step 4 : In the next window, you will see the printer's IP address in the **Printer Name or IP Address** box .

Above, TipsMake has guided you on how **to find the IP address of your printer** on Windows 10, 8, and 7. If you have any questions or want to add more ways to find the IP address of your printer, you can leave your comments in the section below the article.

You finished reading the article "**How to find your printer's IP address on Windows**" edited by the [TipsMake](#) team. We hope this article has provided you with many useful tech tips and tricks. You can search for similar articles on tips and guides. Thank you for reading and for following us regularly.