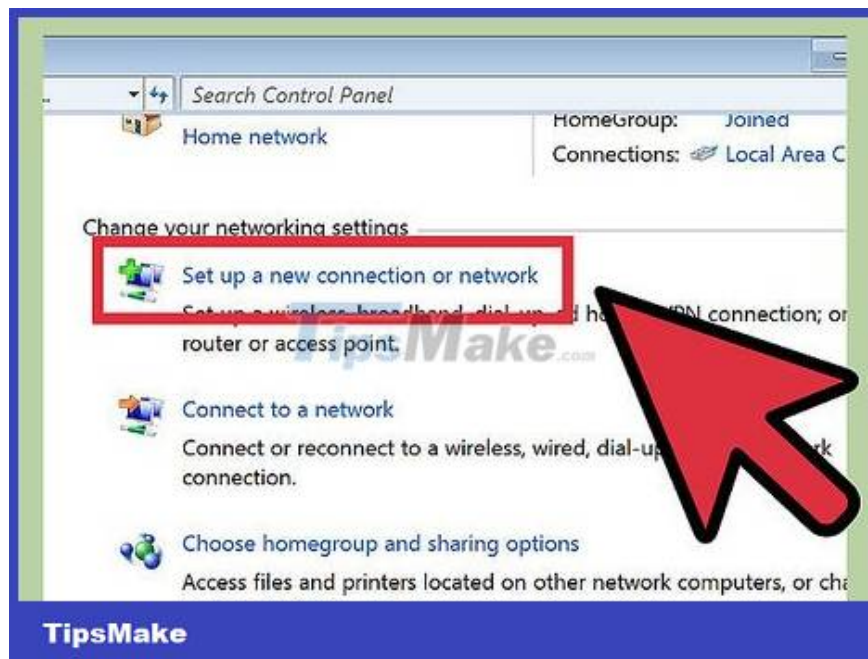


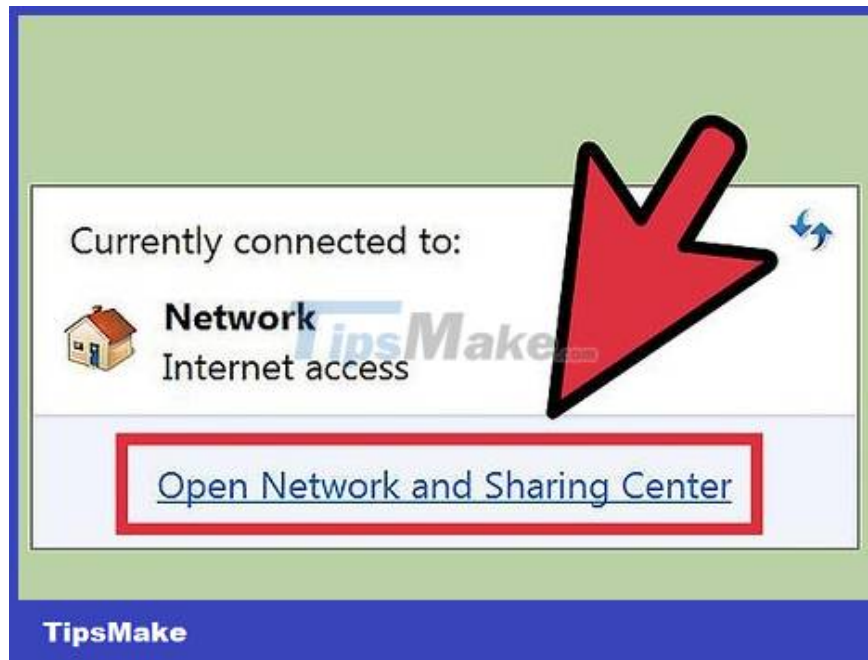
How to Find Your Computer's MAC Address

MAC address (Media Access Control - Environment access control) is a series of numbers that identifies the devices used to connect to the network installed on your computer. MAC addresses consist of 6 pairs of characters, separated by colons. To connect to the network successfully, you need to have the MAC address of the router. To find the MAC address on any networked device, use one of the following methods.

Windows Vista, 7 or 8 operating system

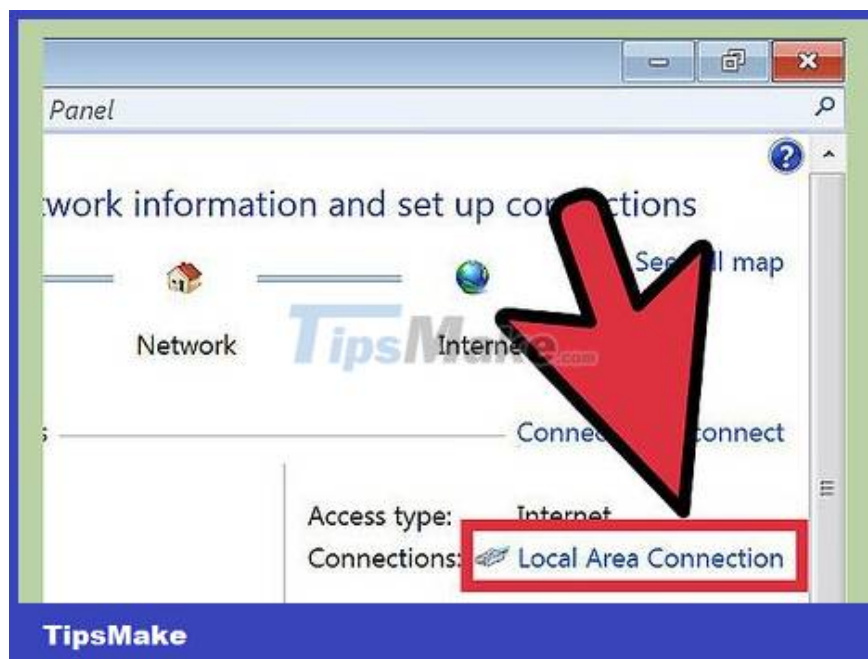


Connect to the network. This method is only available when your computer is connected to a network. Connect to the network protocols for which you need to get the MAC address (also known as the physical address or identifier of each device). Connection protocols include: Wi-Fi if you need the MAC address of the wireless network card (wireless card) and Ethernet if you need the MAC address of the wired network card.

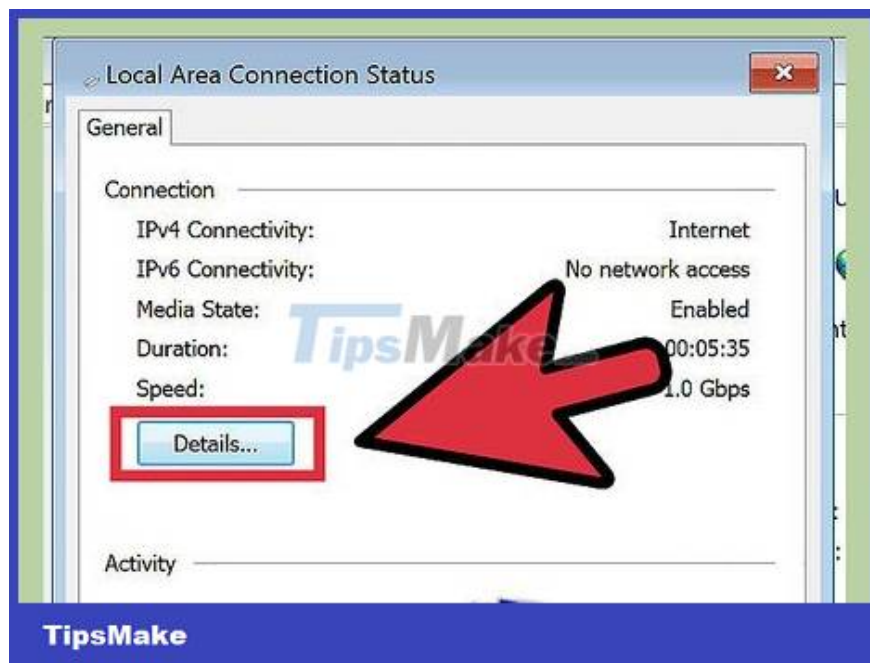


Click on the connection icon in the system tray. The icon looks like a small picture (see image above), or like a small computer screen. After clicking on it, select "Open Network and Sharing Center".

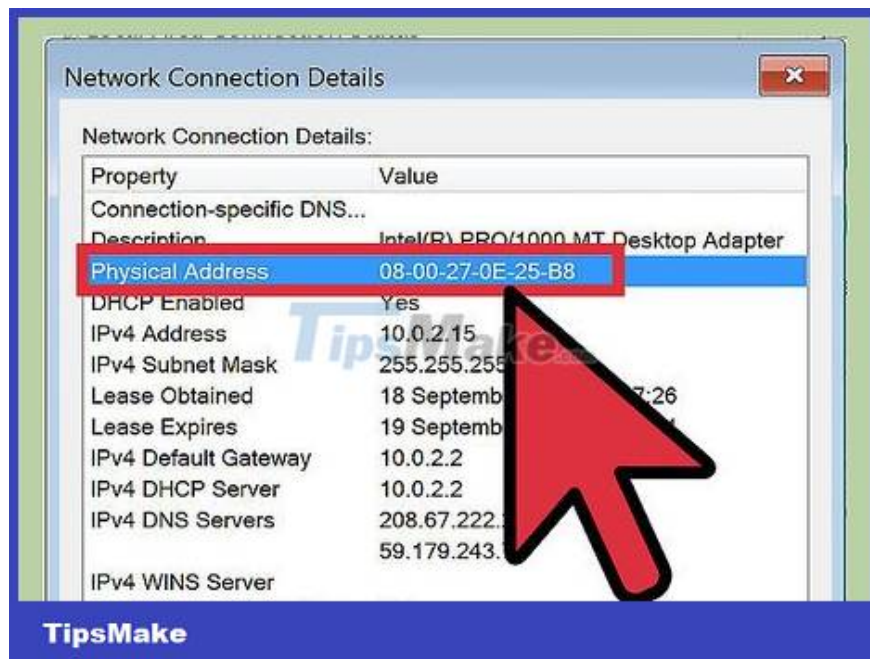
With the Windows 8 operating system, run the application on the Desktop located at the Start screen. When you are in Desktop Mode, right-click on the connection icon in the system tray. Select "Network and Sharing Center".



Find the name of the network and click on it. It is always displayed after the word Connections. After clicking, a small window will open as shown in the image.



Click on Details. Then, a list of network configuration information will appear, similar to when you use the IPConfig tool in the Command Prompt.

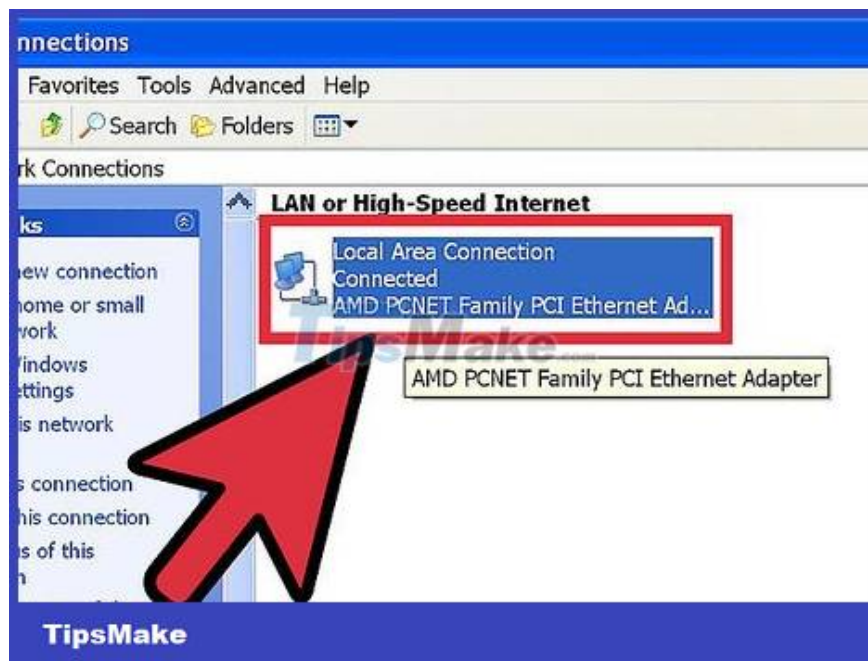


Find the Physical Address line. That is the MAC address information you need.

Windows 98 and XP operating systems

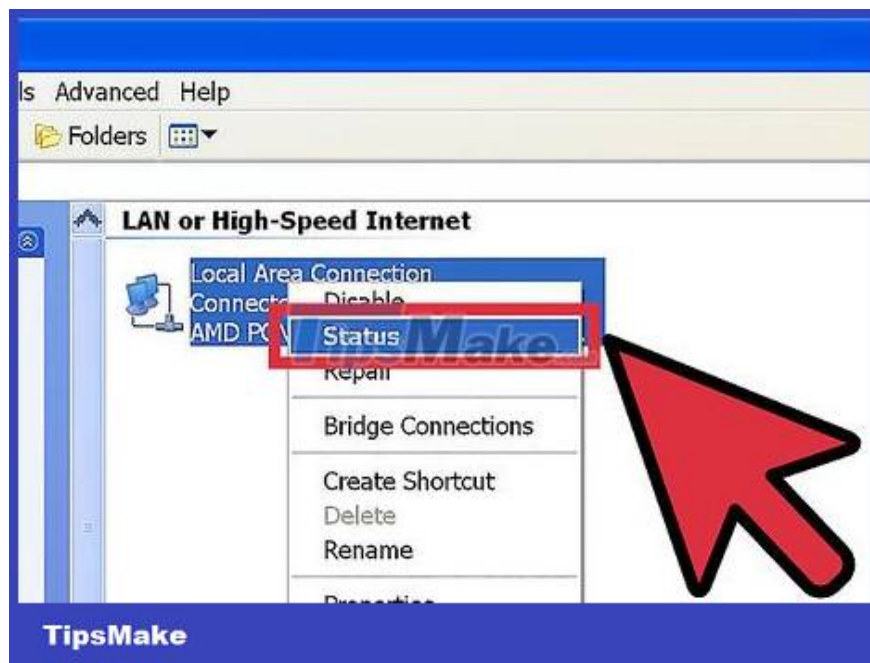


Connect to the network. This method is only available when your computer is connected to a network. Connect to the network protocols for which you need to get the MAC address (also known as the physical address or identifier of each device). Connection protocols include: Wi-Fi if you need the MAC address of the wireless network card (wireless card) and Ethernet if you need the MAC address of the wired network card.

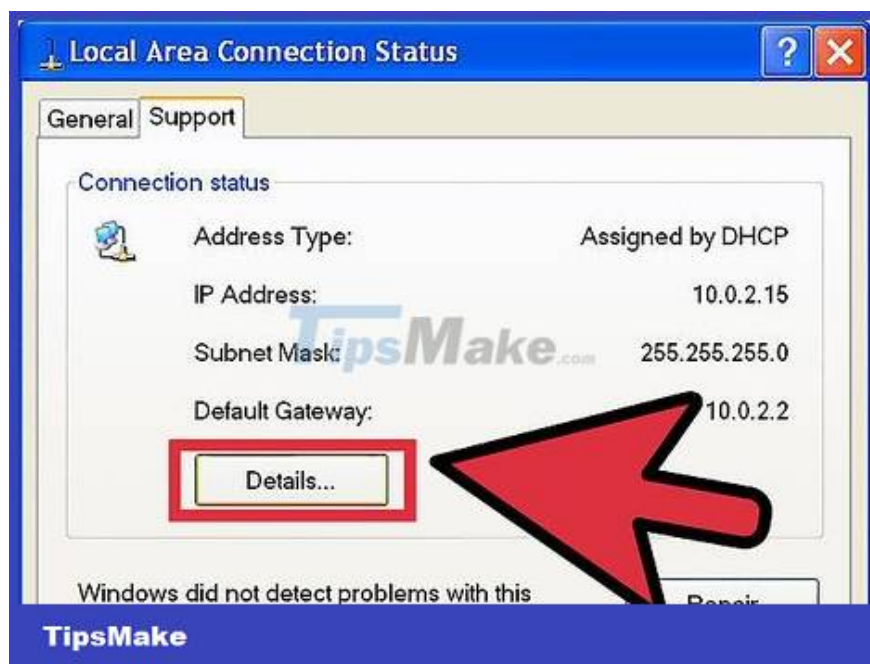


Open the network connections section (Network Connections). If you don't have this icon on your Desktop, find it in the taskbar (located in the bottom right corner of the Windows toolbar) and click on it to open information about the current connection. at or list of available connections.

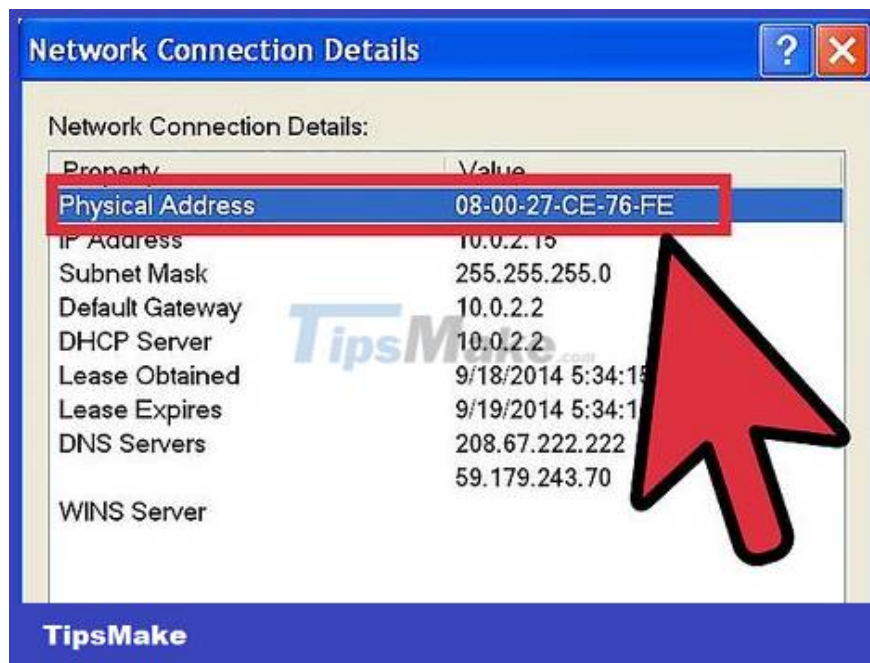
You can also access Network Connections from the Control Panel, located in the Start menu.



Right-click on the current connection and select Status.

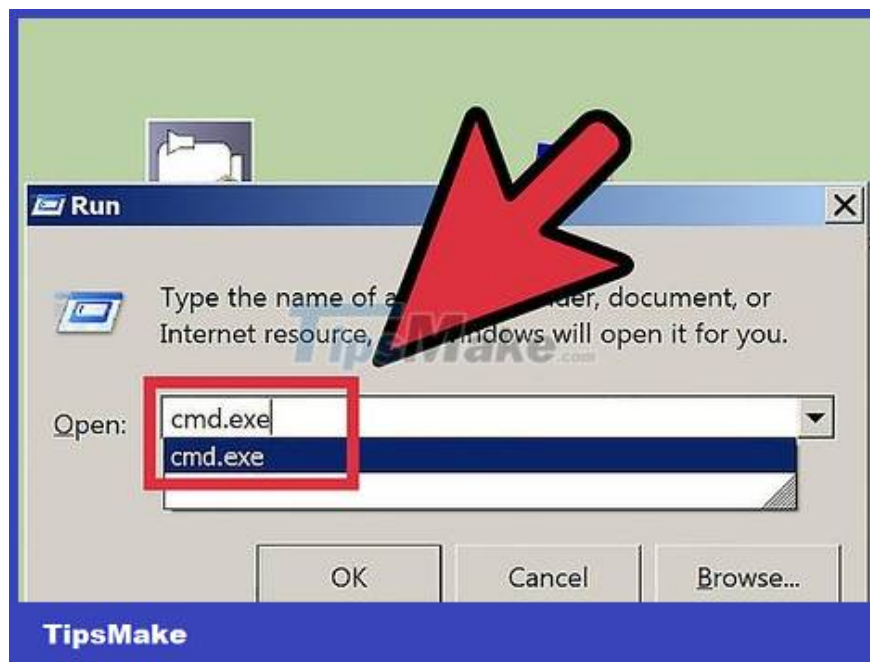


Select Details. However, in some versions of Windows, it may be located in the Support Tab. Then, a list of network configuration information will appear, similar to when you use the IPConfig tool in the Command Prompt.



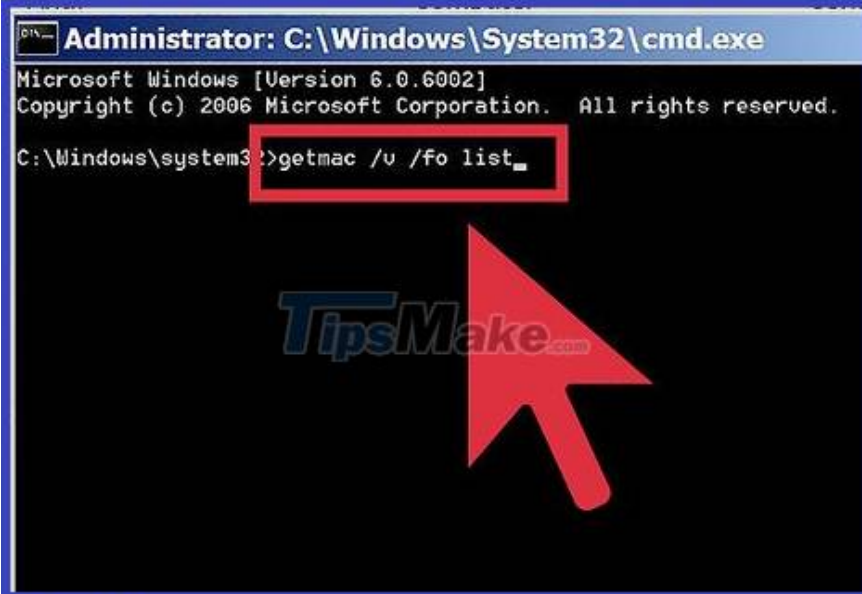
See the Physical Address line. That is the MAC address information you need.

Any Windows Version



Open Command Prompt. ? Win+R Press the + keys and type cmd in the Run command line. Press the key ? Enter to open Command Prompt.

For Windows 8, press the ? Win+ key X and select Command Prompt from the menu.




```
Administrator: C:\Windows\System32\cmd.exe
Microsoft Windows [Version 6.0.6002]
Copyright (c) 2006 Microsoft Corporation. All rights reserved.

C:\Windows\system32>getmac /u /fo list_
```

TipsMake

Run the GetMAC command. At the Command Prompt window, type `getmac /v /fo list` and press ? Enter. Then, the configuration information of all networks will be displayed on the screen.



```
Administrator: C:\Windows\System32\cmd.exe
Microsoft Windows [Version 6.0.6002]
Copyright (c) 2006 Microsoft Corporation. All rights reserved.

C:\Windows\system32>getmac /u /fo list

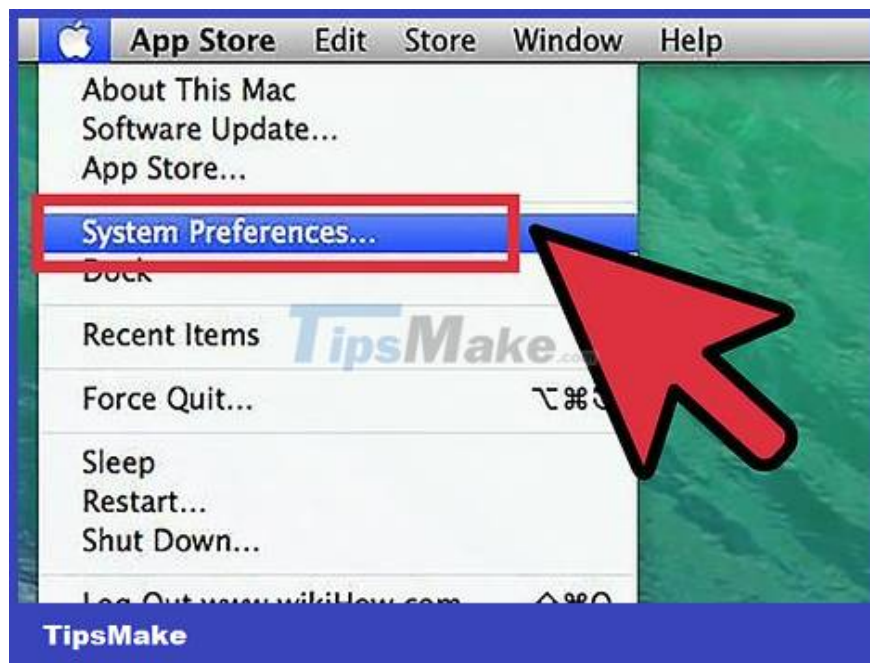
Connection Name: Local Area Connection
Network Adapter: Intel(R) PRO/1000 MT Desktop Adapter
Physical Address: 08-00-27-A0-2E-82
Transport Name: {Device\Propaganda\... E06-5CE5-4D16-B252-8B6DC35F4133}

C:\Windows\system32>
```

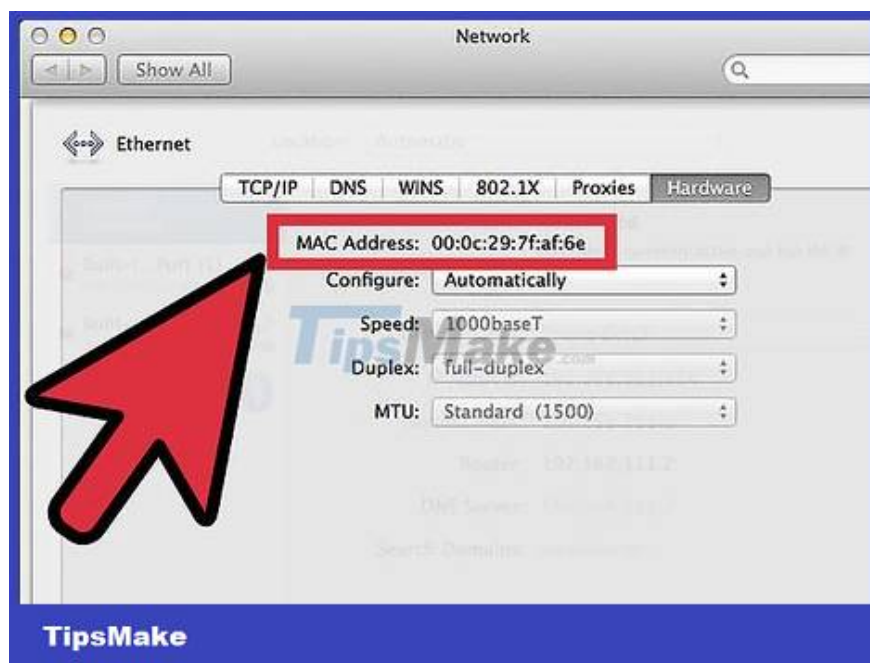
TipsMake

Find Physical Address. This is another way to describe your MAC address information. Get the correct physical address of the device you want to connect to – as there will be several devices listed here. For example, your wireless connection will have a different MAC address than your Ethernet connection.

Mac OS X 10.5 (Leopard) and Later Versions



Open System Preferences. You can find it by clicking on the Apple logo located in the top left corner of the screen. Make sure your computer is connected to the network for which you are looking for MAC address information.

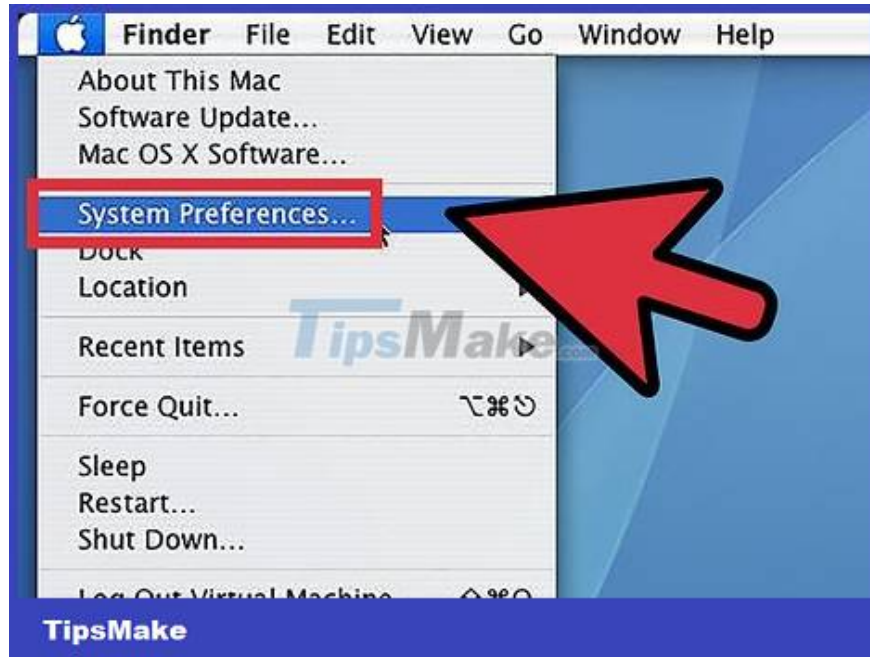


Choose your connection. Select Network and select Airport or Built-in Ethernet, depending on the connection method you are using. The connections will be listed in the left pane.

For an Ethernet connection, select Advanced and point to the Ethernet card. At the top, you will see the Ethernet ID, which is the MAC address you need.

For an AirPort connection, select Advanced and point to the AirPort tab. There you will see information about the AirPort's identification number (AirPort ID), which is the MAC address you need.

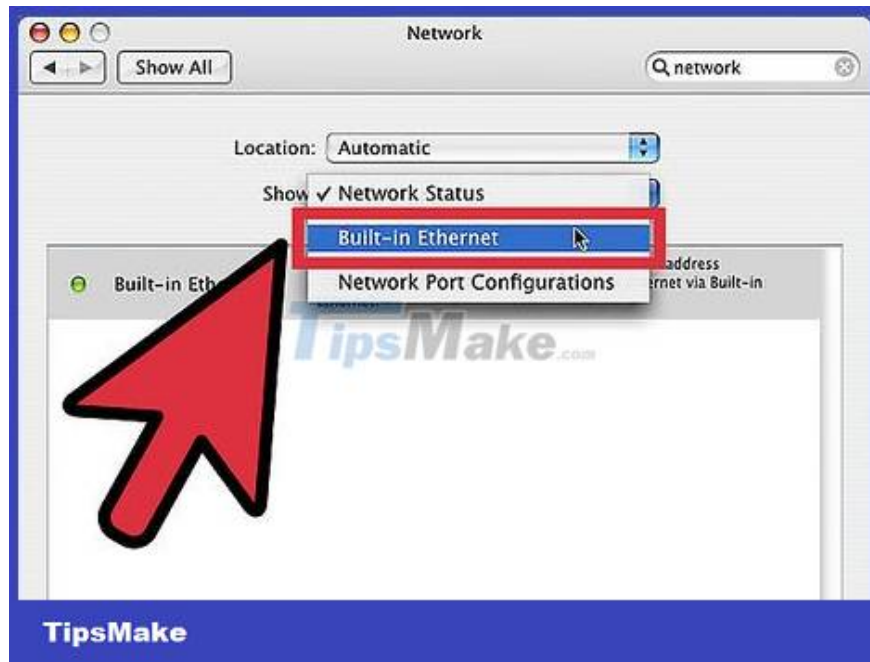
Mac OS X 10.4 (Tiger) and Earlier Versions



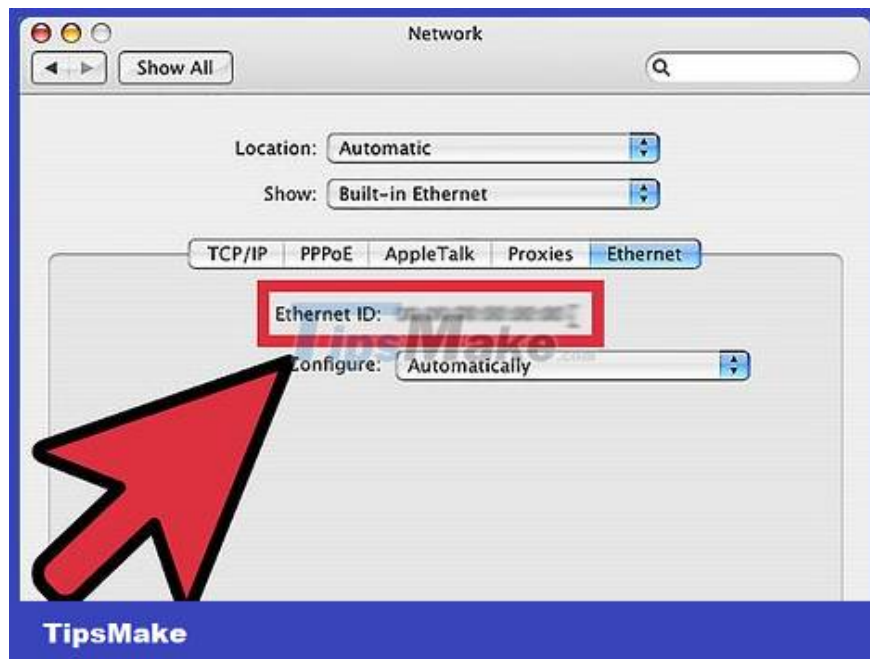
Open System Preferences. You can find it by clicking on the Apple logo located in the top left corner of the screen. Make sure your computer is connected to the network for which you are looking for MAC address information.



Select Network.



Select connections from the Show category. The Show category will list all devices connecting to the network. Select Ethernet or AirPort connection.

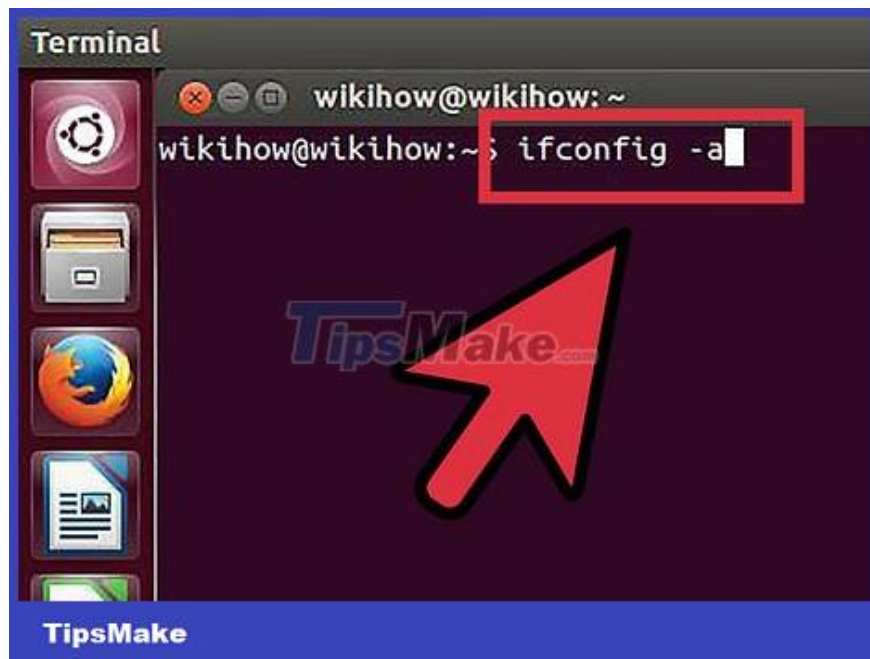


Find the AirPort ID or Ethernet ID. When you select a connection in the Show category, click on the corresponding tab (Ethernet or AirPort). The MAC address of the Ethernet ID or AirPort ID will be displayed.

Linux operating system



Open Terminal. Depending on your system, it may be called Terminal, Xterm, Shell, Command Prompt or something similar. Typically, you will find it in the Accessories folder located in Applications (or equivalent).



Open the configuration interface. Tap `ifconfig -a` and press `?` Enter. If you are denied access, type `sudo ifconfig -a` and enter your password.

```
wikihow@wikihow:~$ ifconfig -v
eth0      Link encap:Ethernet  HWaddr 08:00:27:15:84:10
          inet addr:10.0.2.15  Bcast:10.0.2.255  Mask:255.255.255.0
          inet6 addr: fe80::a00:27ff:fe15:8410/64 Scope:Link
          UP BROADCAST RUNNING MULTICAST MTU:1500 Metric:1
          RX packets:90 errors:0 dropped:0 overruns:0 frame:0
          TX packets:133 errors:0 dropped:0 overruns:0 carrier:0
          collisions:0 txqueuelen:1000
          RX bytes:30496 (30.4 KB)  TX bytes:21760 (21.7 KB)

lo        Link encap:Local Loopback
          inet addr:127.0.0.1  Mask:255.0.0.0
          inet6 addr: ::1/128 Scope:Host
          UP LOOPBACK RUNNING MTU:65536 Metric:1
          RX packets:88 errors:0 dropped:0 overruns:0 frame:0
          TX packets:88 errors:0 dropped:0 overruns:0 carrier:0
          collisions:0 txqueuelen:0
          RX bytes:8214 (8.2 KB)  TX bytes:8214 (8.2 KB)
```

TipsMake

Find MAC address. Scroll down until you find the connection you need (The main Ethernet port will have a label eth0). Find its HWaddr, this is your MAC address.

iOS operating system



Open Settings. You can find the Settings app on the Home Screen. Select General information (General).



Select Device information (About). The screen will display specific information about the device. Scroll down until you see the Wi-Fi address. This is the device's MAC address.

This guide applies to all devices using the iOS operating system: iPhone, iPod and iPad

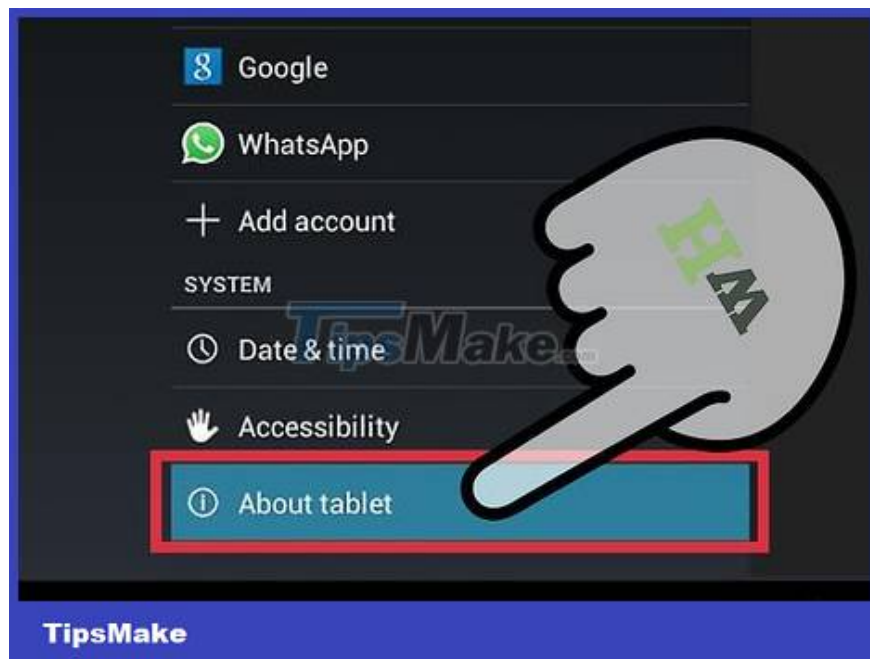


Find the MAC address of the Bluetooth connection. If you need the Bluetooth address, you can find it right under the Wi-Fi Address section.

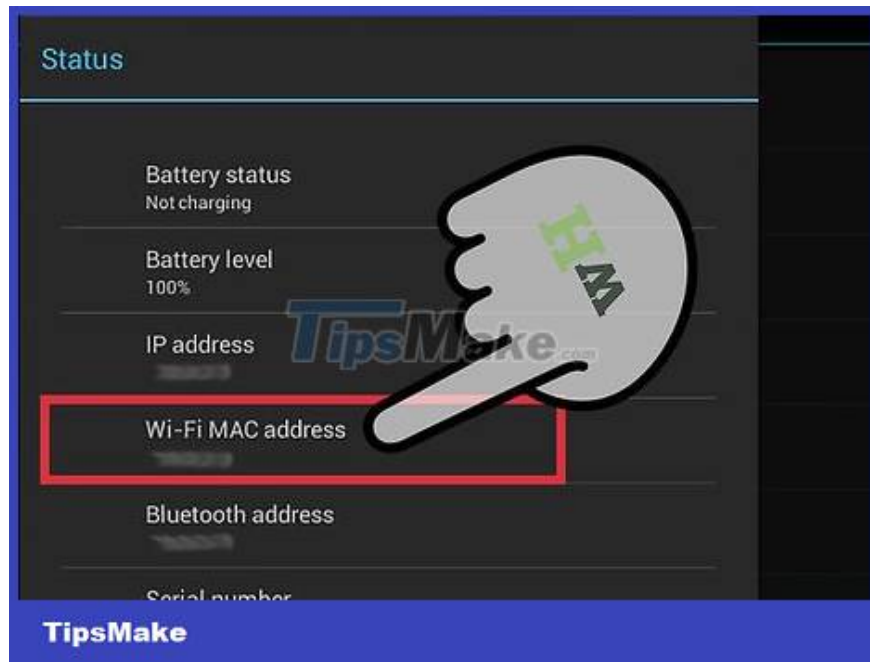
Android



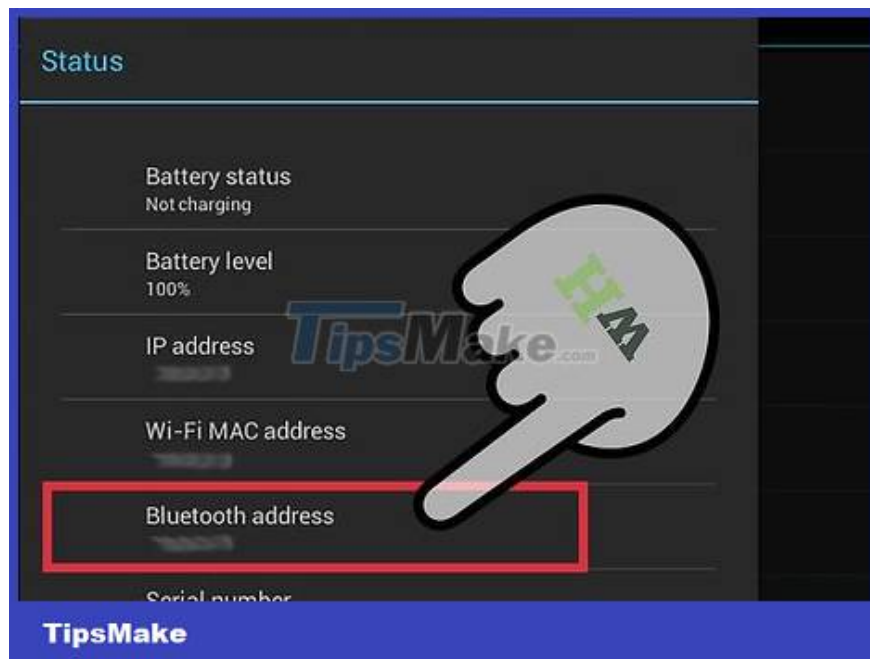
Open Settings. Open the Home Screen, press the Menu button and select Settings. You can also open Settings by selecting the app in the App Drawer.



Scroll down to Device Information (About Device). This item is usually at the bottom of the Settings list. In the About Device category, select Status.



Select the MAC address to search. Scroll down until you find the Wi-Fi MAC address information. This is the device's MAC address.

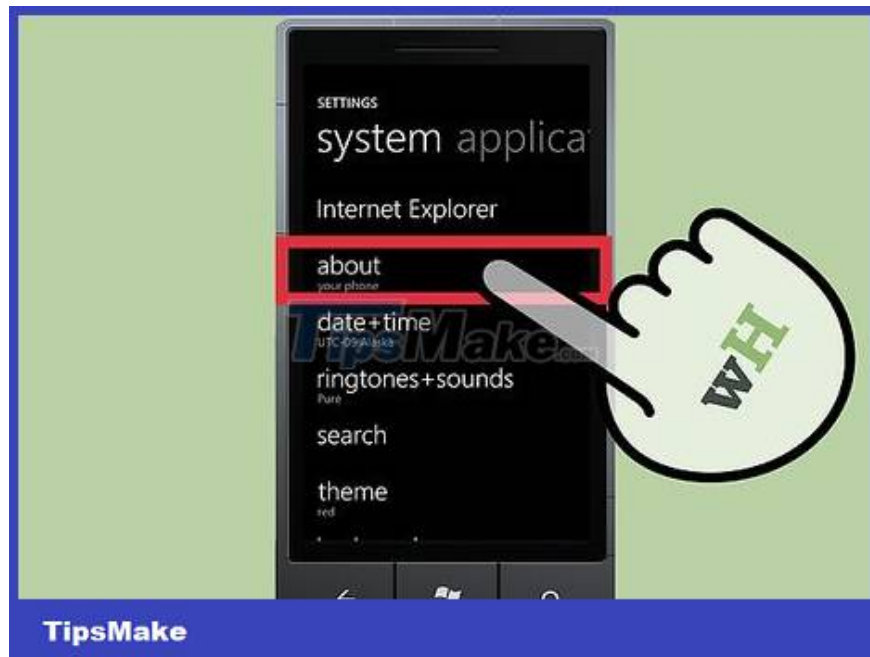


Find the Bluetooth MAC address. The Bluetooth MAC address is displayed just below the Wi-Fi MAC address. The Bluetooth function must be turned on before you view its address information.

Windows Phone 7 Operating System or Newer Version



Open Settings. You can access this item by selecting the main screen (Home Screen) and swiping left. Scroll down until you see the Settings option.

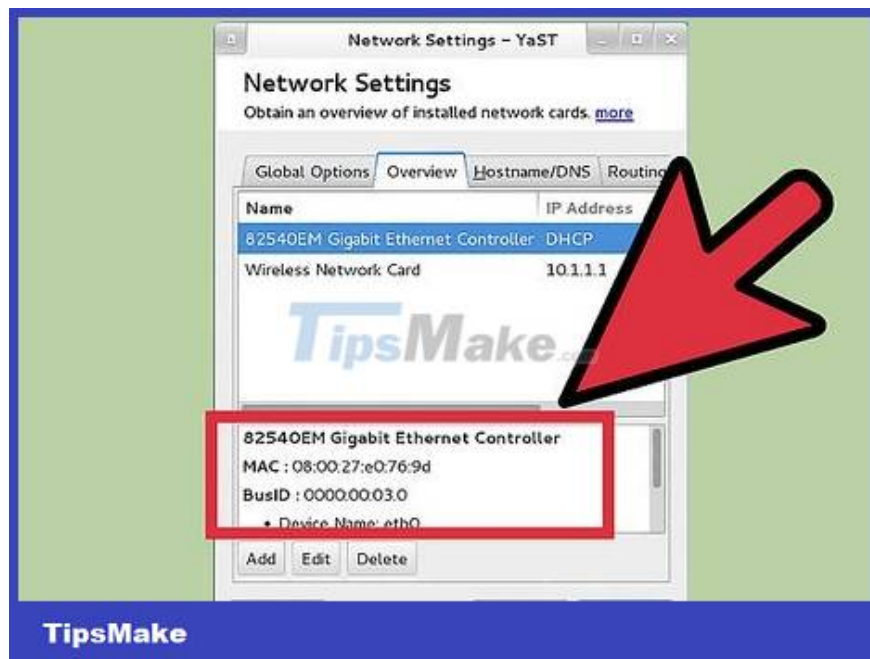


Find Device Information (About). In the Settings section, scroll down and select About. There, select More Info. The MAC address to be searched will be displayed at the bottom of the screen.

Chrome OS operating system



Select the Network icon. This icon is located in the lower right corner of the desktop and looks like four radiating bars.



Open Network Status. In this category, select the "i" icon, located in the lower right corner. A message will appear and display the device's MAC address.

Electronic Gaming Devices

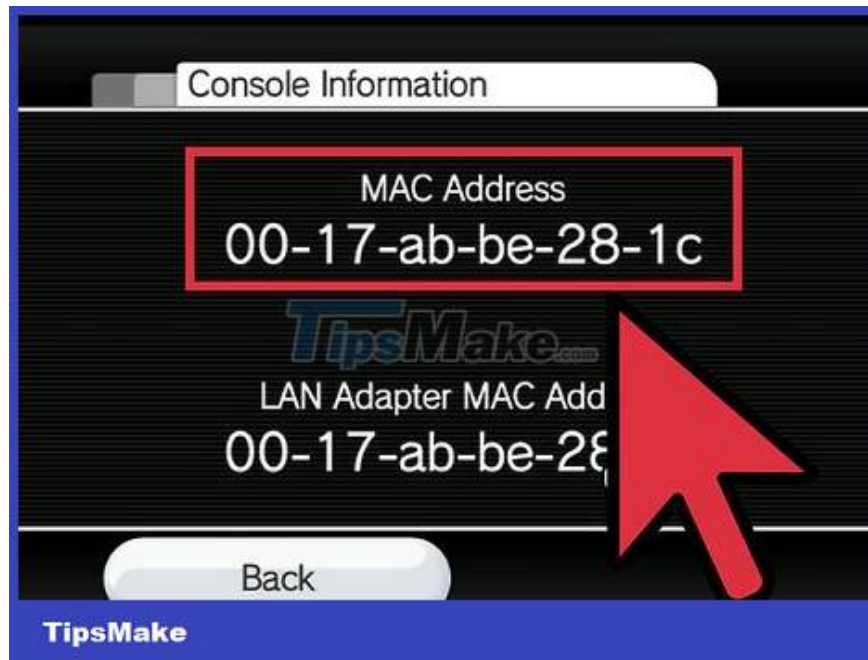
Find your PlayStation 3 device's MAC address. In the PlayStation main menu, scroll left until you see the Settings category. Continue scrolling down until you see System Settings.

Scroll down and select System Information. The MAC address will be displayed immediately below the IP address.

Find your Xbox 360's MAC address. Open System Settings from the Dashboard. Open Network Settings and select Configure Network.

Select the Additional Settings tab and select Advanced Settings. Select Alternate MAC Address.

The MAC address will be listed here. It may not be displayed separated by colons.



Find the MAC address of your Wii device. Select the Wii icon in the lower left corner of the Channel menu. Scroll to page 2 of the Settings category and select Internet. Select "Console Information" and the MAC address will be displayed here.

You finished reading the article "**How to Find Your Computer's MAC Address**" edited by the [TipsMake](#) team. We hope this article has provided you with many useful tech tips and tricks. You can search for similar articles on tips and guides. Thank you for reading and for following us regularly.