

How to Find Windows 7 Product Key

Today's TipsMake will show you how to find the product key to install an original copy of Windows 7 on your computer. A product key is a 25-character code required when activating Windows. You may need this code during a complete reinstallation of Windows, or to activate your copy after the installation is complete. If your computer has an official copy of Windows 7 pre-installed, the code may be on the COA (Certificate of Authenticity) label. If Windows 7 is installed and activated, you can use Command Prompt or a third-party application to find the product key.

Locate the COA label



Check the COA label on the computer. If your PC has Windows 7 pre-installed, you'll probably find the product code in a COA label somewhere on the computer.

The product key is usually printed on the COA label.

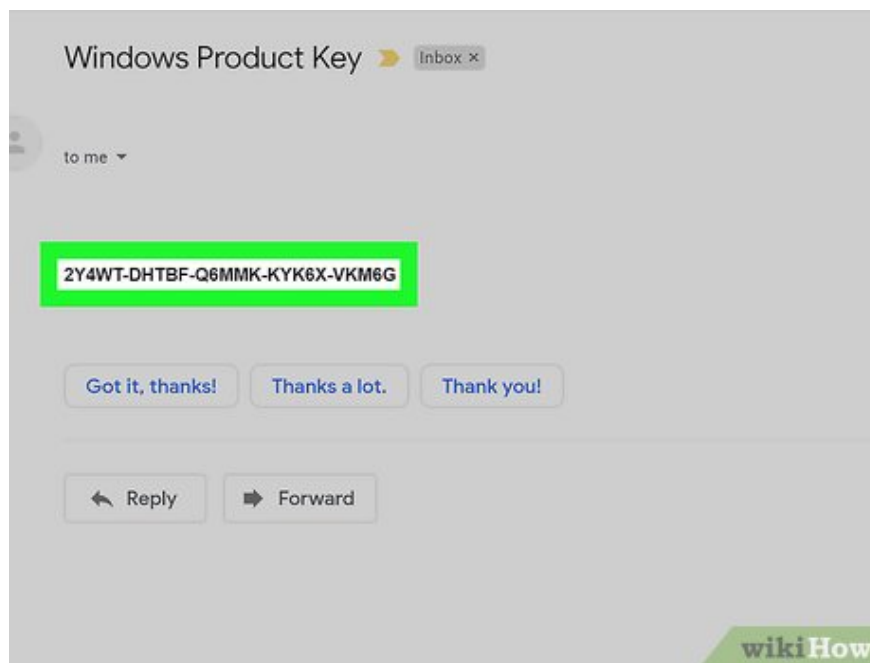
The COA label can be located on the top, bottom, or any side of the computer.

The COA label helps you identify that your computer is running a genuine version of Windows, and also provides the product key.

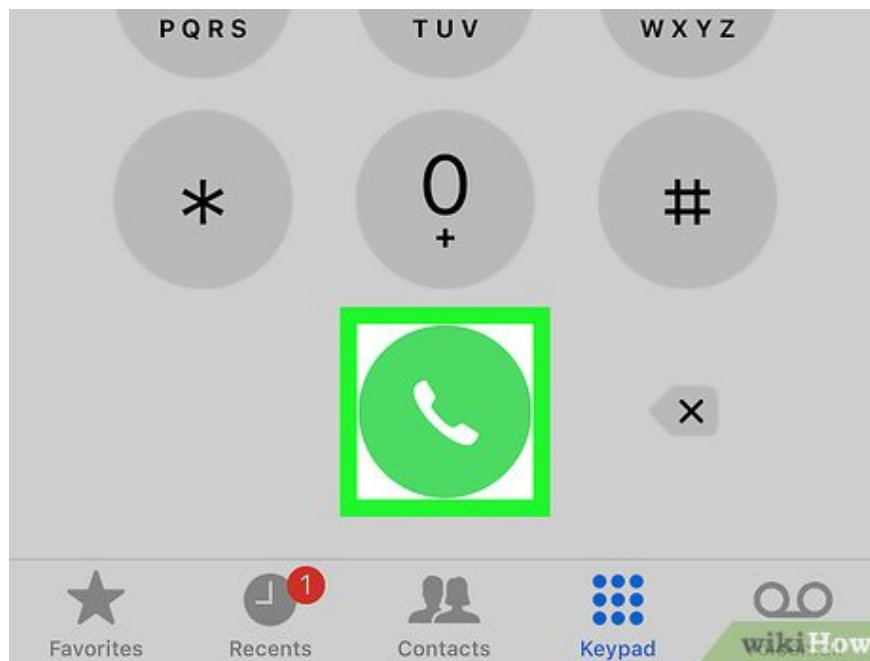
If you can't find this label on your computer, try removing the PC's battery (for computers that use a removable battery). Maybe the COA label is here.



Check the label or tag inside the box in which your copy of Windows is packaged. If you purchased an external copy of Windows as an installation CD or package, look for the product key on the label or tag inside the box.



Check the confirmation email in your inbox for online purchases. If you purchased a copy of Windows online, you can check your registered email for a confirmation email. The product key will be in the body of this email.



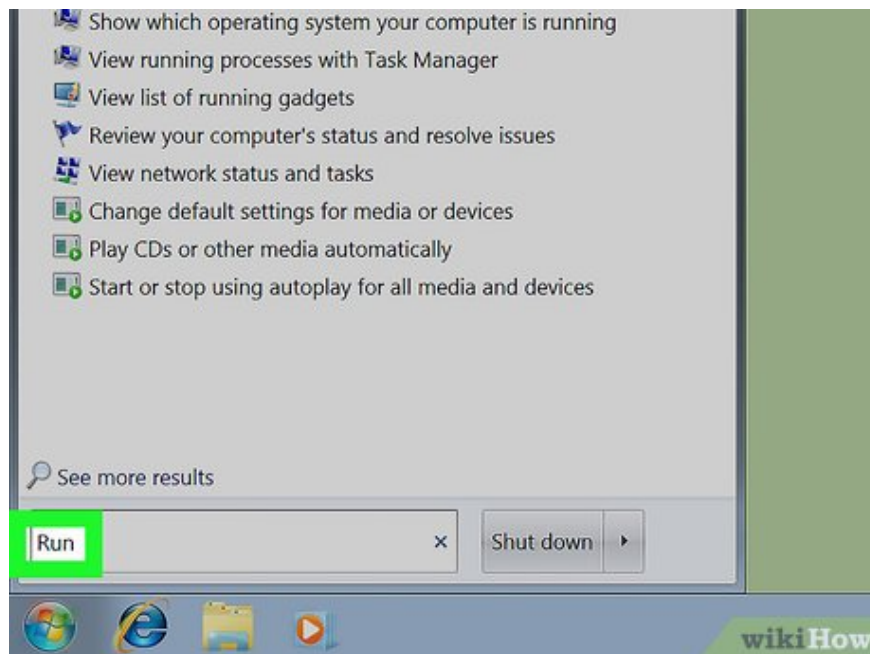
Contact the PC manufacturer to ask about the product key. If the product key has been lost or misplaced, contact the computer manufacturer and ask about your computer's Windows 7 product key.

Use Command Prompt



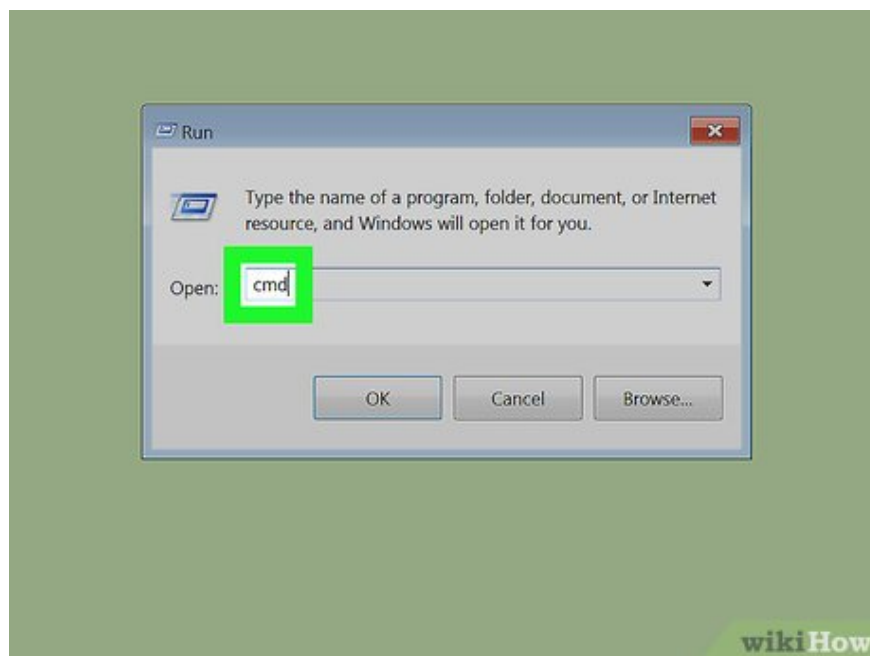
Open your computer's Start menu. Click the Windows icon in the lower left corner to open the Start menu.

You can only apply this method if your PC has a copy of Windows pre-installed from the factory.

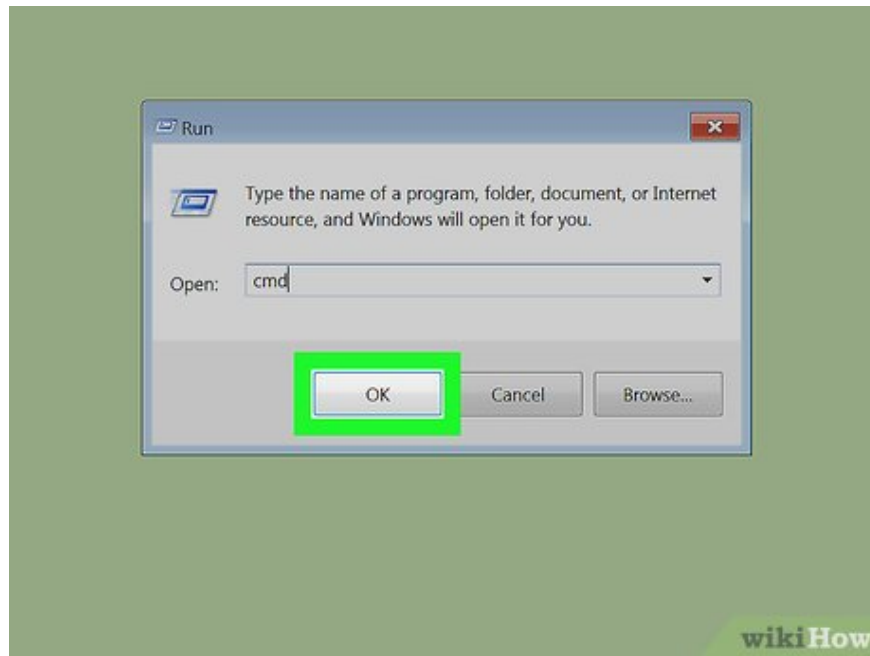


Find and select Run in the Start menu. This program allows you to run and open applications directly on your computer.

Or you can press ? Win+ R to open the Run window.

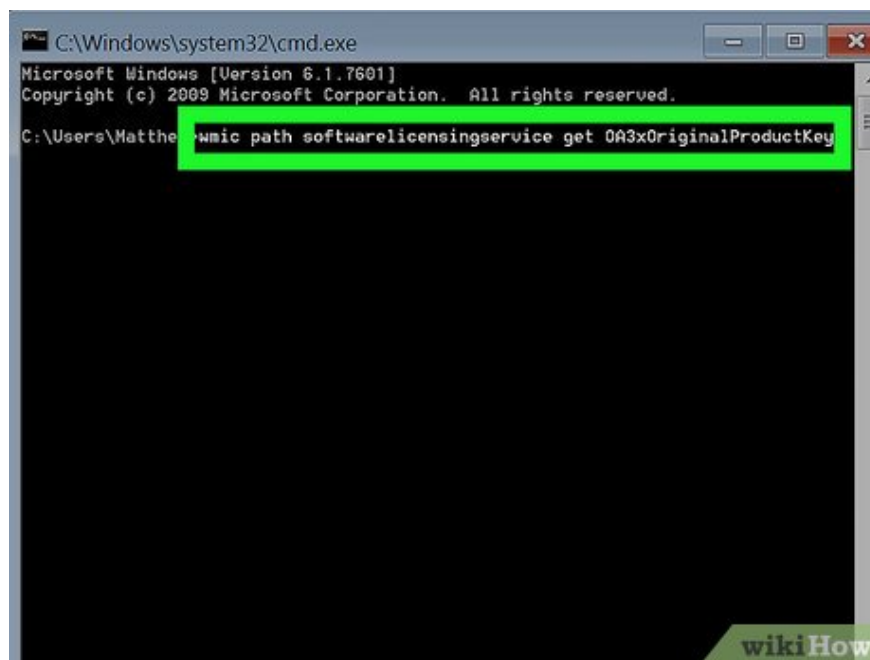


Enter cmd into the Run window. Click the text box next to "Open" and enter the Command Prompt abbreviation.



Click OK in the Run window. Command Prompt will open in a new window.

Or you can press `Enter` on the keyboard.



Type or paste the command below into the Command Prompt window:

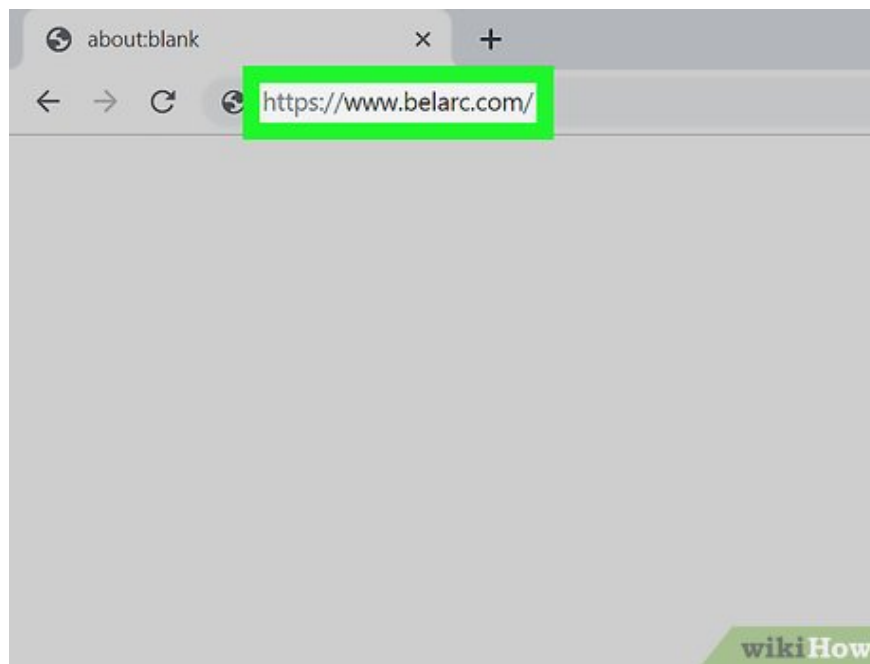
```
wmic path softwarelicensingervice get OA3xOriginalProductKey.
```

This command will display the product key if the computer came with a copy of Windows 7 that came from the factory.



Click ? **Enter** to execute the command. The product key will appear in the Command Prompt window.

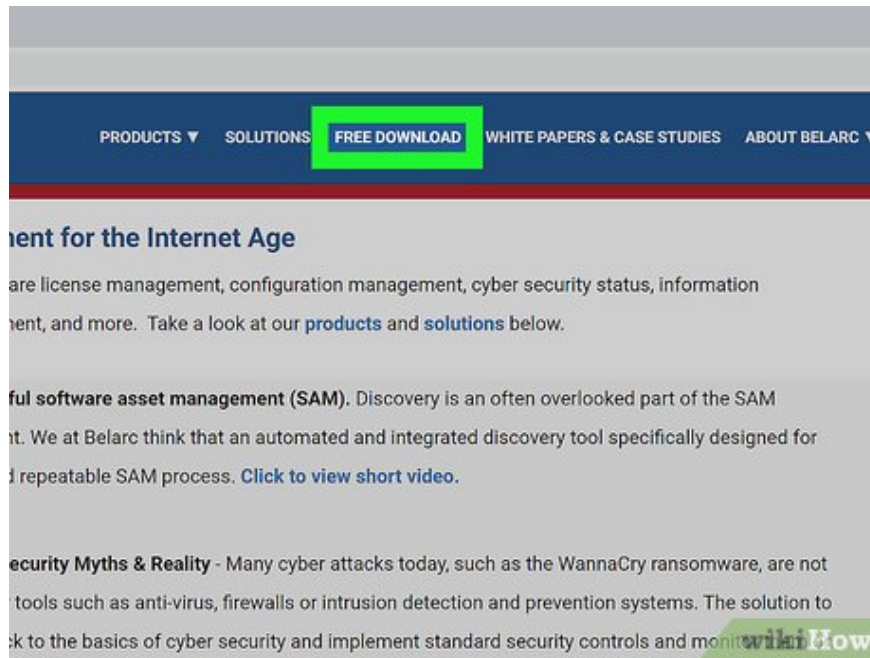
Use the Belarc Advisor application



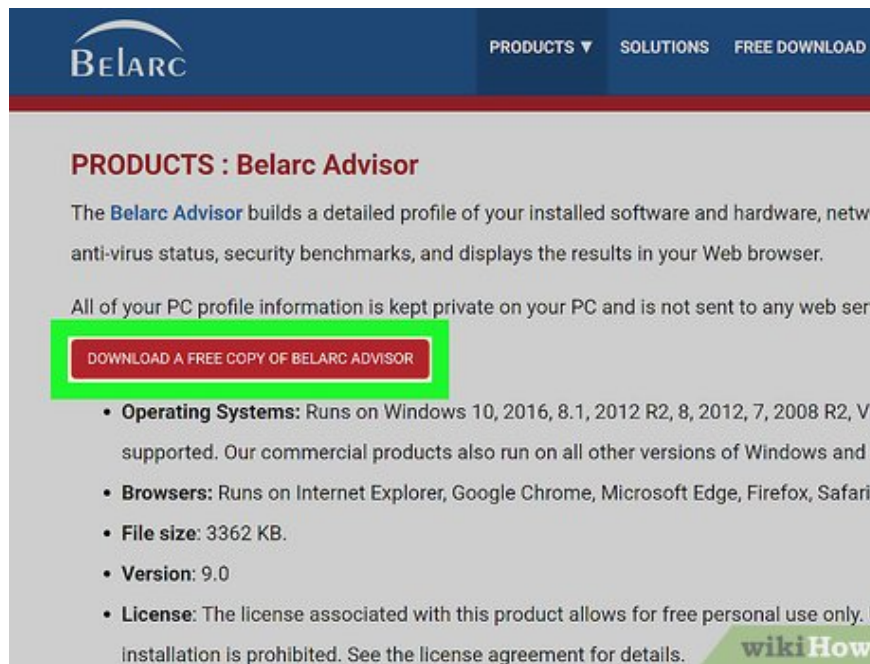
Open <https://www.belarc.com/> in your Internet browser. Type or paste this URL into your browser's address bar and press ? Enter or ? Return.

Belarc Advisor is a free third-party application that displays in your Internet browser all information related to your computer's pre-installed software and hardware.

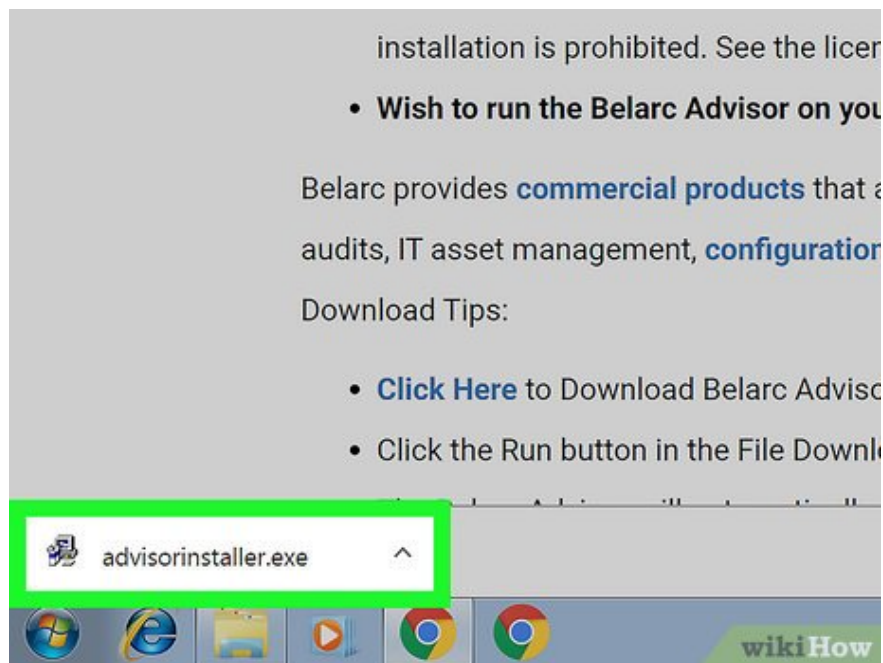
You can launch Belarc Advisor without downloading a permanent copy of the application to your computer.



Click the **FREE DOWNLOAD** tab at the top. This option is in the blue navigation bar at the top of the page.



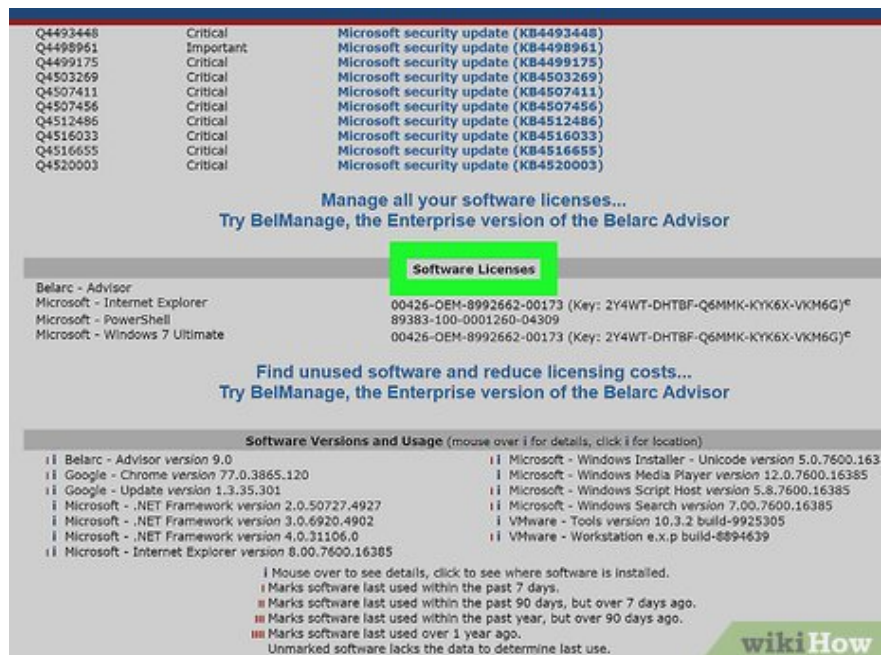
Click the **DOWNLOAD A FREE COPY OF BELARC ADVISOR** button. This red button is near the top left corner of the page. The File Download window will open in the browser.



Click the Run button in the File Download window. The Belarc Advisor application will launch, create your PC's profile system, and open a new browser tab with all the information.

At the top of the information page is the "Belarc Advisor" logo along with the "Computer Profile Summary" table.

Or you can download the file and launch Belarc Advisor offline.



Scroll down and find the "Software Licenses" section. This section is located in the middle of the "Computer Profile Summary" section.

A list of all certificates and software installed on the computer will appear here.

Q4493448	Critical	Microsoft security update (KB4493448)
Q4498961	Important	Microsoft security update (KB4498961)
Q4499175	Critical	Microsoft security update (KB4499175)
Q4503269	Critical	Microsoft security update (KB4503269)
Q4507411	Critical	Microsoft security update (KB4507411)
Q4507456	Critical	Microsoft security update (KB4507456)
Q4512486	Critical	Microsoft security update (KB4512486)
Q4516033	Critical	Microsoft security update (KB4516033)
Q4516655	Critical	Microsoft security update (KB4516655)
Q4520003	Critical	Microsoft security update (KB4520003)

Manage all your software licenses...
Try BelManage, the Enterprise version of the Belarc Advisor

Software Licenses	
Belarc - Advisor	d8385726
Microsoft - Internet Explorer	00426-OEM-8992662-00173 (Key: 2Y4WT-DHTBF-Q6MMK-KYK6X-VKM6G) [®]
Microsoft - Windows 7 Ultimate	89383-100-0001260-04309
	00426-OEM-8992662-00173 (Key: 2Y4WT-DHTBF-Q6MMK-KYK6X-VKM6G) [®]

Find unused software and reduce licensing costs...
Try BelManage, the Enterprise version of the Belarc Advisor

Software Versions and Usage (mouse over <i>i</i> for details, click <i>l</i> for location)	
<i>i</i> Belarc - Advisor version 9.0	<i>l</i> Microsoft - Windows Installer - Unicode version 5.0.7600.16385
<i>i</i> Google - Chrome version 77.0.3865.120	<i>l</i> Microsoft - Windows Media Player version 12.0.7600.16385
<i>i</i> Google - Update version 1.3.35.301	<i>l</i> Microsoft - Windows Script Host version 5.8.7600.16385
<i>i</i> Microsoft - .NET Framework version 2.0.50727.4927	<i>l</i> Microsoft - Windows Search version 7.00.7600.16385
<i>i</i> Microsoft - .NET Framework version 3.0.6920.4902	<i>l</i> VMware - Tools version 10.3.2 build-9925305
<i>i</i> Microsoft - .NET Framework version 4.0.31106.0	<i>l</i> VMware - Workstation e.x.p build-8894639
<i>i</i> Microsoft - Internet Explorer version 8.00.7600.16385	

i Mouse over to see details, click *l* to see where software is installed.
i Marks software last used within the past 7 days.
■ Marks software last used within the past 90 days, but over 7 days ago.
■ Marks software last used within the past year, but over 90 days ago.
■ Marks software last used over 1 year ago.
 Unmarked software lacks the data to determine last use.

Find "Microsoft - Windows 7" in the list. The operating system will be listed under the "Software Licenses" heading.

Q4493448	Critical	Microsoft security update (KB4493448)
Q4498961	Important	Microsoft security update (KB4498961)
Q4499175	Critical	Microsoft security update (KB4499175)
Q4503269	Critical	Microsoft security update (KB4503269)
Q4507411	Critical	Microsoft security update (KB4507411)
Q4507456	Critical	Microsoft security update (KB4507456)
Q4512486	Critical	Microsoft security update (KB4512486)
Q4516033	Critical	Microsoft security update (KB4516033)
Q4516655	Critical	Microsoft security update (KB4516655)
Q4520003	Critical	Microsoft security update (KB4520003)

Manage all your software licenses...
Try BelManage, the Enterprise version of the Belarc Advisor

Software Licenses	
Belarc - Advisor	d8385726
Microsoft - Internet Explorer	00426-OEM-8992662-00173 (Key: 2Y4WT-DHTBF-Q6MMK-KYK6X-VKM6G) [®]
Microsoft - PowerShell	89383-100-0001260-04309
Microsoft - Windows 7 Ultimate	00426-OEM-8992662-00173 (Key: 2Y4WT-DHTBF-Q6MMK-KYK6X-VKM6G) [®]

Find unused software and reduce licensing costs...
Try BelManage, the Enterprise version of the Belarc Advisor

Software Versions and Usage (mouse over <i>i</i> for details, click <i>l</i> for location)	
<i>i</i> Belarc - Advisor version 9.0	<i>l</i> Microsoft - Windows Installer - Unicode version 5.0.7600.16385
<i>i</i> Google - Chrome version 77.0.3865.120	<i>l</i> Microsoft - Windows Media Player version 12.0.7600.16385
<i>i</i> Google - Update version 1.3.35.301	<i>l</i> Microsoft - Windows Script Host version 5.8.7600.16385
<i>i</i> Microsoft - .NET Framework version 2.0.50727.4927	<i>l</i> Microsoft - Windows Search version 7.00.7600.16385
<i>i</i> Microsoft - .NET Framework version 3.0.6920.4902	<i>l</i> VMware - Tools version 10.3.2 build-9925305
<i>i</i> Microsoft - .NET Framework version 4.0.31106.0	<i>l</i> VMware - Workstation e.x.p build-8894639
<i>i</i> Microsoft - Internet Explorer version 8.00.7600.16385	

i Mouse over to see details, click *l* to see where software is installed.
i Marks software last used within the past 7 days.
■ Marks software last used within the past 90 days, but over 7 days ago.
■ Marks software last used within the past year, but over 90 days ago.
■ Marks software last used over 1 year ago.
 Unmarked software lacks the data to determine last use.

Find the product code next to the word (Key : on the right side of the page. The product ID will be in parentheses, next to "Microsoft - Windows 7" on the other side of the page.

You finished reading the article "How to Find Windows 7 Product Key" edited by the [TipsMake](#) team. We hope this article has provided you with many useful tech tips and tricks. You can search for similar articles on tips and guides. Thank you for reading and for following us regularly.