

Enter shell: common startup in the Run box

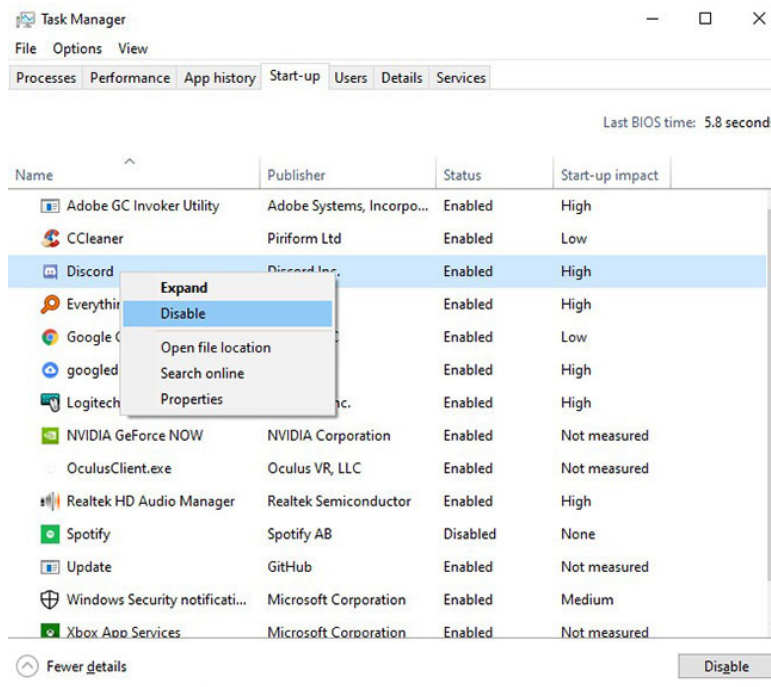
To find the **Startup** folder for users currently logged in to Windows 10, visit:

C:\Users\User\AppData\Roaming\Microsoft\Windows\Start Menu\Programs\Startup

. or press Win + R , then enter **shell: startup**.

Once in this directory, you might be surprised to find that programs that start with Windows 10 aren't really here.

You can add program shortcuts manually here and they will start with the PC from now on, but the applications have been automatically added by third-party software or Windows 10 controlled from **Tasks. Manager** .



You can add program shortcuts manually

To access them, press Ctrl + Shift + Esc , then click the **Startup** tab . From here, you can control the rest of the programs that start with Windows, right-click on them and turn them on or off as you like.

Now you have found the **Startup** folder . You can check if these applications are slowing down the Windows start up process. You can also delay this so that these startup items don't load immediately, in order to improve boot speed.

You finished reading the article "**How to find the Windows 10 Startup folder**" edited by the [TipsMake](#) team. We hope this article has provided you with many useful tech tips and tricks. You can search for similar articles on tips and guides. Thank you for reading and for following us regularly.