

How to find the MAC address - See the MAC address on Windows XP, Windows 7, 8

If you do not know the MAC address on your computer, you follow the article below. Article instructions on how to view the MAC address on Windows XP, Windows 7, 8.

The MAC address is a physical address consisting of a set of six pairs of characters separated by colons, which is the unique code assigned by the manufacturer to each network hardware. MAC stands for Media Access Control.

If you do not know the MAC address on your computer, you follow the article below. Article instructions on how to view the MAC address on Windows XP, Windows 7, 8.

1. Windows XP

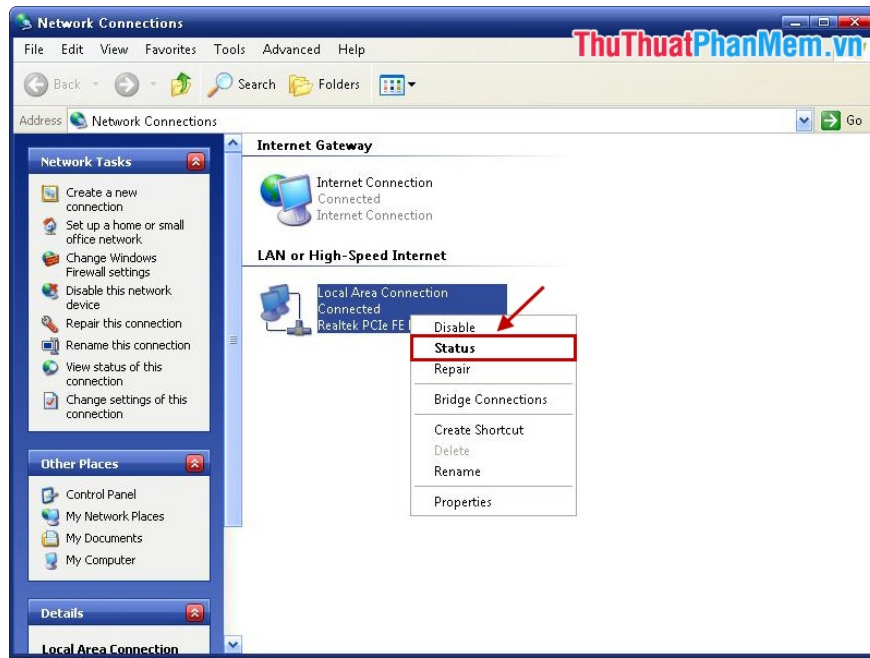
Method 1

Step 1: Press **Windows + R** combination to open the **Run** dialog box .

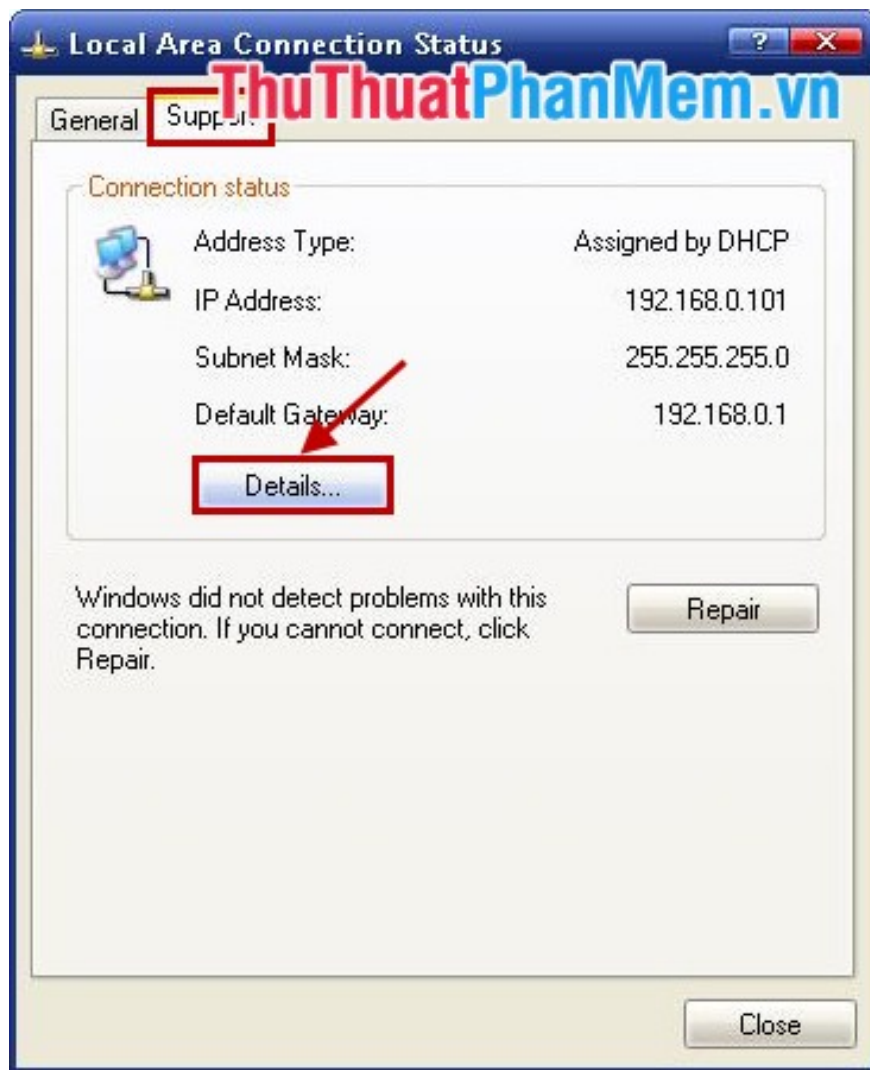
Step 2: In **Run**, enter the keyword *ncpa.cpl* and click **OK** .



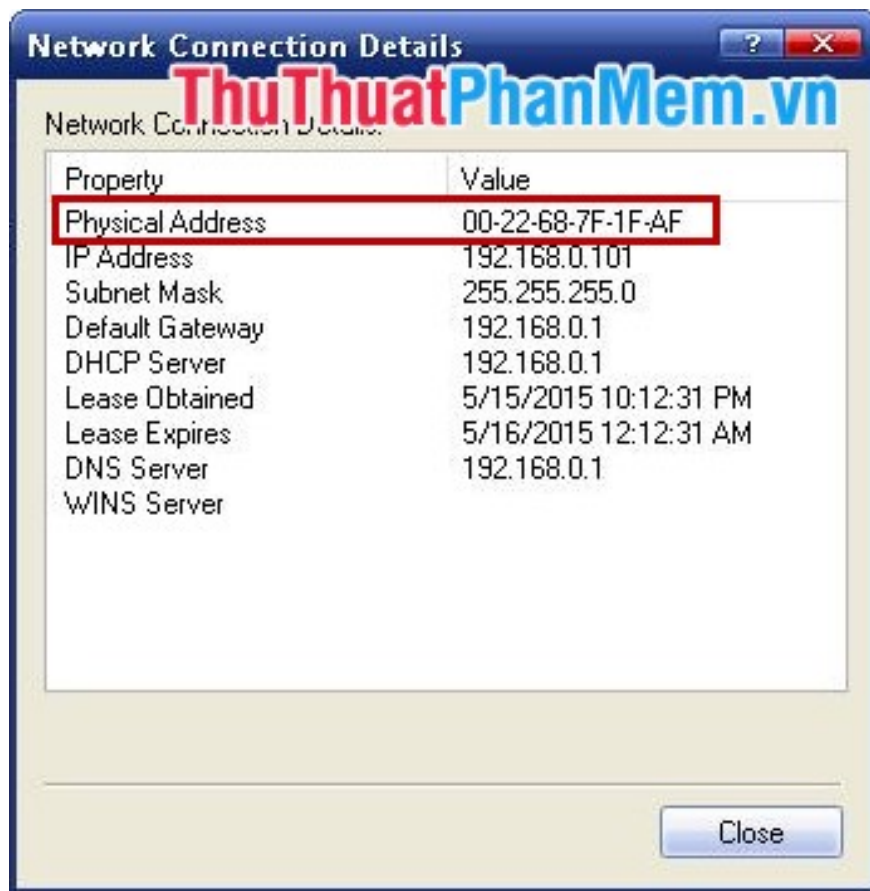
Step 3: **Network Connections** window appears, right-click **Local Area Connect** and select **Status** .



Step 4: In the **Local Area Connection Status** dialog box, select the **Support** tab and select **Details** .



Network Connection Details dialog box appears , the **Physical Address** line is the MAC address of the computer.

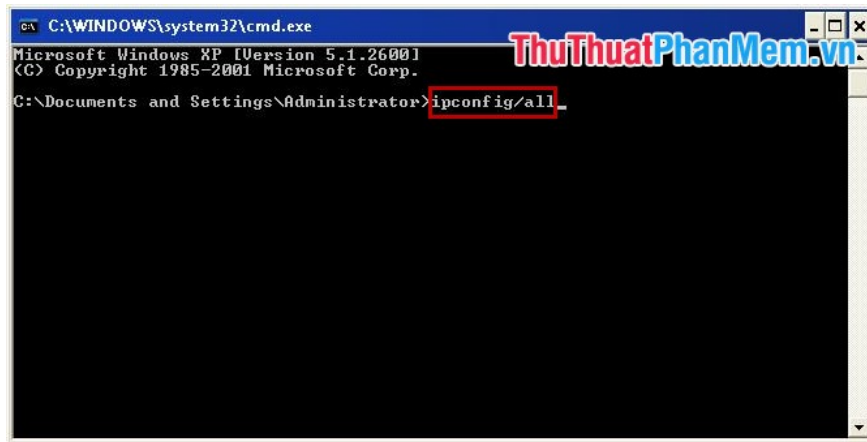


Method 2

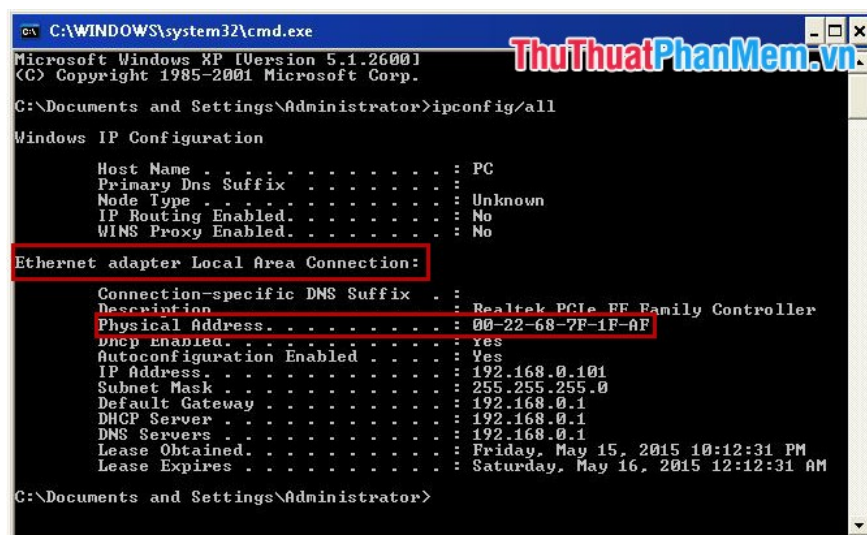
Step 1: You press **Windows + R** key combination to open the **Run** dialog box , then enter the keyword *cmd* and click **OK** to open the **cmd.exe** window .



Step 2: In the **cmd.exe** window, enter *ipconfig / all* and press **Enter** .



The network card of the computer is displayed and its MAC (**Physical Address**) address .

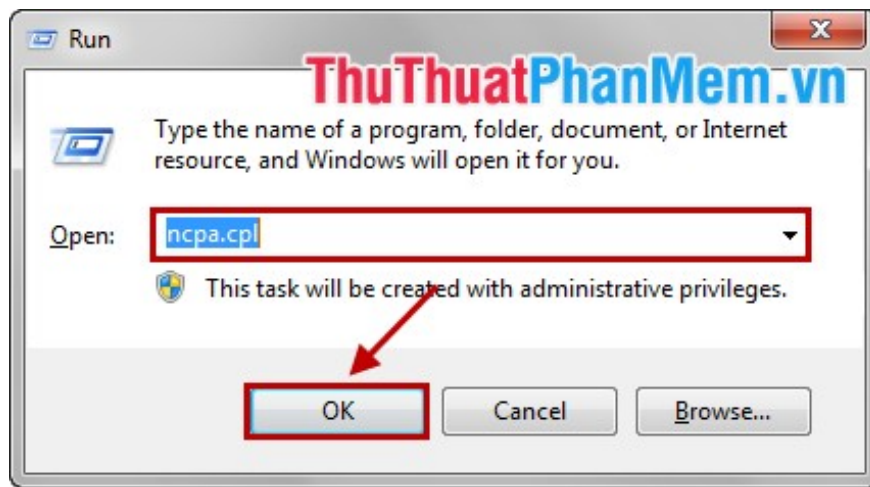


2. Windows 7, 8.

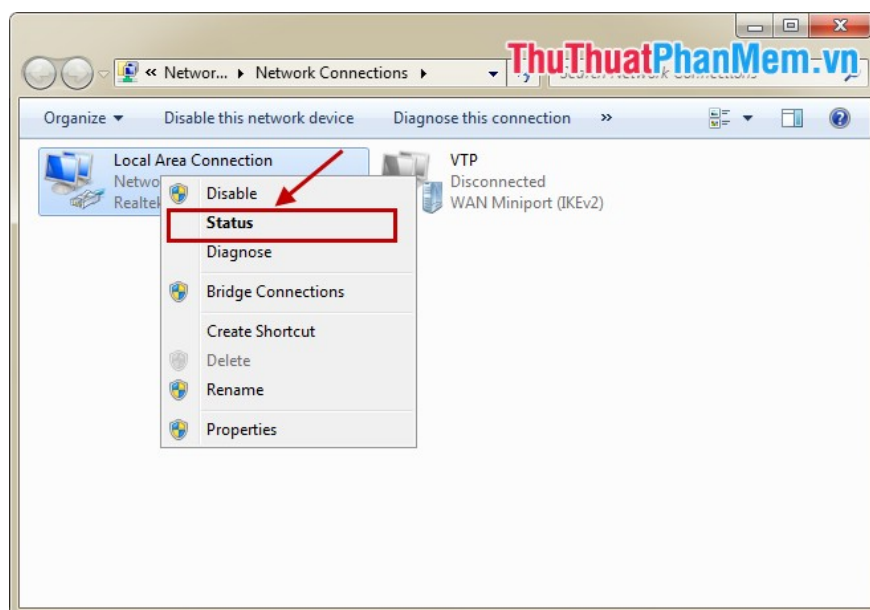
Method 1

Step 1: You press the **Windows + R** key combination to open the **Run** dialog box or you select **Start -> Run** .

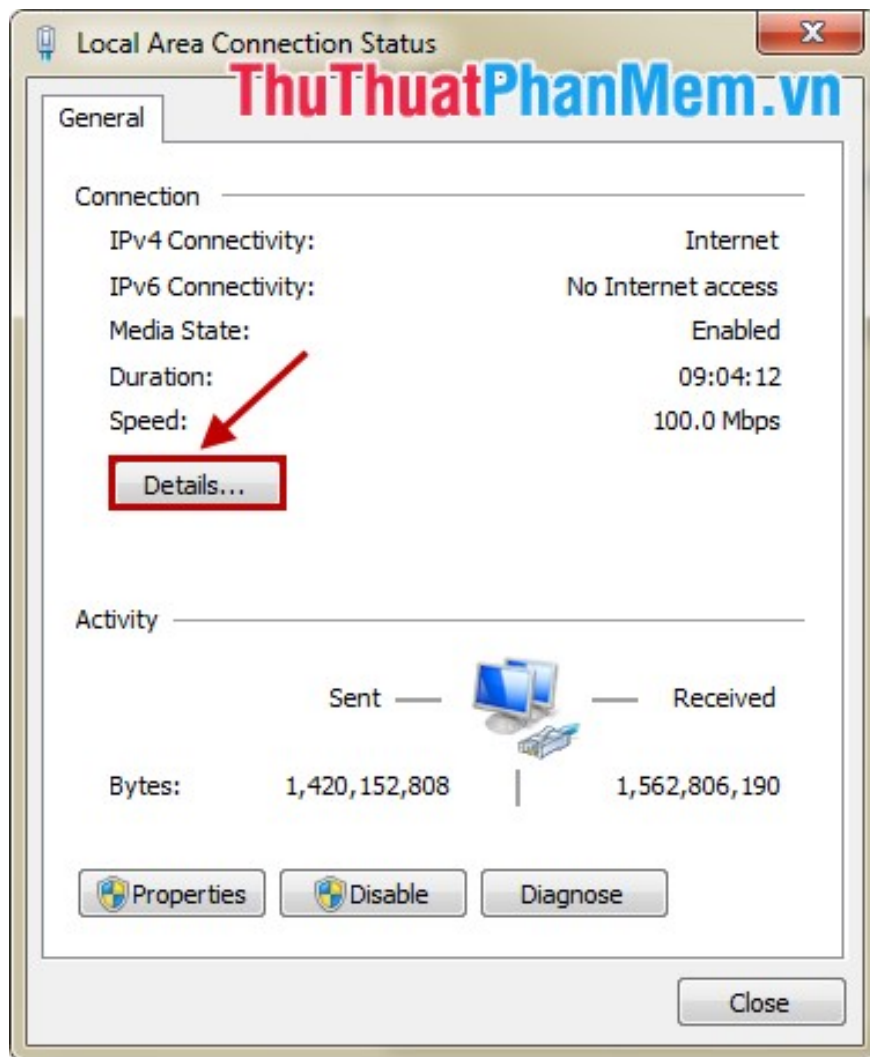
Step 2: In the **Run** dialog box, enter the keyword *ncpa.cpl* and press **OK** (or press the **Enter** key) .



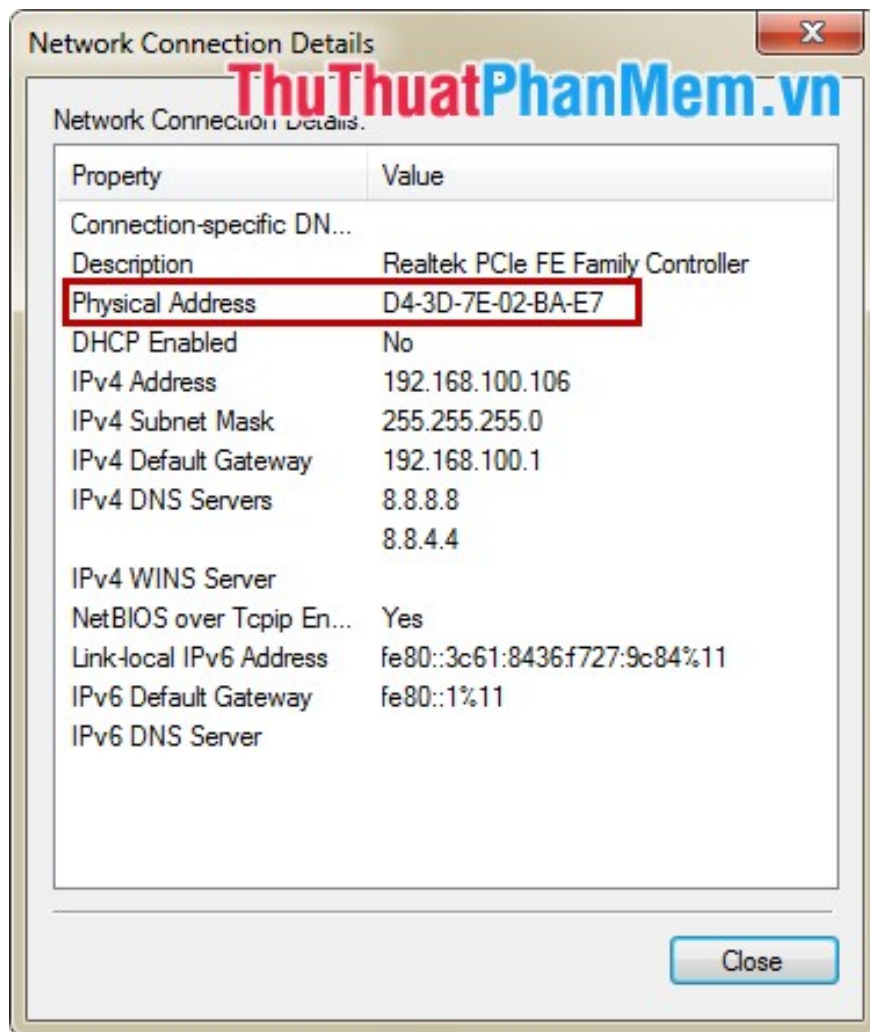
Step 3: Network Connections window appears, right-click **Local Area Connect** and select **Status** .



Step 4: In the **Local Area Connection Status** dialog box , select **Details** .



Step 5: In **Network Connection Details** , the **Physical Address** line is the computer's MAC address.



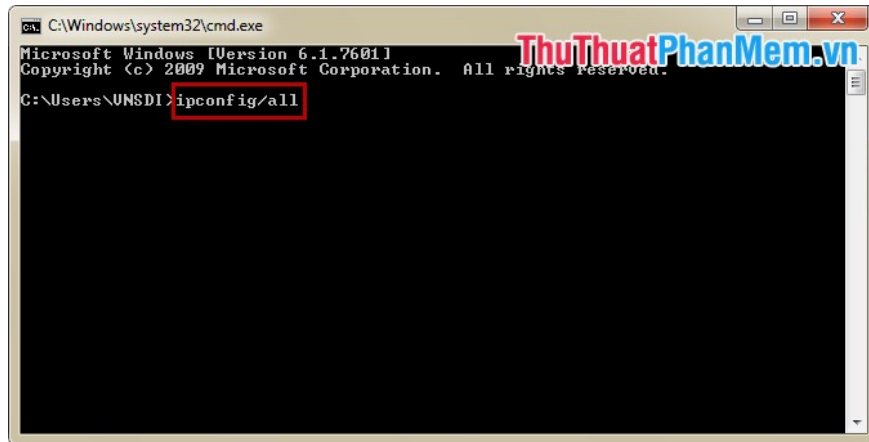
Method 2

Step 1: Press **Windows + R** combination to open the **Run** dialog box .

Step 2: In the **Run** dialog box enter the keyword **cmd** and click **OK** to open the **cmd.exe** window .



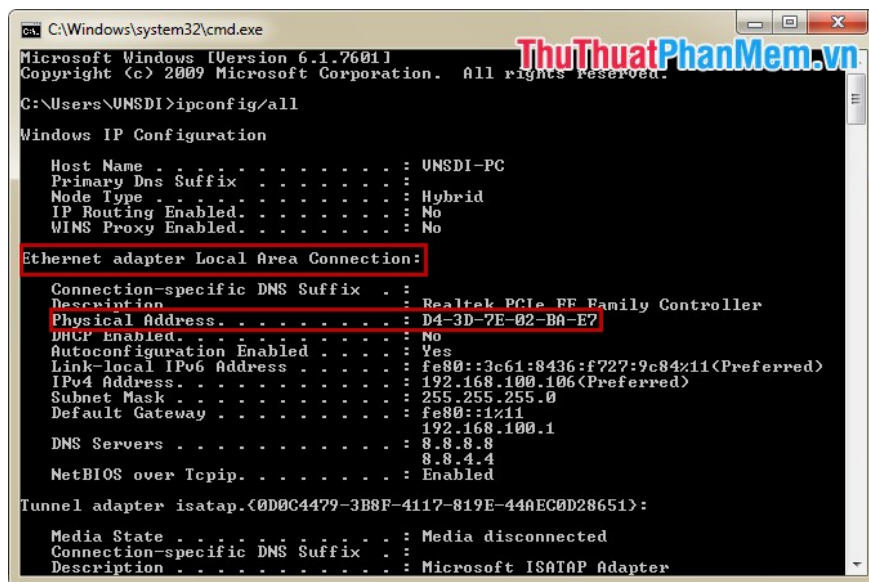
Step 3: In the `cmd.exe` window, enter `ipconfig /all` and press **Enter** .



```
C:\Windows\system32\cmd.exe
Microsoft Windows [Version 6.1.7601]
Copyright (c) 2009 Microsoft Corporation. All rights reserved.

C:\Users\UNSDI> ipconfig/all
```

The network card of the computer is displayed and its MAC address.



```
C:\Windows\system32\cmd.exe
Microsoft Windows [Version 6.1.7601]
Copyright (c) 2009 Microsoft Corporation. All rights reserved.

C:\Users\UNSDI> ipconfig/all

Windows IP Configuration

Host Name . . . . . : UNSDI-PC
Primary Dns Suffix . . . . . :
Node Type . . . . . : Hybrid
IP Routing Enabled. . . . . : No
WINS Proxy Enabled. . . . . : No

Ethernet adapter Local Area Connection:

Connection-specific DNS Suffix . :
Description . . . . . : Realtek PCIe FE Family Controller
Physical Address. . . . . : D4-3D-7E-02-BA-E7
DHCP Enabled. . . . . : No
Autoconfiguration Enabled . . . . : Yes
Link-local IPv6 Address . . . . . : fe80::3c61:8436:f727:9c84%11(Preferred)
IPv4 Address. . . . . : 192.168.100.106(Preferred)
Subnet Mask . . . . . : 255.255.255.0
Default Gateway . . . . . : fe80::1%11
                                192.168.100.1
DNS Servers . . . . . : 8.8.8.8
                                8.8.4.4
NetBIOS over Tcpip. . . . . : Enabled

Tunnel adapter isatap.{0D0C4479-3B8F-4117-819E-44AEC0D28651}:

Media State . . . . . : Media disconnected
Connection-specific DNS Suffix . :
Description . . . . . : Microsoft ISATAP Adapter
```

So with the very simple operation above, you quickly find the MAC address on your computer without the support of any software. Good luck!.

You finished reading the article "**How to find the MAC address - See the MAC address on Windows XP, Windows 7, 8**" edited by the [TipsMake](#) team. We hope this article has provided you with many useful tech tips and tricks. You can search for similar articles on tips and guides. Thank you for reading and for following us regularly.