

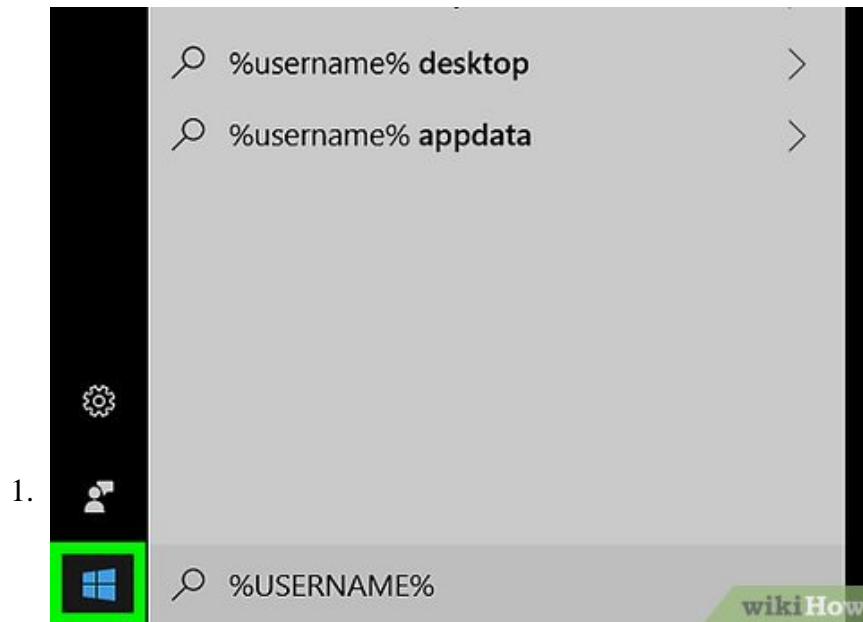
How to Find the Current User on Windows

This wikiHow teaches you how to see your current account's username on a Windows computer. Open your computer's Start menu. The Start menu button looks like four squares in the lower-left corner of your screen.

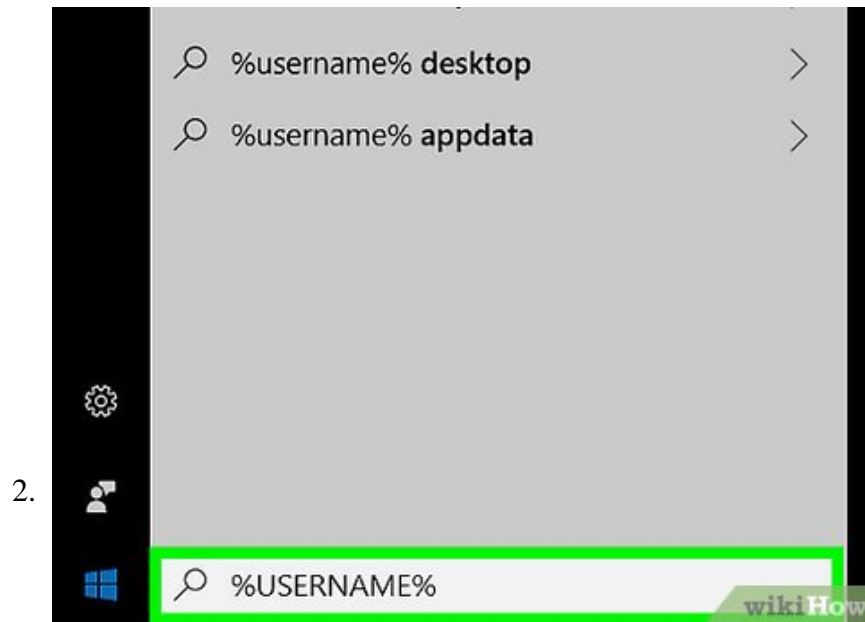
Steps

Method 1 of 2:

Using the Start Menu

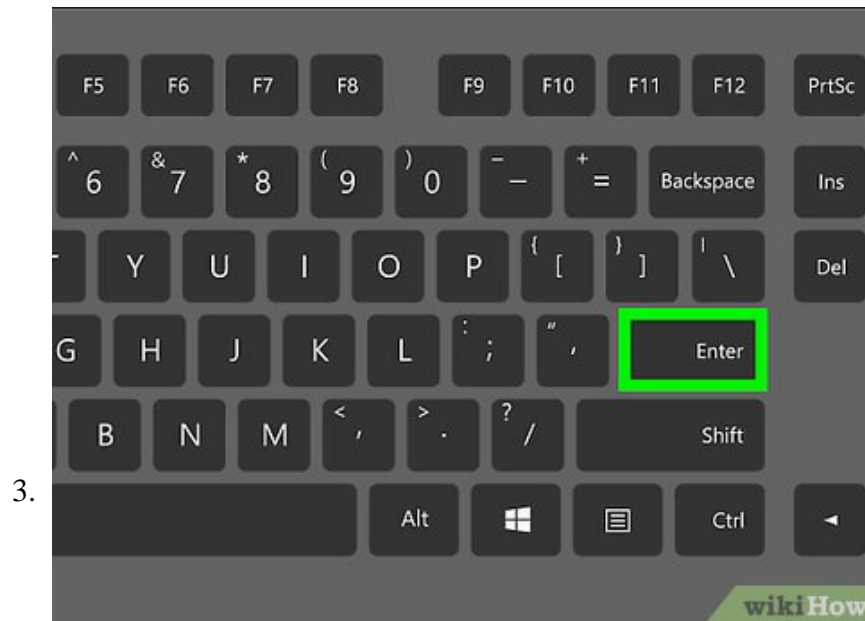


Open your computer's Start menu. The Start menu button looks like four squares in the lower-left corner of your screen.



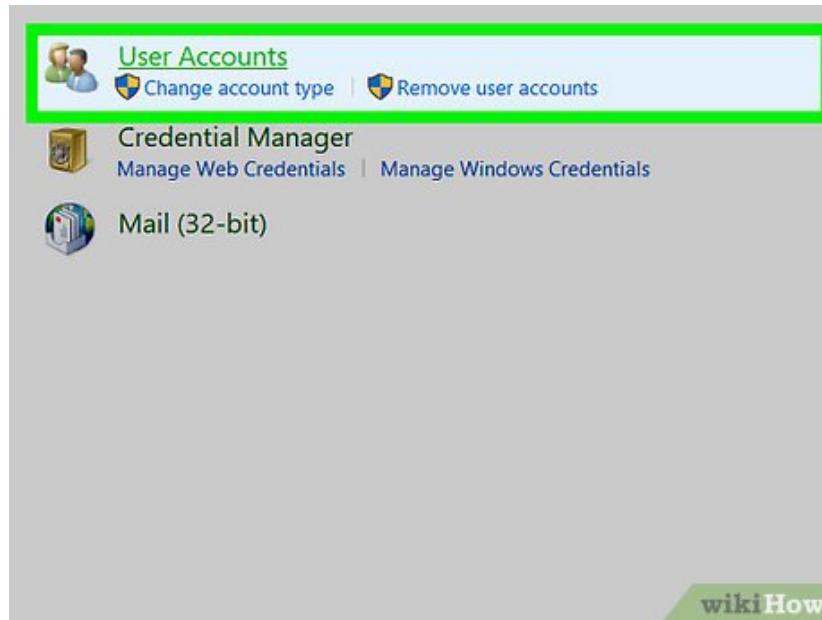
Enter %USERNAME% into the search box. Click the search box on the Start menu, and enter this line into it. This will search and find the User Accounts application from your Control Panel.

1. If %USERNAME% doesn't bring User Accounts in the search, try searching %ACCOUNT% .



Press ? Enter on your keyboard. This will open your User Accounts window.

4.

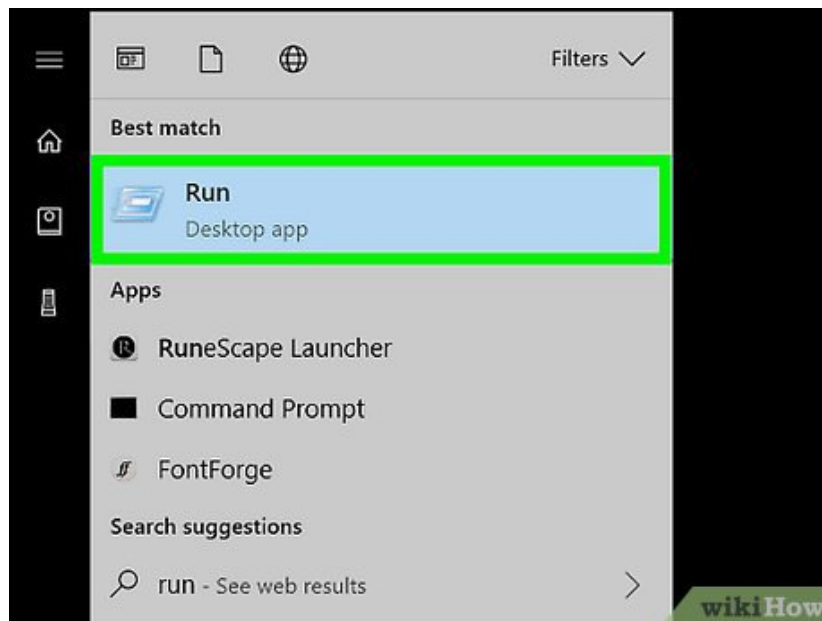


Find your username in the User Accounts window. Your current username is displayed in your User Accounts settings.

Method 2 of 2:

Using Command Prompt

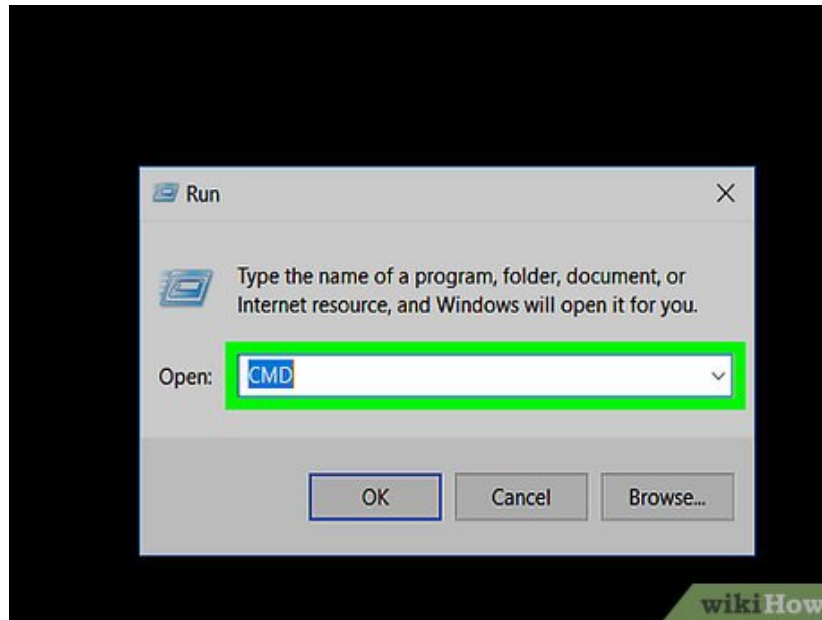
1.



Open the Run dialog box on your computer. The Run window allows you to directly open any application or document on your computer.

1. You can find and open **Run** from the Start menu, or press the **Win + R** shortcut on your keyboard.

2.



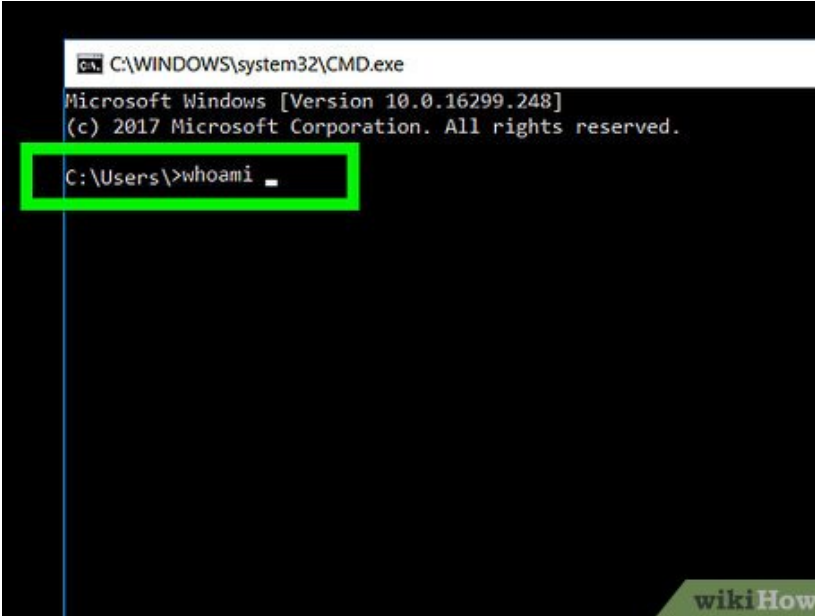
Type `cmd` into the Run window.

3.



Press `Enter` on your keyboard. This will open Command Prompt in a new window.

4.



```
C:\WINDOWS\system32\CMD.exe
Microsoft Windows [Version 10.0.16299.248]
(c) 2017 Microsoft Corporation. All rights reserved.
C:\Users\>whoami
```

The screenshot shows a Windows Command Prompt window with the title bar 'C:\WINDOWS\system32\CMD.exe'. The text inside the window reads: 'Microsoft Windows [Version 10.0.16299.248] (c) 2017 Microsoft Corporation. All rights reserved. C:\Users\>whoami'. The 'C:\Users\>whoami' line is highlighted with a green rectangular box. A 'wikiHow' logo is visible in the bottom right corner of the image.

Type **whoami** into Command Prompt. This command will reply with your username.

5.



Press **Enter** on your keyboard. Your current username will be displayed in a new line.

You finished reading the article "**How to Find the Current User on Windows**" edited by the [TipsMake](#) team. We hope this article has provided you with many useful tech tips and tricks. You can search for similar articles on tips and guides. Thank you for reading and for following us regularly.