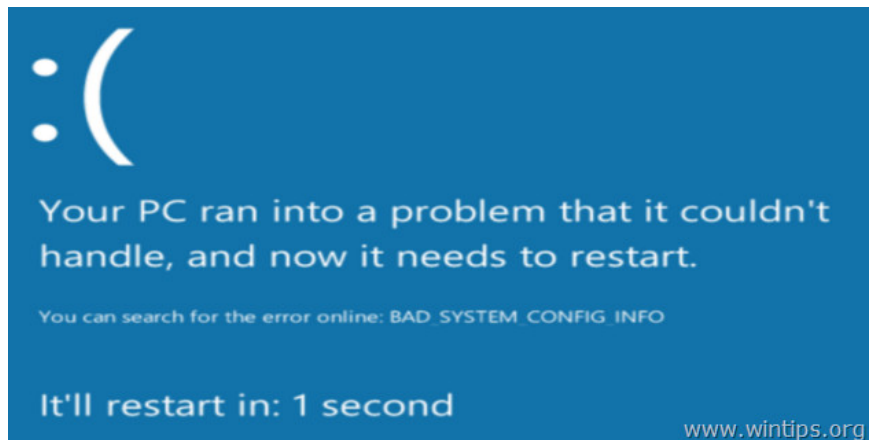
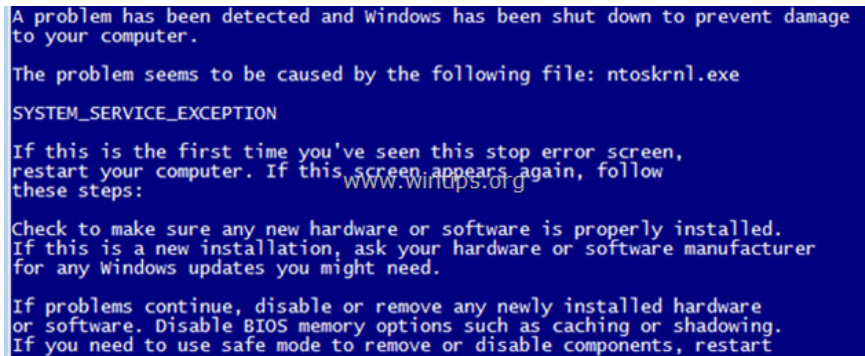


How to find the cause of blue screen death and Minidump errors?

When Windows crashes, a blue screen of death will appear on the screen - aka BSOD in a few seconds and then the computer will restart after a few days. The BSOD screen contains a short description of the STOP error and some general instructions to fix the crash.

When Windows crashes, the screen will display a blue screen of death - aka "BSOD" in seconds and then the computer will restart. The BSOD screen contains a short description of the STOP error and some general instructions to fix the crash.

At the same time when BSOD happens, Windows creates a small dump file (aka "minidump"), in the " C: WindowsMinidump " folder that contains some details about the BSOD error and some solutions to support user carving. recover BSOD errors. In the following article, Network Administrator will show you how to find detailed instructions to find out the cause of Windows crashes.



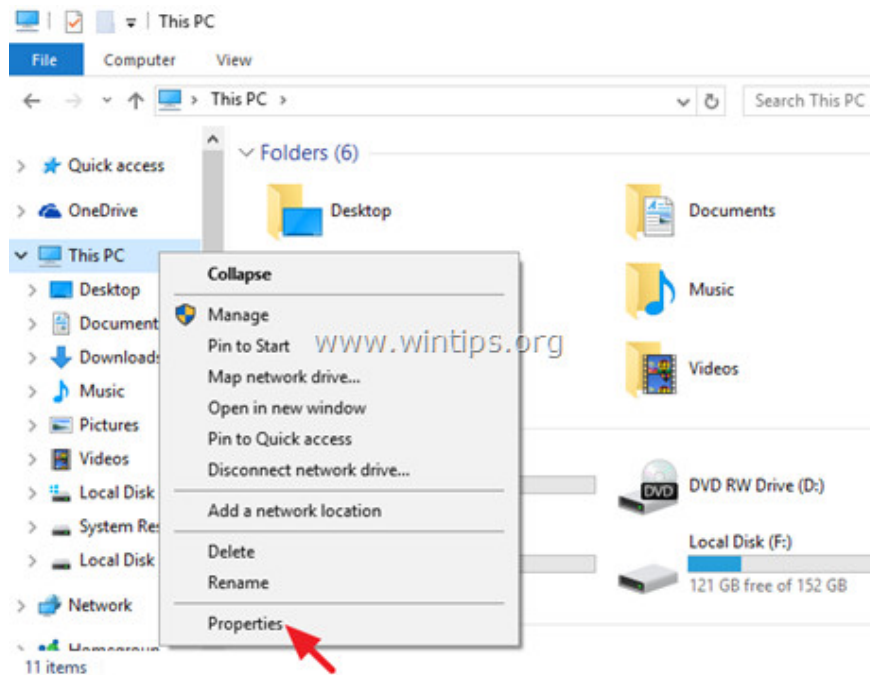
1. Find the cause of the dead blue screen error on the BSOD screen

To find the cause of the BSOD error, you can check the details of the system error hanging from the blue screen of death (Blue Screen Of Death) or analyze the BSOD Minidump file.

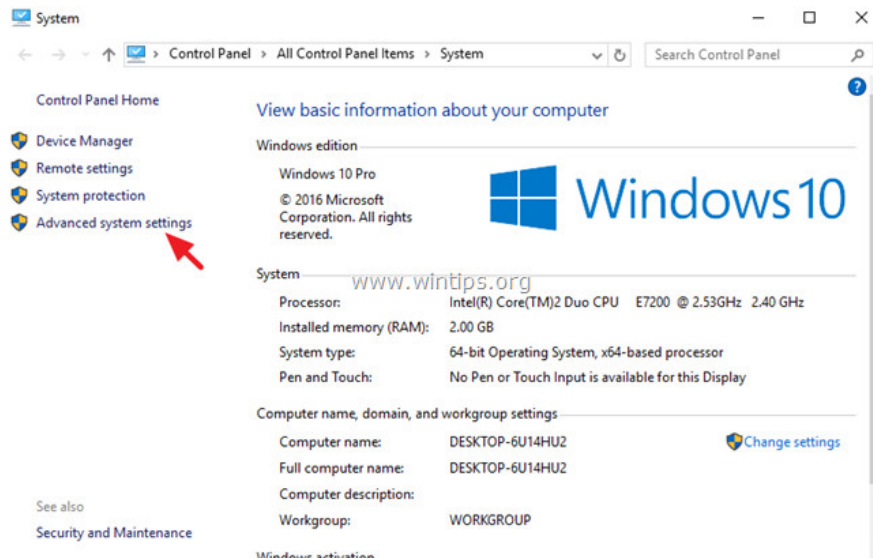
Step 1: Prevent Windows from automatically restarting after BSOD crashes

The first step is to prevent Windows from automatically starting up when the system crashes to allow enough time to finish reading the BSOD error message displayed on the screen. To disable Automatic Restart:

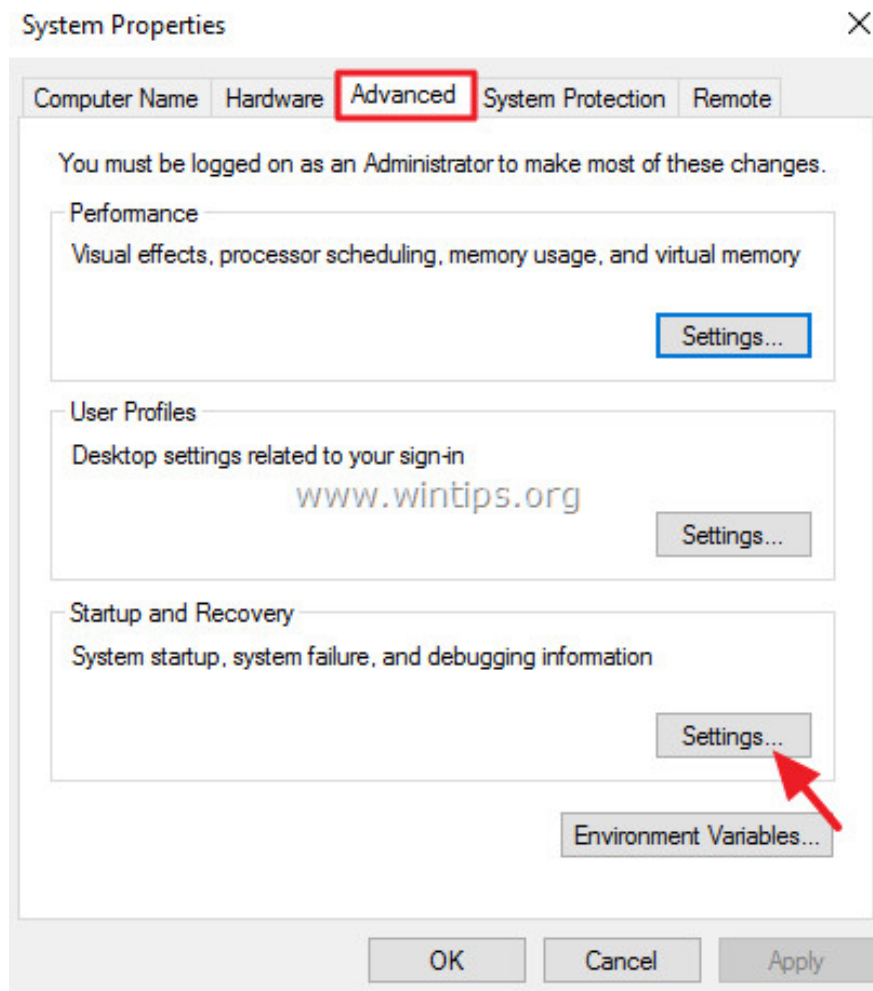
1. Open Windows Explorer and in the left pane right-click the **Computer (This PC)** icon and select **Properties** .



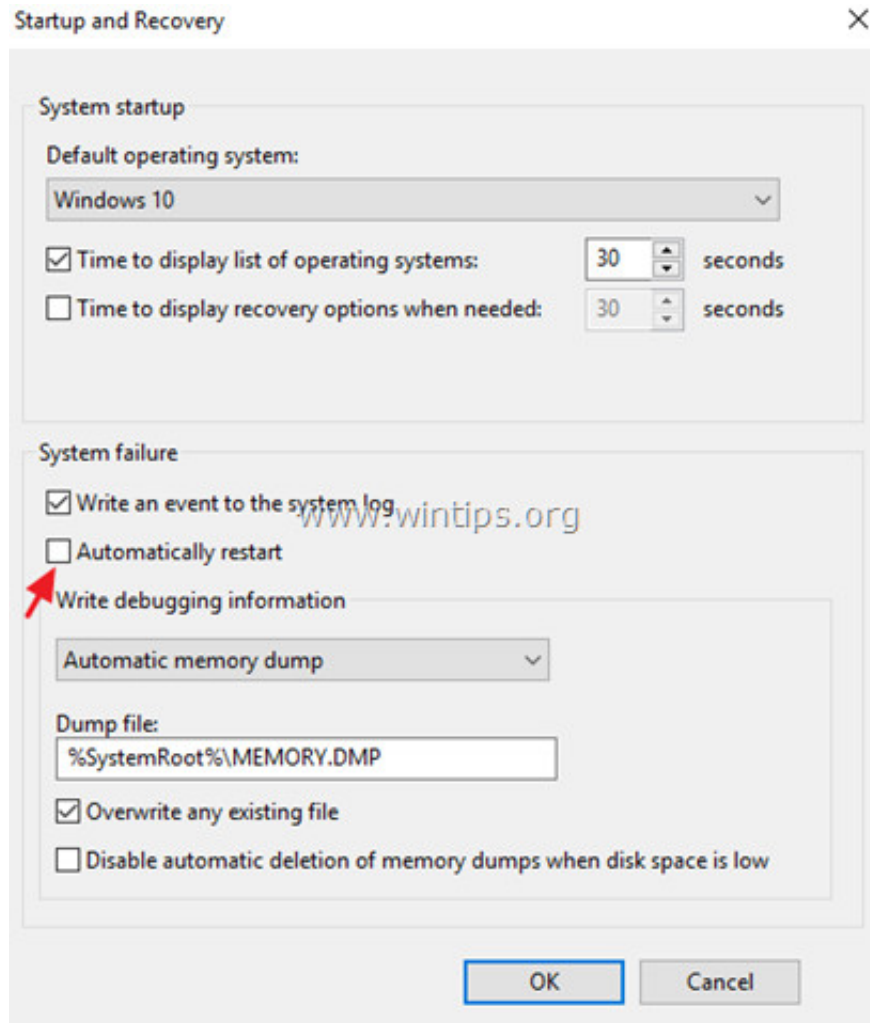
2. Select **Advanced system settings** .



3. Open **Startup and Recovery settings** .



4. **Uncheck Automatically restart** then click **OK** .



Step 2: Check for dead blue screen errors

After disabling the "Automatically Restart" feature, you will have enough time to read the details of the dead blue screen error message when the system crashes.

How to find the cause of a system error hanging from the blue screen of death?

- On Windows 7 or Windows Vista:

The most important information on the blue screen of death is near the top and contains errors with application files or drivers that cause BSOD errors (if any).

Eg:

Nếu bạn có tệp tin d??i ??y, tệp tin mà không có l?i BSOD Problem là " *ntoskrnl.exe* " and the thông báo l?i " *IRQL_NOT_LESS_OR_EQUAL* "

Other useful information is located near the bottom of the BSOD screen and contains the number of STOP ((aka "Bug Check Code") errors on the " *0x* " form and then the quotation marks containing the error parameters.

For example :

T?p tin mã s? này không ph?i là " 0x0000000a "

{Blue Screen Of Death (sample) in Windows 7 or Windows Vista}

```
A problem has been detected and windows has been shut down to prevent damage
to your computer.

The problem seems to be caused by the following file: ntoskrnl.exe
IRQL_NOT_LESS_OR_EQUAL

If this is the first time you've seen this stop error screen,
restart your computer. If this screen appears again, follow
these steps:

Check to make sure any new hardware or software is properly installed.
If this is a new installation, ask your hardware or software manufacturer
for any Windows updates you might need.
www.wintips.org

If problems continue, disable or remove any newly installed hardware
or software. Disable BIOS memory options such as caching or shadowing.
If you need to use safe mode to remove or disable components, restart
your computer, press F8 to select Advanced Startup Options, and then
select Safe Mode.

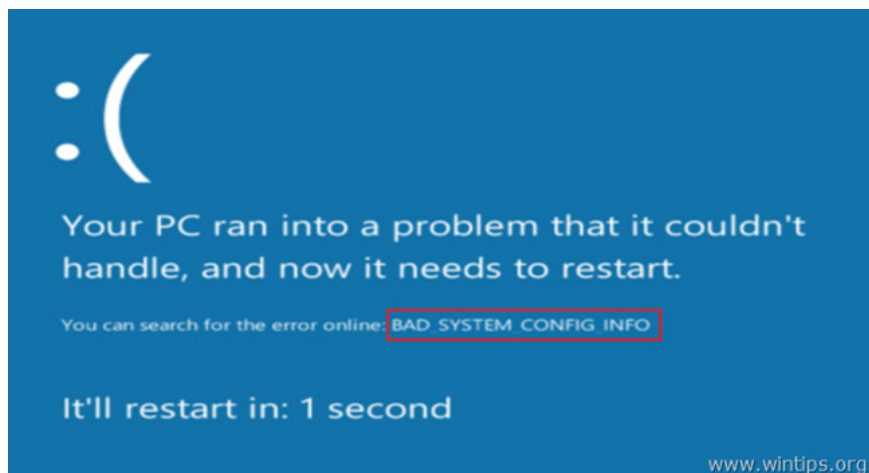
Technical Information:
*** STOP: 0x0000000a (0x000000000039b200, 0x0000000000000002, 0x0000000000000000,
0xfffff80003ad2961)
*** ntoskrnl.exe - Address 0xfffff80003acac40 base at 0xfffff80003a55000 DateStamp
0x50e79935
```

After reading and finding errors on the BSOD screen, you can search on Google to find solutions to fix BSOD errors.

For example, searching the network " *ntoskrnl.exe IRQL_NOT_LESS_OR_EQUAL* " or "*IRQL_NOT_LESS_OR_EQUAL 0x0000000a* ", .

- On Windows 10, 8.1 and 8:

Blue screens of death on Windows 10 and Windows 8 have more new points. The BSOD screen only contains a hang error (marked with a red frame icon as shown below) and only advice on finding errors online.



2. Fix the dead blue screen error from Memory Dump - Minidump file

The second method to find out the cause of BSOD Crash error is to read the details stored on BSOD Minidump files.

To view minidump file information, you can use NirSoft's BlueScreenView (Blue Screen Viewer) utility, which will scan all minidump files created during the 'blue screen of death' process and display details. All errors are suspended in 1 table.

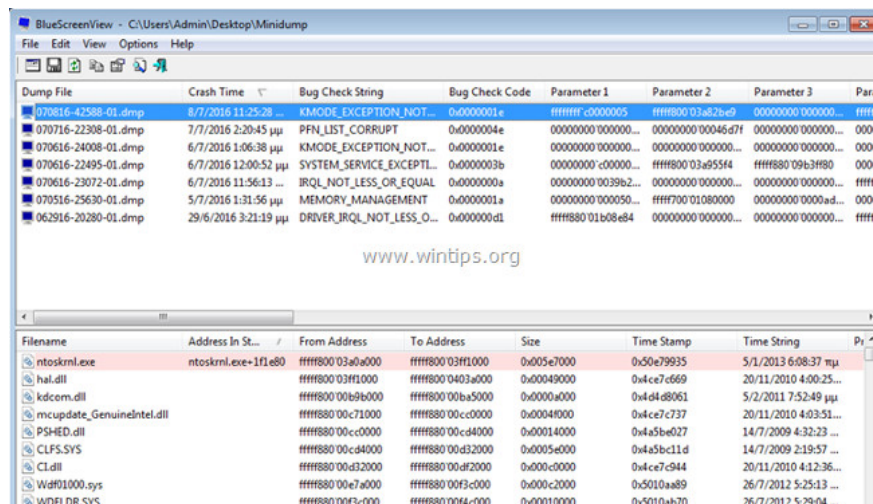
How to find out the cause of System Crash error from BSOD Minidumb files?

1. Download the free BlueScreenView utility in accordance with the version of the operating system you use (32 or 64 bit).

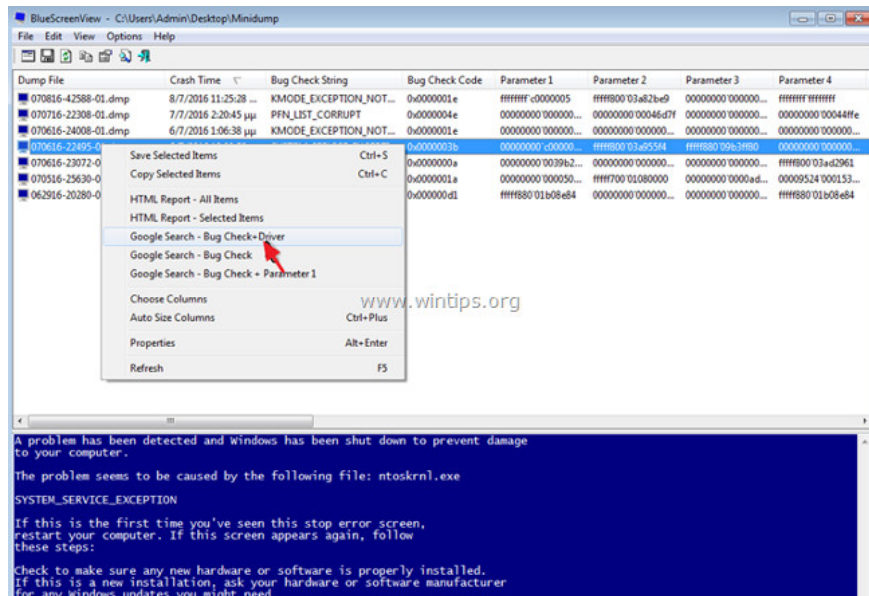
1. Download the BlueScreenView utility for free for the 32-bit version here.
2. Download the free BlueScreenView utility for the 64-bit version here.

2. Open BlueScreenView and the program will automatically search and analyze the minidump file created during the BSOD process.

1. At the top of the section, BlueScreenView utility, you will see a list of minidump files created during the system crash, displayed by date / time, and display the Stop Error error message on the blue screen of death. driver or module details are the cause of the error.
2. At the bottom of the utility panel BlueScreenView displays applications or drivers or modules that may be causing the crash, so **you should pay attention** .

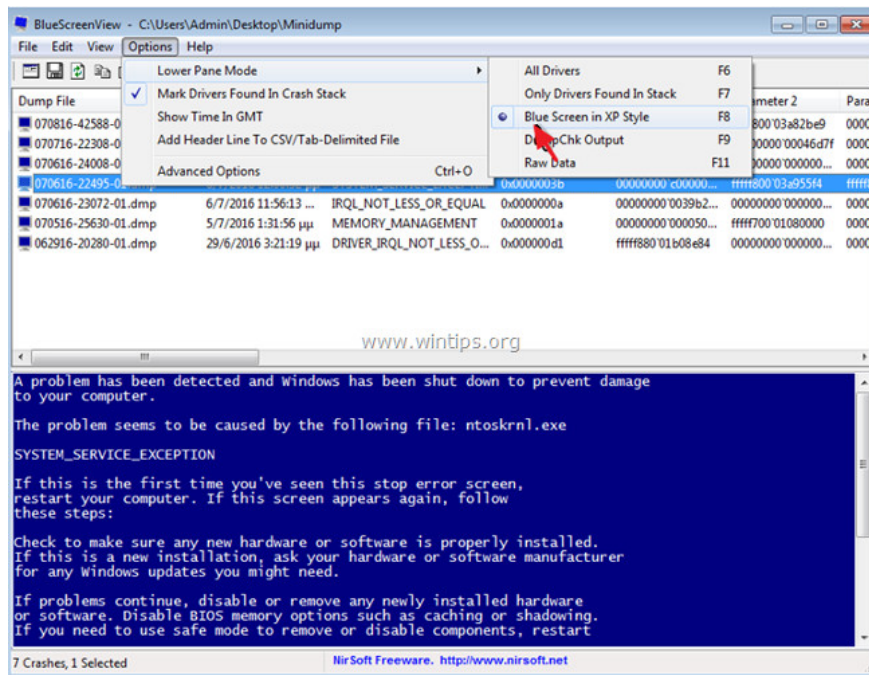


3. Right-click any line and select " Google Search - Bug Check + Driver " or " Google Search - Bug Check " or " Google Search - Bug Check + Parameter 1 " to search for solutions to fix BSOD error online.

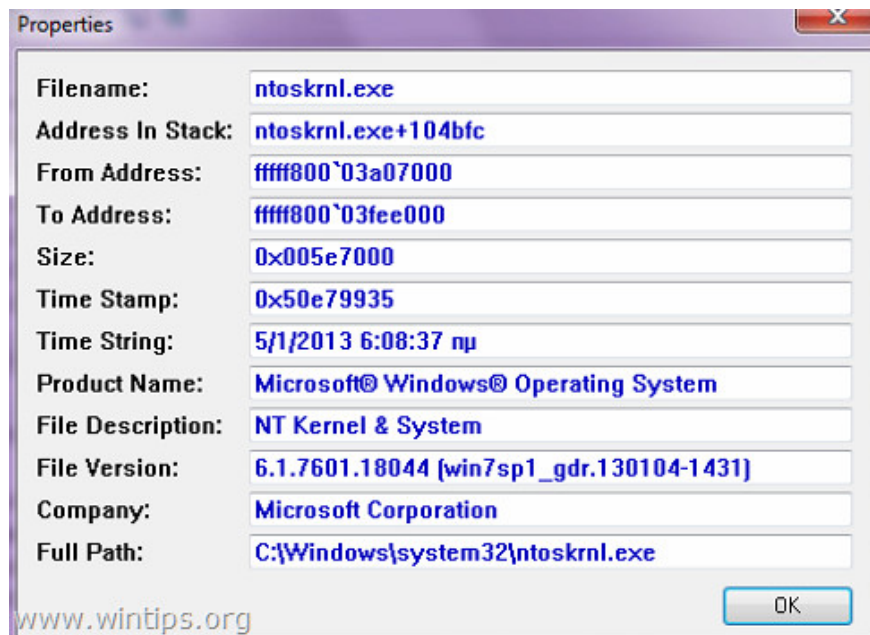


Add useful features BlueScreenView

1. BlueScreenView gives you the ability to view the blue screen of death displayed by Windows during the BIOS crash. To do this, access the **Options** menu from the main **menu** and select **Lower Pane Mode => Blue Screen in XP Style** .

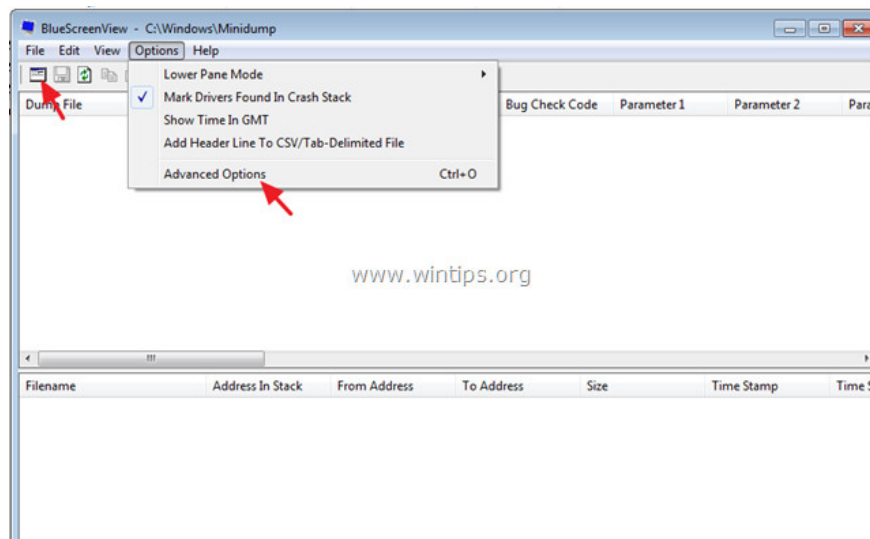


2. Double-click on any line (in the top or bottom corner of the table) to see the BSOD issue details.

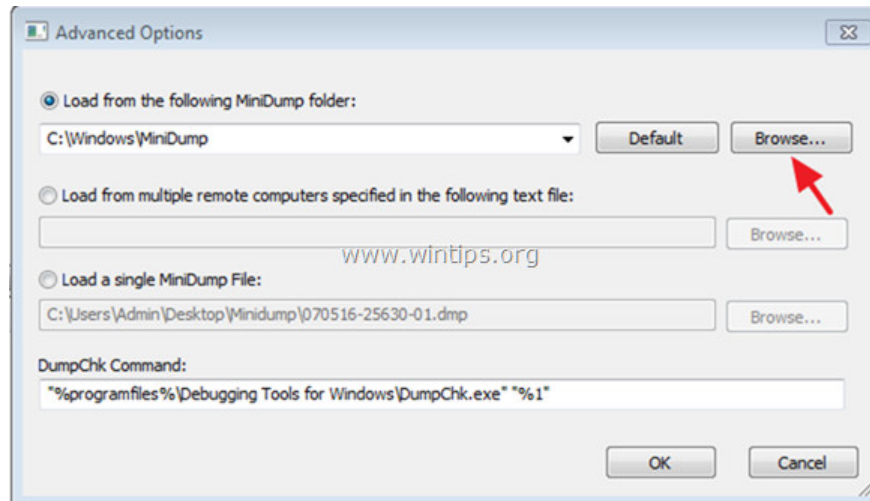


3. If the system crash fails to load Windows, you can convert the Minidump folder (C:\Windows\Minidump) to another folder to operate on your computer and check the minidump files here. To do this thing:

1. Select the **Advanced Options** icon located in the File menu or go to **Options => Advanced options** .



2. Then click **Browse** to search for the minidump file to convert to the Minidump folder.



Refer to some of the following articles:

1. Display BIOS information on Windows 10 using Command Prompt
1. Instructions for setting up BIOS and UEFI passwords to protect data on your Windows 10 computer safely
1. How do I know if someone has accessed and used your computer?

Good luck!

You finished reading the article "**How to find the cause of blue screen death and Minidump errors?**" edited by the [TipsMake](#) team. We hope this article has provided you with many useful tech tips and tricks. You can search for similar articles on tips and guides. Thank you for reading and for following us regularly.