

How to find hardware drivers that Windows cannot recognize

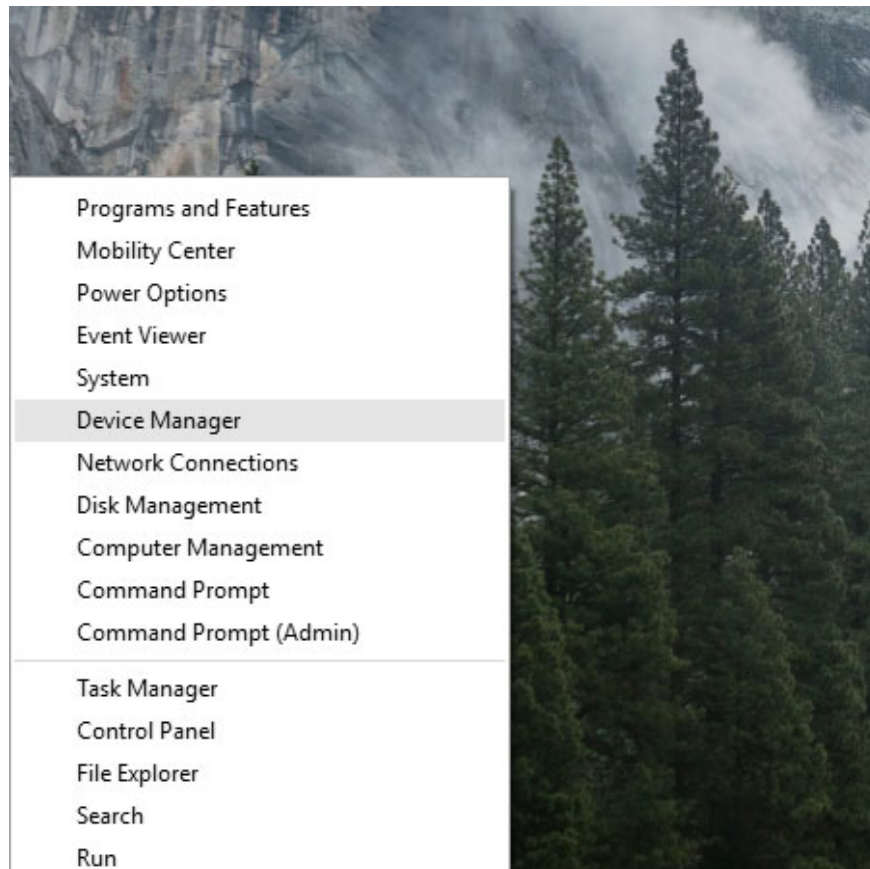
In case you do not have driver packages available, Windows will automatically recognize and download via Windows Update. Or users can visit the manufacturer's website to download. However, if these two ways still do not bring good results, you can refer to this simple suggestion below

Driver is the basic data for Windows to identify hardware devices, as well as help Windows to exploit the power and features from them. Hardware manufacturers also provide driver packages so that Windows can identify when connecting devices to computers.

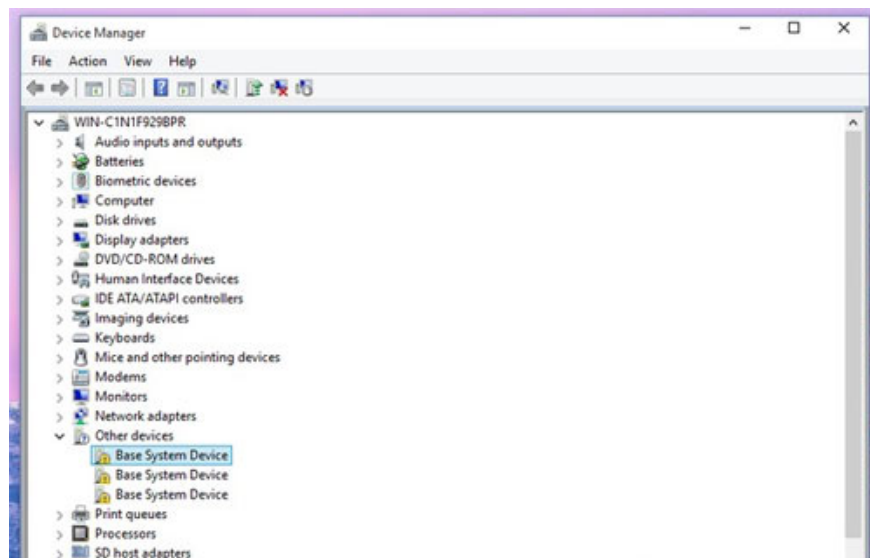


In case you do not have driver packages available, Windows will automatically recognize and download via Windows Update. Or users can visit the manufacturer's website to download. However, if these two ways still do not bring good results, you can refer to this simple suggestion below.

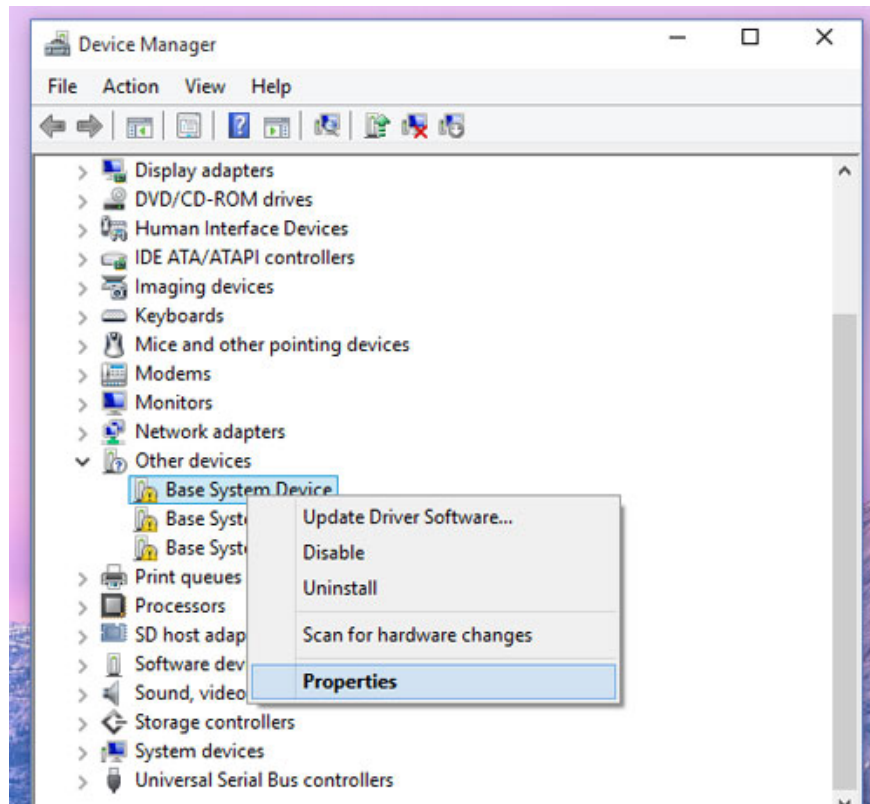
First, access the Windows device management feature by pressing the **WIN + X** key combination and clicking the Device Manager option. If you are using **Windows 7** or Vista, you can search for Device Manager from the Start menu.



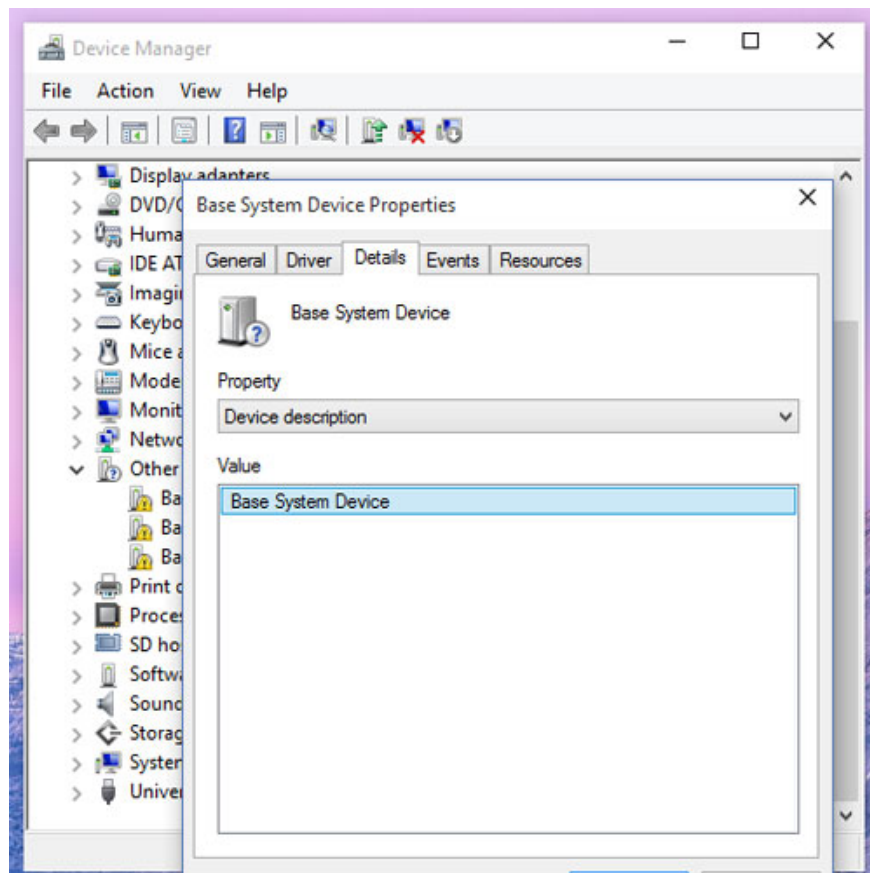
The Device Manager dialog box appears. Find the device group named ' *Other devices* '. This is usually a group of hardware devices that have not been recognized by Windows because there is no driver.



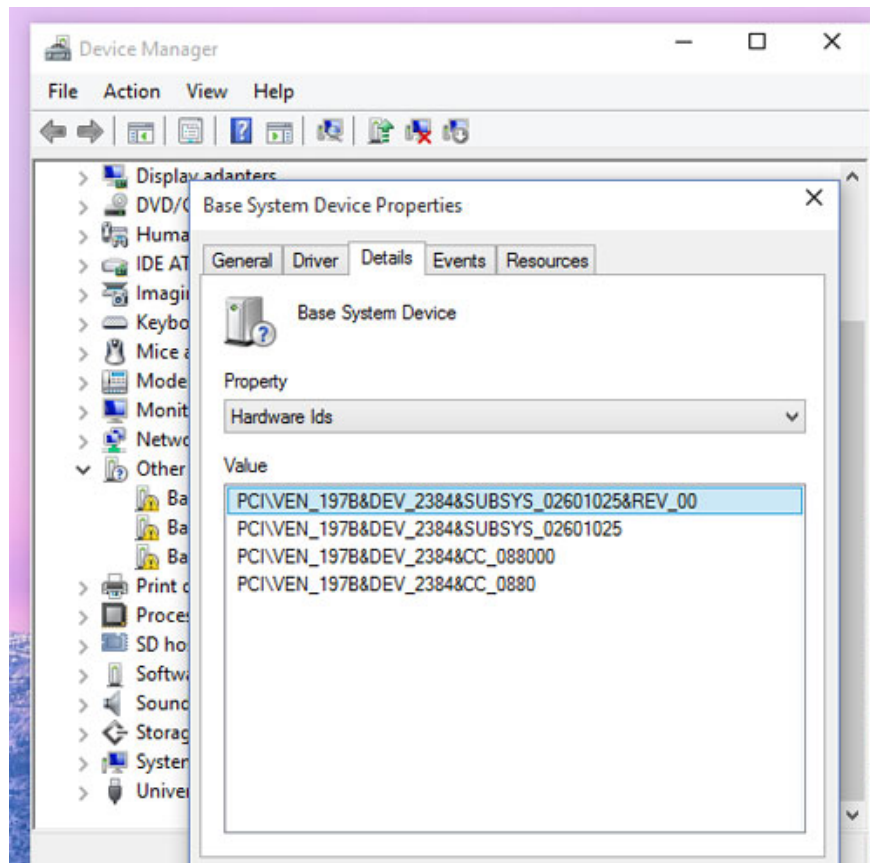
Now right-click on the unknown device name and select the Properties command.



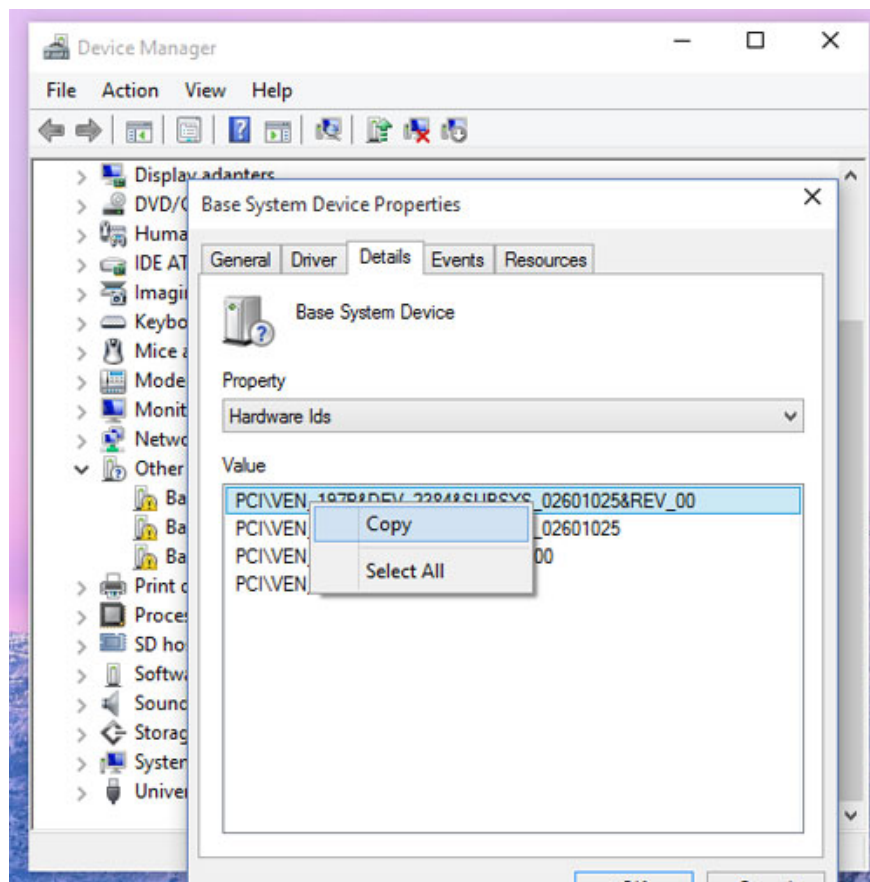
The Properties dialog box appears, select the Details tab and see the Device description line by default.



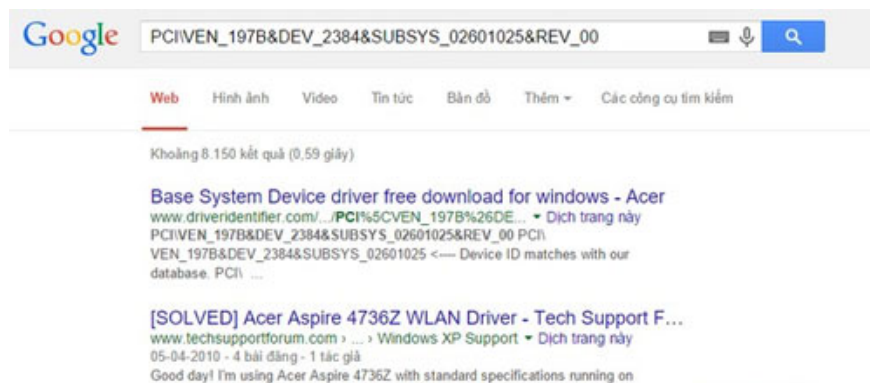
Now click on the Property menu and select Hardware Ids from the list. You will then see some nonsense characters appear below, in fact these are the device's unique identifier information.



Next, right click on an arbitrary line and select Copy. Then click OK to close the Properties window.



Your remaining job now is to open the web browser, visit the Google search page and paste the above copied code in, then press ENTER.



In the results displayed, determine yourself the most reliable and most appreciated address to download the driver package you are looking for. Finally, the installation is simple.

This is the easiest way for you to find and download drivers for hardware that Windows cannot recognize in Device Manager. Hope the article will be useful for you.

You finished reading the article "**How to find hardware drivers that Windows cannot recognize**" edited by the [TipsMake](#) team. We hope this article has provided you with many useful tech tips and tricks. You can search for similar articles on tips and guides. Thank you for reading and for following us regularly.
