

How to filter duplicate data on 2 Excel sheets

To filter duplicate data from 2 sheets in Excel, you can use the Vlookup function.

In basic Excel functions, Vlookup function is also used frequently. Vlookup function belongs to the function of searching data on Excel and we can combine functions with many other functions to process data, such as Vlookup function with If function, Vlookup function with Left function, using Vlookup function to combine 2 tables, .

In this article, Network Administrator will introduce how to use Vlookup function to filter duplicate data from 2 different sheets. Filtering duplicate data on Excel in a single sheet is relatively simple, just use the available filtering feature. But if 2 or more sheets, users can use Vlookup function.

1. How to automatically display names when entering code in Excel
2. How to combine Sumif and Vlookup functions in Excel
3. How to use AVERAGEIF function in Excel

1. Use Vlookup function to filter Excel duplicate data

We will have 2 data tables below. In **Sheet 1** will be the name column to filter duplicate data and Sheet 2 is the main data.

	A	B	C	D	E	F
1						
2			Họ và tên	Kiểm tra		
3			Lê Anh Đức			
4			Phạm Thu Hà			
5			Trần Tuấn Minh			
6			Nguyễn Vy Oanh			
7			Phùng Đức Trí			
8			Bùi Hà My			
9			Nguyễn Minh Đức			
10						
11						
12						
13						

Sheet 2 has the data sheet as shown below.

	B	C	D	E	F	G	H
1							
2		Họ và tên	Lớp	Tổng điểm			
3		Lê Anh Đức	A1	22,5			
4		Lý Bảo Minh	B3	15,1			
5		Bùi Hà My	D1	27,6			
6		Nguyễn Trung Nghĩa	A2	20			
7		Hồ Thu Hà	C1	11,75			
8		Trần Tuấn Minh	B1	28			
9		Trần Thực Anh	A2	19			
10		Phùng Thu Cúc	C2	25,2			
11		Phạm Anh Khoa	D2	19,75			
12							
13							
14							

Step 1:

In Sheet 1 in the first cell enter the same result, click on the **Formulas** tab and select **Insert Function** .

Book1 - Microsoft Excel

File Home Insert Page Layout Formulas Data Review View Developer

fx Insert Function

AutoSum Recently Used Financial Logical Text Date & Time

Name Manager

Define Name Use in Formula Create from Selection

Trace Precedents Trace Dependents Remove Arrows

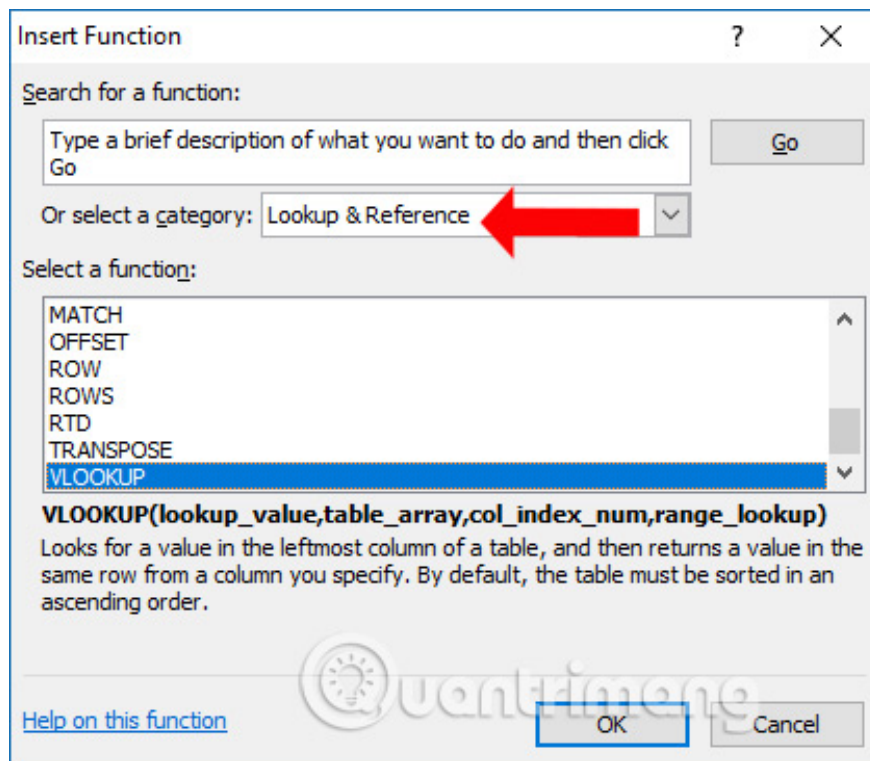
Formula Au

	A	B	C	D	E	F
1						
2			Họ và tên	Kiểm tra		
3			Trần Tuấn Minh			
4			Phạm Thu Hà			
5			Lê Anh Đức			
6			Nguyễn Vy Oanh			
7			Phùng Đức Trí			

Step 2:

The Insert Function dialog box appears. In the **Or select a category section**, you will find the **Lookup & Reference** group because Vlookup function belongs to the search function group.

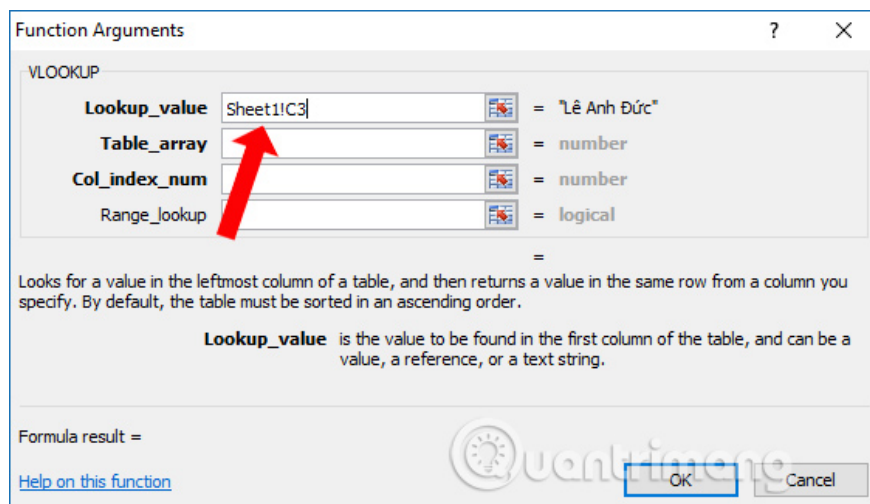
Scroll down to the bottom of the list and see **the VLOOKUP function** , click OK.



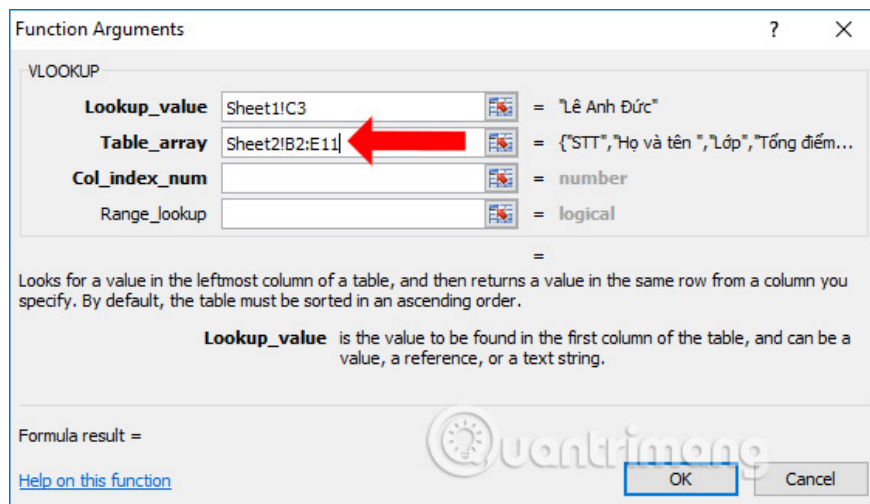
Step 3:

Next to display the Function Arguments dialog box. Here the user will enter data areas for each element. **Lookup_value** section, click on **Sheet 1** and then click on **cell C3** . Box C3 is the first box containing the name in Sheet 1.

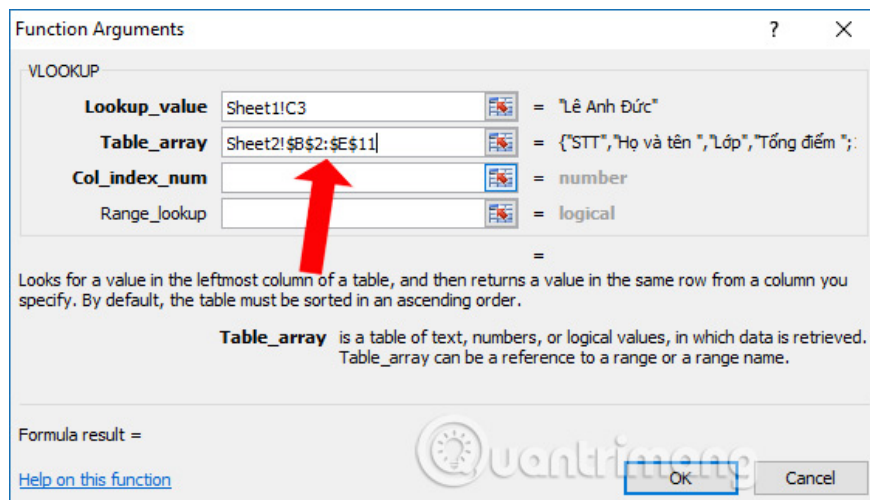
Then the Lookup_value box will appear **Sheet1! C3** .



At **Table_array** click on Sheet 2 and select the entire area of ??the data to be checked for the same. At Table_array, **Sheet2** will appear ! **C2: E11** with C2: E11 is the data area.

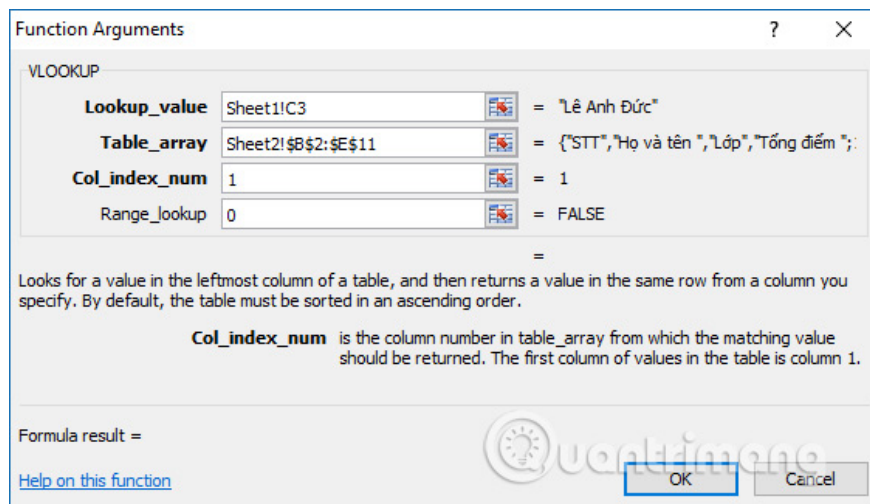


Readers need to note that if they want to check a lot of data, they need to fix the selection by clicking on the middle or the end of C2 and pressing F4, similar to E11 to be fixed. Now Table_array will be **Sheet2! \$ C \$ 2: \$ E \$ 11** as shown below.



In **Col_index_num**, enter the position of the column you want to return data if it is the same. For example, the column of data that you want to check will be in the first column, so enter 1.

Range_lookup you enter 0 for the search function to be exact. Finally click OK.



Step 4:

The final result will show the name of the duplicated person.

	A	B	C	D	E	F
1						
2			Họ và tên	Kiểm tra		
3			Lê Anh Đức	Lê Anh Đức		
4			Phạm Thu Hà			
5			Trần Tuấn Minh			
6			Nguyễn Vy Oanh			
7			Phùng Đức Trí			
8			Bùi Hà My			
9			Nguyễn Minh Đức			
10						
11						
12						
13						

Continue dragging the data in the first cell to the remaining cells. Since the area has been fixed, the function will not be roamed when copying the function formula. For cells that do not have the same data will return the # N / A error.

	A	B	C	D	E	F
1						
2			Họ và tên	Kiểm tra		
3			Lê Anh Đức	Lê Anh Đức		
4			Phạm Thu Hà	#N/A		
5			Trần Tuấn Minh	Trần Tuấn Minh		
6			Nguyễn Vy Oanh	#N/A		
7			Phùng Đức Trí	#N/A		
8			Bùi Hà My	Bùi Hà My		
9			Nguyễn Minh Đức	#N/A		
10						
11						
12						

Step 5:

So we know in detail how to enter the Vlookup formula with each element in the recipe. To shorten the way, enter the formula like below.

1. = VLOOKUP (Sheet1! C3, Sheet2! \$ C \$ 2: \$ E \$ 11,1,0)

	A	B	C	D	E	F
1						
2			Họ và tên	Kiểm tra		
3			=VLOOKUP(Sheet1!C3,Sheet2!\$C\$2:\$E\$11,1,0)			
4			Phạm Thu Hà			
5			Trần Tuấn Minh			
6			Nguyễn Vy Oanh			
7			Phùng Đức Trí			
8			Bùi Hà My			
9			Nguyễn Minh Đức			
10						
11						
12						

Inside:

1. Sheet1! C3 is cell C3 in Sheet 1, it is necessary to check the duplicate data.
2. Sheet2! \$ C \$ 2: \$ E \$ 11 is the same data area to check in Sheet 2.
3. 1 is the column where you want the look function to return in the data area to be checked.
4. 0 is the exact search type of Vlookup function.

2. Combining Vlook function, If function, ISNA function removes # N / A error

In the data check column for those cells that are not duplicated, the # N / A error will be displayed. If so, it can be combined with ISNA function to help you check the data # N / A. If the data is # N / A, the ISNA function will return TRUE, otherwise the function will return FALSE.

If the function checks the condition, it returns the value you specified, if it is false, returns the b value that the user specifies.

Step 1:

At Sheet 1 you enter 1 more column to compare with the Check column. In the first box you will enter the formula below.

1. = IF (ISNA (VLOOKUP (Sheet1! C3, Sheet2! \$ C \$ 2: \$ E \$ 11,1,0)), "No", "Duplicate")

ISNA function will check the value of Vlookup function. If Vlookup function returns the # N / A error, the ISNA function will return TRUE value. Where # N / A is a non-duplicate data, If will return the result No.

If VLOOKUP returns a specific value, the ISNA function will return FALSE. The IF function will return a false condition of 'Duplicate'.

Họ và tên	Kiểm tra	Kết quả
Lê Anh Đức	Lê	=IF(ISNA(VLOOKUP(Sheet1!C3,Sheet2!\$C\$2:\$E\$11,1,0)),\"Không\", \"Trùng\")
Phạm Thu Hà		
Trần Tuấn Minh	Trần	
Nguyễn Vy Oanh	#N/A	
Phùng Đức Trí	#N/A	
Bùi Hà My	Bùi Hà My	
Nguyễn Minh Đức	#N/A	

Step 2:

The results in the first box will notify the same. Continuing to scroll down to the boxes below will get different messages, corresponding to each value.

Họ và tên	Kiểm tra	Kết quả
Lê Anh Đức	Lê Anh Đức	Trùng
Phạm Thu Hà	#N/A	Không
Trần Tuấn Minh	Trần Tuấn Minh	Trùng
Nguyễn Vy Oanh	#N/A	Không
Phùng Đức Trí	#N/A	Không
Bùi Hà My	Bùi Hà My	Trùng
Nguyễn Minh Đức	#N/A	Không

Step 3:

So you have the results of the Notification and No notification for the checklist. Finally, we can delete the **Check** column to compact the data table and interface more scientific tables without the # N / A error message.

Họ và tên	Kiểm tra	Kết quả
Lê Anh Đức	Lê Anh Đức	Trùng
Phạm Thu Hà	#N/A	Không
Trần Tuấn Minh	Trần Tuấn Minh	Trùng
Nguyễn Vy Oanh	#N/A	Không
Phùng Đức Trí	#N/A	Không
Bùi Hà My	Bùi Hà My	Trùng
Nguyễn Minh Đức	#N/A	Không

Results of complete Sheet 1 data sheet as shown.

The screenshot shows an Excel spreadsheet with the following data:

Họ và tên	Kết quả
Lê Anh Đức	Trùng
Phạm Thu Hà	Không
Trần Tuấn Minh	Trùng
Nguyễn Vy Oanh	Không
Phùng Đức Trí	Không
Bùi Hà My	Trùng
Nguyễn Minh Đức	Không

The formula bar shows the formula: `=IF(ISNA(VLOOKUP(Sheet1!C9,Sheet2!C2:E11,1,0)),"Không","Trùng")`

Above is how to use Vlookup function to search for duplicate values ??from multiple sheets on Excel. If done, you should combine the ISNA function, IF function and VLOOKUP function to produce more beautiful and faster filter results.

See more:

1. How to copy Word data to Excel keeps formatting
2. Instructions on how to separate column content in Excel
3. How to rank on Excel with RANK function

I wish you all success!

You finished reading the article "**How to filter duplicate data on 2 Excel sheets**" edited by the [TipsMake](#) team. We hope this article has provided you with many useful tech tips and tricks. You can search for similar articles on tips and guides. Thank you for reading and for following us regularly.