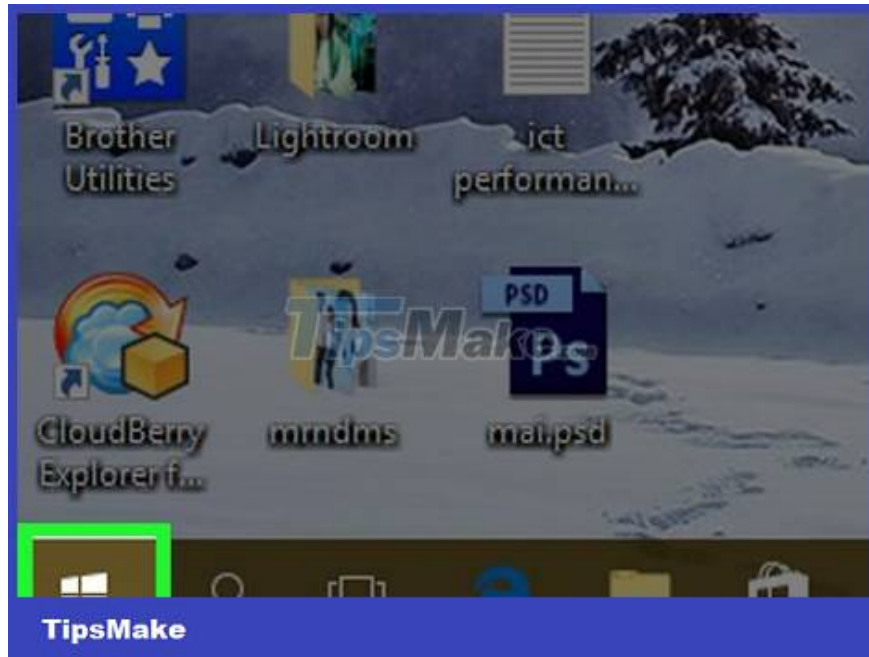


# How to Execute a Program in Command Prompt

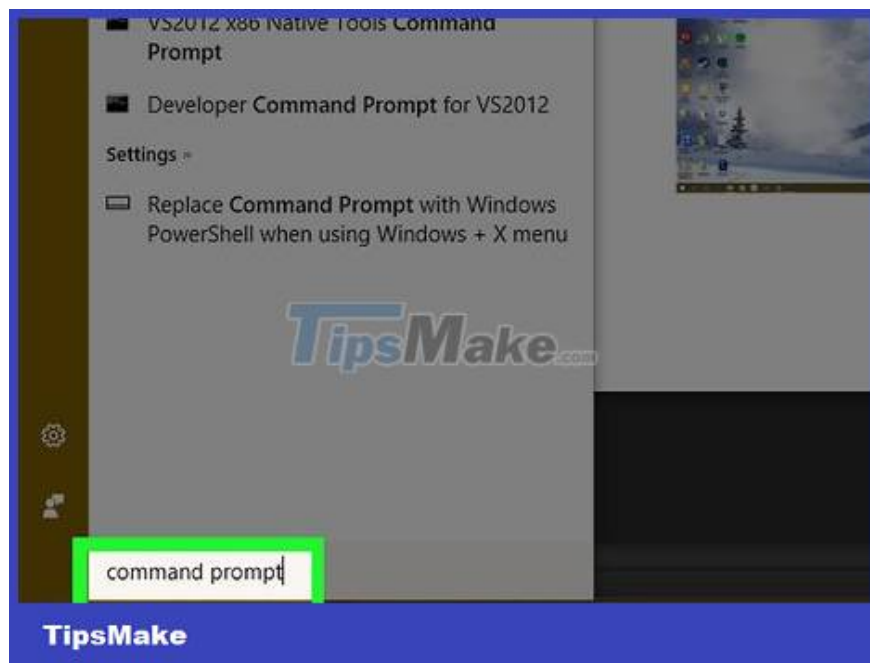
This article shows you how to open a program on a Windows computer using the Command Prompt application. Although you can only open programs that are installed in folders created by Windows (such as Desktop), you are still allowed to add the program's folder to the Command Prompt list to open the program with the Command Prompt.

## Open basic programs

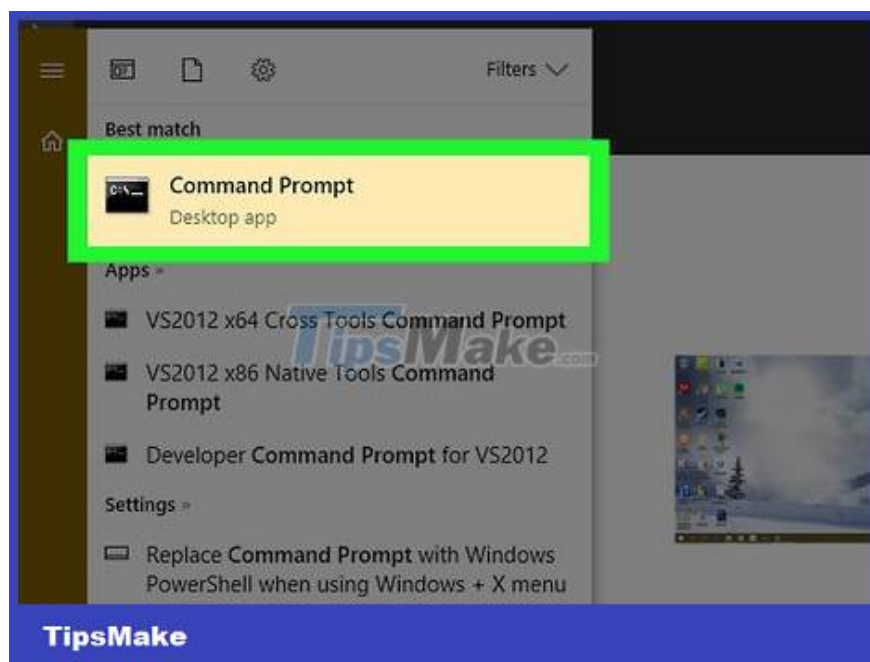


Open Start by clicking the Windows icon in the lower left corner of the screen or pressing the Windows logo key on your computer keyboard.

If you are using Windows 8, you will place the mouse pointer in the upper right corner of the screen and then click the magnifying glass icon in the menu that is displayed.

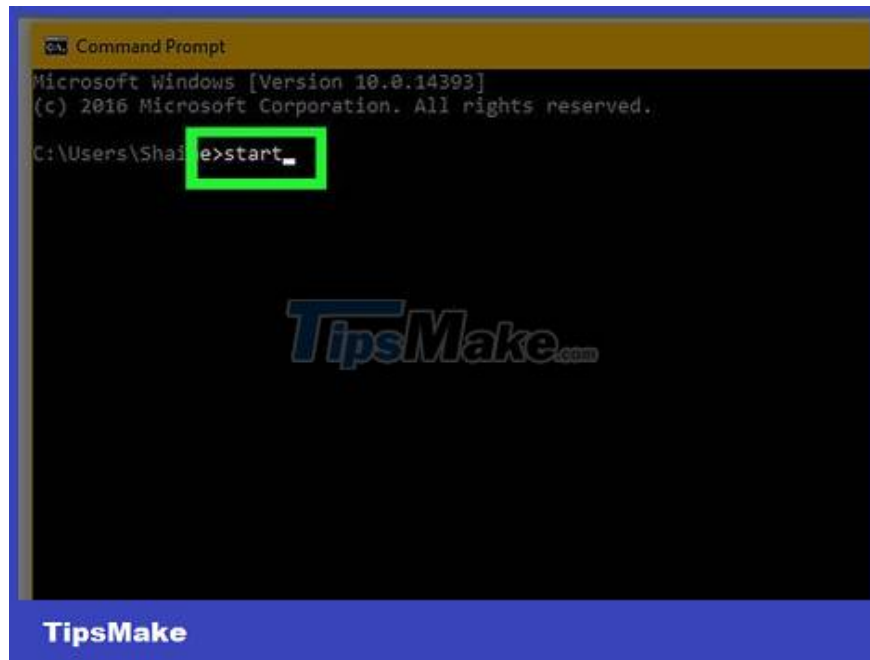


Type command prompt into Start to search for the Command Prompt program on your computer.

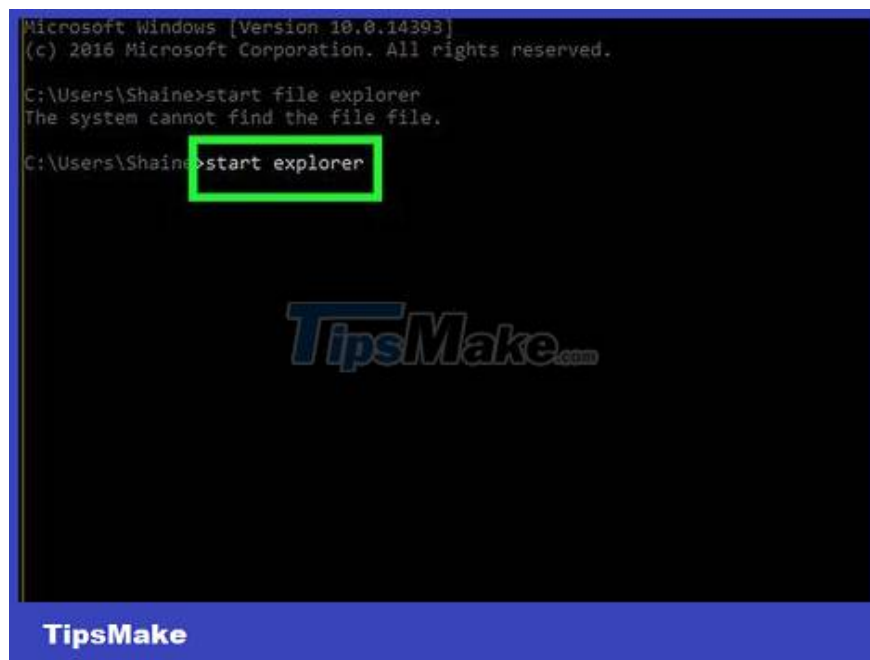


Click Command Prompt with the black box icon at the top of the Start window to open the program.

If you use a computer with limited access, you cannot open the Command Prompt.



Type start into the Command Prompt. Remember to put a space after start.



Type the program name into the Command Prompt. You must enter the file's system name, not the name displayed under the program's icon (such as the Command Prompt's system name cmd). Some familiar program names are as follows:

File Explorer - explorer

Calculator - calc

Notepad - notepad

Character Map - charmap

Paint - mspaint

Command Prompt (new window) - cmd

Windows Media Player - wmplayer

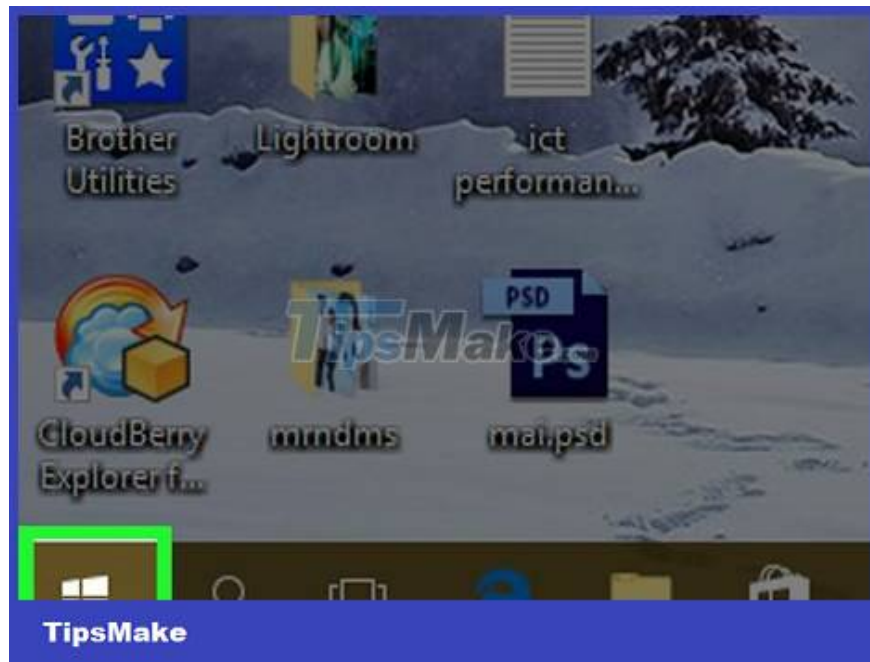
Task Manager - taskmgr



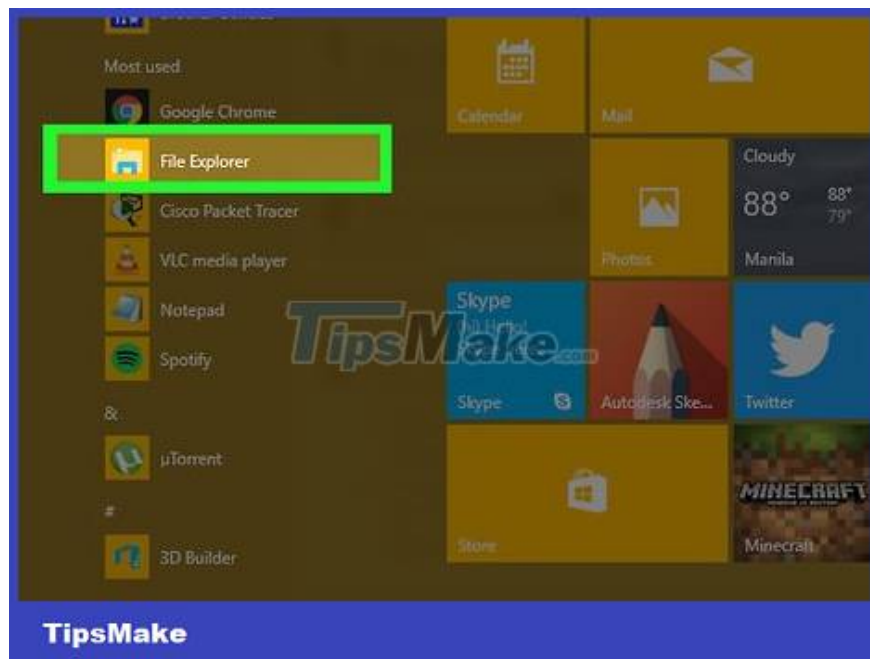
Press ? Enter. After entering the start program\_name command, the computer will execute the "start" command for the selected program. You will see the program open after a few seconds of entering the command.

If the selected program does not start, it is possible that the program is saved in a folder that is not in the Command Prompt search path. You can add the program's folder to the Command Prompt path to fix this problem.

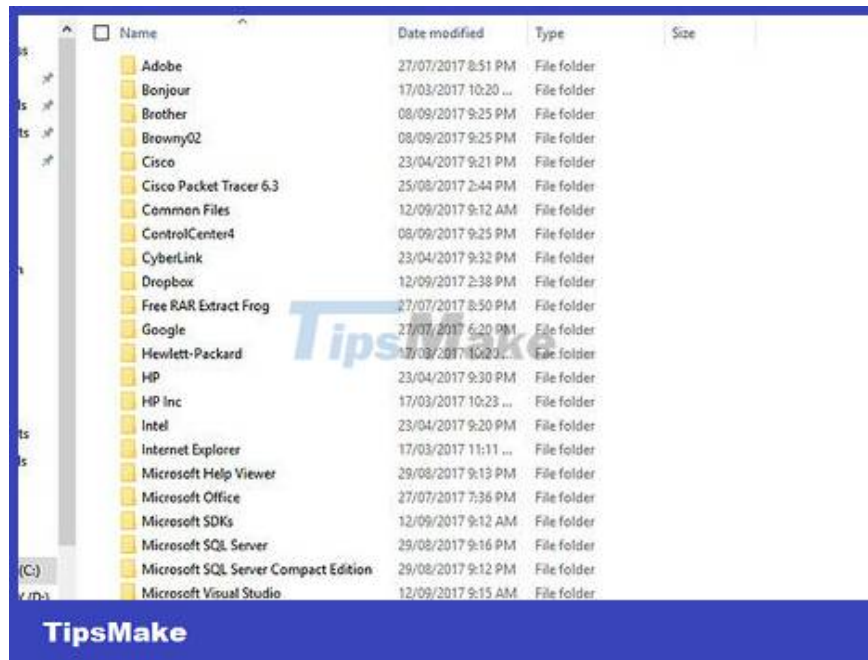
## **Open some specific programs**



Open Start by clicking the Windows icon in the lower left corner of the screen or pressing the Windows key on your computer's keyboard.



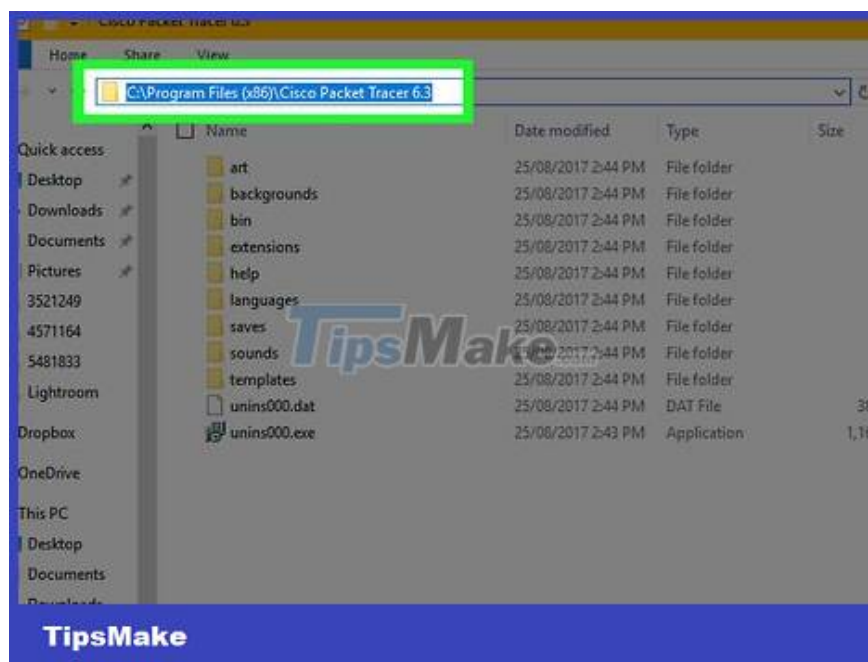
Open File Explorer by clicking the folder icon in the lower left corner of the Start window.



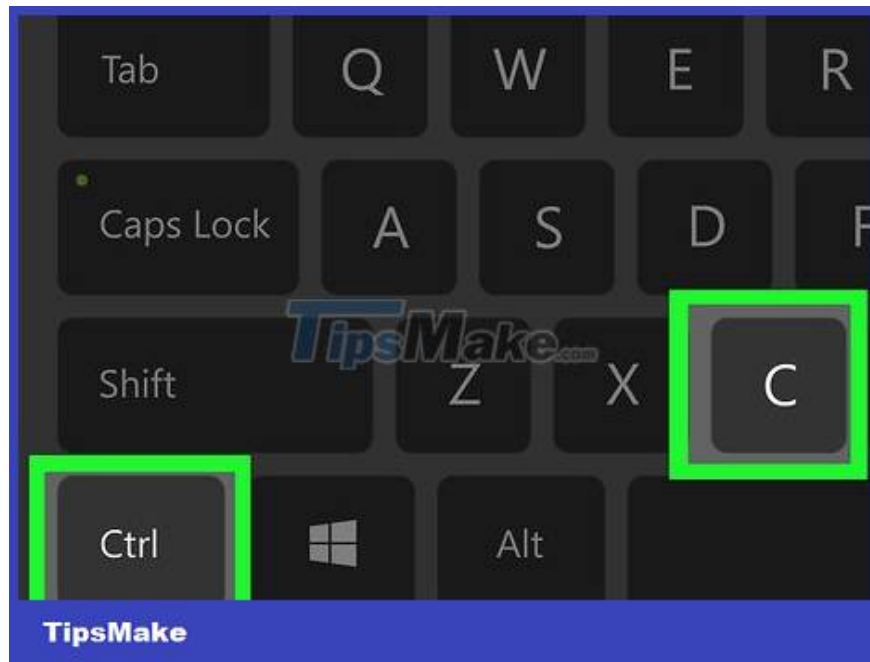
Open the folder where your program is saved. Access the folder containing the program you want to open by clicking any folder that needs to be opened.

When the icon of the program you want to open with Command Prompt shows up in the middle of the File Explorer window, you've opened the correct folder.

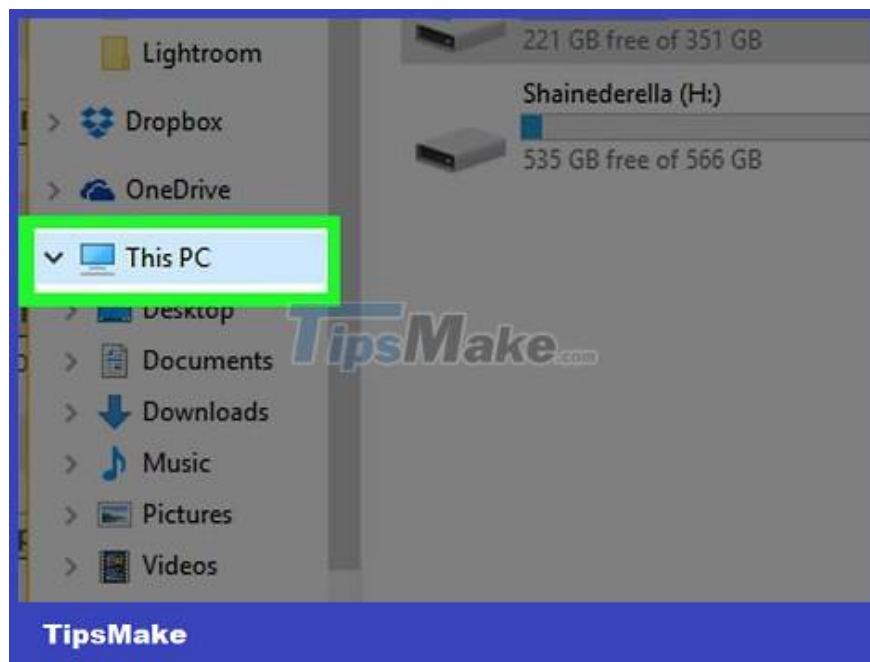
If you don't know where the program is saved, you can either access the "Program Files" folder on your hard drive as many programs are stored here, or you can use the search bar at the top of the window.



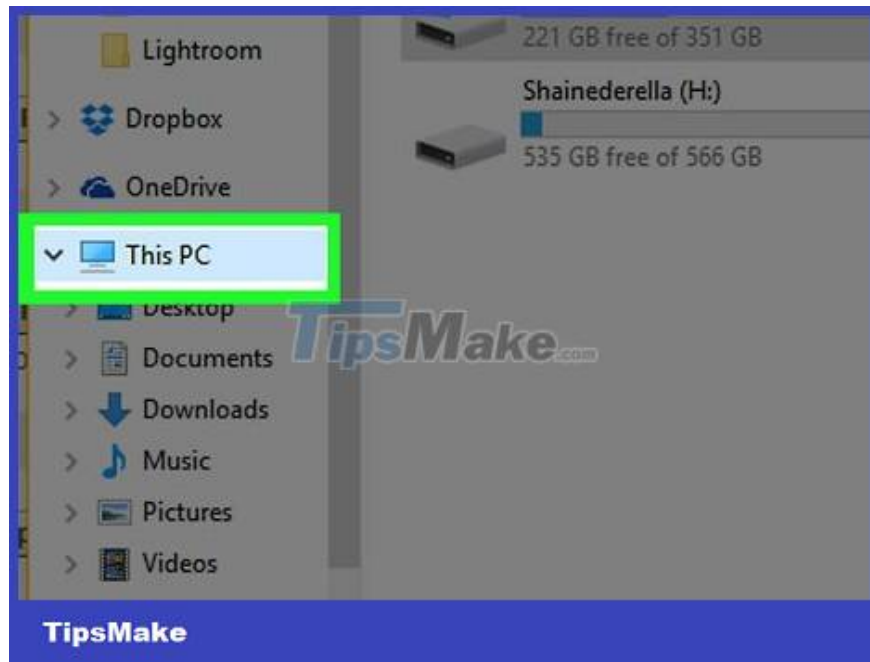
Select the path to the program's directory. Right-click the address bar at the top of the File Explorer window. You should see the contents of the address bar highlighted in green.



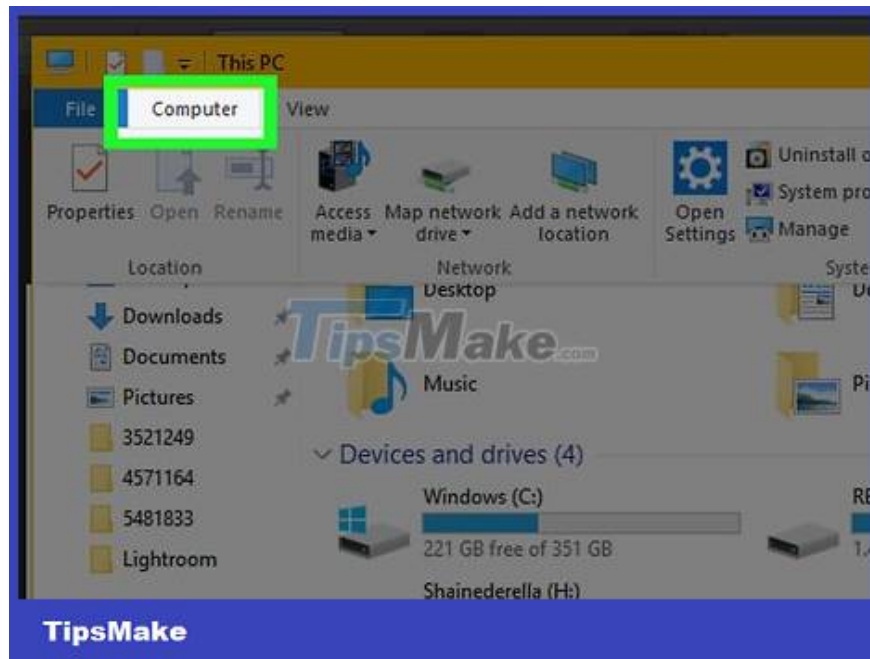
Copy the path by pressing Ctrl and C at the same time.



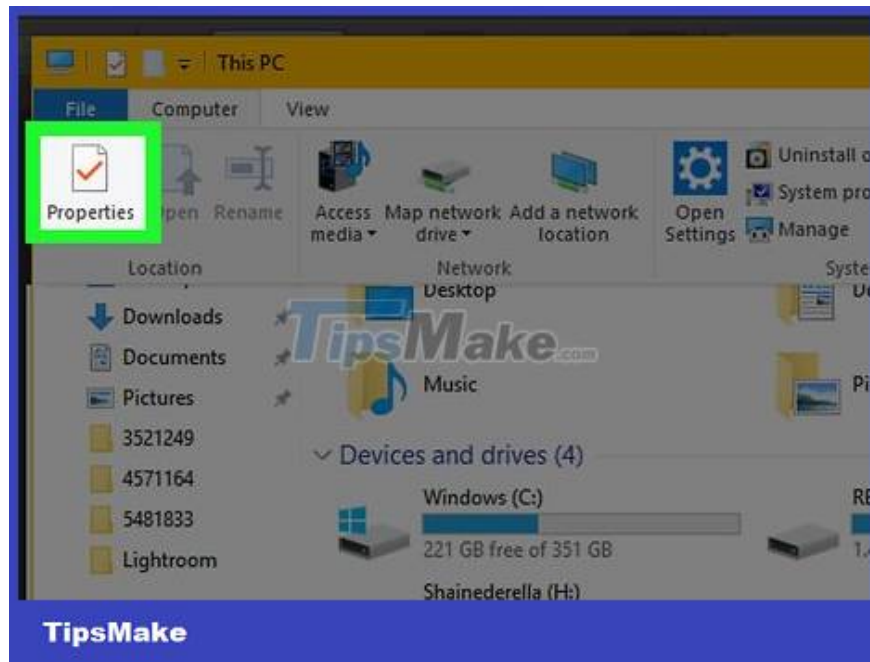
Click the This PC folder on the left side of the File Explorer window.



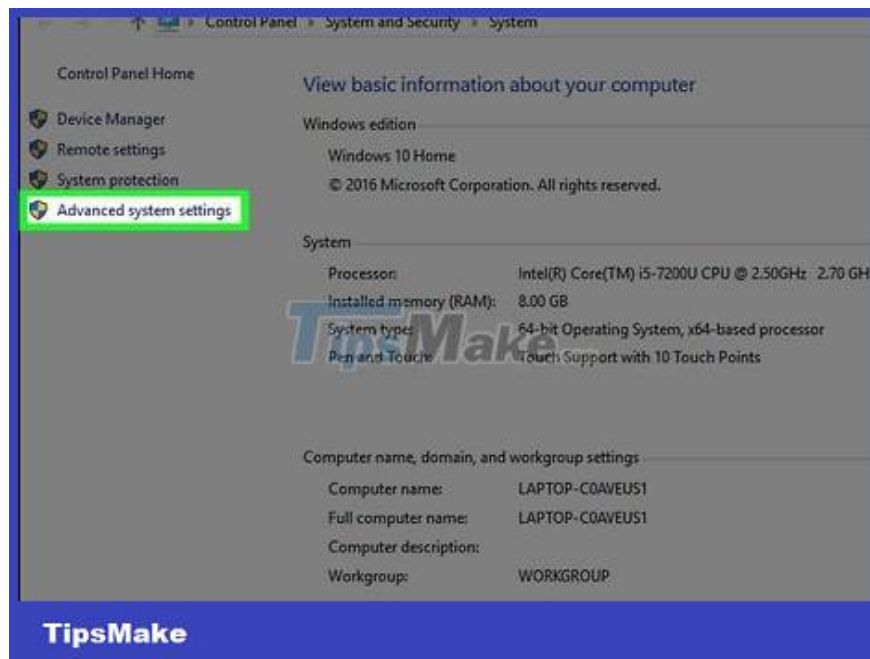
Click the This PC folder again. This will deselect any folders in the This PC folder, allowing you to open the This PC folder's properties.



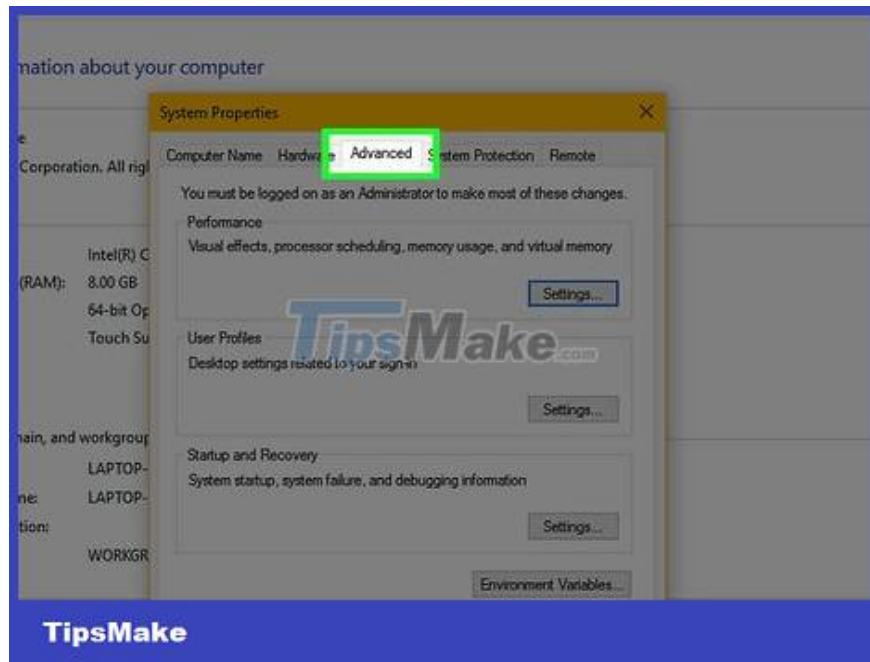
Click the Computer tab in the upper-left corner of the page to view the toolbar.



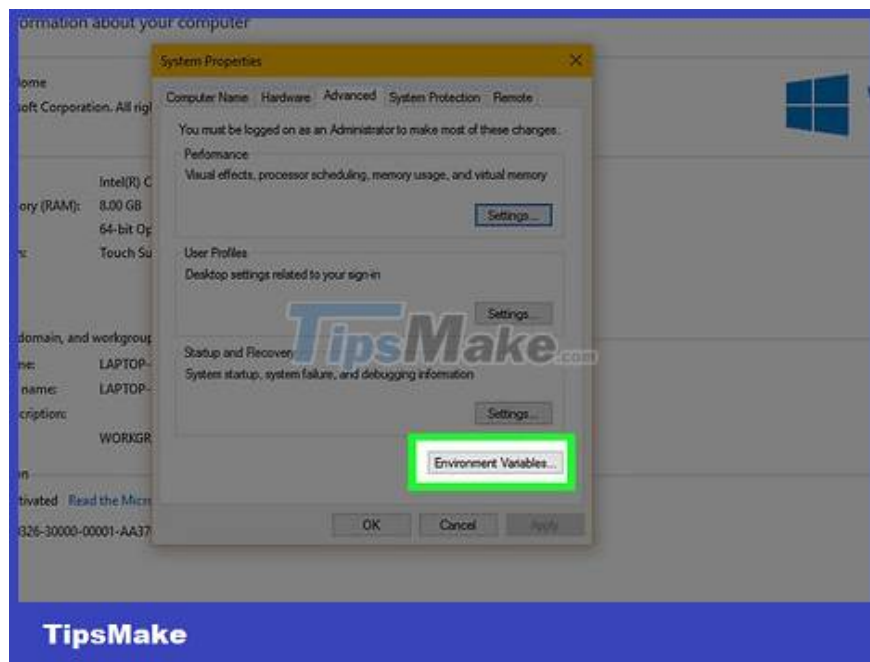
Click Properties . It's a white box icon with a red check mark. After clicking, you will see another window display.



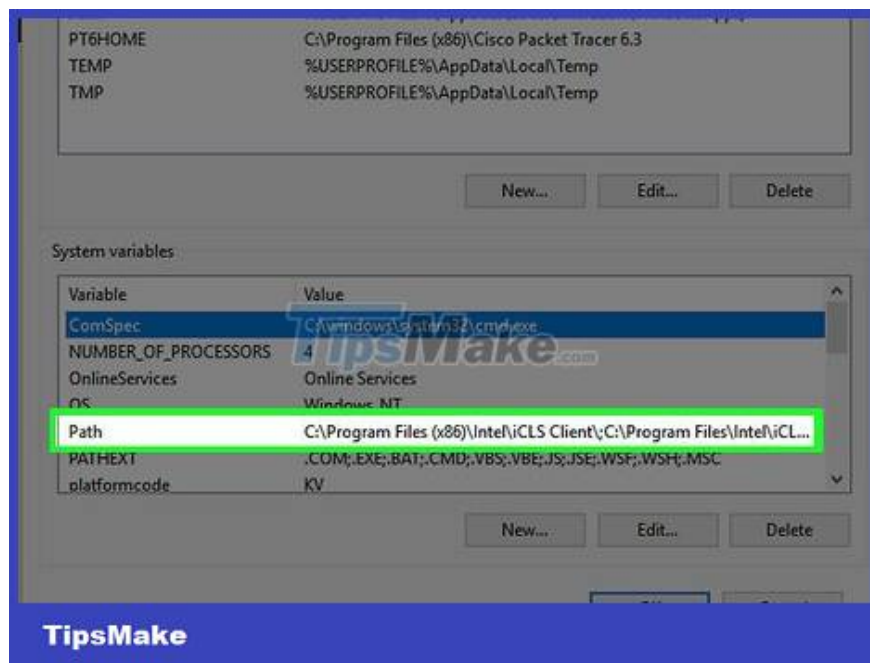
Click the Advanced system settings link in the upper-left corner of the window. This will open another window.



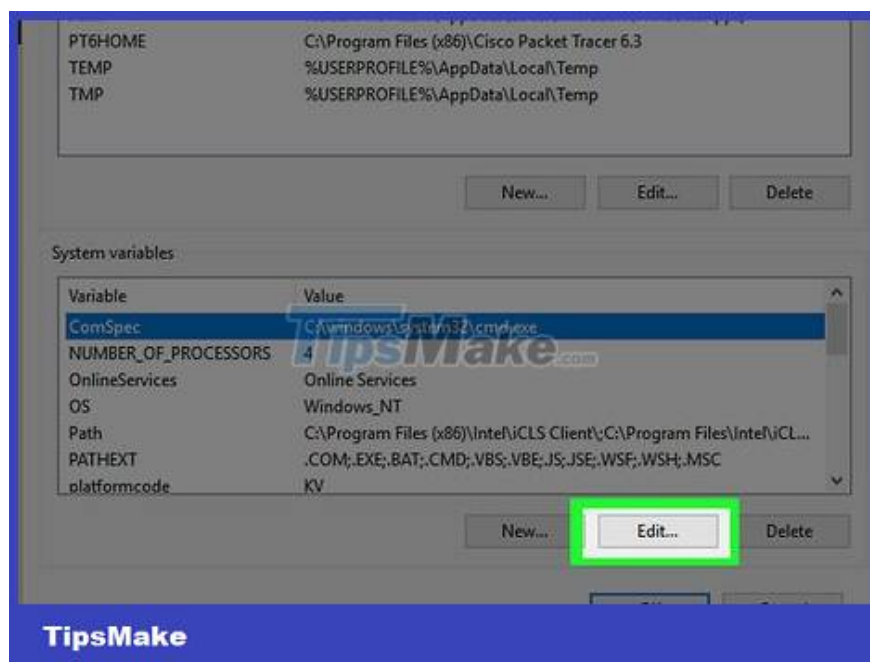
Click the Advanced tab at the top of the window.



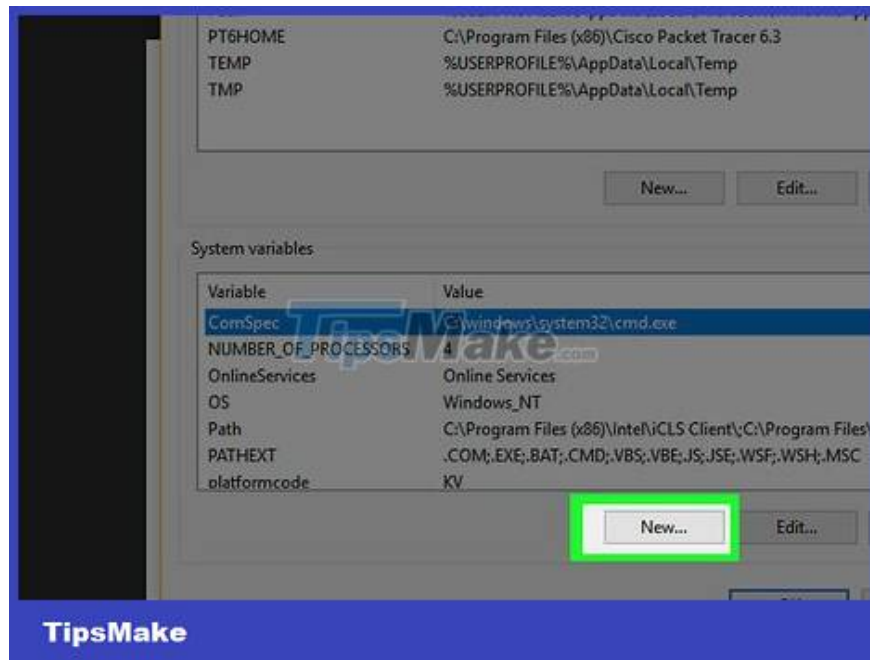
Click the Environment Variables... option at the bottom of the window. The screen will display another window.



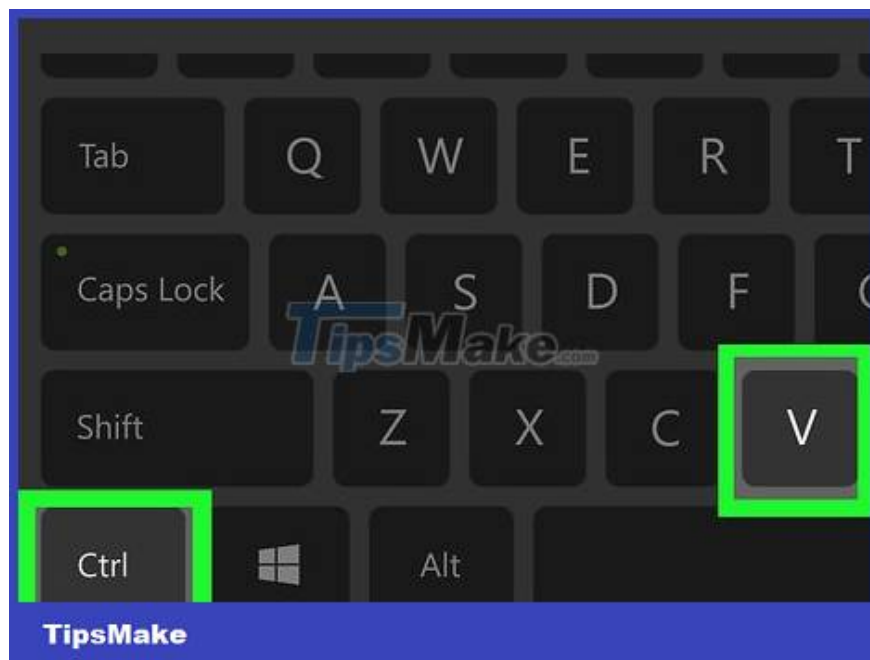
Click Path in the "System variables" window near the bottom of the page.



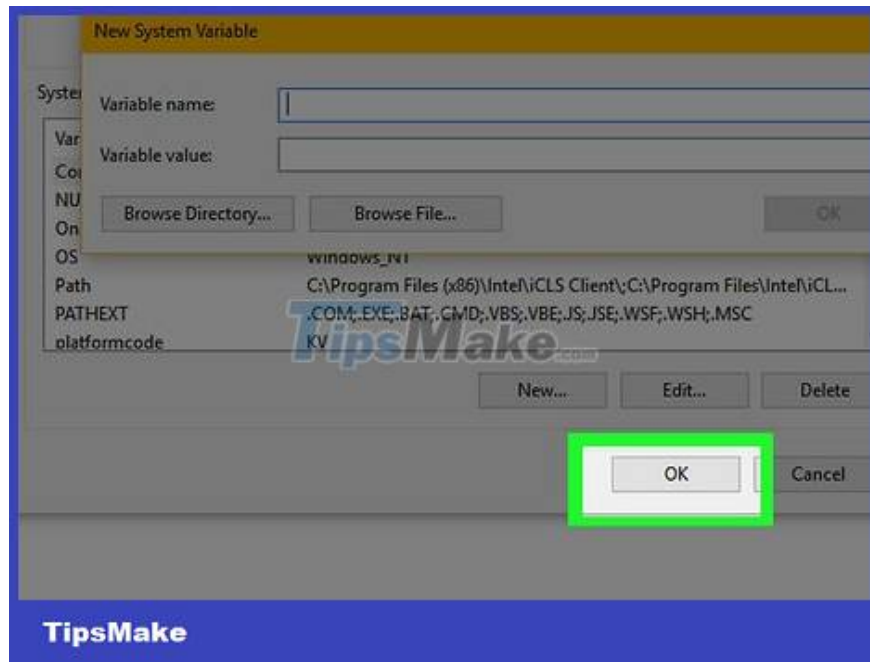
Click the Edit... option at the bottom of the page.



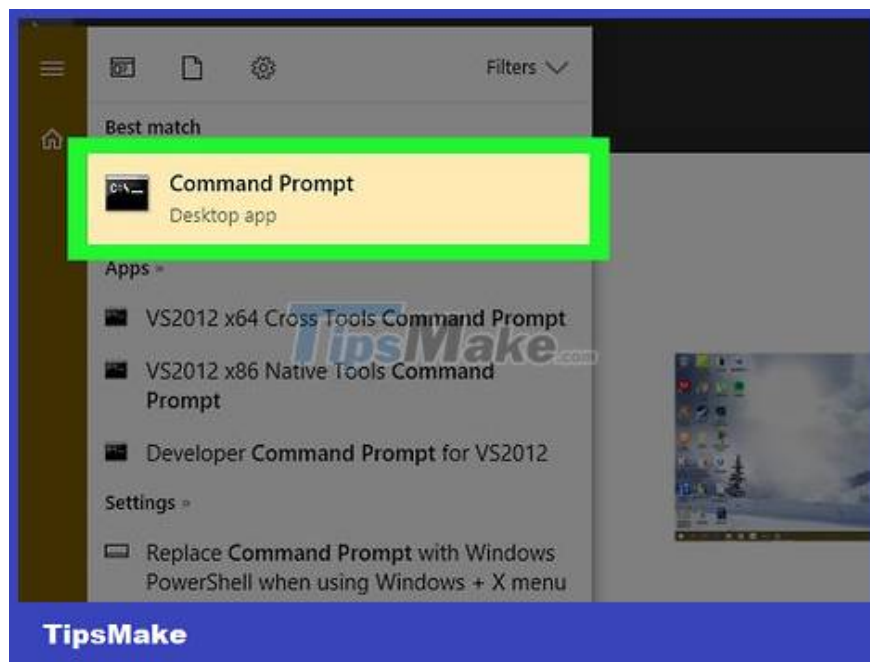
Click New in the upper-right corner of the Edit page.



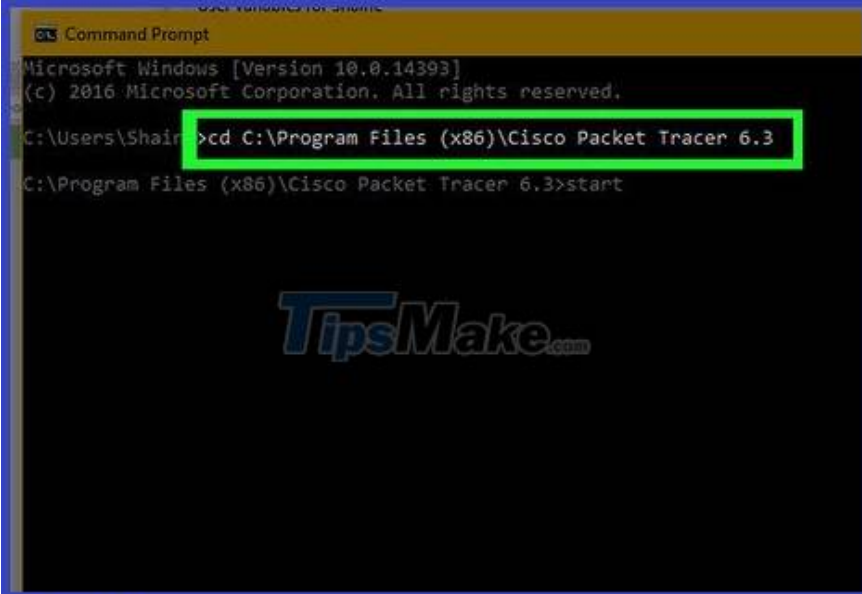
Paste the path of the program. Press the Ctrl and V keys at the same time to paste the path into the Path window.



Click OK to save the path.



Open Command Prompt.

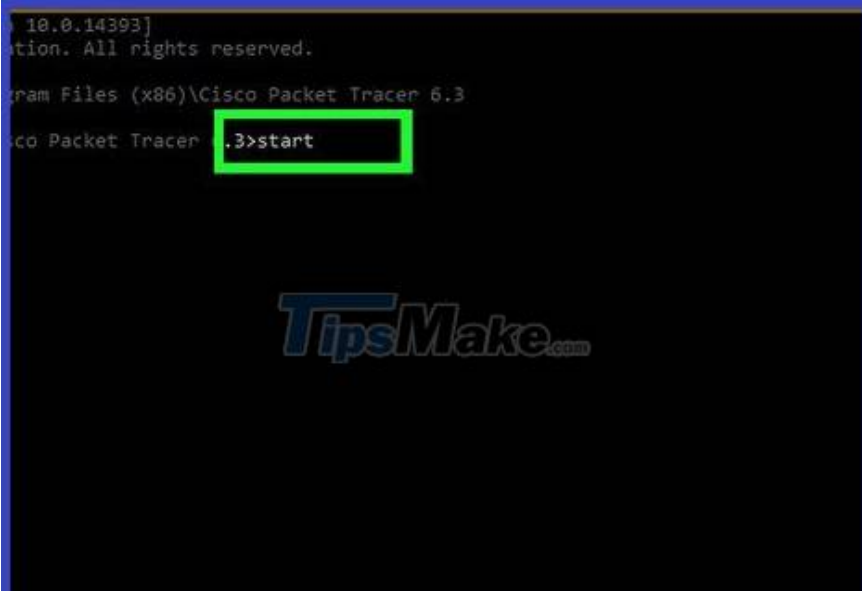


```
Microsoft Windows [Version 10.0.14393]
(c) 2016 Microsoft Corporation. All rights reserved.

C:\Users\Shair>cd C:\Program Files (x86)\Cisco Packet Tracer 6.3
C:\Program Files (x86)\Cisco Packet Tracer 6.3>start
```

TipsMake

Open path. Type cd into the Command Prompt, press the spacebar, then press Ctrl+V to paste the program's path and press ? Enter.

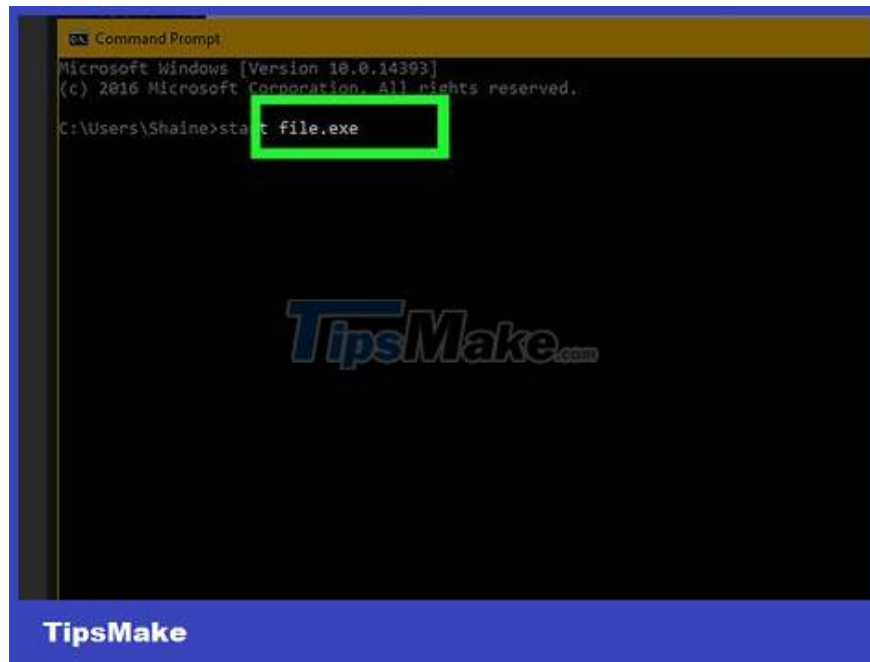


```
Microsoft Windows [Version 10.0.14393]
(c) 2016 Microsoft Corporation. All rights reserved.

C:\Program Files (x86)\Cisco Packet Tracer 6.3
C:\Program Files (x86)\Cisco Packet Tracer 6.3>.3>start
```

TipsMake

Type start into the Command Prompt. Remember to put a space after start.



Enter the name of the program. Type the exact name of the program as shown in the directory, then press ? Enter and the program will be started.

If there is a space in the name of the program, type an underscore ("\_") at the space (such as system\_shock instead of system shock).

Or, you can enclose the path in quotes. (Example: start "C:/Program Files/Windows Media Player/wmplayer.exe")

You finished reading the article "**How to Execute a Program in Command Prompt**" edited by the [TipsMake](#) team. We hope this article has provided you with many useful tech tips and tricks. You can search for similar articles on tips and guides. Thank you for reading and for following us regularly.