

How to Erase Ubuntu

If you've decided that Ubuntu is no longer the right operating system for you, then you might be wondering how to go about deleting it from your system. Removing Ubuntu when it's the only operating system on your computer is fairly...

Method 1 of 2:

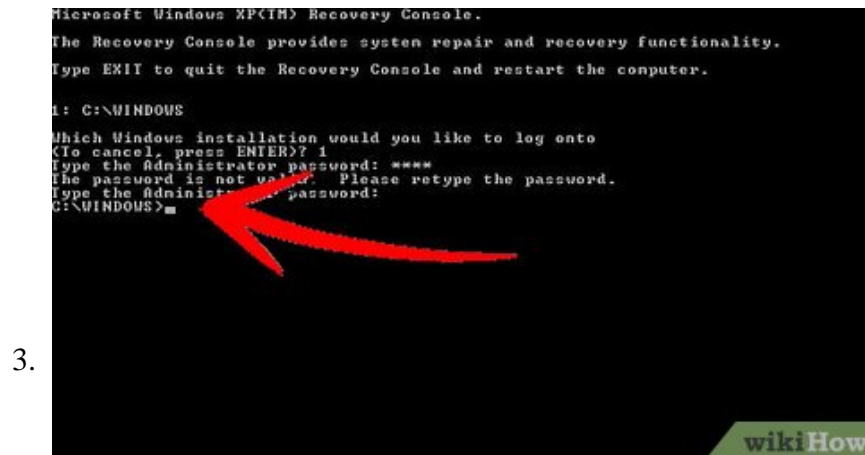
Removing Ubuntu when Dual-Booting with Windows



Insert your Windows installation disc into your computer. This could also be labeled as a Recovery disc. If you don't have an installation or recovery disc, you can create a recovery disc in Windows.



Boot from the CD. In order to boot from your recovery disc, you'll need to set your BIOS to boot from your CD/DVD drive. When the computer first starts up, press the BIOS setup key. This is typically F2, F10, F12, or Del. Navigate to the Boot menu and select your CD/DVD drive. Once you've selected it, save and reboot your computer.

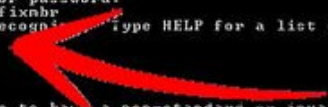


Open the command prompt. From the Recovery Disc's main menu, select the Command Prompt option. If you are using an Installation Disc, select 'Repair your computer', which should open the Command Prompt.

```
The Recovery Console provides system repair and recovery functionality.
Type EXIT to quit the Recovery Console and restart the computer.

C:\WINDOWS
Which Windows installation would you like to log onto
(To cancel, press ENTER)? 1
Type the administrator password: ****
The password is not valid. Please retype the password.
Type the administrator password:
C:\WINDOWS>bootrec /fixmbr
The command is not recognized. Type HELP for a list of supported commands.
C:\WINDOWS>fixmbr
** CAUTION **
This computer appears to have a non-standard or invalid master
boot record.
FIXMBR may damage your partition tables if you
proceed.
This could cause all the partitions on the current hard disk
to become inaccessible.
If you are not having problems accessing your drive,
do not continue.
Are you sure you want to write a new MBR? Y
```

4.



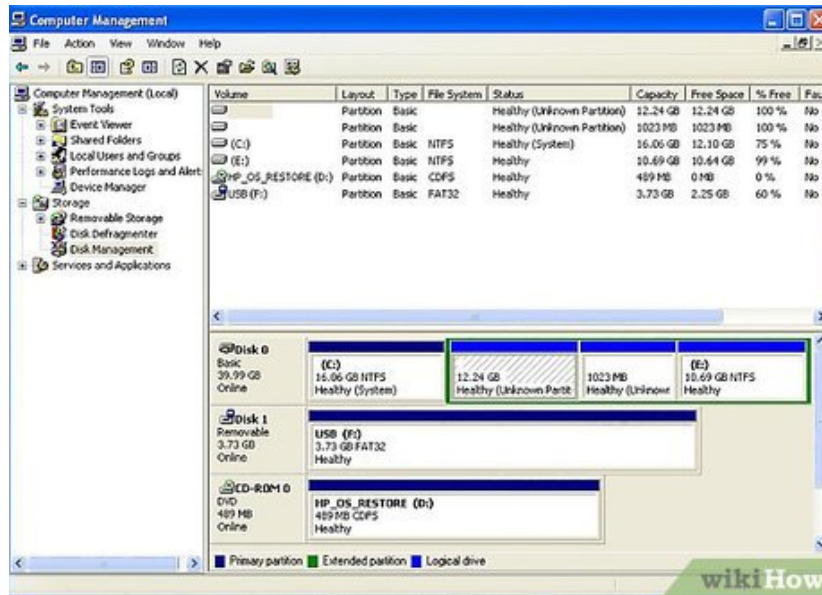
Fix your Master Boot Record. Performing this command will remove the dual-boot option when you start your computer, and boot straight into Windows. Enter the following command at the Command Prompt:

```
bootrec /fixmbr
```



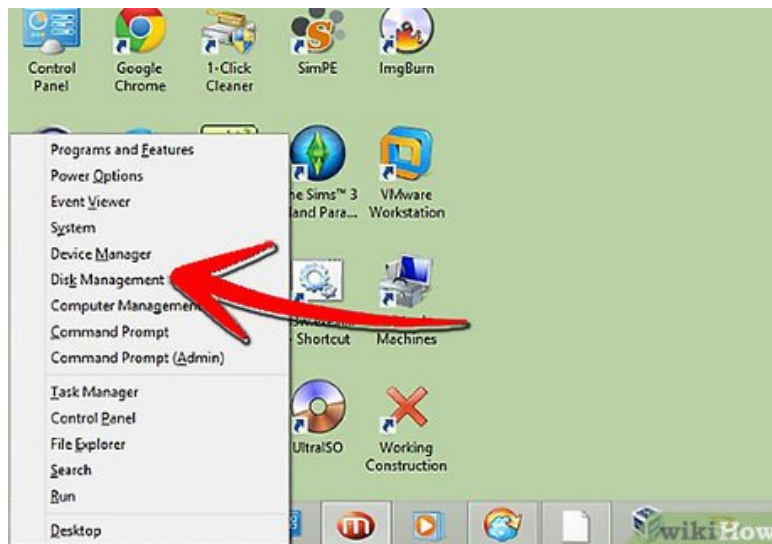
Reboot your computer. When you reboot, you should not see the option to select Ubuntu. Instead, you will be taken directly into Windows.

6.

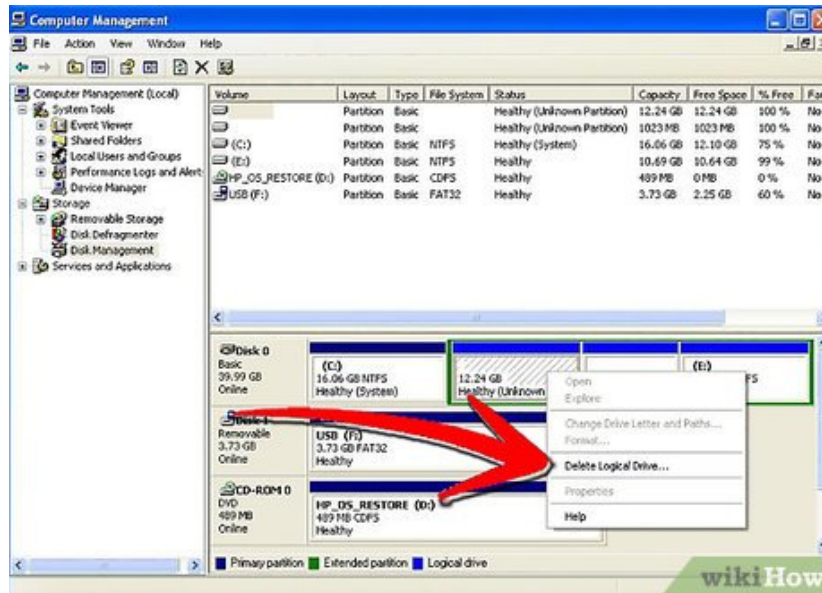


Open Disk Management. Once in Windows, it's time to get rid of the old Ubuntu installation and reclaim the hard disk space. Press Start, and the right-click on Computer/My Computer. Select Manage and then click Disk Management in the left frame of the Computer Management window.

1. In Windows 8, press the Windows key + X and select Disk Management from the menu.



7.



Delete your Ubuntu partitions. Right-click on your Ubuntu partitions and select Delete. Make sure that you are deleting the correct partition. Once the partition is deleted, it will become unallocated space. Right-click on your Windows partition and select Extend partition. Select the free space just created to add it to your Windows installation.^[1]

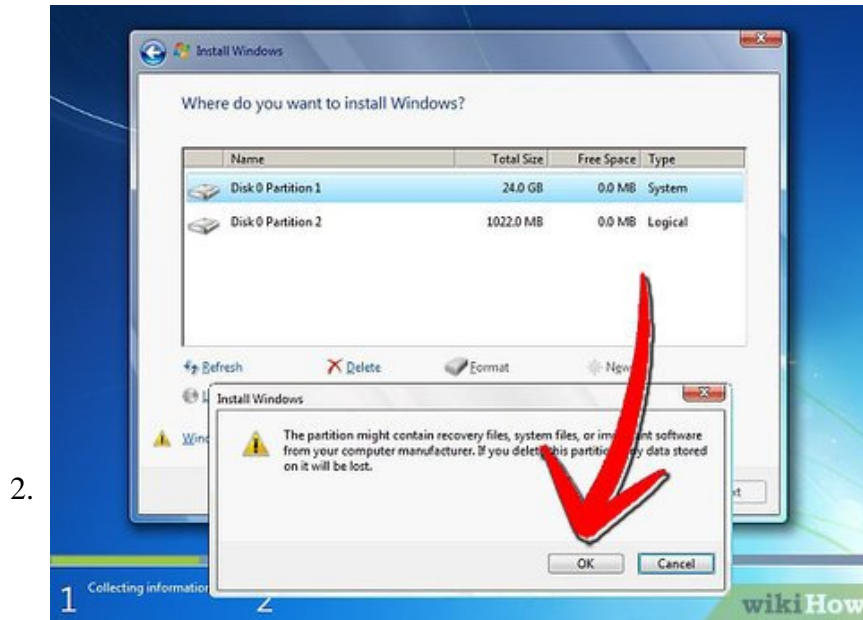
Method 2 of 2:

Removing Ubuntu from a Single-Boot System

1.



Insert the disc of the operating system you want to install. When Ubuntu is the only operating system of the computer, you can remove it by using an operating system install disc for any operating system. Once you've inserted it, restart the computer and boot from CD, as outlined in Step 2 above.



Delete the Ubuntu partition. Once you start the installation process for the new operating system, you are given the opportunity to create and delete partitions on your hard drive. Select your Ubuntu partition and delete it. This will return the partition to unallocated space.



Continue installing the operating system, or remove the disc and power down the computer. Once the partition is deleted, Ubuntu has been successfully removed from the computer. You can now install a new operating system such as Windows 7 or Windows 8.

1. If you choose not to install the operating system, your computer will be unusable until one is installed.

```
error: unknown filesystem.
grub rescue> rescue
Unknown command 'rescue'.
grub rescue> grub
Unknown command 'grub'.
grub rescue> fix
Unknown command 'fix'.
grub rescue> help
Unknown command 'help'.
grub rescue> clear
Unknown command 'clear'.
grub rescue> fix grub
Unknown command 'fix'.
grub rescue> grub loader
Unknown command 'grub'.
grub rescue> fixmbr
Unknown command 'fixmbr'.
grub rescue> clear
Unknown command 'clear'.
grub rescue> cls
Unknown command 'cls'.
grub rescue> clear
Unknown command 'clear'.
grub rescue> _
wikiHow
```

You finished reading the article "**How to Erase Ubuntu**" edited by the [TipsMake](#) team. We hope this article has provided you with many useful tech tips and tricks. You can search for similar articles on tips and guides. Thank you for reading and for following us regularly.
