

How to enter Safe Mode on Windows 7

How to enter Safe Mode on Windows 7. Safe Mode is a great rescue mode when the computer encounters emergencies but not to the point of having to use the backup system partition or have to reinstall the entire system. Here TipsMake.com will postpone

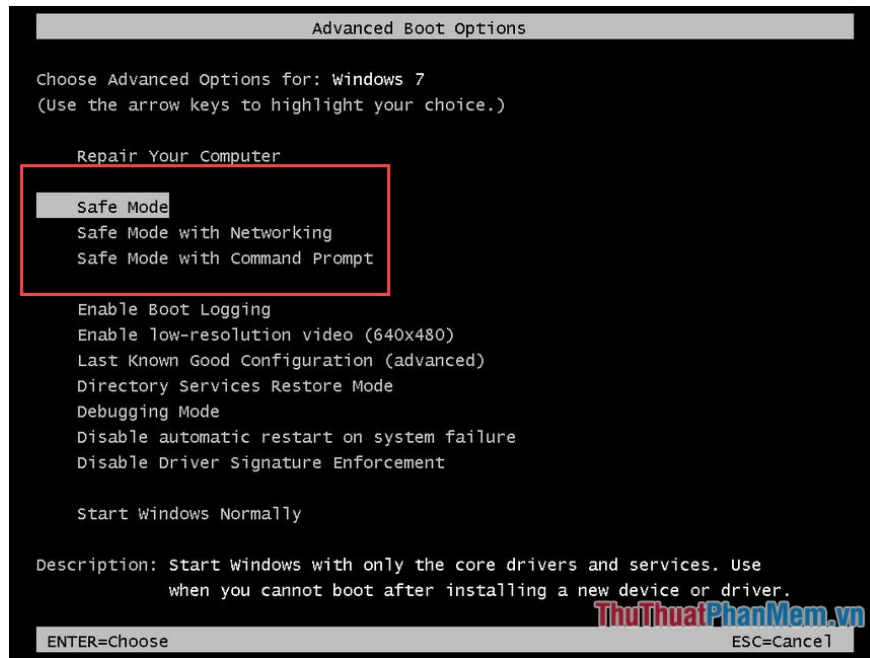
Safe mode is a mode that helps windows start up with minimal equipment and services, which can diagnose where Windows is crashing and fix it. When in this mode, the installed software will not work and the virus will not affect. Safe Mode is a great salvage mode when the computer encounters emergencies but not to the point where it is necessary to use a system backup partition or reinstall the whole system. Here TipsMake.com will guide you the easiest ways to enter safe mode on windows 7.



Method 1: Go to Safe Mode on Windows 7 with F8 key

Step 1 : Restart your computer.

Step 2 : When your computer starts to boot, you will see a screen displaying the name of the laptop or main line of the computer. At this point, repeatedly press the F8 key on the keyboard until the Advanced Boot Option screen appears.



Step 3 : Use the arrow keys to change the selection. Press Enter to enter the mode you need.

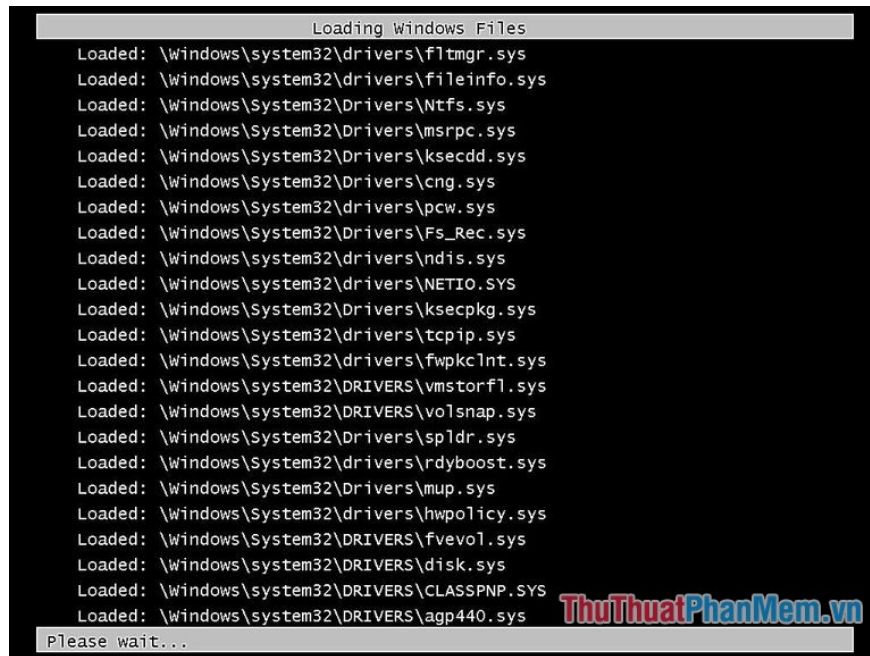
There are 3 options to enter Safe Mode on Windows 7:

Safe Mode : This is the default and commonly used mode. This mode only starts Windows and downloads at least some necessary driver files.

Safe Mode with Networkin g: This mode will load things like in Safe Mode and some network connected drivers. Choose this mode if you need to work with the Internet or an intranet in Safe Mode.

Safe Mode with Command Prompt : This mode will launch Command Prompt instead of Windows Explorer. In some cases, Safe Mode does not work, this is the best option for you.

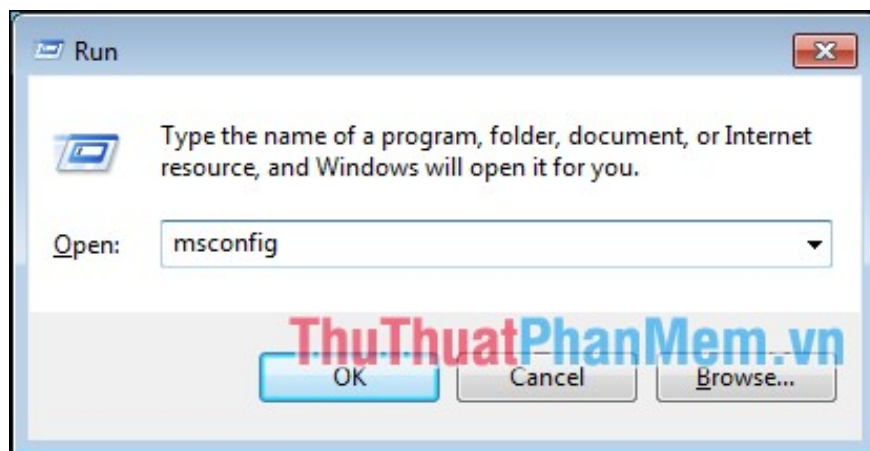
Wait a moment for the download to complete:



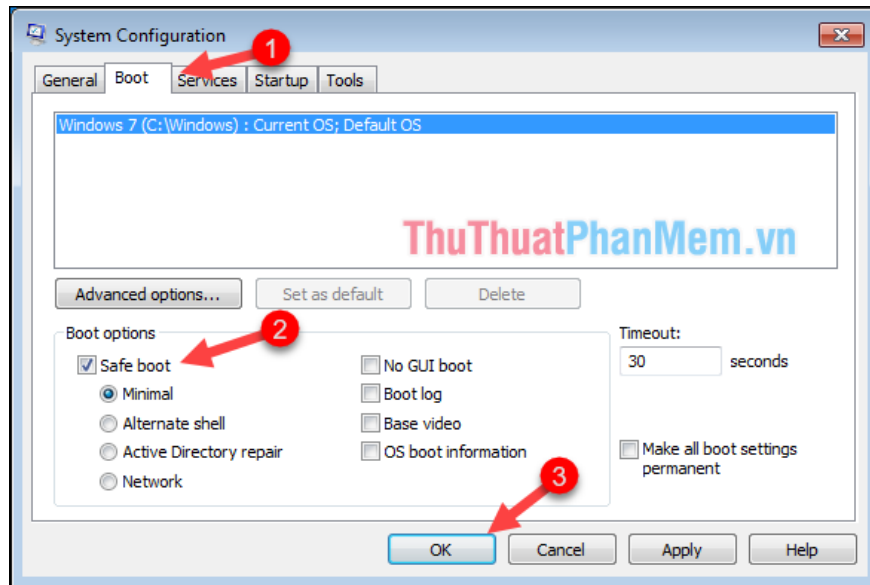
Method 2: Go to Safe Mode with System Configuration

This way we will do it when the computer has booted into Windows.

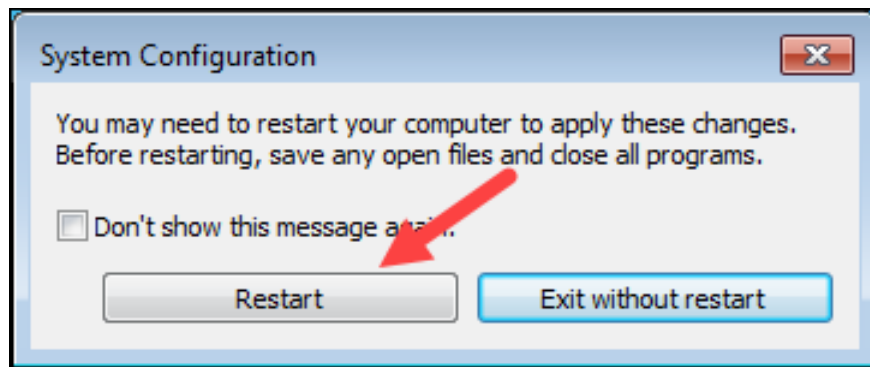
Step 1: You press **Windows + R** to open the Run dialog box, enter the command **msconfig** and press Enter.



Step 2 : In the System Configuration dialog box, select the **Boot** tab, then in the Boot options section, select **Safe boot** and click **OK** .

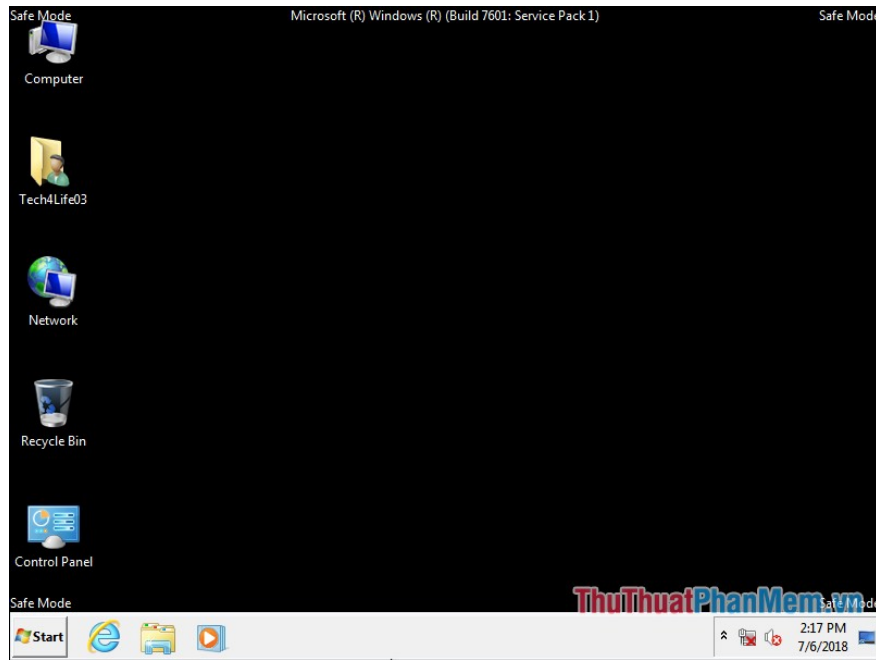


When a message appears, click **Restart**



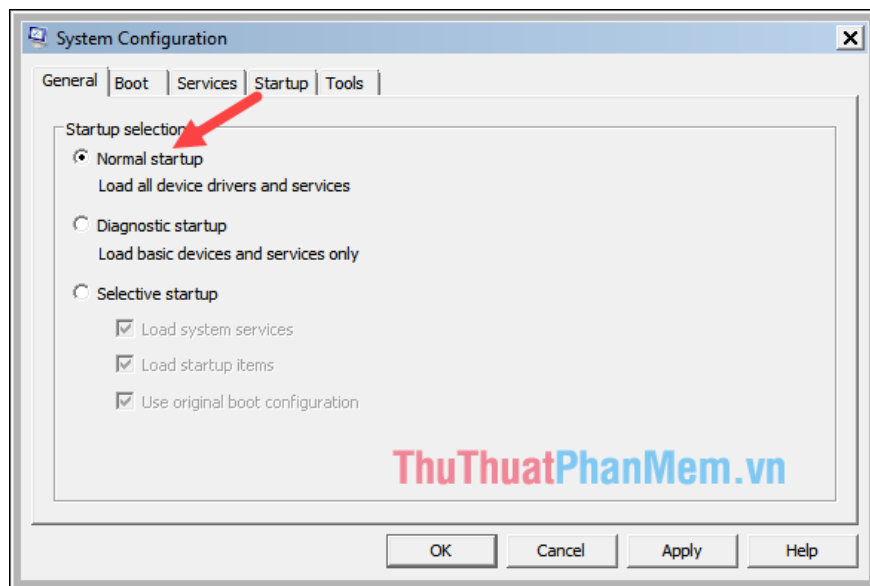
When the computer restarts, Safe Mode will automatically enter.

Safe Mode in the 4 corners of the screen will have Safe Mode for you to easily recognize:



When you're done with Safe Mode, you want to exit this mode, you must turn on System Configuration then in the **General** tab, select **Normal startup** .

Next, go to the Boot tab and uncheck Safe boot and restart the computer.



Above is an instruction on how to enter Safe Mode on Windows 7, hope the article will be helpful to you. Good luck!

You finished reading the article "**How to enter Safe Mode on Windows 7**" edited by the [TipsMake](#) team. We hope this article has provided you with many useful tech tips and tricks. You can search for similar articles on tips and guides. Thank you for reading and for following us regularly.