

How to enter Safe Mode on Windows 10

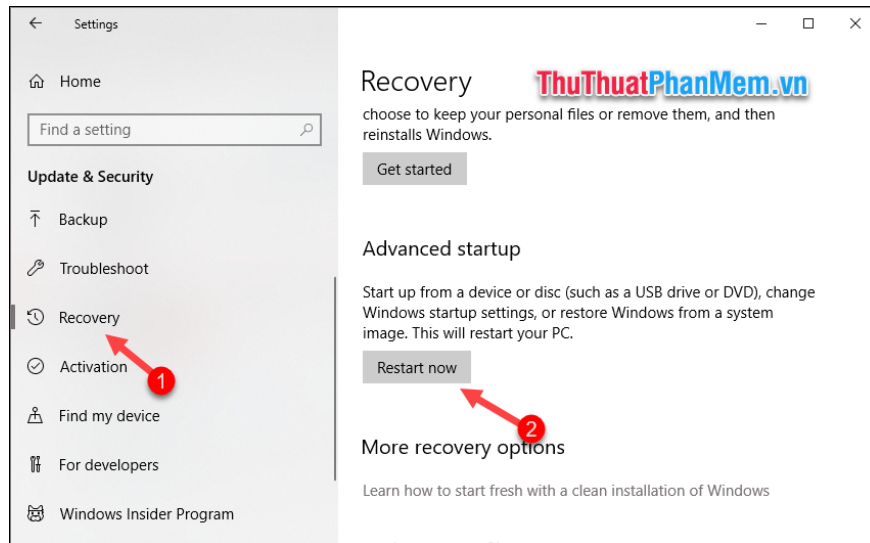
How to enter Safe Mode on Windows 10. Safe mode is the mode that helps windows start up with minimal equipment and services, which can diagnose where Windows is corrupted and fix it.

Safe mode is a mode that helps windows start up with minimal equipment and services, which can diagnose where Windows is crashing and fix it. When in this mode, the installed software will not work and the virus will not affect. Safe Mode is a great salvage mode when the computer encounters emergencies but not to the point where it is necessary to use a system backup partition or reinstall the whole system. Here TipsMake.com will guide you the simplest ways to enter safe mode on windows 10.



1. The first way to enter safe mode via 'Advanced Startup'

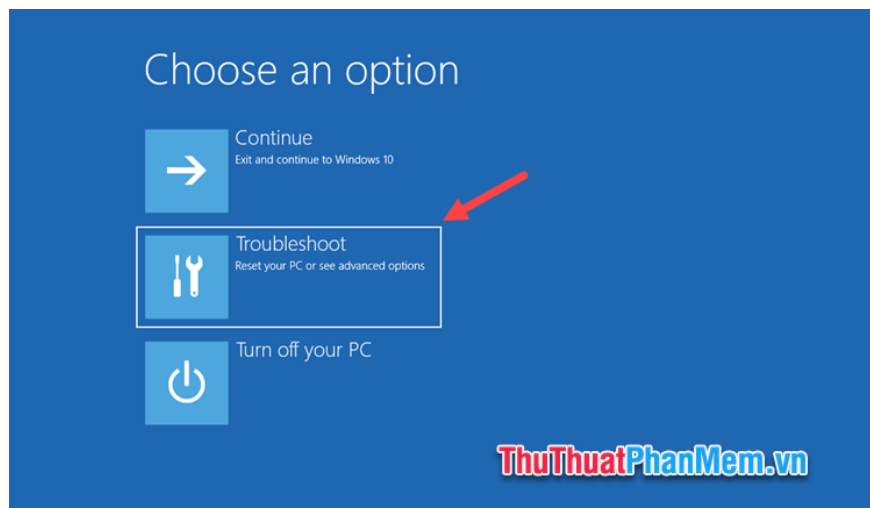
Step 1: Go to **Setting**> **Update & Security**> **Recovery** in the **Advanced startup** section, click **Restart now**.



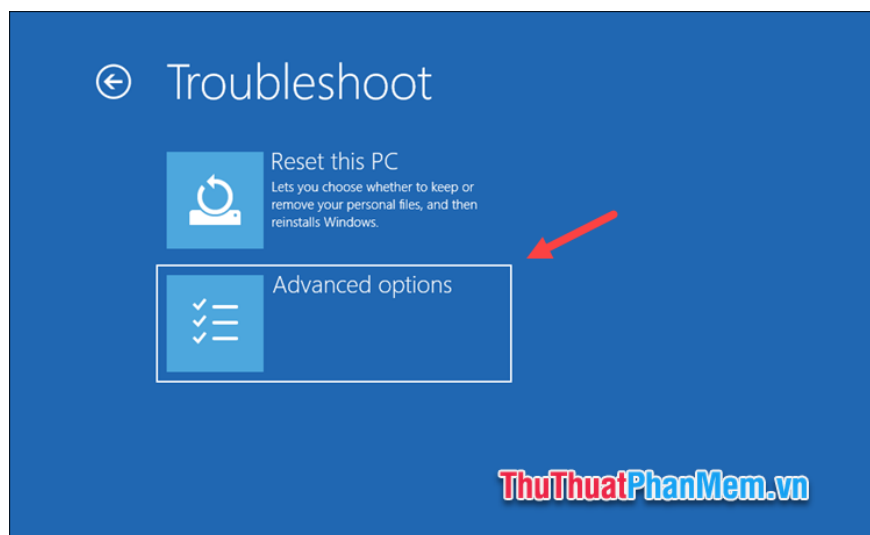
Or a faster way is that you open the Start menu select Power, then you hold down the **Shift** button and press **Restart**.



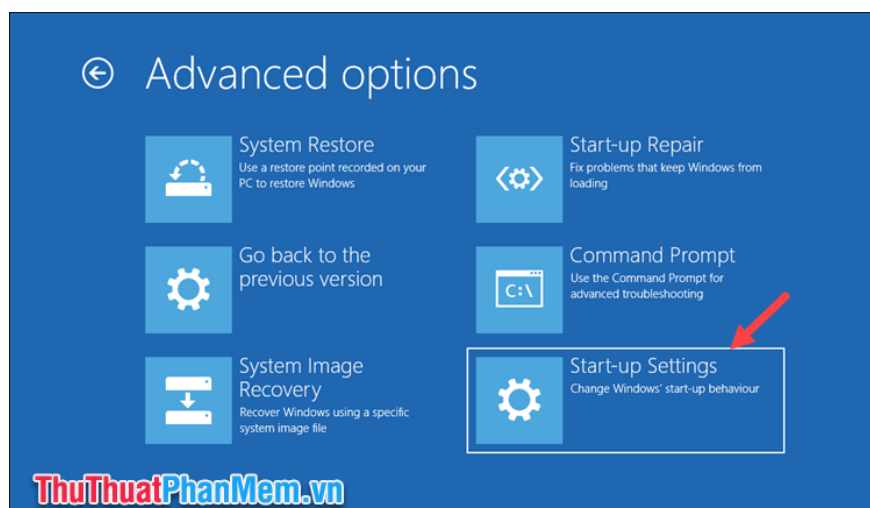
Step 2 : After the computer restarts, there are 3 options on the screen to select **Troubleshoot** .



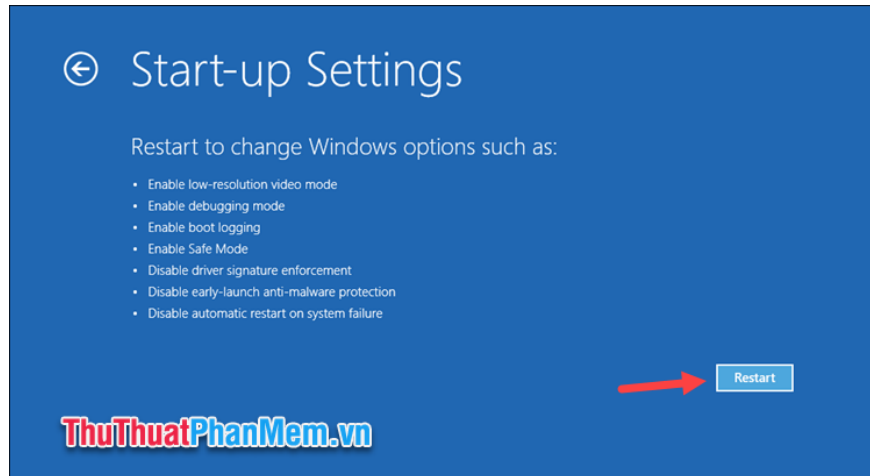
Step 3 : Choose Advanced options.



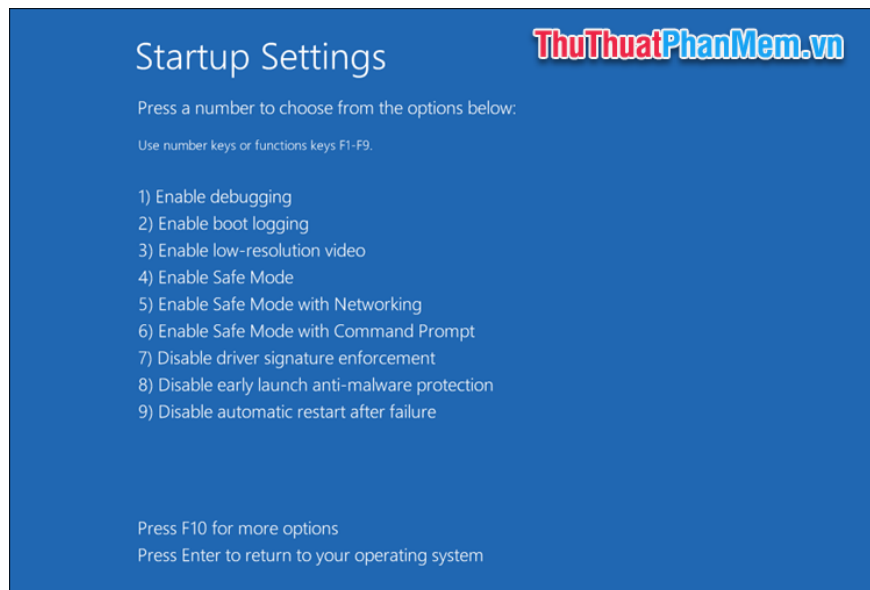
Step 4: Select Startup Settings .



Then select **Restart**



Step 5 : After the computer restarts We have the following safe mode options:



F4: Enable Safe Mode : Start Windows with a minimal set of drivers and services.

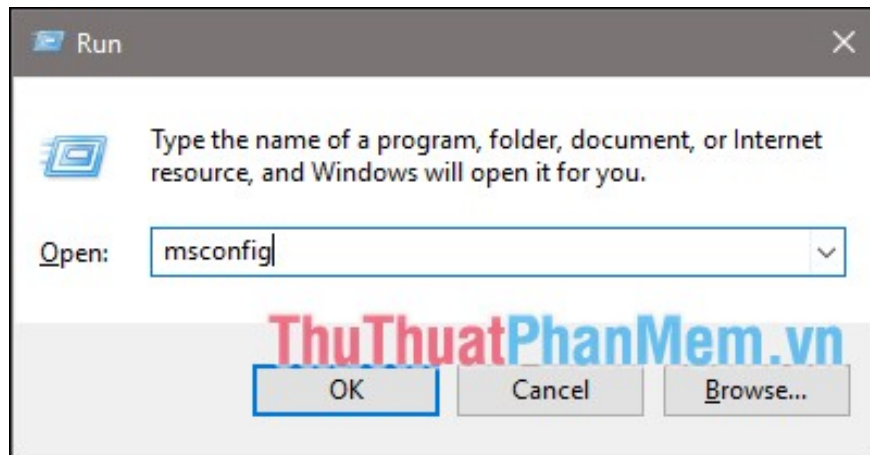
F5: Enable Safe Mode with Networking : Start Windows in safe mode and include the network drivers and services needed to access the Internet or other computers on your network.

F6: Enable Safe Mode with Command Prompt : Start Windows in safe mode with a Command Prompt window instead of the normal Windows interface. This option is for IT professionals and system administrators.

You choose 1 of the 3 options above and the machine will boot into safe mode.

2. The second way into safe mode is via 'System configuration'.

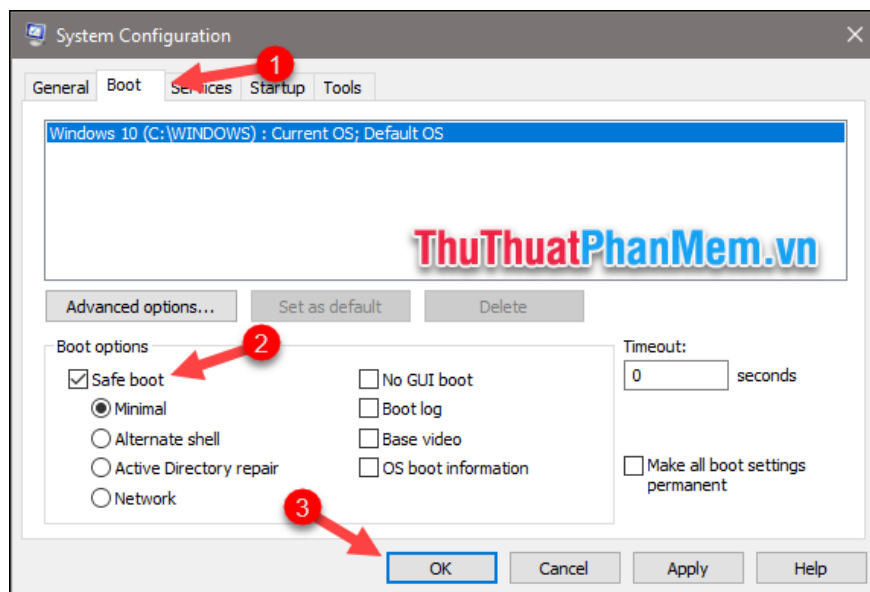
Step 1: Press the **Windows + R** key combination to open the **Run** dialog box, then type the command '**msconfig**' and press **Enter** .



Step 2: In the System Configuration dialog box, select the **Boot** tab then in the **Boot options** section, select **Safe boot** and 1 of the options:

1. **Minimal** : Enter normal safe mode with minimum software and hardware
2. **Alternate shell** : Safe mode with Command Prompt window
3. **Network** : Enter Safe mode to connect to Internet

Then click **OK** .



A dialog box appears, select **Restart** for the computer to boot into safe mode.

Note: When in safe mode and then if you want to exit safe mode, then you do the same but in step 2 you uncheck the **Safe boot** box and then click **Ok** and **Restart** the computer.

Another way is when you turn on the computer and when the computer is on the black screen you first press **F8** to enter **Safe mode**. This method is used when you cannot access the windows. Above is an instruction on how to

enter Safe mode on Windows 10, hope you will find the article helpful, wish you success!

You finished reading the article "**How to enter Safe Mode on Windows 10**" edited by the [TipsMake](#) team. We hope this article has provided you with many useful tech tips and tricks. You can search for similar articles on tips and guides. Thank you for reading and for following us regularly.