

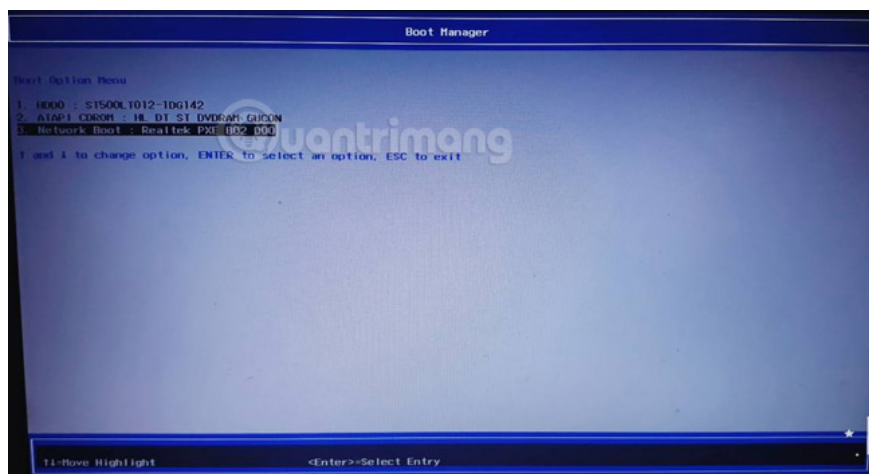
# How to enter BIOS (UEFI) on Windows 10, how to fix the error of not being able to enter BIOS Win 10

Instructions on how to enter BIOS on Windows 10 for you, with video demonstration.

Windows 10 gives users a lot of options to configure directly from within the operating system, but on most computers there are settings that can only be changed in the BIOS (basic input/output system). BIOS is software built into a computer's motherboard and controls everything from the drive's boot sequence to pre-boot security options, Fn keys, etc.

Because BIOS is a pre-boot environment, users cannot access BIOS directly from within Windows. With older operating systems you can enter the BIOS by pressing a certain key like F2, F12, Del when restarting the computer, but on Windows 10 it will be a bit more complicated. In this article, TipsMake.com will show you how to enter the BIOS on Windows 10 or access the UEFI settings, accompanied by a video demonstration.

**Note:** If you just choose to boot from USB on Windows 10, when you restart the computer, press the key combination to enter the BIOS as usual, Windows 10 will display options for you to change the boot type, Press the arrow keys to move to the boot type you need and press Enter to select.

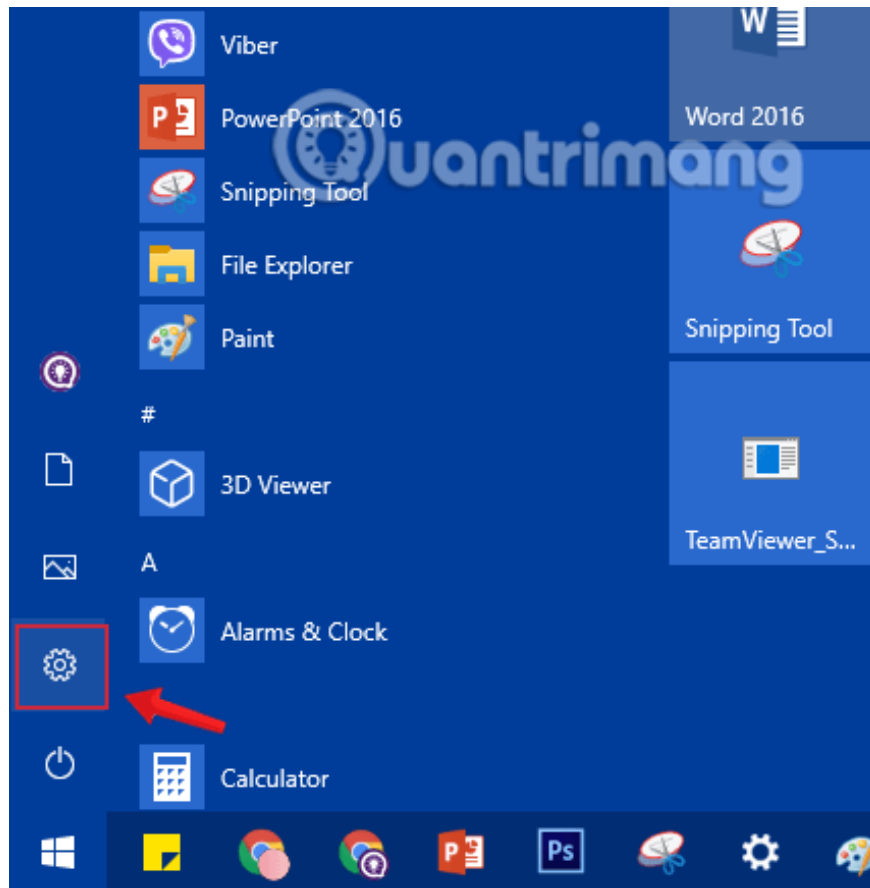


In this picture, I am using an Acer computer, Windows 10 Fall Creators Update. When restarting, press F12 to enter the boot options. Because it is not connected to any USB boot, you do not see the option to boot from USB.

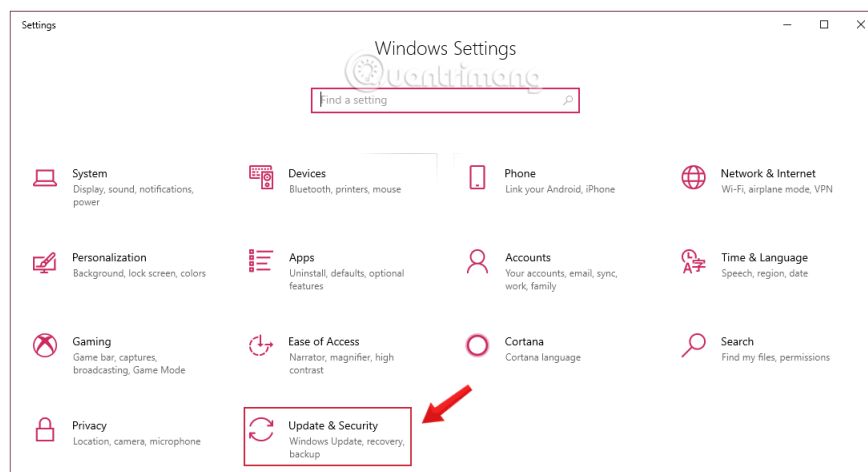
## 1. How to enter Windows 10 BIOS using Settings

**Step 1:** Save all activities and close all running programs on your Windows 10 computer.

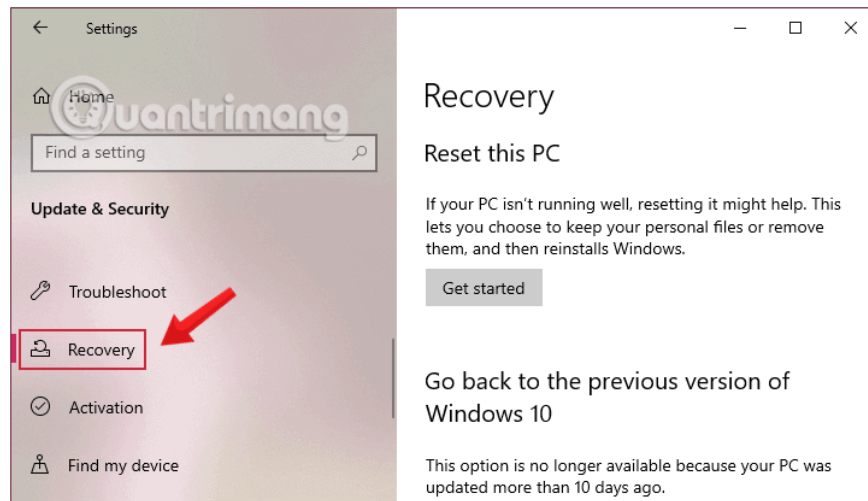
**Step 2:** Open the Settings application by clicking the **Settings icon on the Start menu** or pressing the + key combination **.WindowsI**



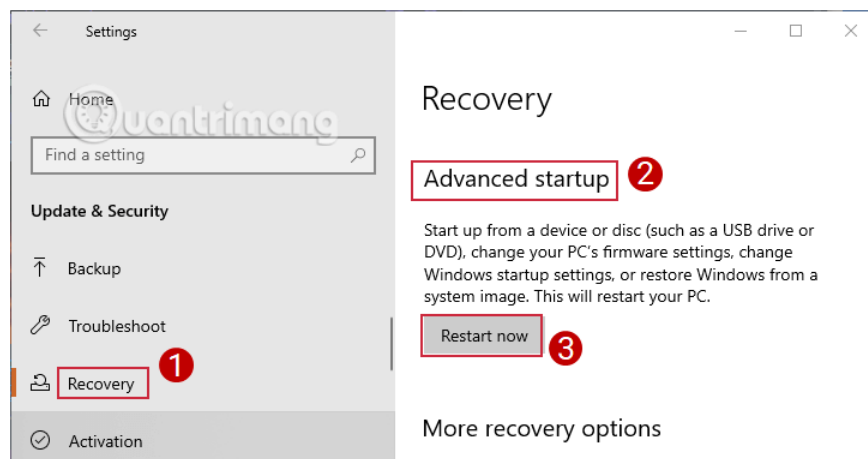
**Step 3:** On the Settings interface, click **Update & security**.



**Step 4:** Under **Update & security**, click **Recovery** from the left pane of the window.

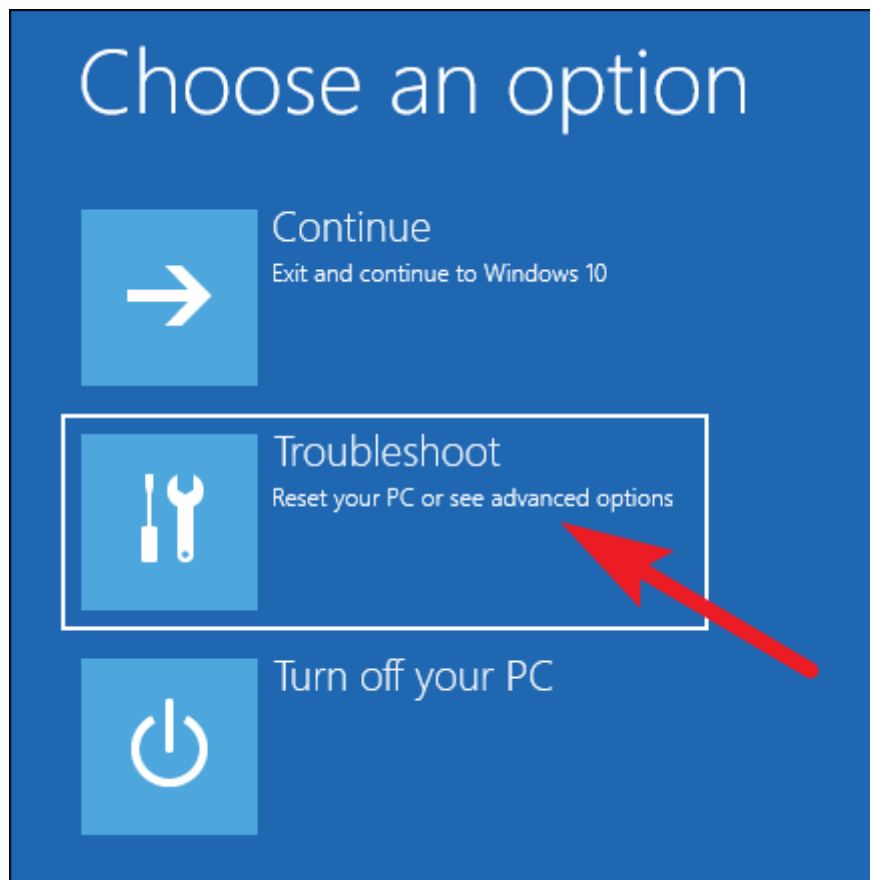


**Step 5 :** Next, in the right pane of the window, click **Restart now** in the **Advanced startup** section.

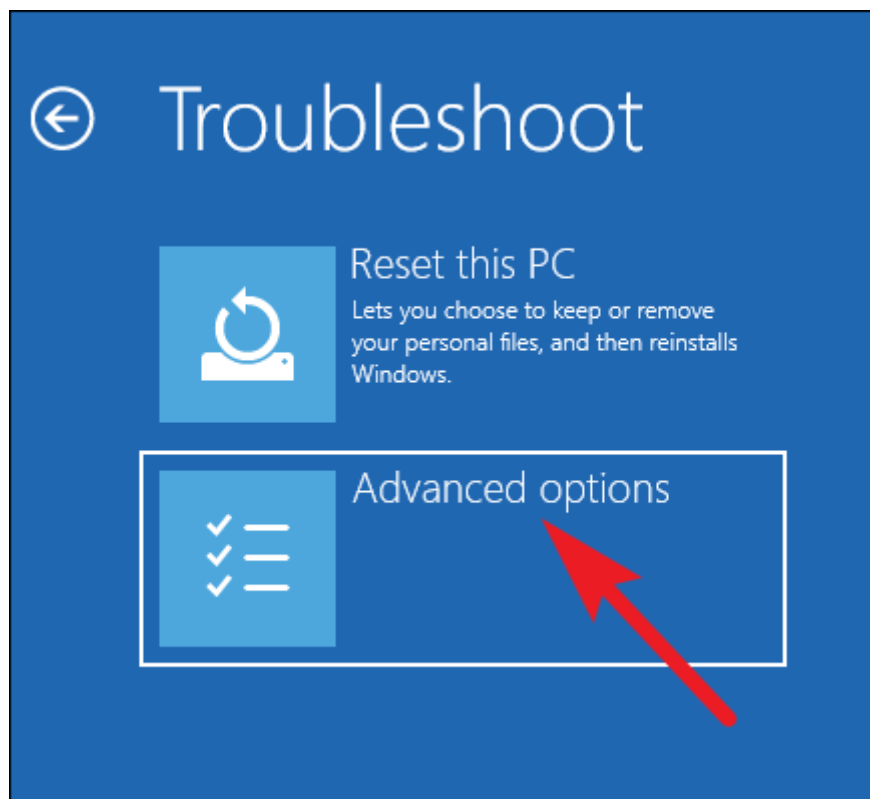


Your computer will now restart.

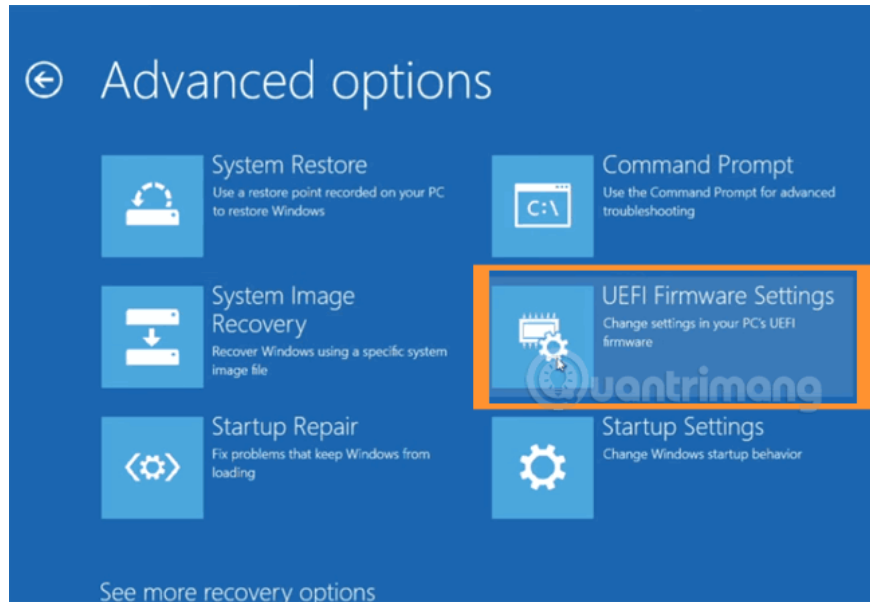
**Step 6:** After your computer has restarted, you will see the Choose an option screen appear, where you click **Troubleshoot**.



**Step 7:** On the Troubleshoot screen, click **Advanced options** to access the **Advanced Startup Options** option.

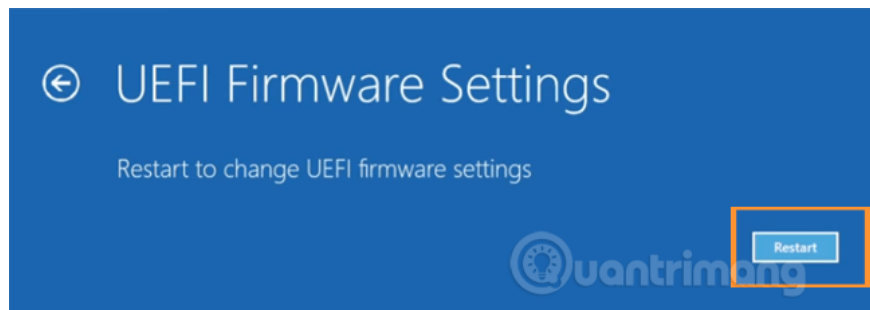


**Step 8:** When the **Advanced options** screen appears , click **UEFI Firmware Settings** .

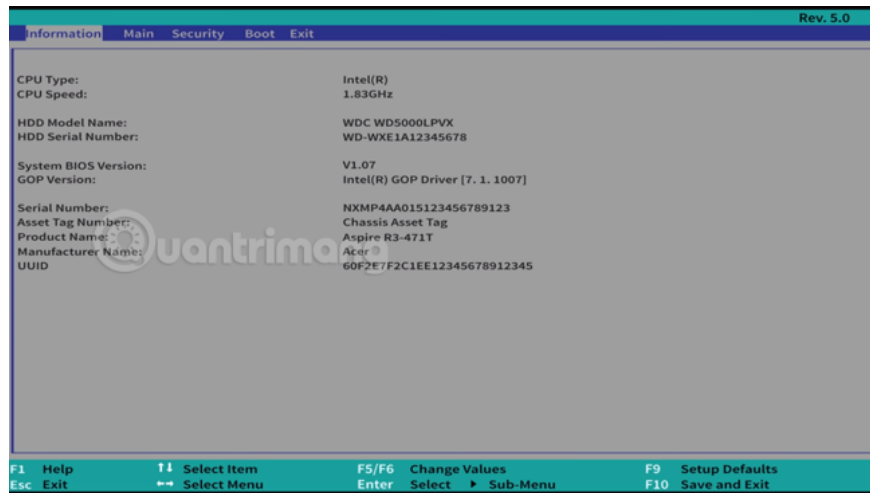


**Note:** If the UEFI Firmware Settings option does not appear, it means your computer does not support UEFI.

**Step 9:** Finally, when the UEFI Firmware Settings screen appears, accompanied by the message '**Restart to change UEFI firmware settings**' , click **Restart** to restart your computer and access the UEFI firmware settings.



**Step 10:** The computer will reboot and take you into the Windows 10 BIOS.

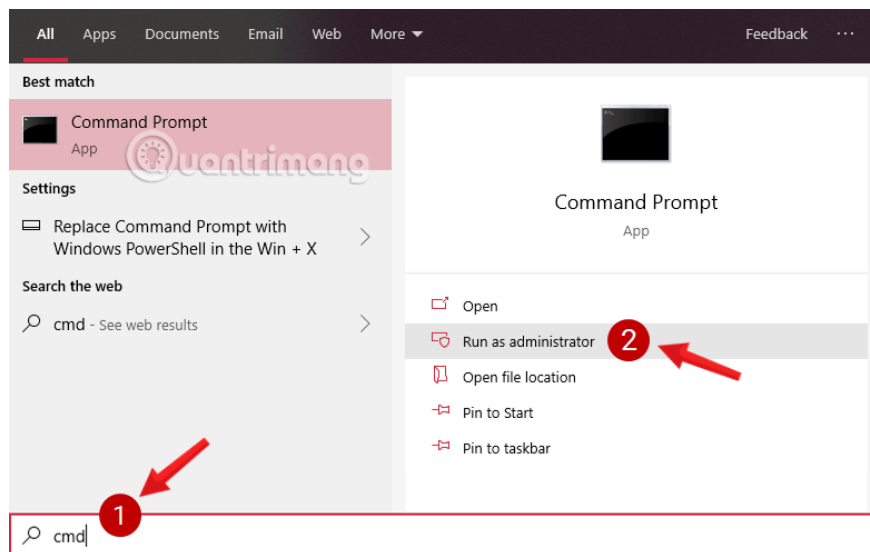


Video tutorial on accessing UEFI settings on Windows 10

Here, you can change the settings you need and view basic computer information.

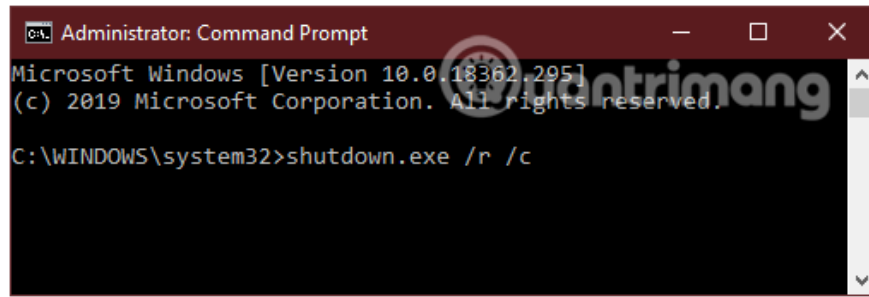
## 2. Access UEFI firmware settings using Command Prompt

**Step 1:** Open Command Prompt under Admin.



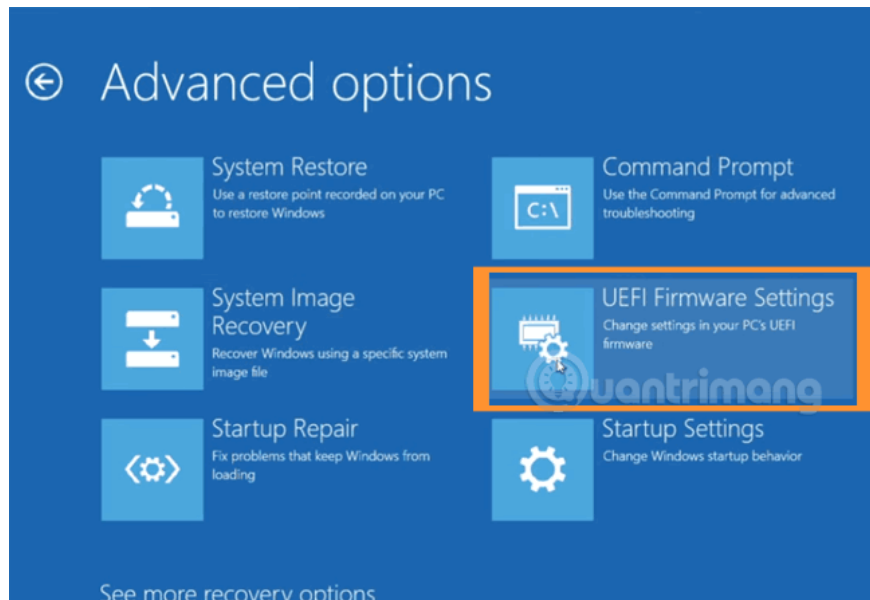
**Step 2:** On the Command Prompt window, enter the command below and press Enter:

```
shutdown.exe /r /o
```



You will see a message showing that you are signing out. **You are about to be signed off** , **Close** the message and wait a moment, Windows 10 will reboot into the **Advanced Startup Options** menu .

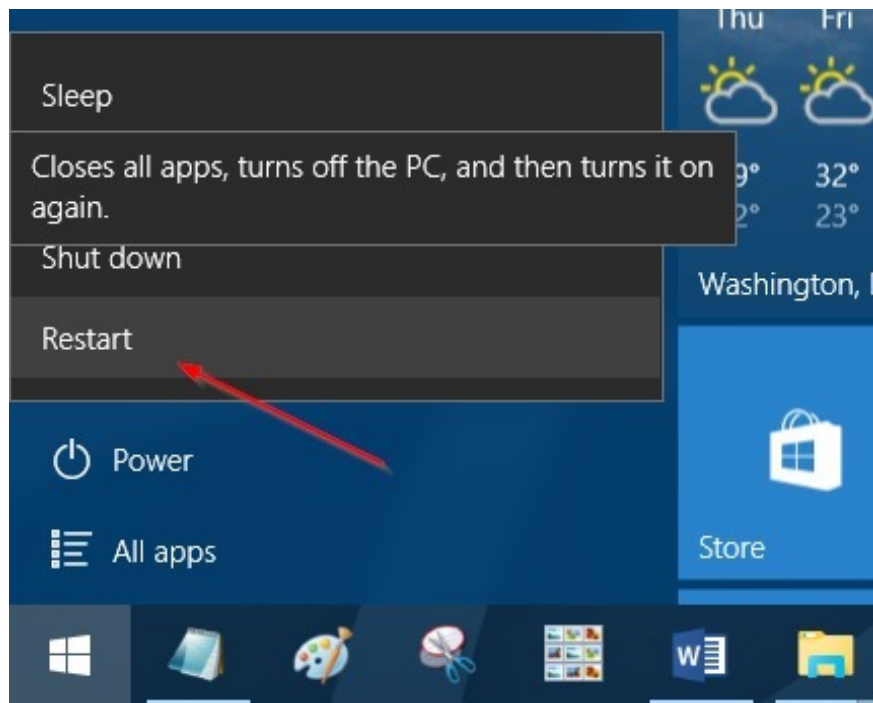
**Step 3:** Do the same as the end of method 1 to access UEFI settings.



### 3. Open BIOS/ UEFI from Windows 10 Desktop

**Step 1:** Open Start Menu, then click the **Power button**.

**Step 2:** Press and hold the **Shift** key , then click **Restart** to restart your computer. You will now see the **Choose an options screen**.



**Step 3:** On the **Choose an option** screen, click **Troubleshoot** to open the **Troubleshoot** screen and go to the **Advanced Startup Options** menu.

**Step 4:** Do the same as the end of method 1 to access UEFI settings.

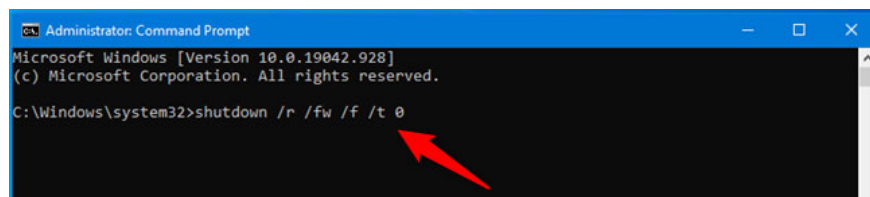
## 4. How to enter UEFI BIOS using shortcut or command

You can access UEFI BIOS in Windows 10 using a variety of methods. However, one of the fastest ways may be to run a fairly simple command.

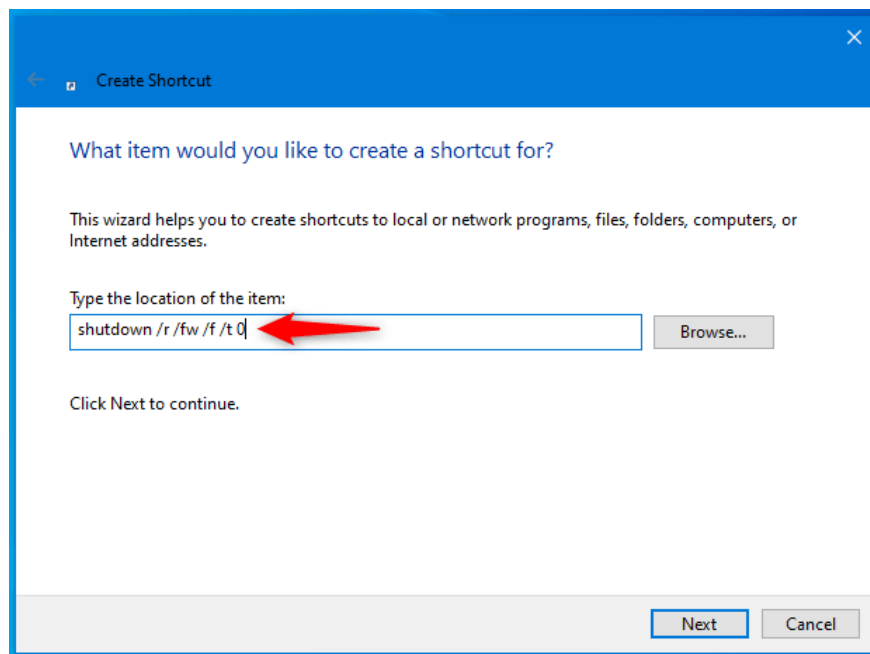
Open CMD with admin rights, type the following command and press **Enter** on the keyboard:

```
shutdown /r /fw /f /t 0
```

This will immediately reboot your Windows 10 PC and then access your computer's UEFI BIOS.



If you like this command but want to run it even faster, you can create a Windows 10 BIOS shortcut. When you do that, make sure you specify the correct command (shutdown /r /fw /f /t 0) in the shortcut's location field, as shown below.



If you want something even easier, you can simply download the Windows 10 BIOS shortcut that the article created for you, called UEFI BIOS (restart Windows 10 and enter UEFI BIOS). Download this ZIP file, extract its contents and you will find the shortcut in it.

Double click on the shortcut and your Windows 10 PC or device will reboot and open its UEFI BIOS interface, after you press **Yes** the UAC prompt will be displayed.

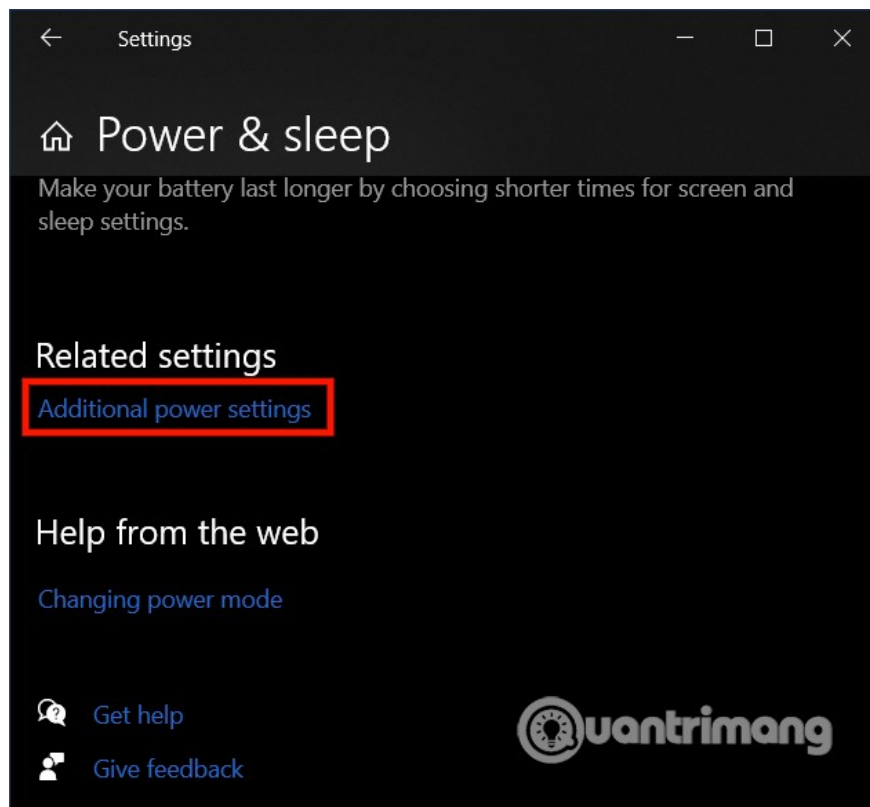
## 5. How to fix the error of not being able to access BIOS on Windows 10

In fact, some of you have used all three methods above and still cannot access the BIOS on Windows 10. Then, it is likely that your computer has a problem. To fix it, do the following:

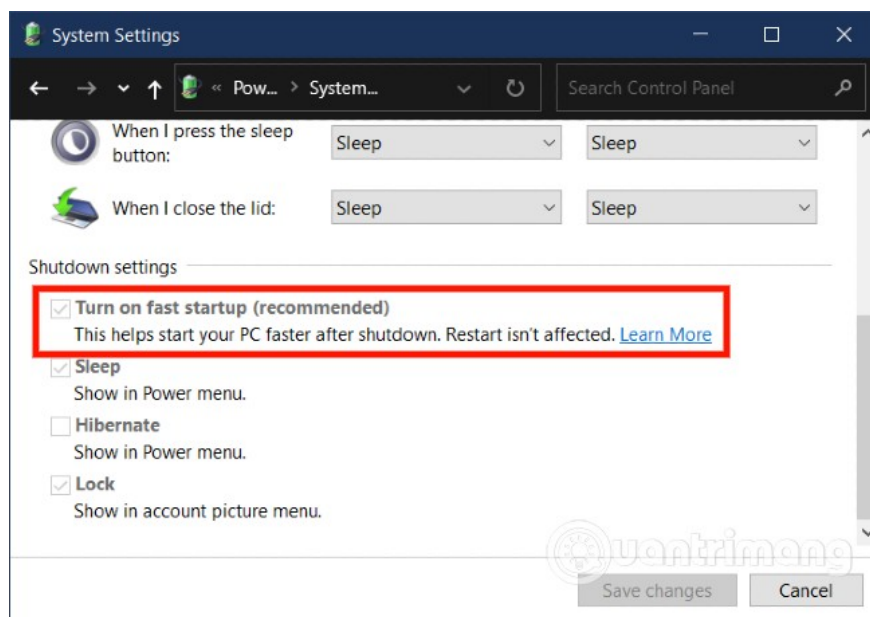
### Method 1: Turn off the Fast Startup feature

To turn off Fast Startup, follow these steps:

1. Press **Windows + I** to open Settings then go to **System > Power & sleep**
2. Scroll down and click **Additional power settings**



1. In the new Power Options window that appears, select **Choose what the power buttons do**
2. A new window appears and you scroll down to uncheck the **Turn on fast startup** box
3. Click **Save changes**

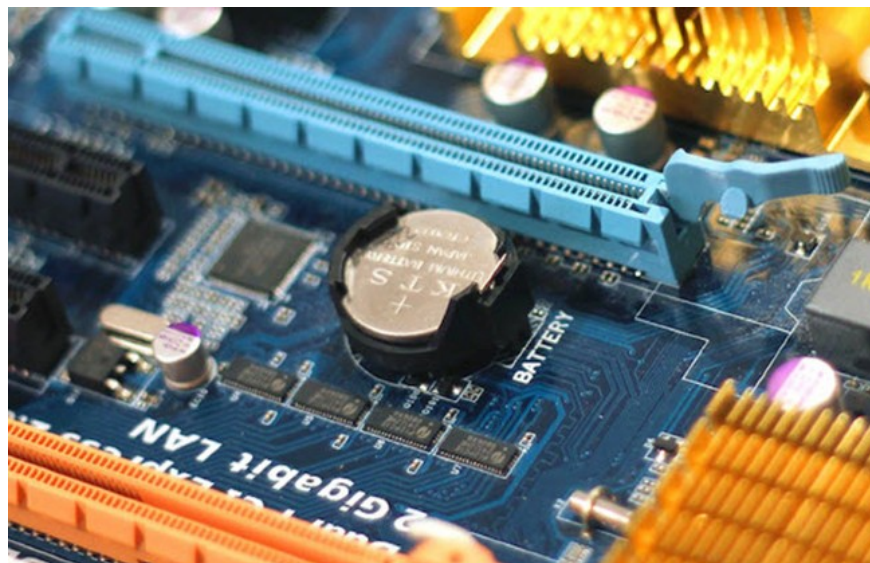


1. Please restart your computer and try to see if you can enter the BIOS. If not, please try the second method

## Method 2: Reset CMOS

If you cannot access the BIOS, follow these steps to reset the CMOS settings. You will need to do a few hardware tricks.

1. Turn off all peripheral devices connected to the computer
2. Disconnect power from the computer
3. Open the computer lid
4. Find the battery (flat round shape) on the motherboard
5. Remove the battery from the motherboard
6. Wait about an hour then reinsert the battery
7. Close the computer lid
8. Connect the power source and peripheral devices to the computer



Now, you can try to see if you can enter the BIOS or not. Most users can access the BIOS successfully after resetting the CMOS. After entering the BIOS, you should reset the BIOS settings to remove problems that previously prevented you from accessing it.

Hope the article is useful to you.

You finished reading the article "**How to enter BIOS (UEFI) on Windows 10, how to fix the error of not being able to enter BIOS Win 10**" edited by the [TipsMake](#) team. We hope this article has provided you with many useful tech tips and tricks. You can search for similar articles on tips and guides. Thank you for reading and for following us regularly.