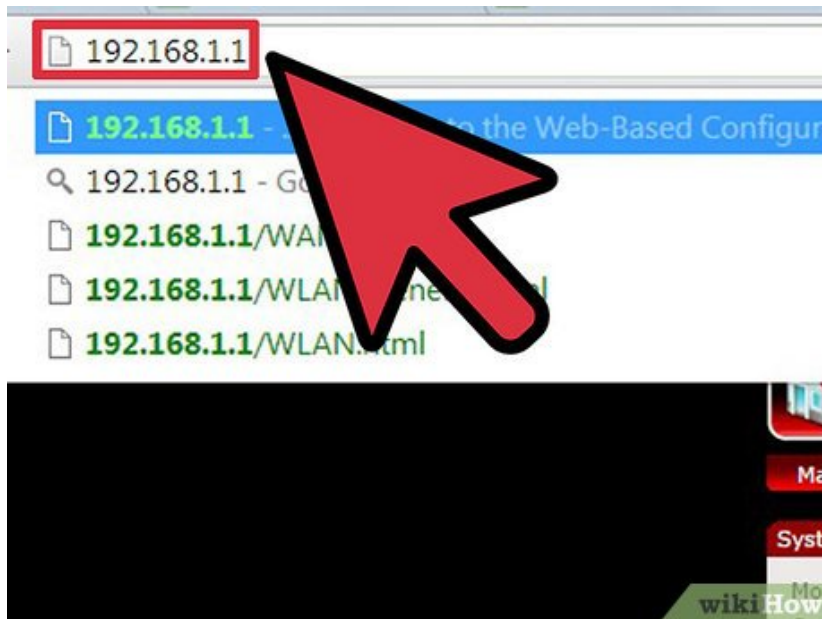


How to Encrypt Wireless

Anyone with a computer that is capable of accessing the Internet wirelessly can access an unprotected, unencrypted wireless network. This is potentially dangerous for the network's owner because anonymous users can gain access to personal...

Method 1 of 2:

Setting up WEP



Log on to the computer directly connected to your wireless router.

2.



Consult the documents that came with your router to determine the web address to the admin page.

3.



Open your web browser and access the admin page for your router. The address typically resembles this format: 83.223.X.XXX.



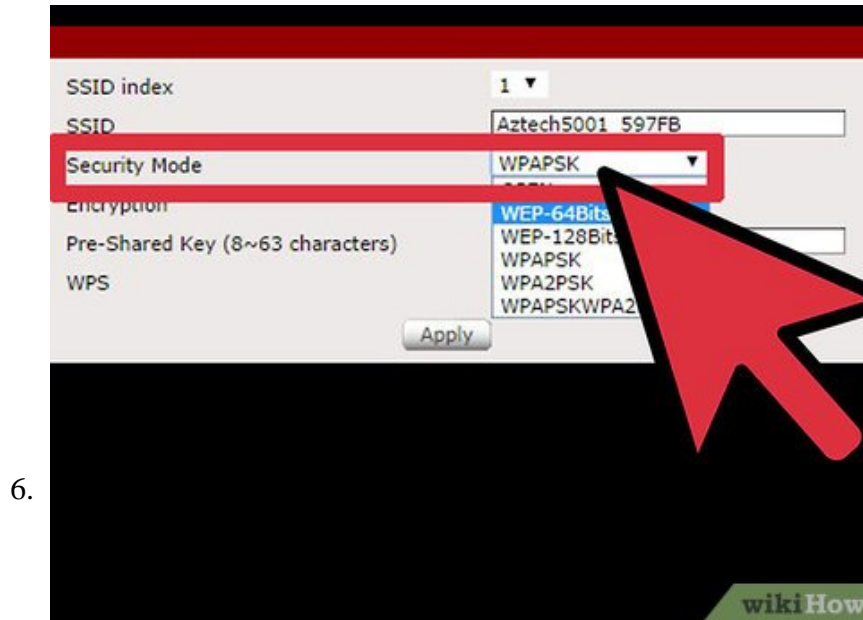
Enter your username and password.

1. If you have yet to set up a wireless password, you should do so before continuing. This can be completed on the control panel for your router as well as on the admin page.

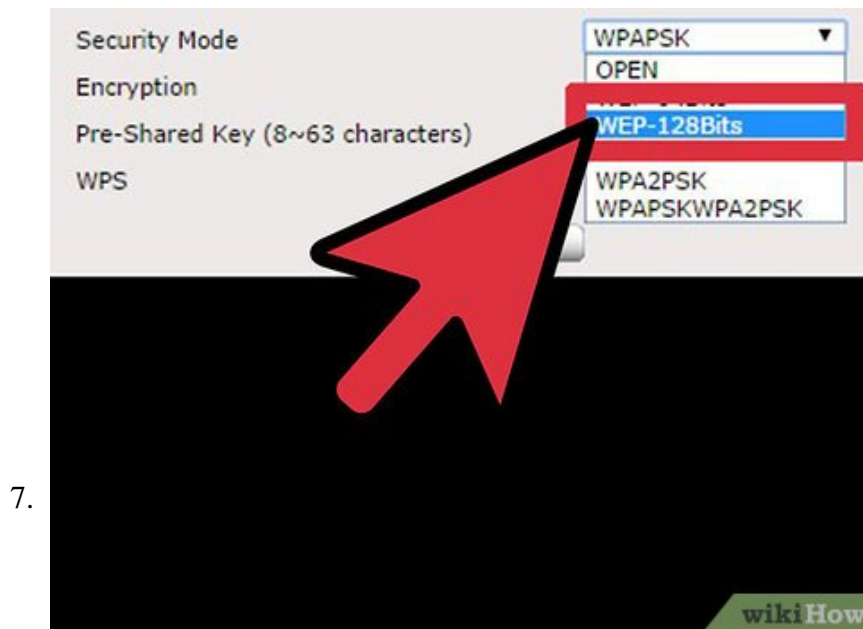


Browse the admin page for the wireless settings tab.

1. Depending on the brand and model of wireless router you are using, the web page will look differently.

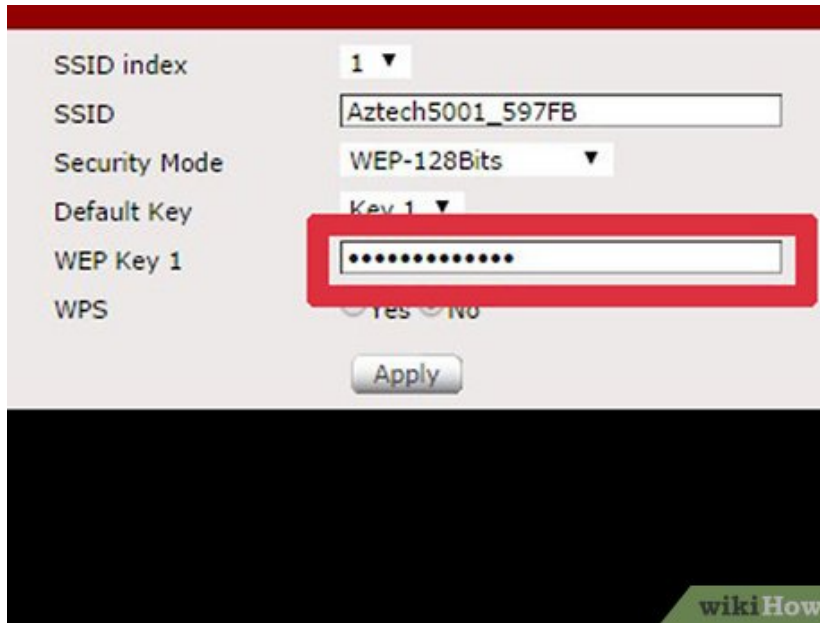


Choose WEP from the settings.

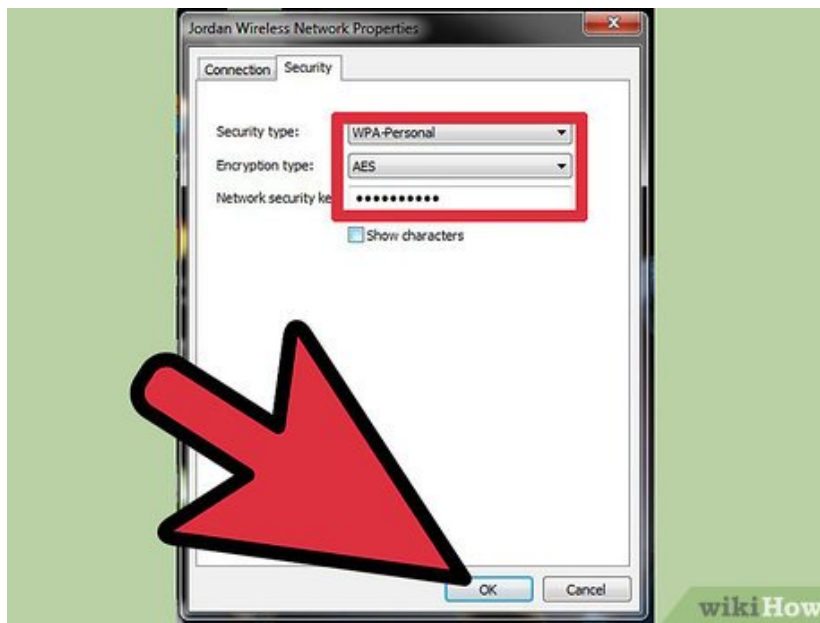


Select the 128-bit encryption over the 64-bit.

1. The higher number of encryption, the harder it is for someone to break in. Choosing 128-bit has the potential to slow down your Internet access, however.



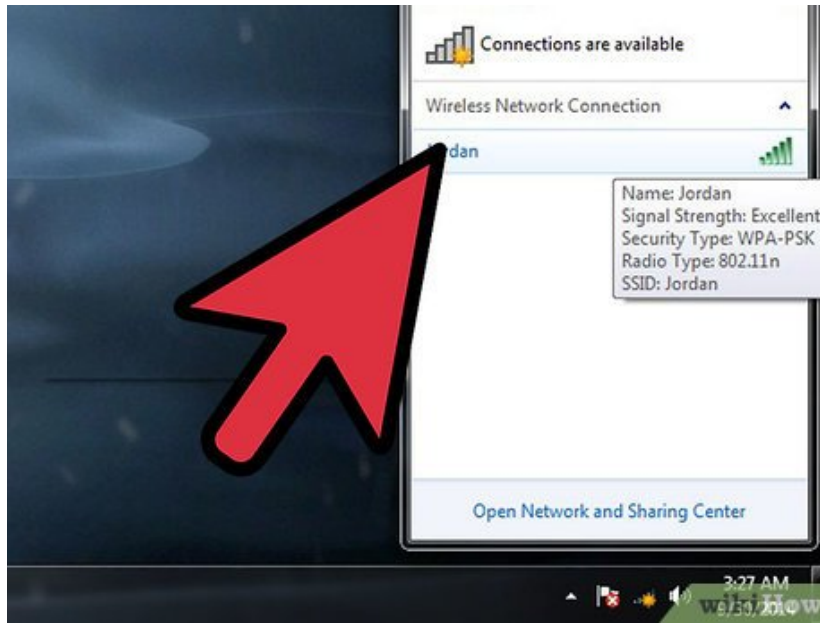
Enter a key or password composed of random numbers and letters.



Go to network settings to set up your main computer as such so you do not have to enter this encryption key each time you connect to the Internet.

1. Select properties of your wireless network. Fill in your information and continue to follow the prompts. You will need to enter the key after choosing WEP from a dropdown menu.

10.



Repeat this for other computers in your home.

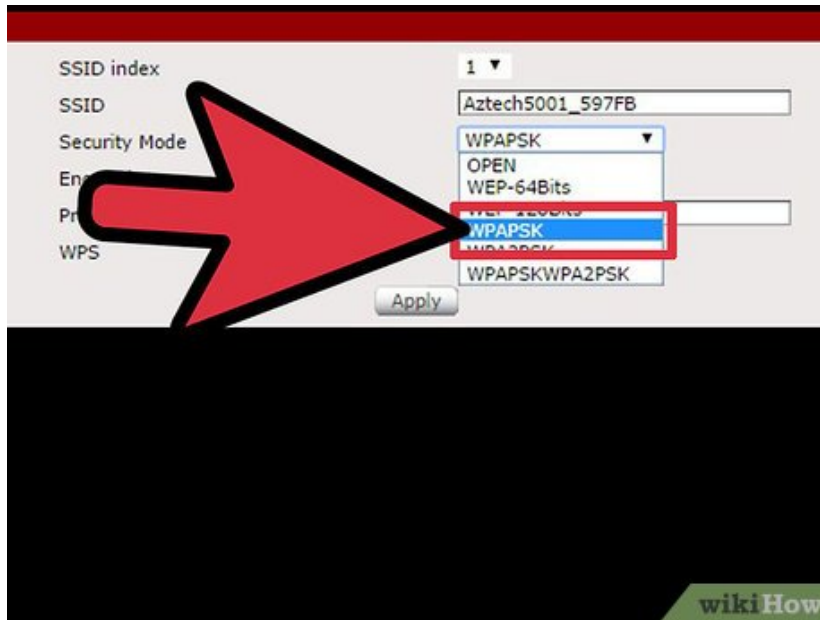
Method 2 of 2:

Setting up WPA

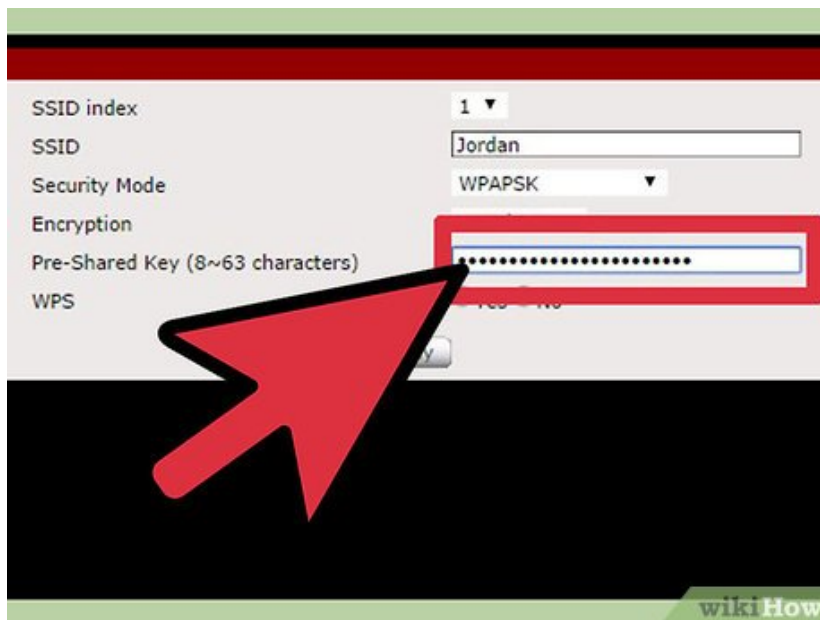
1.



Follow the same initial process as you would for setting up a WEP encryption.



Select WPA-PSK instead of WEP from the admin page.



Choose your level of encryption.

1. Encryption with WPA is stronger than WEP and harder to breach, so your key will be comprised of more characters than with WEP.

You finished reading the article "**How to Encrypt Wireless**" edited by the [TipsMake](#) team. We hope this article has provided you with many useful tech tips and tricks. You can search for similar articles on tips and guides. Thank you for reading and for following us regularly.