

How to enable/disable Smart Lock on Android

The Smart Lock feature keeps your phone unlocked when connected to a trusted device or in familiar territory.

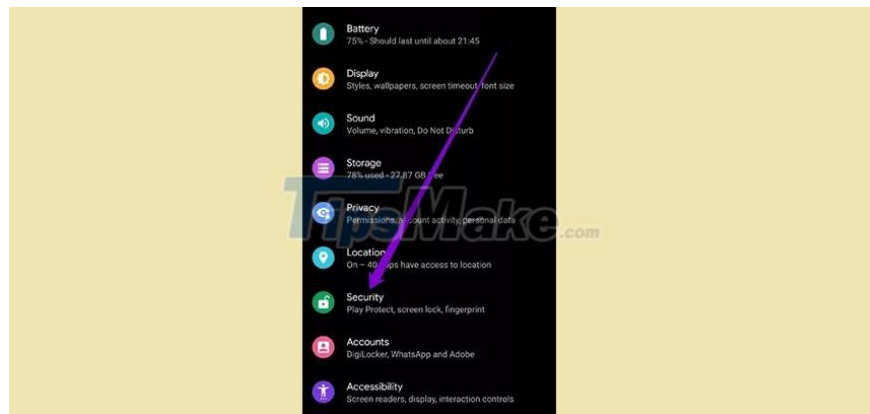
Unlocking your phone is faster than ever with an ultra-fast fingerprint sensor and feature-rich Face ID. It's convenient, but sometimes unlocking your phone just to open an app doesn't seem necessary, especially when you're at home or when you use it often. That's where enabling Smart Lock on Android can help.

The Smart Lock feature keeps your phone unlocked when connected to a trusted device or in familiar territory. There are several different versions of Smart Lock on Android, and TipsMake.com will guide you through all of them.

How to enable/disable On-body Detection in Android Smart Lock

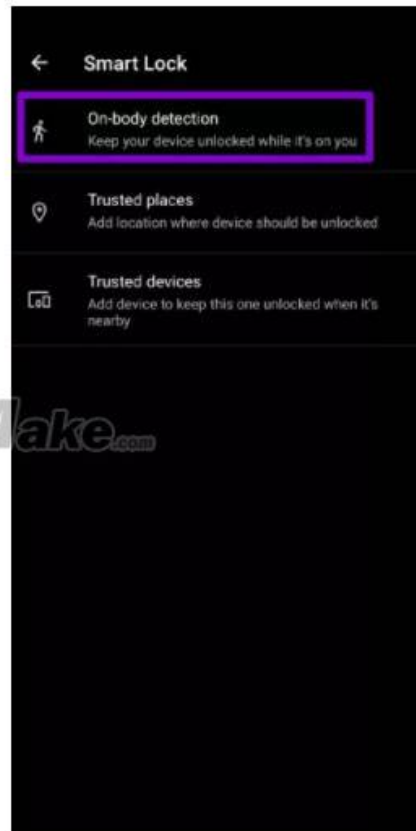
Enabling On-body Detection Smart Lock will keep your device unlocked as long as you're holding it in your hand. After placing the device on a stable surface, it will automatically lock.

Step 1: Launch the Settings app on Android and navigate to Security.

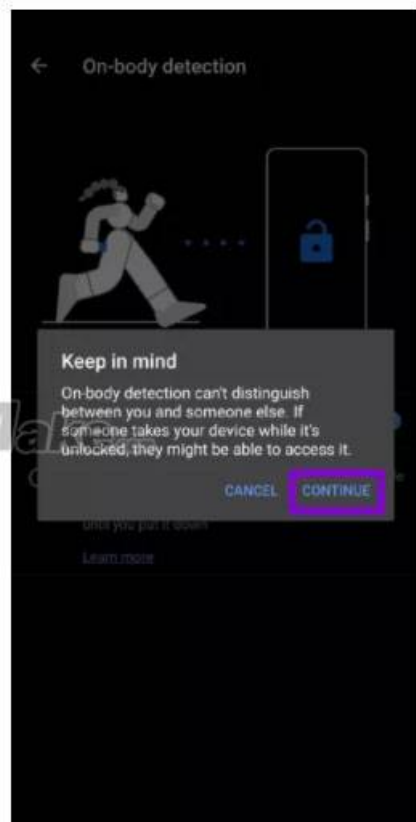
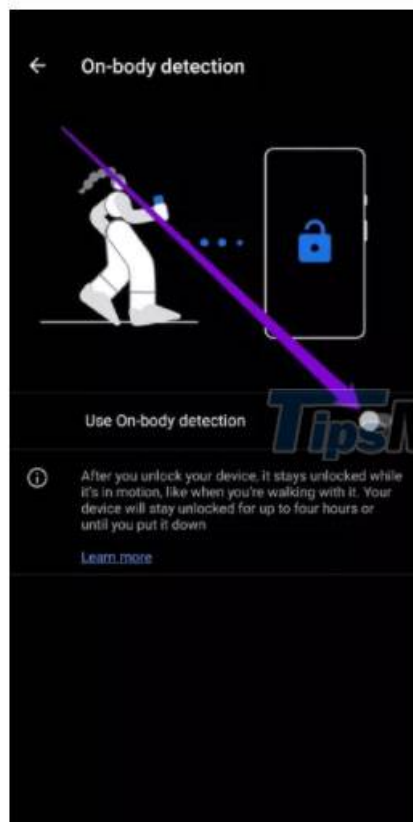


Step 2: In Device Security, click on Smart Lock option. Next, enter the device PIN

Once verified, you will see all available Smart Lock options. Click On-body detection to enable this option.



Step 3: Next, turn on the switch next to Use On-body detection. On the confirmation box, click Continue to continue.



Once enabled, your device will stay unlocked for up to 4 hours as long as it detects any movement like running, walking, strolling, etc.

However, it cannot distinguish between you and others in any way. So if someone touches your device while it's unlocked, they can easily use it. To disable this feature, access the On-body Detection option again by following the steps above and turning off the switch next to it.

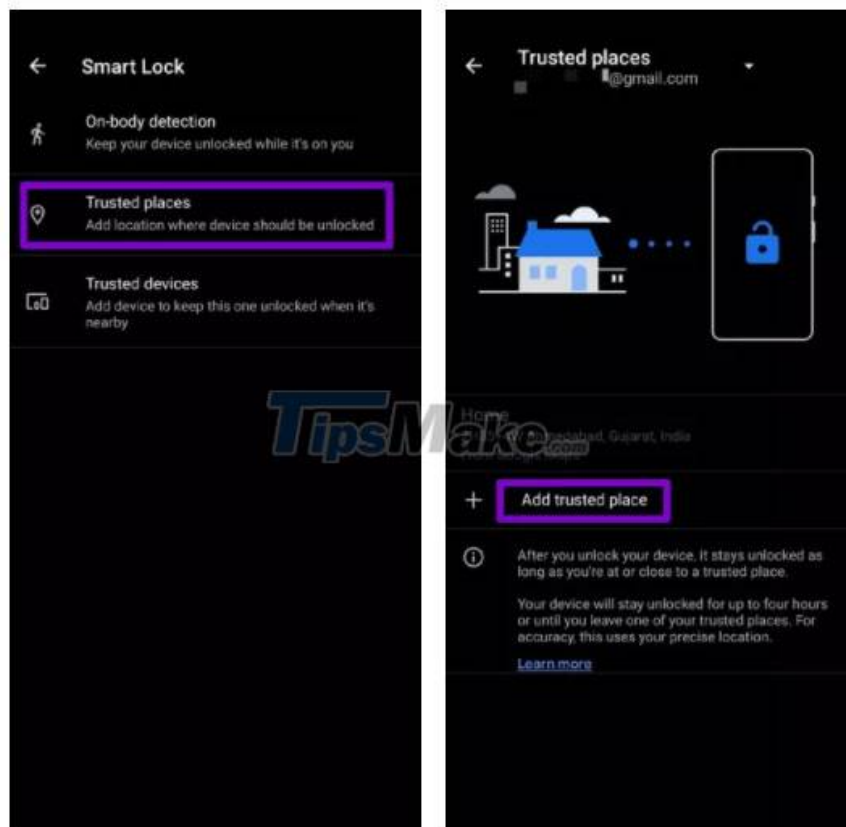
How to add/remove trusted places in Smart Lock

If you spend most of your time working from home or at the office, it can be frustrating to unlock your phone every time you check something. You can add trusted places like your home or office where your phone will always stay unlocked to fix that.

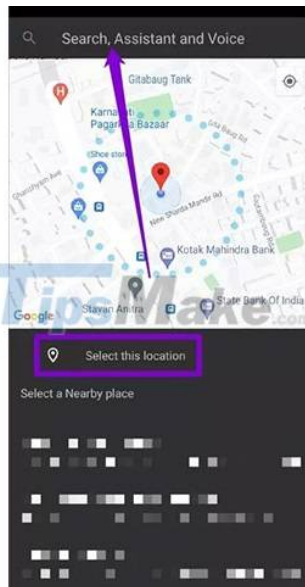
Step 1: Launch the Settings app on Android and navigate to Security.

Step 2: In Device Security, click on Smart Lock option. Next, enter the device PIN if you have it activated.

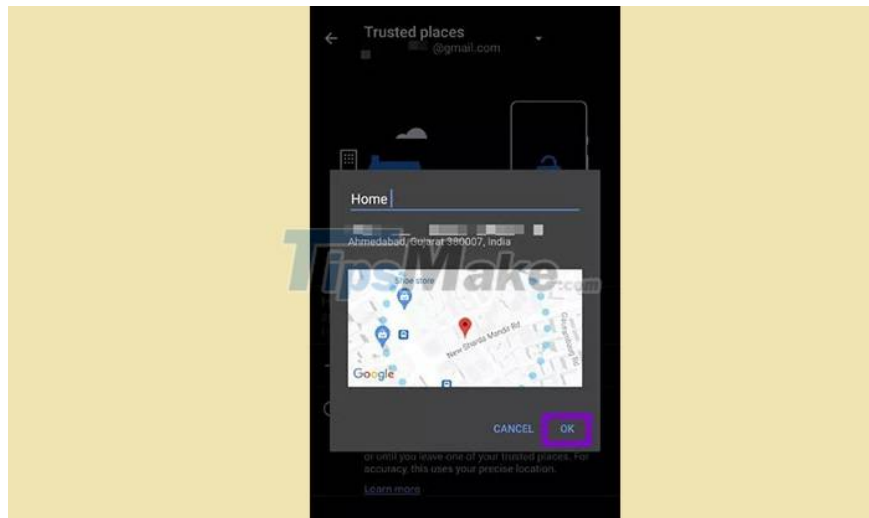
Step 3: Click the Add trusted place option to enter the locations where your device will always be unlocked.



Step 4: Here you can use the search bar at the top to search for a specific place you want to add. Or else, you can also manually navigate through the map to pinpoint a specific location. Finally, tap the Select this location option to save it.



Step 5: Give the trusted place a suitable name and click OK.



Similarly, you can add more trusted places if you want. Once you unlock your device, it will stay unlocked for up to 4 hours as long as you're near a trusted location. Please note that you will need to enable GPS on your phone for this feature to work.

If you want to disable trusted places in Android Smart Lock, open Smart Lock settings on Android, tap on Trusted Places entered by you and select Delete option.



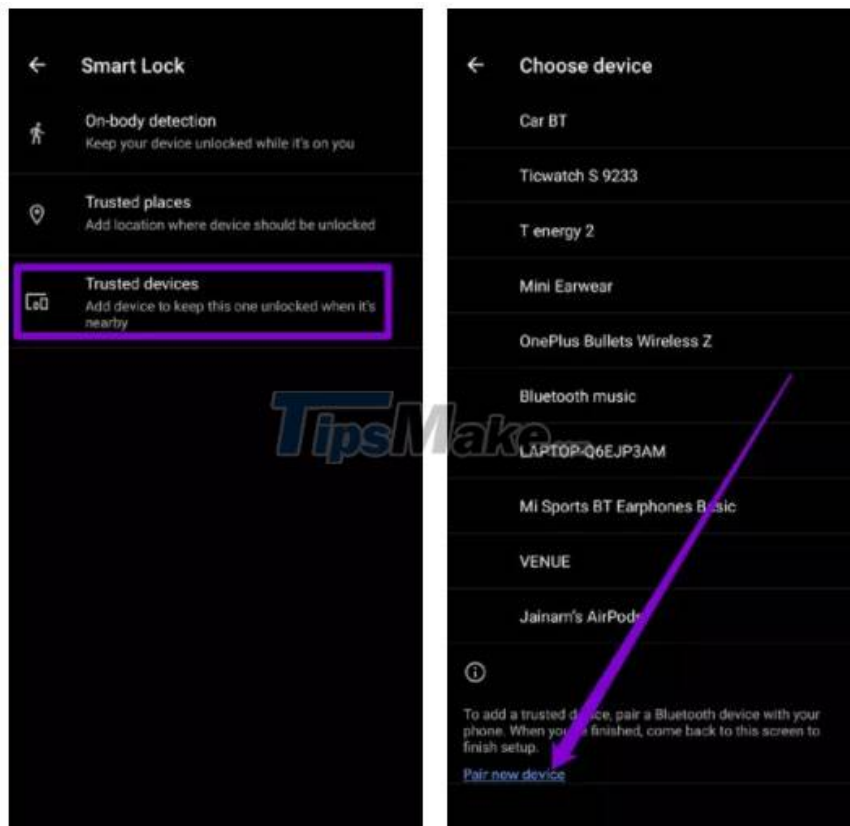
How to add/remove trusted devices in Smart Lock

Enabling this feature will keep your device unlocked as long as your phone is connected to a Bluetooth device such as a smartwatch, Bluetooth headset, or car entertainment system.

Step 1: Launch the Settings app on Android and navigate to Security.

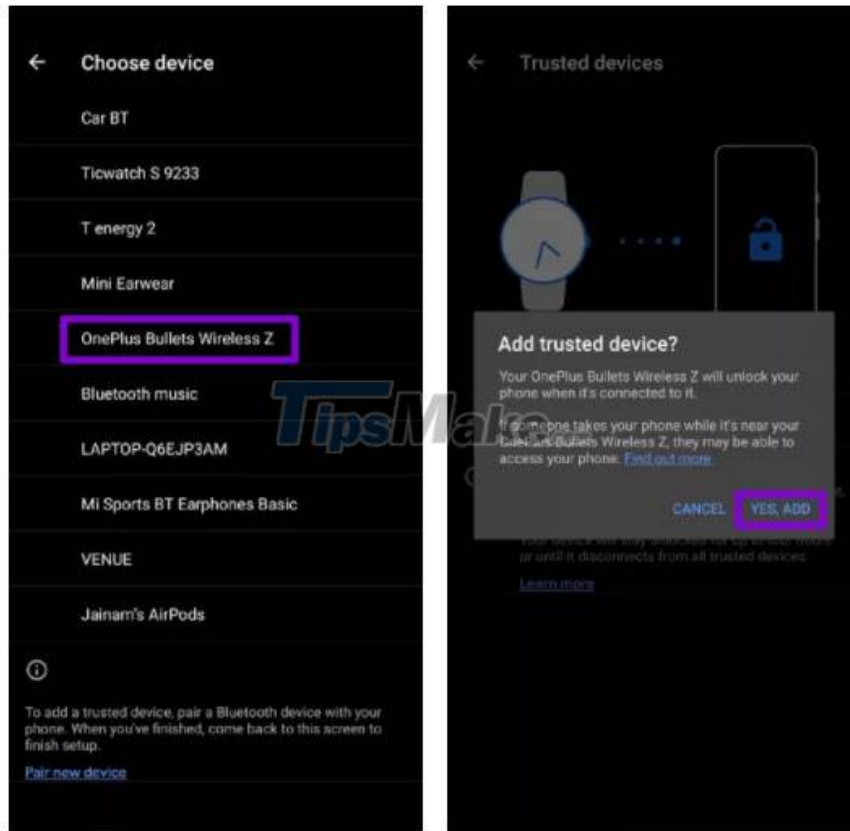
Step 2: Next, tap on the Smart Lock option and enter your device PIN to verify your identity.

Step 3: Click on the Add trusted device option and you will see a list of Bluetooth devices added to your phone.



NOTE: If you want to add a new device, which is not in the list, tap the Pair new device option to connect to that device first.

Step 4: Select a Bluetooth device to add it as a trusted device. Select Yes, Add when prompted.



If you want to disable trusted devices from unlocking your phone, open Smart Lock settings on Android, tap on the trusted device entered by you, and select the Remove Trusted Device option.



Smart Lock is definitely a convenient feature for people who are always with people they trust and don't necessarily always lock their phones.

You finished reading the article "**How to enable/disable Smart Lock on Android**" edited by the [TipsMake](#) team. We hope this article has provided you with many useful tech tips and tricks. You can search for similar articles on tips and guides. Thank you for reading and for following us regularly.
