

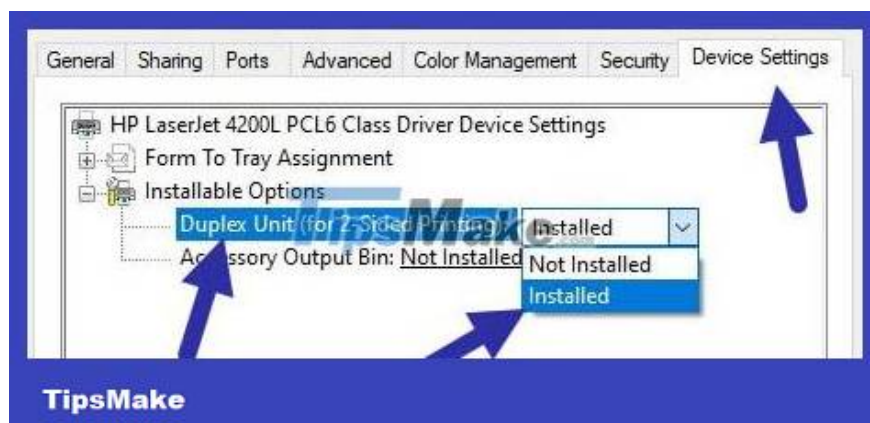
How to enable two-sided printing on Windows

To print on both sides of the paper, you need to install a duplex module. Below are the steps to enable duplex printing in Windows 10.

Steps to enable duplex printing in Windows

To enable duplex printing in Windows 10, follow the steps below.

1. Click the **Notifications** icon on the taskbar. You can find it in the bottom right corner of the screen.
2. Now, click the **All Settings** button to open **Settings**.
3. After opening the Settings app, go to the **Devices page**.
4. Select the **Printers & Scanners** page on the left panel.
5. Click the default printer and click the **Manage button**.
6. Select the **Printing Properties** link from the list of options.
7. Go to the **Device Settings** tab
8. In the *Duplex Unit* section, select the **Installed** option



9. Click **OK** to save the changes.
10. Close the Properties window .
11. Close the Settings application .

From now on, you will be able to print on both sides of the paper thanks to the duplex feature.

Important note

If you cannot see the duplex printing option in the **Printer Properties** window , your printer may not support this option or the driver may need to be updated. If it's a driver issue, try the steps again after updating the driver.

Depending on your printer and its driver, the duplex printing option may be in another tab or option. So, take a look at all the tabs if you cannot find the duplex printing option as shown in the steps above.

To print on both sides of the paper, you need to select the duplex printing option while sending print instructions. Generally, the option will be available in the advanced options section of the print dialog box.

You finished reading the article "**How to enable two-sided printing on Windows**" edited by the [TipsMake](#) team. We hope this article has provided you with many useful tech tips and tricks. You can search for similar articles on tips and guides. Thank you for reading and for following us regularly.