

# How to enable Super Duper security mode in Microsoft Edge

Microsoft has mentioned many times that they are trying to make Edge a platform with its own mark, in order to get out of Chrome's too big shadow.

Over the past few months, we have seen the birth of many new utilities added to Edge with the aim of giving users a more distinctive experience, 'Super Duper Secure Mode' being an example.

This article will show you how to enable and use Super Duper security mode in Microsoft Edge

## What is Super Duper Secure Mode?

Super Duper Secure Mode, or Super Duper security mode, is a feature that can bring significant security improvements to Microsoft Edge without affecting overall browser performance.

Specifically, Microsoft's security team has found that the V8 JavaScript engine is the culprit leading to many security vulnerabilities. The JavaScript engine uses 'Just-In-Time Compilation' (JIT) to help speed up JavaScript code on web pages, but it opens up a few holes in the browser.

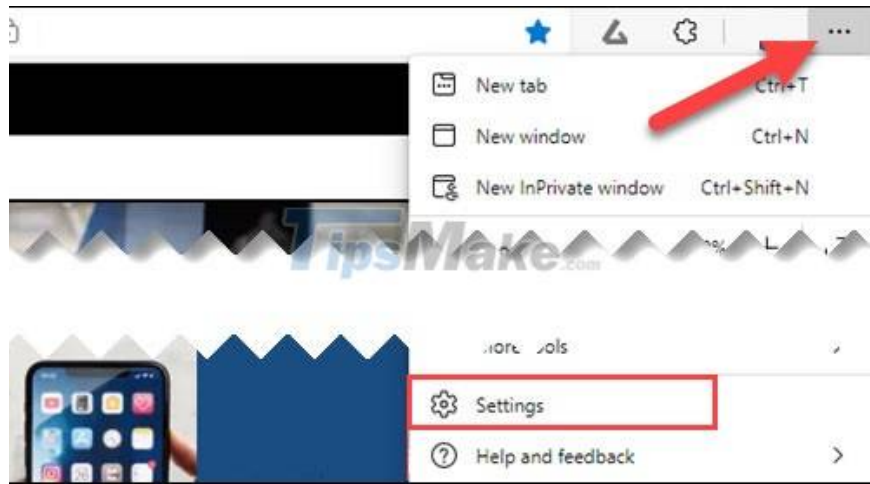
According to preliminary statistics, about 45% of vulnerabilities found in V8 JavaScript engine and WebAssembly are JIT related. More than half of all Chrome vulnerabilities exploited take advantage of JIT bugs.

When enabled, Super Duper Secure Mode removes Just-In-Time Compilation (JIT) from the V8 workflow, thereby eliminating the attack surface that allows malicious actors to hack into Edge users' systems. .

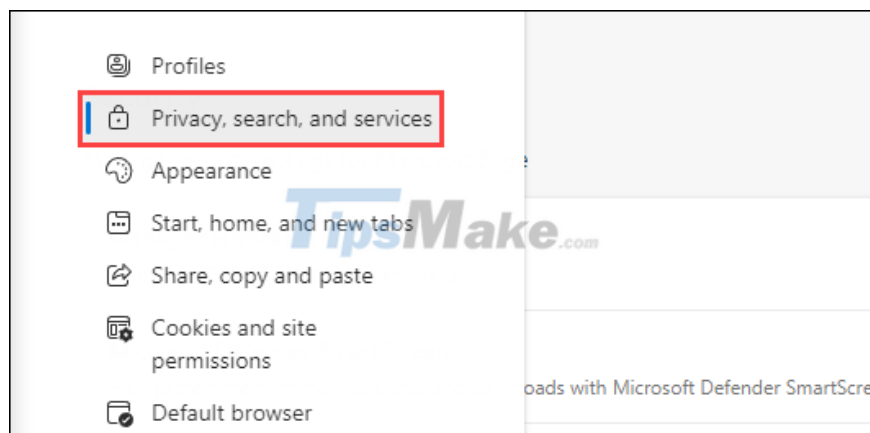
The JIT exists to speed up your browsing, but Microsoft says that disabling it doesn't always have a negative impact on performance. Super Duper Secure Mode also enables the launch of Control-flow Enforcement Technology (CET), an Intel hardware-based exploit prevention tool that further enhances browser security.

## How to activate Super Duper Secure Mode

The process of activating Super Duper Secure Mode on Edge is generally very simple. First, you open the Microsoft Edge app on your Windows, Mac, or Linux computer and click the three-dot menu icon in the top right corner. Then, click on the 'Settings' item.



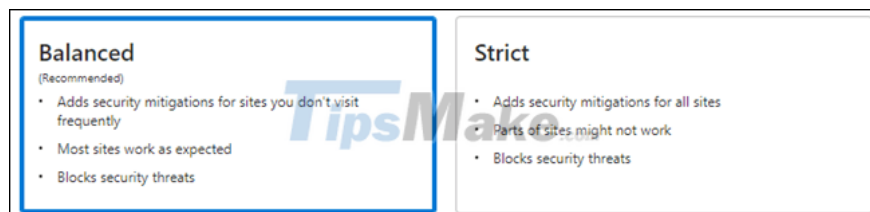
Next, you navigate to the 'Privacy, Search, and Services' section.



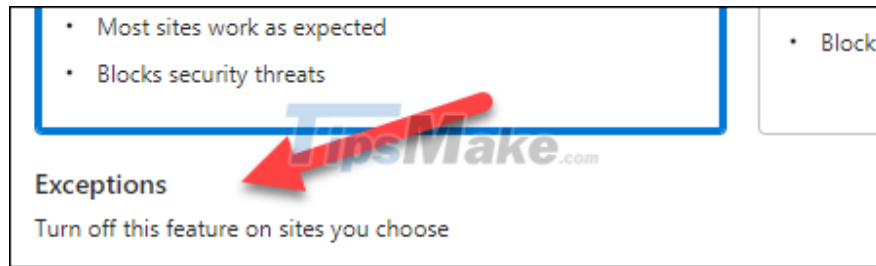
Scroll down to the 'Enhance your security on the web' section and toggle the toggle to on. In older versions of Edge, this will be titled 'Enable security mitigations for a more secure browser experience'.



You can choose between "Balanced" and "Strict" modes. Balanced mode will only affect websites you don't visit often. In contrast, Strict mode applies to all websites.



Finally, you can click 'Exceptions' and add any site to the exclusion list that applies Super Duper Secure Mode.



Note that Super Duper Secure Mode is still in the development stage, so there may be tweaks and changes applied by Microsoft over time.

You finished reading the article "**How to enable Super Duper security mode in Microsoft Edge**" edited by the [TipsMake](#) team. We hope this article has provided you with many useful tech tips and tricks. You can search for similar articles on tips and guides. Thank you for reading and for following us regularly.