

# How to enable Sets feature to combine tabs into a Windows 10 Build 17666 window

Sets on Windows 10 Build 17666 are features that group applications into the same window, helping to streamline the computer interface.

Windows 10 Build 17666 users have added new Sets feature with the ability to group running applications on the same window. Activities on each application still take place as usual, without interplay between applications in the same window.

Currently the Sets feature is applied to some people who join the Windows Insider Program with build 17666, not all people use the feature. However, users can still use the Sets feature even if they are not enabled under the article below.

1. How to merge Windows application windows into one?
2. How to use Screen Snip, a new screen capture feature on Windows 10
3. How to use a virtual machine to test Windows 10 Insider builds does not worry about system failure

## Instructions for experiencing Sets feature on Windows 10

### Step 1:

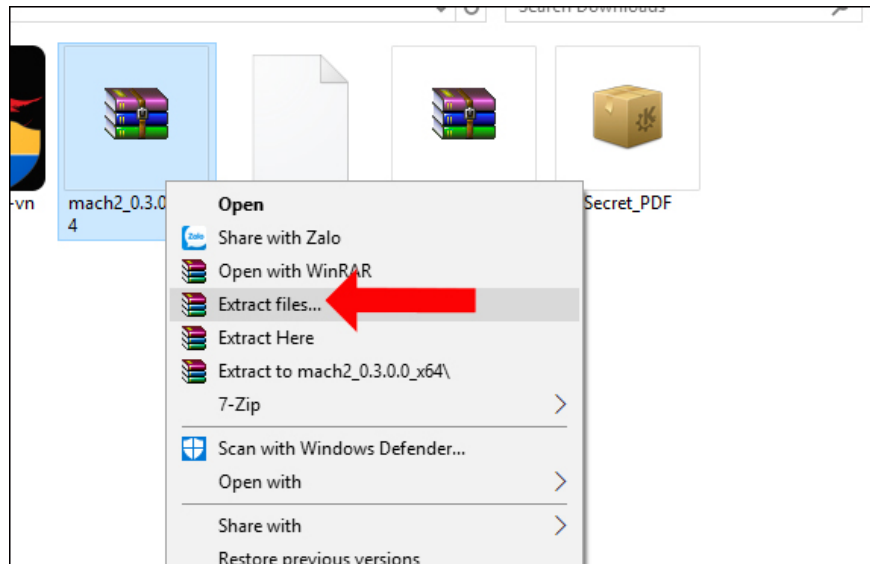
First of all to be able to use the Sets feature, you need to install Windows 10 Build 17666. You should run it on a virtual machine because some features are still incomplete. How to install Windows 10 Build 17666 refer to the link below.

1. Microsoft released Windows 10 (PC) Build 17661 for Insider Fast users

### Step 2:

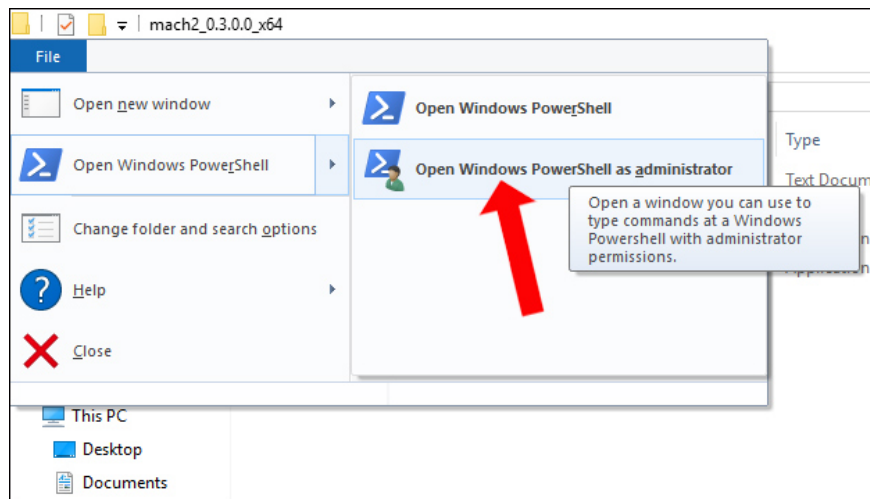
Next, download the Mach Management tool according to the link below and then extract it.

1. <https://www.fshare.vn/file/ELLUAIEAWIGJ>



### Step 3:

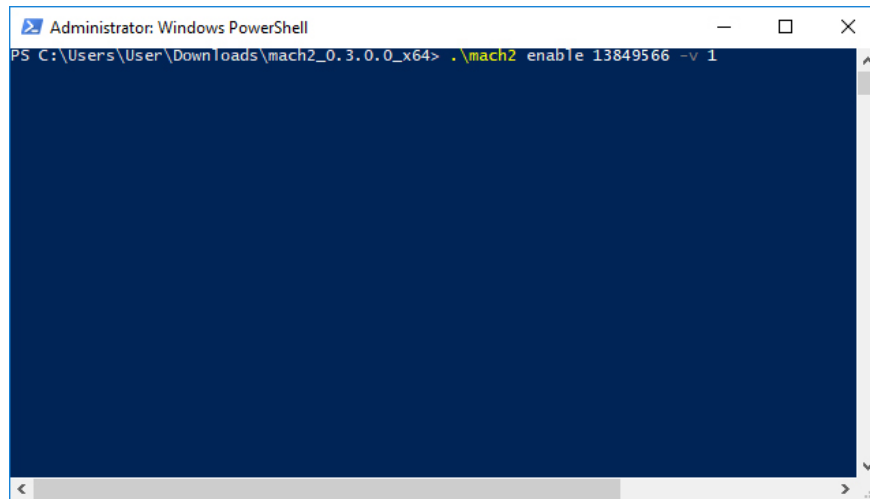
Open the Mach Management file decompression folder. In the File Explorer interface, click on **the File button** and select **Open Windows PowerShell> Open Windows PowerShell as administrator** .



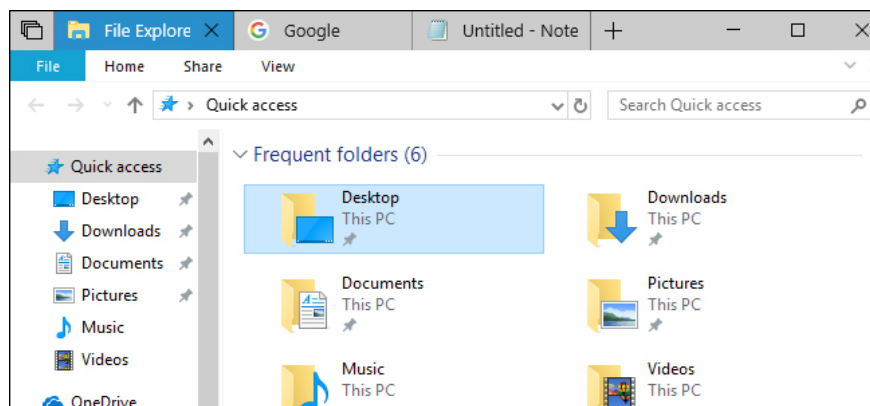
### Step 4:

The Administrator interface appears: Windows PowerShell. Here, please enter the following 2 commands into the interface. Each time you press Enter to perform. In case of entering this command an error can be replaced .mach2 with mach2.

1. `.mach2 enable 13849566 -v 1`
2. `.mach2 enable 10727725 -v 1`



Finally restart the computer and the Sets feature will be applied on the computer.



To avoid system failure, you should install Windows 10 Build 17666 on a virtual machine or other partition, due to the trial version, so it has not been working properly. We can then experience the Sets feature according to the above approach.

See more:

1. Windows Defender in Windows 10 April 2018 Update What's new?
2. Experience fast Windows 10 April 2018 Update
3. How to uninstall Windows 10 April 2018 Update

I wish you all success!

You finished reading the article "**How to enable Sets feature to combine tabs into a Windows 10 Build 17666 window**" edited by the [TipsMake](#) team. We hope this article has provided you with many useful tech tips and tricks. You can search for similar articles on tips and guides. Thank you for reading and for following us regularly.