

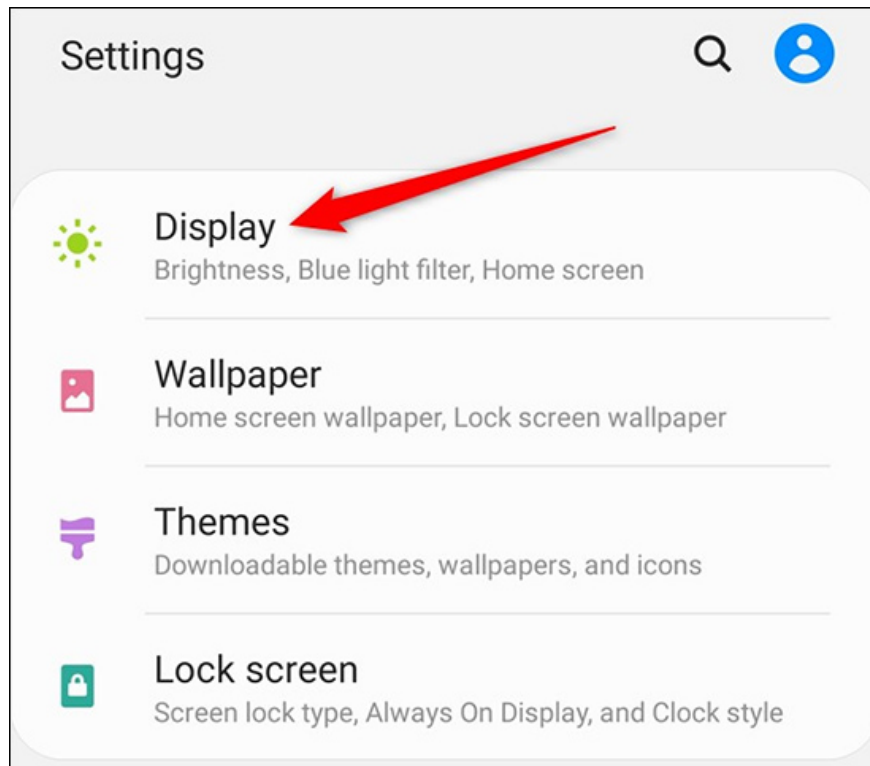
# How to enable gesture navigation, change the order of navigation buttons on Galaxy S20

Galaxy S20 series supports users to enable gesture navigation and change the order of 3 buttons in the navigation bar.

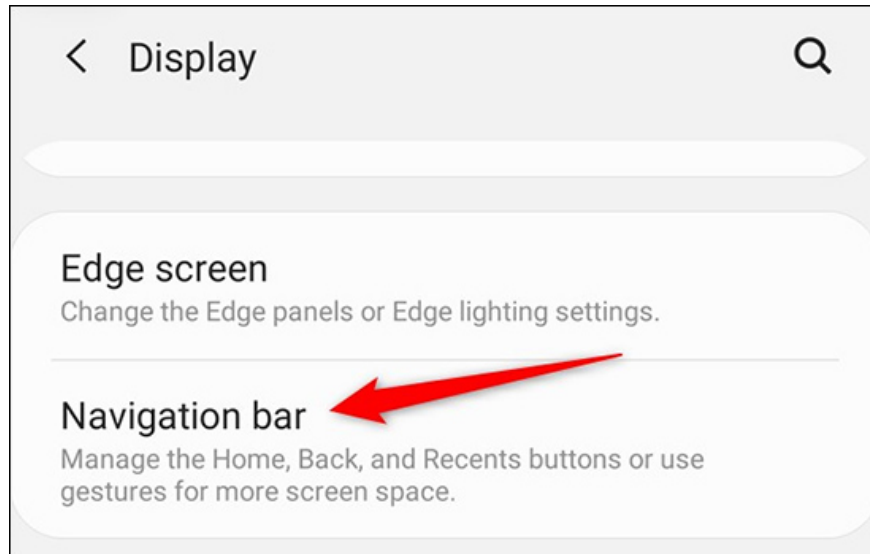
The Galaxy S20 product line has officially been on the market for users to experience the product. These products are not only different in appearance, the system also has many differences compared to the previous Samsung series. On the Galaxy S20 series, users can turn on gesture navigation or change the order of the navigation bar buttons for more convenient while using the device. The following article will guide you to turn on gesture navigation and change the order of the navigation bar buttons on the Galaxy S20.

## 1. How to enable gesture navigation on Galaxy S20

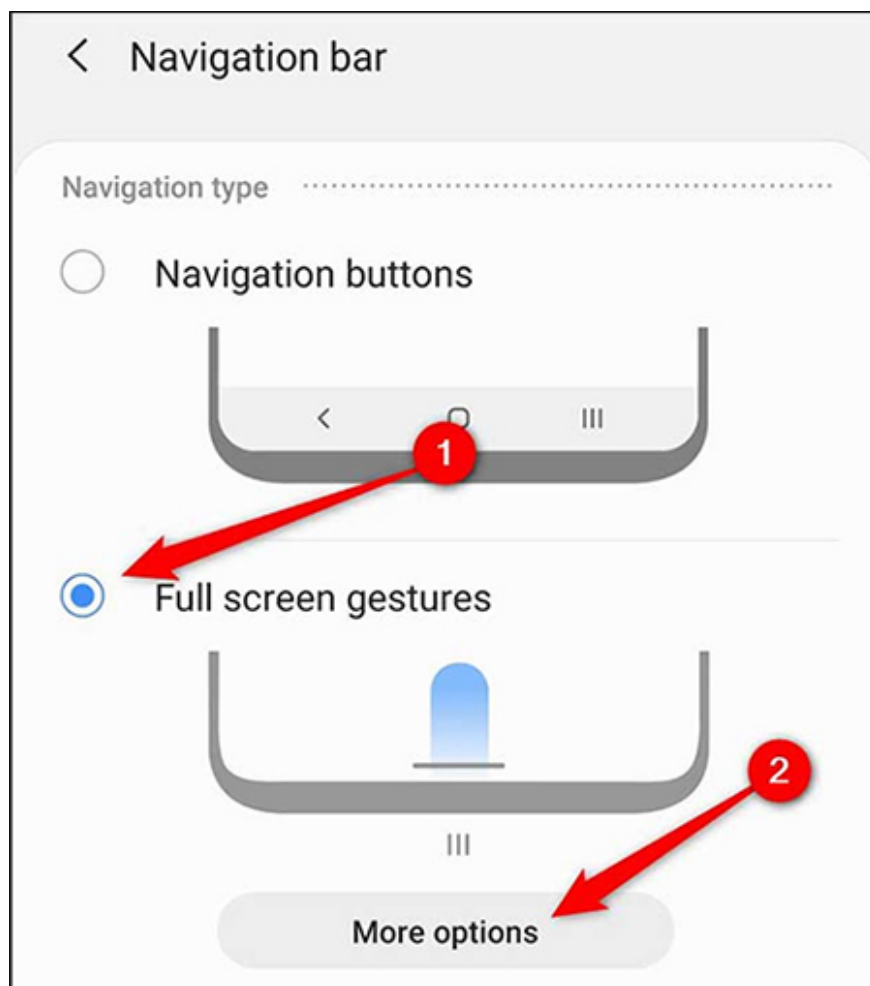
Swipe the screen from top to bottom, then tap the gear icon . Next in the display menu click on the **Display icon** .



Next, click on the **Navigation Bar** setting group to change the settings.

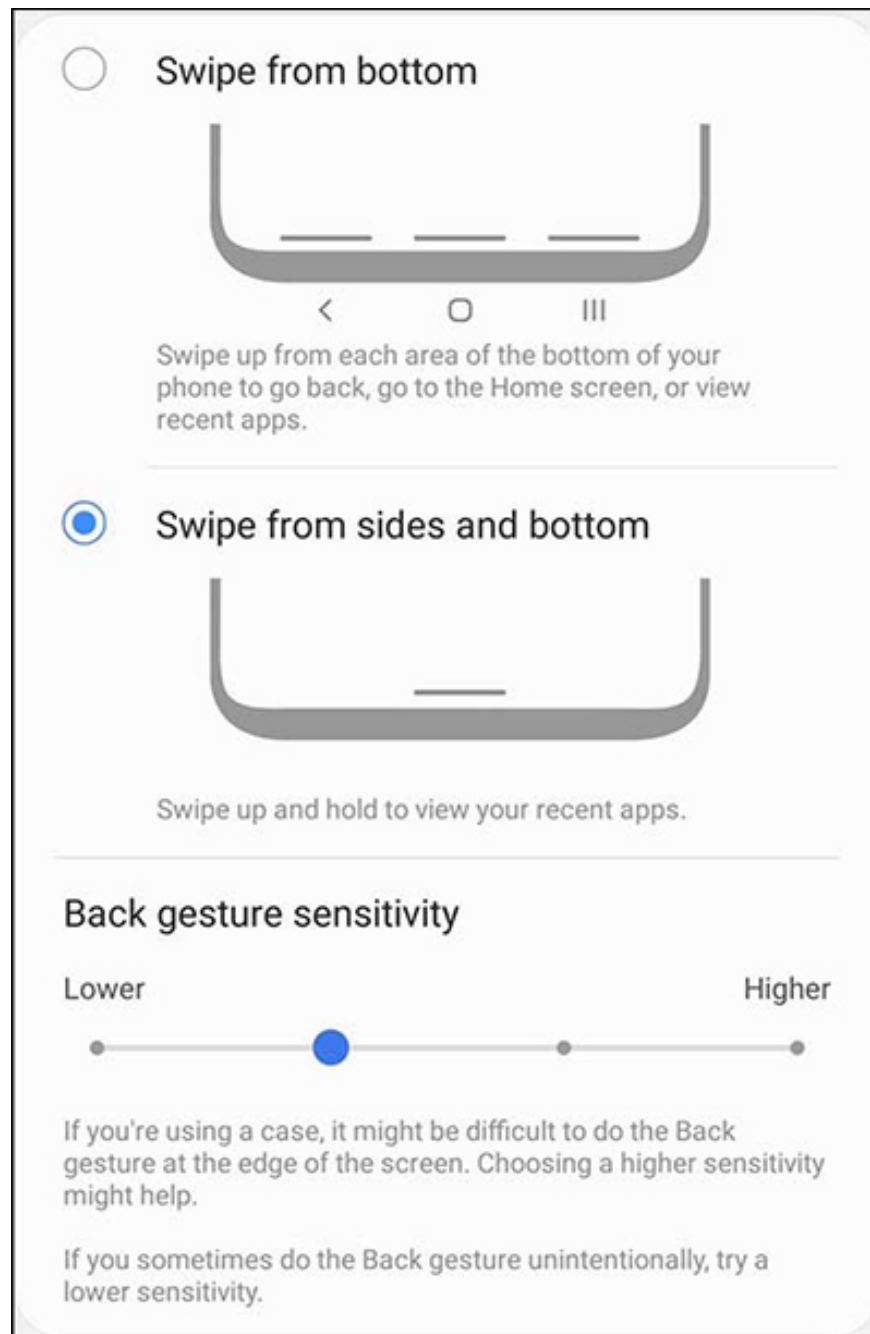


In this interface, users will click on **Full Screen Gestures** to switch from the three-button layout to Google's gesture navigation system. Click **More Options** to further adjust the gesture settings or fine-tune the sensitivity of the swipe gesture back.



We can see in this adjustment you can return to the main screen by swiping up from the bottom of the screen up, multitasking by swiping up the screen and hold for a few seconds, to return can swipe from the outside inside on the 2 sides. Users choose the operation convenient to you.

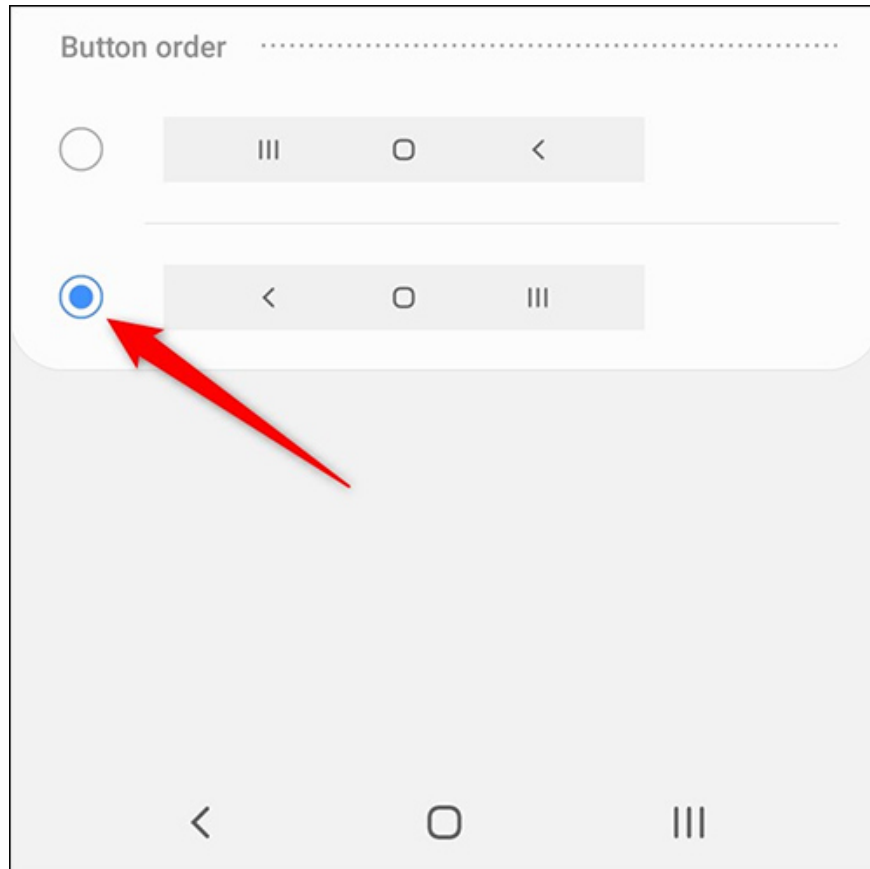
**Back gesture sensitivity bar** to adjust the gesture sensitivity, but you should leave it low.



## 2. Change the order of the Galaxy S20 navigation bar buttons

3 navigation buttons below the screen can change the order for more convenient use. We also access **Display** and click on **Navigation Bar** . Next, navigate to **the Button order section** and **select a new order for the 3**

**navigation buttons** . Changes are applied as soon as we click on the corresponding option.



You finished reading the article "**How to enable gesture navigation, change the order of navigation buttons on Galaxy S20**" edited by the [TipsMake](#) team. We hope this article has provided you with many useful tech tips and tricks. You can search for similar articles on tips and guides. Thank you for reading and for following us regularly.