

How to enable Dynamic Lock in Windows 10 Creators Update

Dynamic Lock is a new feature available on Windows 10 Creators Update, capable of controlling Windows 10 PC by phone device via Bluetooth connection.

Windows 10 Creators Update launches official users with many interesting and useful improvements for users. We can mention some features such as changing the list of options set on Settings, Night light to reduce blue light to avoid impacting on the user's eyes, Game Mode mode supports smoother game play on the computer , .

In it, it must include Dynamic Lock to control and lock Windows 10 PC device via mobile device. When the user connects the smartphone to the computer via Bluetooth, the feature will automatically lock the computer when you are not using it. Within 30 seconds, if the smartphone and the phone are not within range, then Windows will turn off the screen and lock the computer. If you still don't know how to use Dynamic Lock in Windows 10 Creators Update, follow the tutorial below.

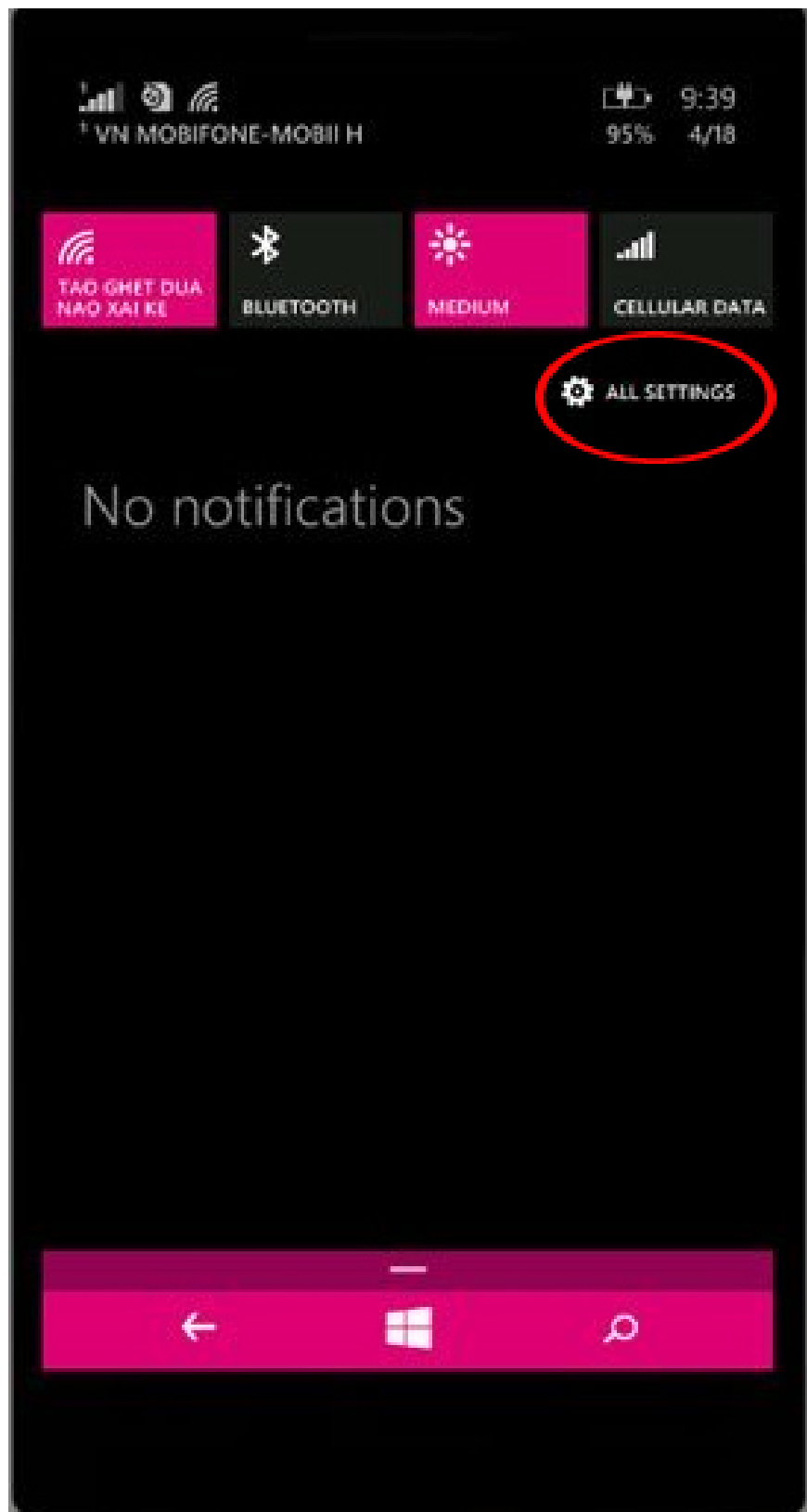
1. Download Windows 10 Creators Update

1. Connect your computer to your phone via Bluetooth:

First of all, to be able to use the Dynamic Lock feature on Windows 10 Creators Update you need to change some settings on the phone. Dynamic Lock supports all devices with Bluetooth connectivity. In the following article will work with Windows Phone, other operating systems do the same.

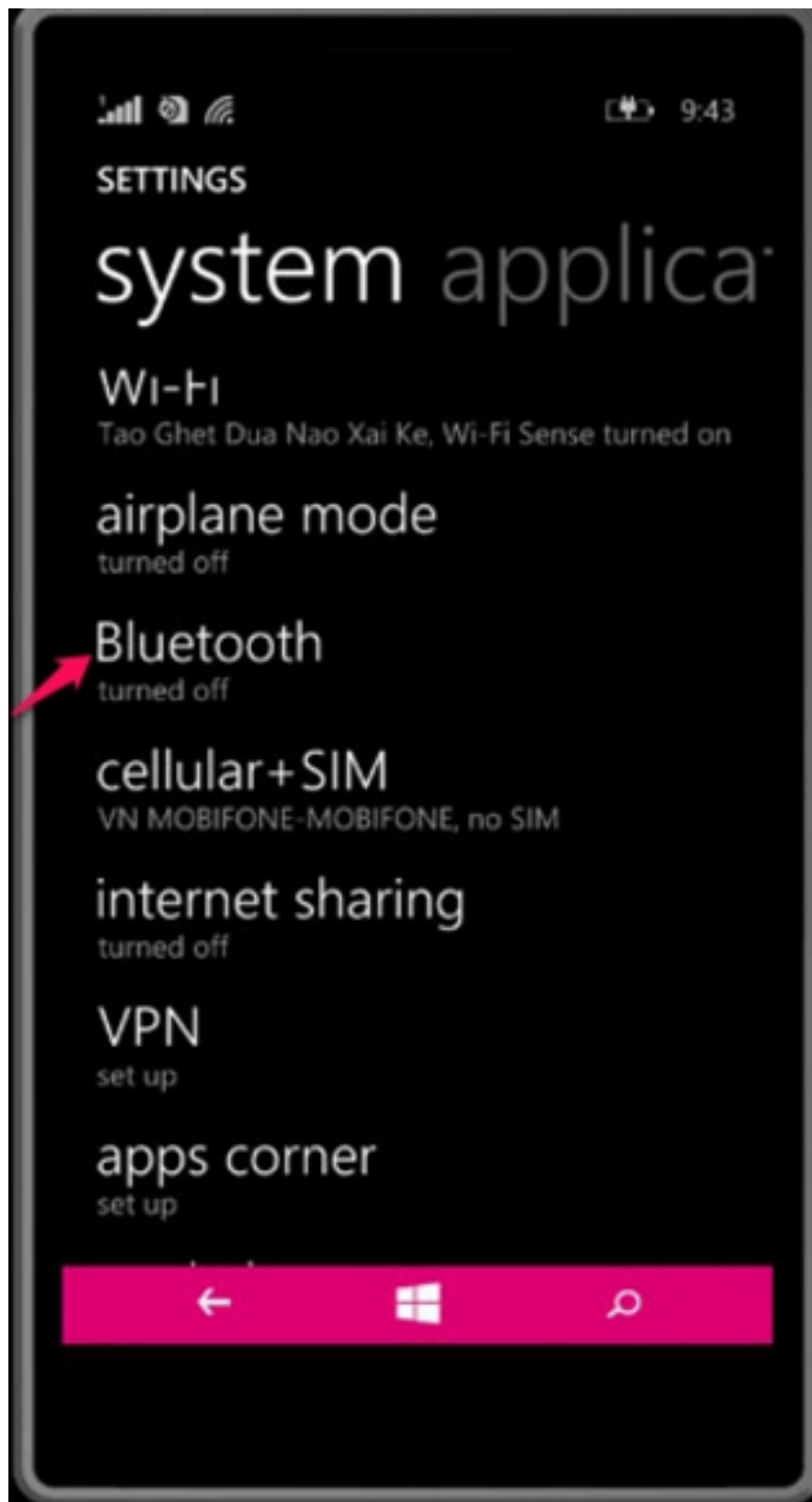
Step 1:

At the Windows Phone device interface, we swipe the screen from above and select **All settings** .

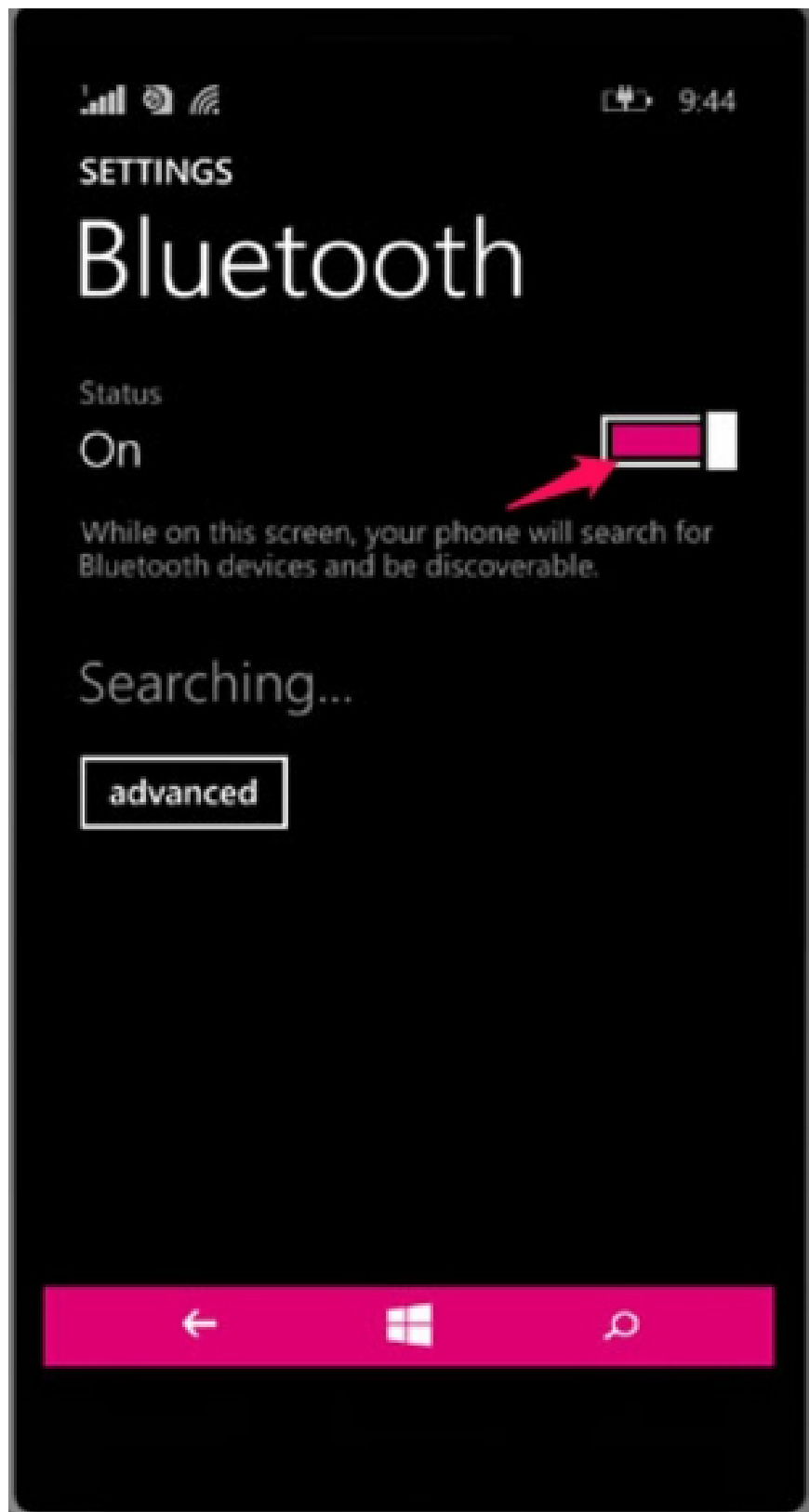


Step 2:

In the settings list installed on the device, we go to the **Bluetooth** section.

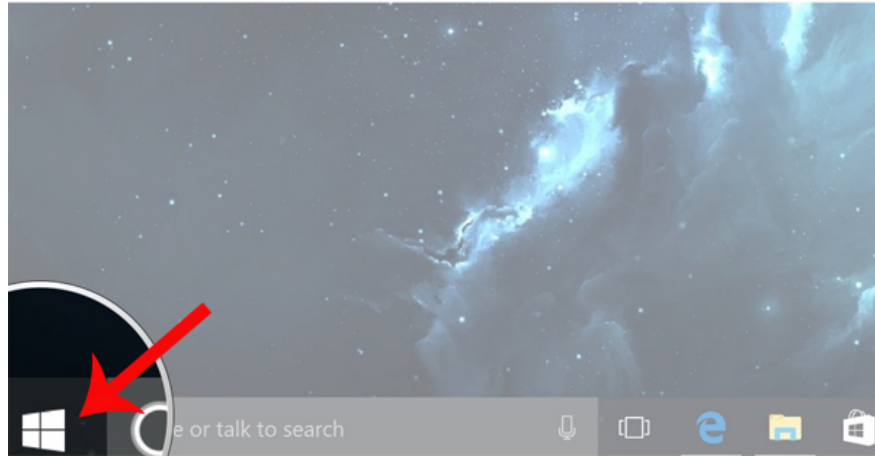


You need to **activate Bluetooth connectivity** on the device to connect to the computer.

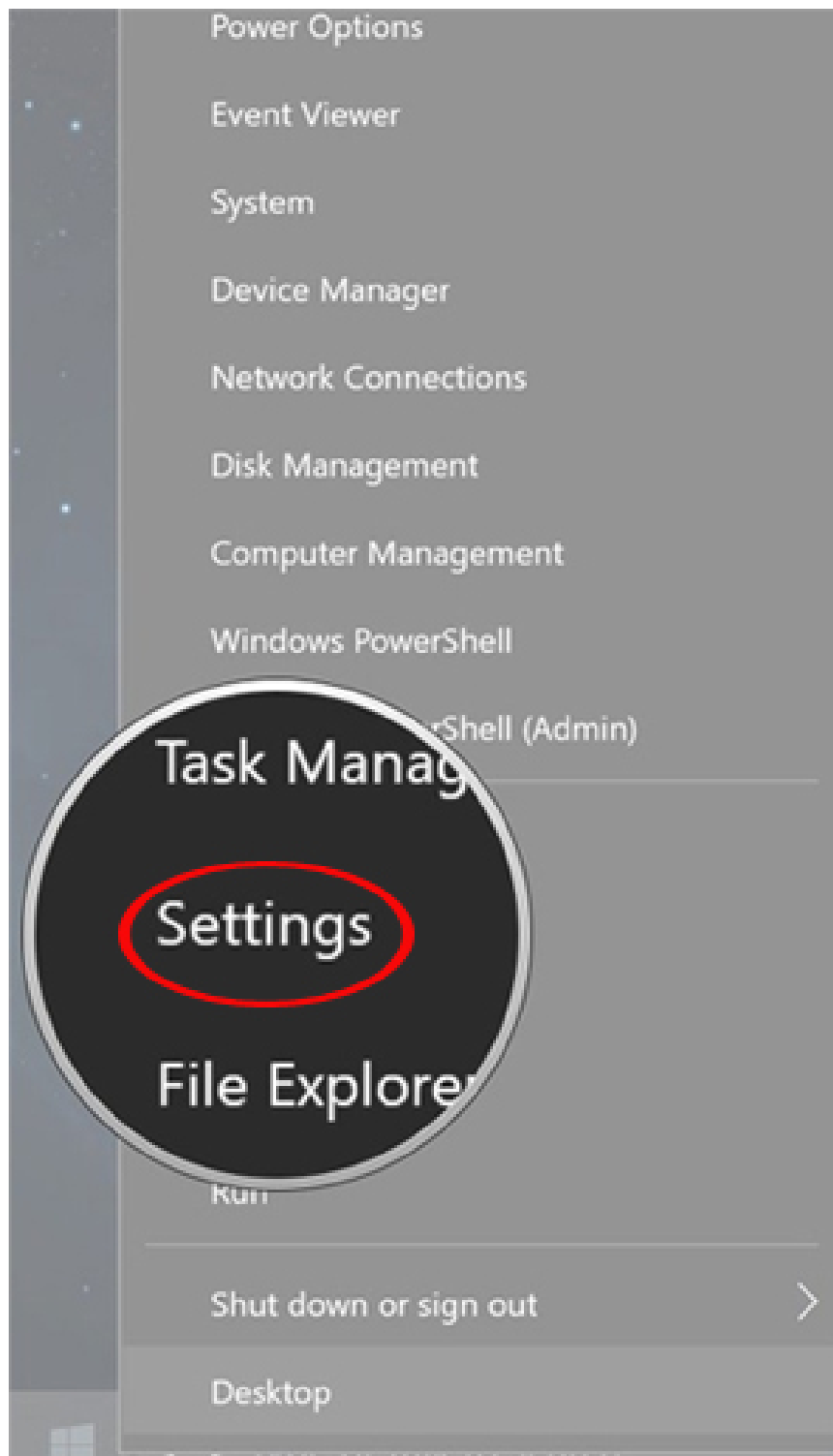


Step 3:

At the interface on the Windows 10 Creators Update computer, we right-click **the Start button** on the screen interface.



Then click on **Settings** .

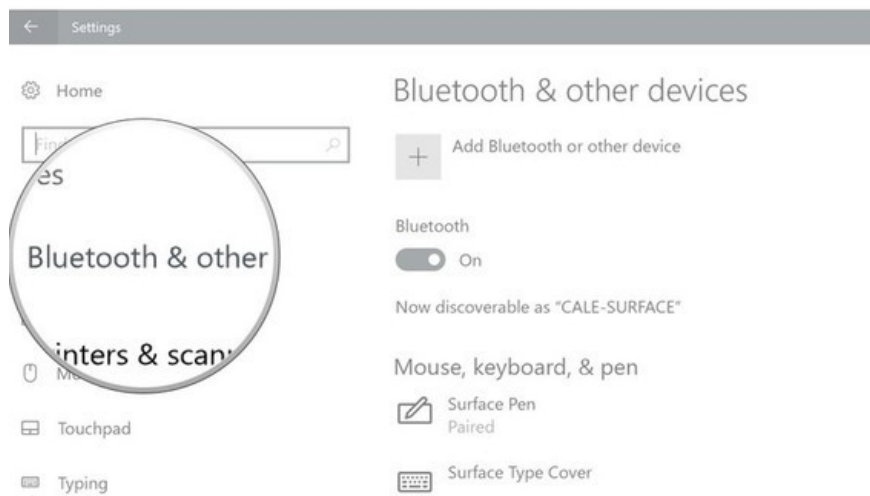


Step 4:

In the Settings list, click on **Devices** .

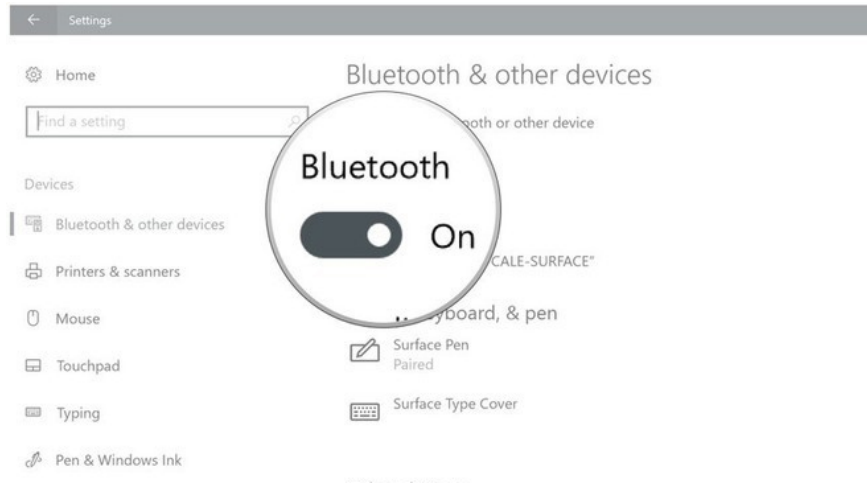


Switch to the new interface. Here, users will look down at the options list at the far left of the interface and select **Bluetooth & other devices** .

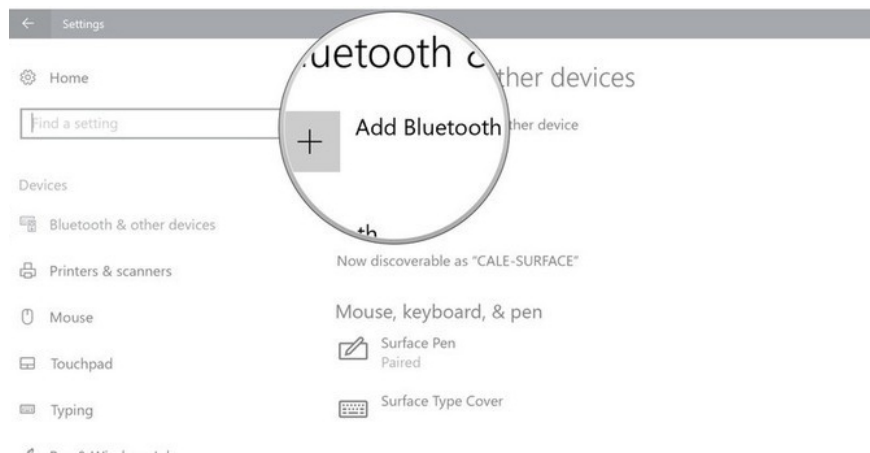


Step 5:

Looking to the right at the **Bluetooth** section, we will switch to **On mode** .



Then, click on the **Add Bluetooth or other device option** above.



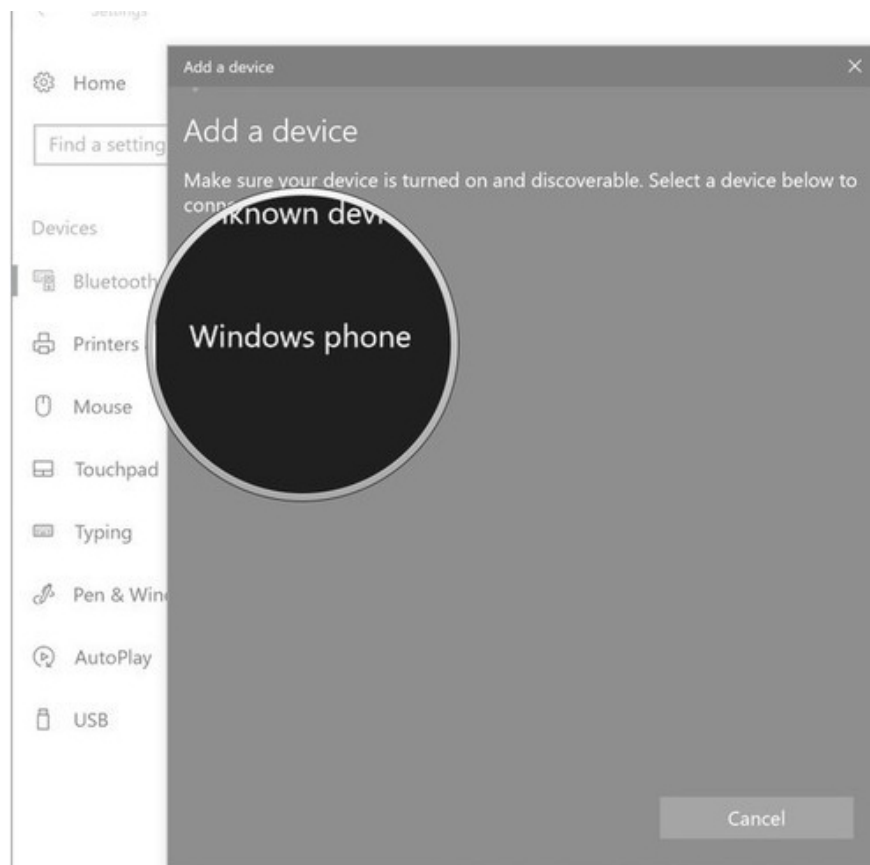
Step 6:

Users choose **the Bluetooth method** to connect between the phone and the computer. Always ensure that during the connection, Bluetooth on the phone is not interrupted midway.



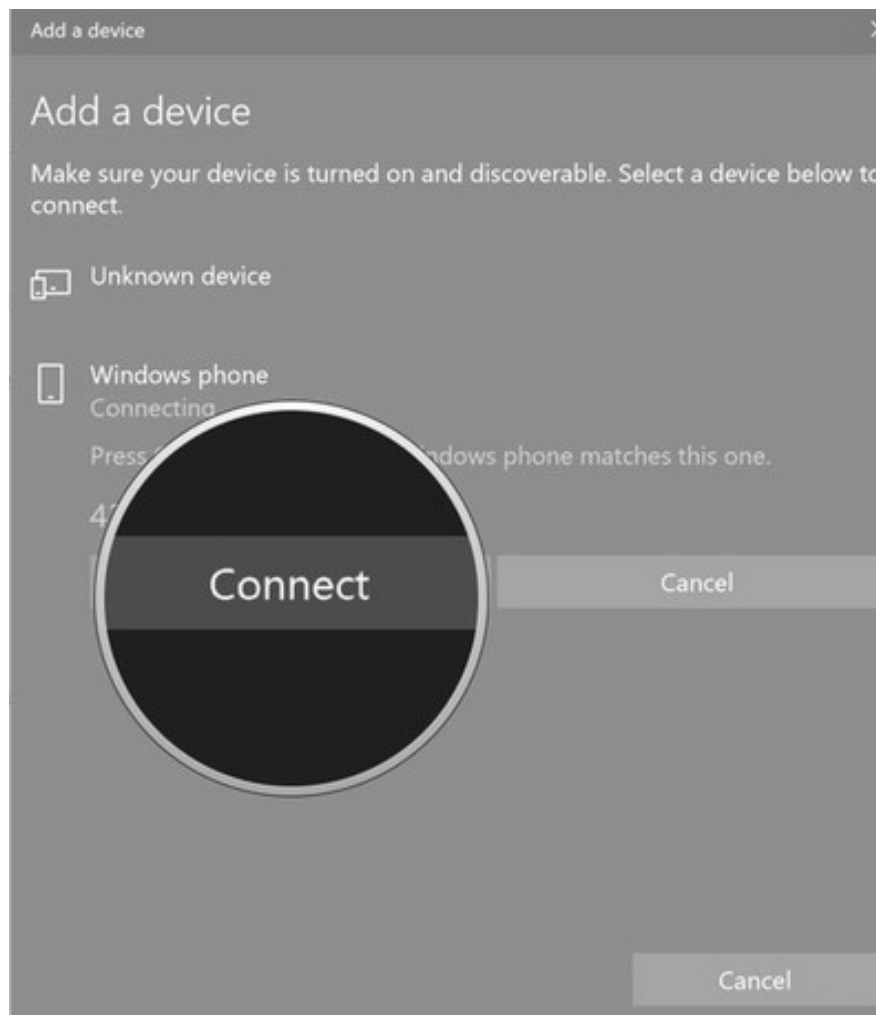
Step 7:

When the computer finds a smartphone device, the connection process will proceed. We will click on **Windows Phone**. At the same time, the device interface also appears the computer name being connected by Bluetooth.

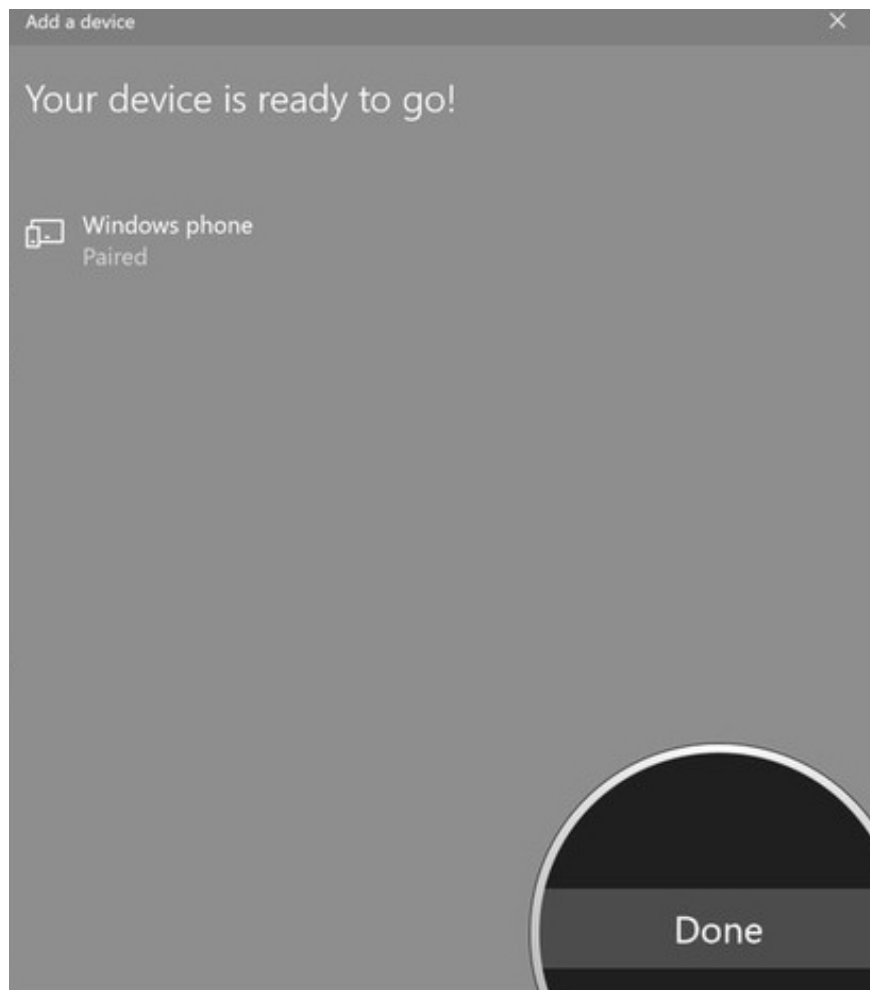


Step 8:

At this point, you need to click **Connect** to agree to the computer connecting to the smartphone device.



When the connection process is successful, you will receive the message **Your device is ready to go** . Click **Done** to close the connection window on the computer.

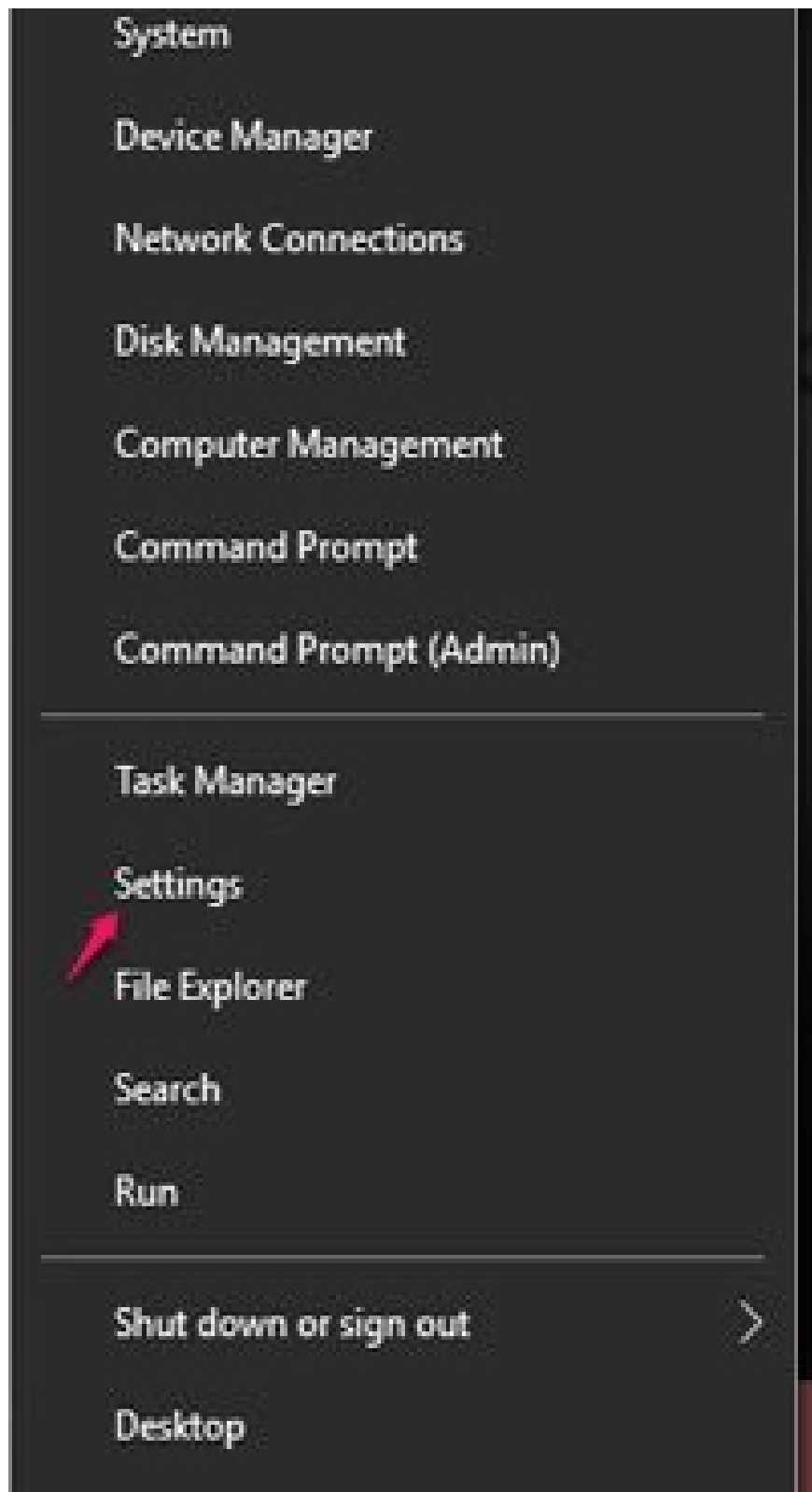


2. How to enable Dynamic Lock on Windows 10 Creators Update:

After we have completed the process of connecting the computer to the phone via Bluetooth, you will continue to perform actions to enable this feature to use.

Step 1:

First of all, click on the Start icon and then click **Settings** .



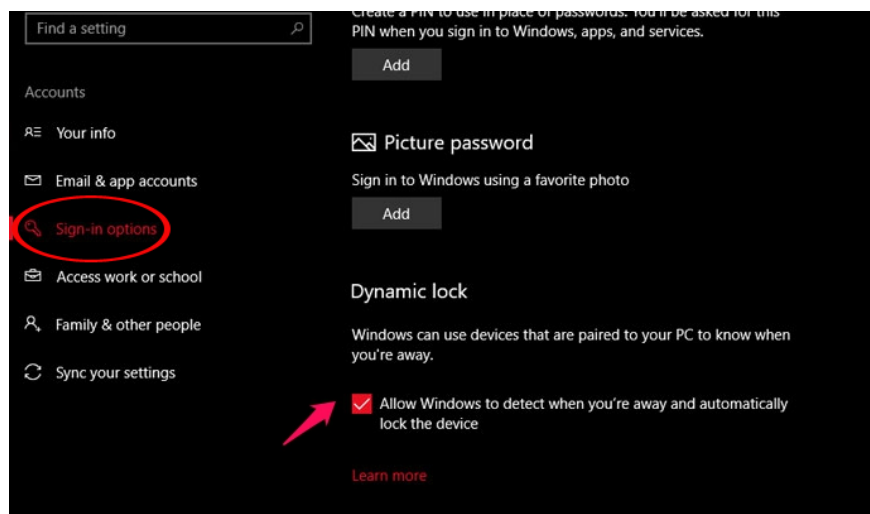
Step 2:

Next, we will select **Accounts** .



Step 3:

To Account interface, you will click on **Sign-in options** in the **options** list on the left of the interface. Looking to the right of **Dynamic Lock**, we need to select **Allow Windows to detect when you're away and automatically lock the device**, allowing it to **automatically lock the device when you're** not around.



So you've activated the Dynamic Lock feature on Windows 10 Creators Update. If the user leaves the connection range, the computer will be in normal mode for 30 seconds and then enter the lockout state. To reuse, we need to re-log in the computer. With this feature, the security of computer devices will be more advanced, especially in case you forget to turn off the device.

Refer to the following articles:

1. How to enable the auto-lock feature when users leave - Dynamic Lock on Windows 10
1. Clear the Windows 10 Update Cache to free up memory space
1. 2 ways to turn off Auto Update (update) on Windows 10

You finished reading the article "**How to enable Dynamic Lock in Windows 10 Creators Update**" edited by the [TipsMake](#) team. We hope this article has provided you with many useful tech tips and tricks. You can search for similar articles on tips and guides. Thank you for reading and for following us regularly.

