

How to enable / disable video input in Windows Sandbox on Windows 10

Windows Sandbox provides a lightweight desktop environment to safely run applications. This tutorial will show you how to enable or disable video input in Windows Sandbox for all users in Windows 10.

Windows Sandbox provides a lightweight desktop environment to safely run applications. Software installed inside the Windows Sandbox environment is sandboxed and runs separately from the server.

A few things about Windows Sandbox

The sandbox is temporary. When it is closed, all software, files and status will be deleted. You get a completely new version of the sandbox every time you open the application.

Starting with Windows 10 build 20161, a new group policy setting has been added, to enable or disable video input to the Sandbox.

If you enable this policy setting, video input will be enabled in Windows Sandbox.

If you disable or do not configure this policy setting, video input will be disabled in Windows Sandbox. Apps that use video input may not work properly in Windows Sandbox.

This tutorial will show you how to enable or disable video input in Windows Sandbox for all users in Windows 10.

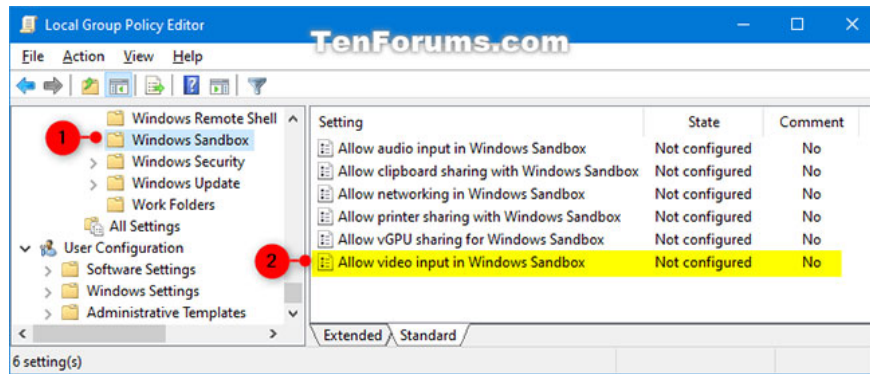
Note:

1. You must be logged in as an administrator to enable or disable video input in Windows Sandbox.
2. Windows Sandbox is only available for Windows 10 Pro and Windows Enterprise build 18305 and above.

Turn on / off video input in Windows Sandbox with Local Group Policy Editor

1. Open Local Group Policy Editor.
2. Navigate to the key below in the left panel of the Local Group Policy Editor.

Computer ConfigurationAdministrative TemplatesWindows ComponentsWindows Sandbox



Navigate to this key

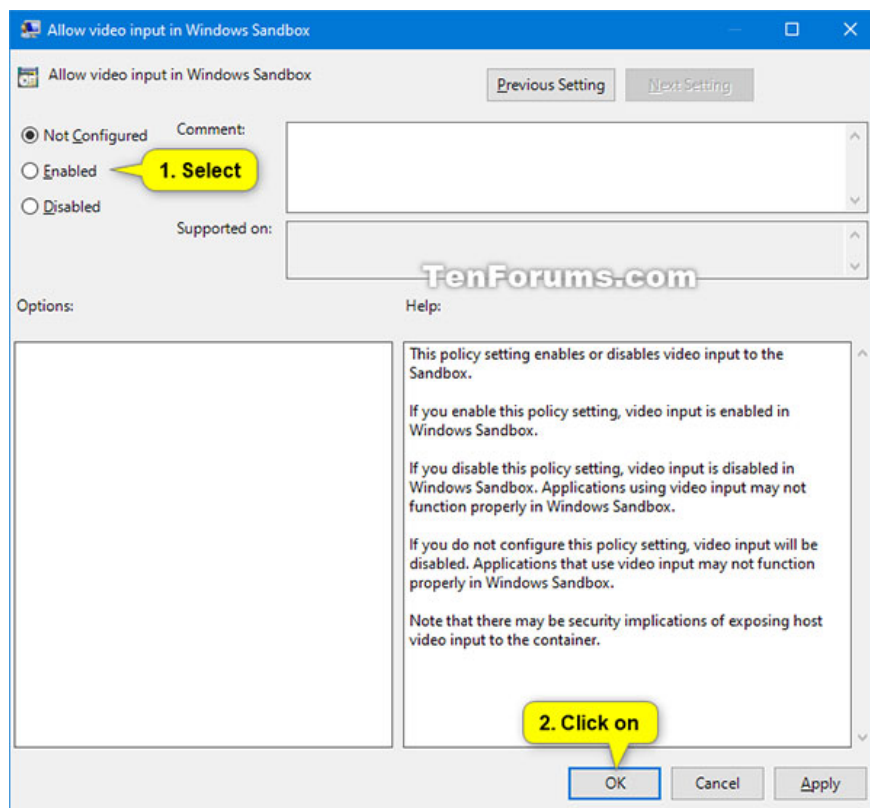
3. In the right panel of Windows Sandbox in the Local Group Policy Editor, double-click the policy **Allow video input in Windows Sandbox** to edit.

4. Follow step 5 (to turn on) or step 6 (to turn off) below, depending on what you want to do.

5. To enable video input in Windows Sandbox, select **Enabled** , click **OK** and go to step 7 below.

6. To disable video input in Windows Sandbox, select **Disabled** or **Not Configured** , click **OK** and go to step 7 below.

(**Not Configured** is the default setting).



To disable video input in Windows Sandbox, select Disabled or Not Configured

7. Close Local Group Policy Editor.

You finished reading the article "**How to enable / disable video input in Windows Sandbox on Windows 10**" edited by the [TipsMake](#) team. We hope this article has provided you with many useful tech tips and tricks. You

can search for similar articles on tips and guides. Thank you for reading and for following us regularly.
