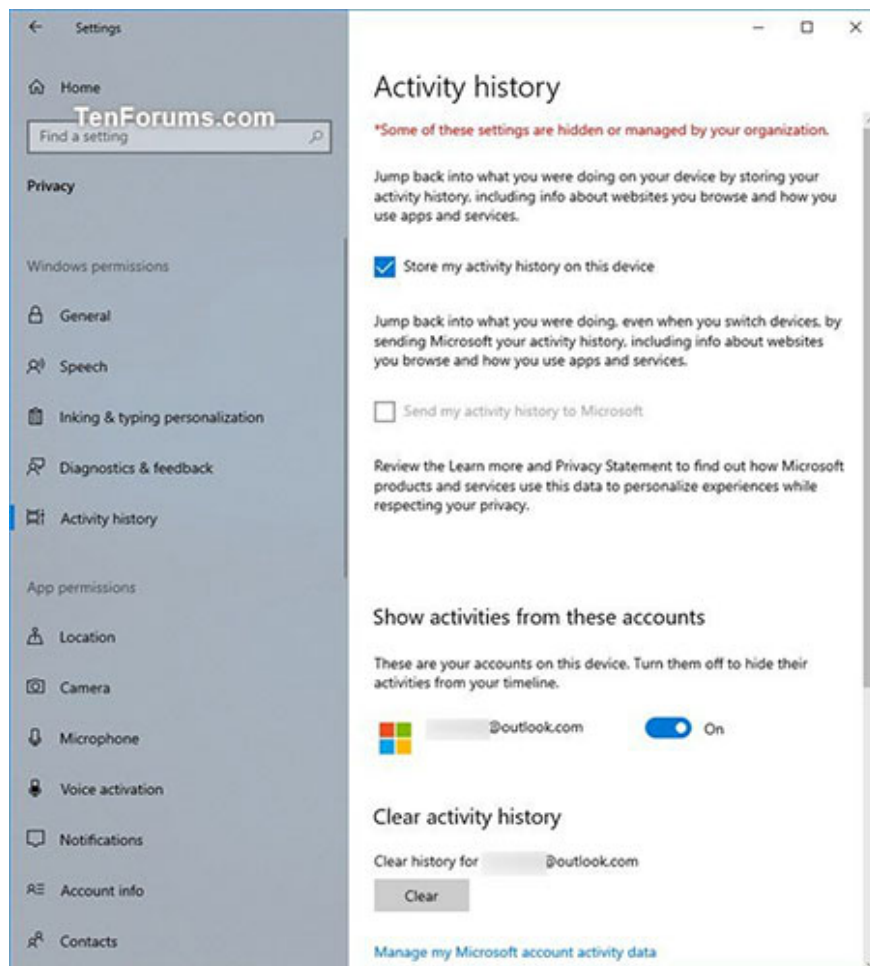


How to enable / disable the sync feature works from PC to cloud in Windows 10

Starting with Windows 10 17083, Microsoft has added a new installation that allows you to sync your activities with the cloud for a seamless experience across devices.

Sync works for a seamless experience

You can enable the **Let Windows sync my activities from this PC to the cloud** option in the **Settings** app or through an option provided at the bottom of the **Timeline**. Until the new user activates this setting, Timeline will only display 4 days for the activity.



You can enable the Let Windows sync my activities from this PC to the cloud option in the Settings app or through an option provided at the bottom of the Timeline.

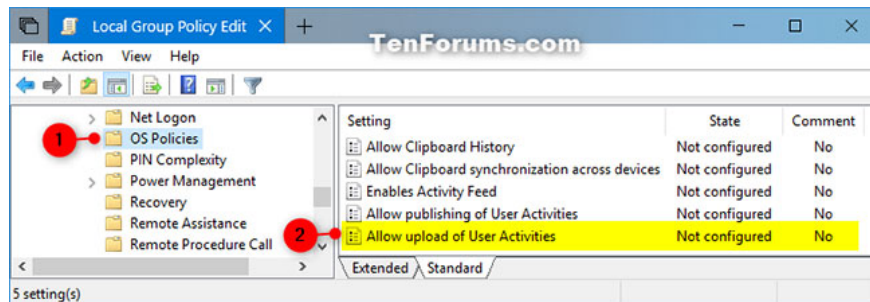
If necessary, you can set a group policy in Windows 10 to allow (enable) or prevent (disable) users who cannot turn on (select) **Let Windows sync my activities from this PC to the cloud** when using the account. their account on the PC. This policy setting determines whether published **User Activities** can be uploaded.

This tutorial will show you how to enable or disable the **Send my activity history to Microsoft feature** for all users in Windows 10.

Enable / disable syncing operations from PC to cloud in Local Group Policy Editor

Local Group Policy Editor is only available in Windows 10 Pro, Enterprise and Education editions.

1. Open Local Group Policy Editor.
2. In the left panel of **Local Group Policy Editor** , click to expand **Computer Configuration, Administrative Templates, System and OS Policies**.

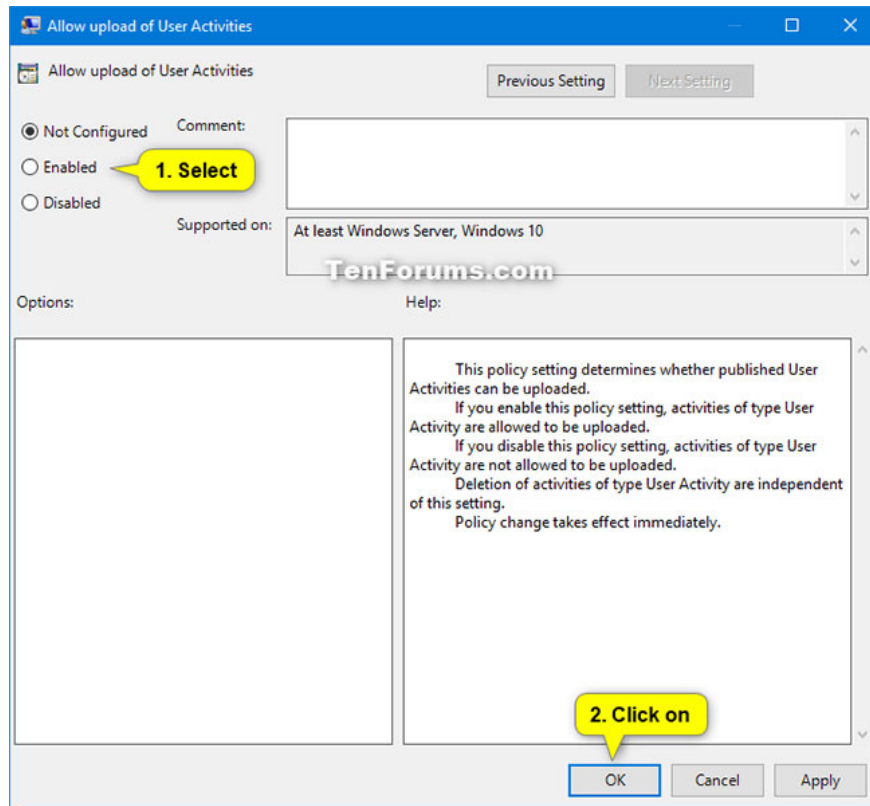


Click to expand Computer Configuration, Administrative Templates, System and OS Policies

3. In the right panel of **OS Policies** , double click on the policy **Allow upload of User Activities** to edit it.
4. Follow step 5 (to turn on) or step 6 (to turn off) below, depending on what you want to do.
5. To turn on PC-to-cloud sync for all users, select **Not Configured** or **Enabled** , click **OK** and go to step 7 below.

Not Configured is the default setting.

6. To disable syncing from PC to cloud for all users, select **Disabled** , click **OK** and go to step 7 below.



To disable syncing from PC to cloud for all users, select Disabled

7. When done, you can close the **Local Group Policy Editor** if desired.

You finished reading the article "**How to enable / disable the sync feature works from PC to cloud in Windows 10**" edited by the [TipsMake](#) team. We hope this article has provided you with many useful tech tips and tricks. You can search for similar articles on tips and guides. Thank you for reading and for following us regularly.