

How to enable / disable the delete delete confirmation dialog box

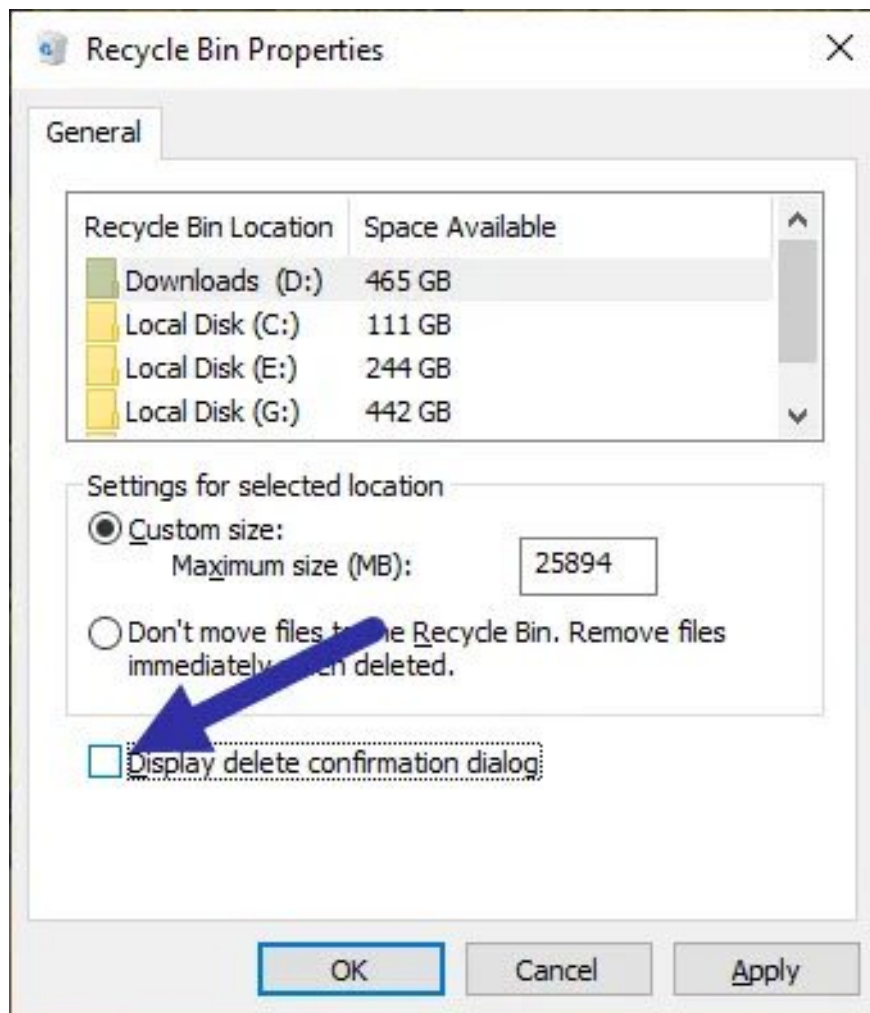
To delete a file in Windows, all you have to do is press the Delete key. Windows displays a confirmation dialog when you try to delete a file permanently. This is how you can enable or disable it as needed.

To delete a file in Windows, all you have to do is press the key Delete. Windows displays a confirmation dialog when you try to delete a file permanently. This is how you can enable or disable it as needed.

Disable the delete confirmation dialog from Recycle Bin

The Recycle Bin has a dedicated option to enable or disable the permanently delete confirmation dialog. All you have to do is select a checkbox and you're done.

1. First, go to the desktop, right click on **Recycle Bin** and select **Properties** option .
2. In the **Properties** window , clear the **Display delete confirmation dialog box** and click the **Apply** button > **OK** to save the changes.



Deselect the Display delete confirmation dialog box
It's done! From now on, you will not see a delete confirmation dialog.

Reactivate delete confirmation dialog:

If you want to enable the confirmation dialog, simply select the checkbox you deselected in step 2.

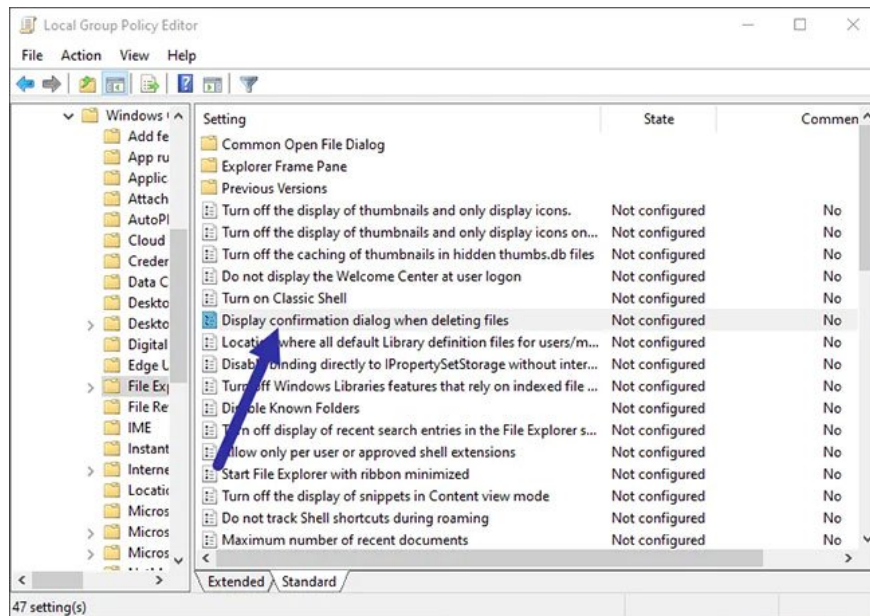
Turn on / off through Group Policy Editor

Occasionally, even after you uncheck the above option, Windows may still display a delete confirmation dialog box. In those cases, you must use the Group Policy Editor to turn off the dialog. The implementation is quite easy.

1. Open the **Start menu** , search **Edit Group Policy** and click the result to open **Group Policy Editor** .
2. After opening the **Group Policy Editor** , navigate to the following folder by expanding the folder tree on the left panel:

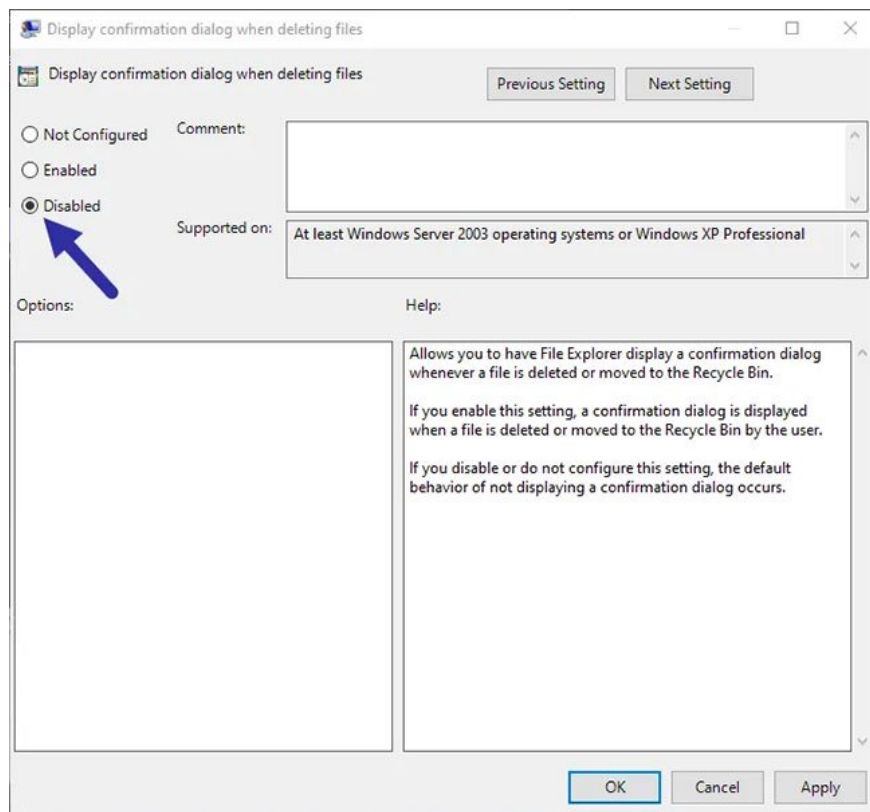
User Configuration > Administrative Templates > Windows Components > File Explorer

3. On the right, double-click the **Policy Display confirmation dialog when deleting files** .



Double click the Policy Display confirmation dialog when deleting files

4. In the **Policy Properties** window , select the **Disabled** option and click the **Apply** button > **OK** to save the policy changes.



Select the Disabled option

After changing the policy, restart Windows or execute the command `gpupdate /force` with admin rights. This action will apply the policy to the Windows system. From now on, you will no longer see the confirmation

dialog.

If you want to turn the dialog back on, open the **Policy Properties** window and select the **Not configured** or **Enabled option** , and then restart Windows.

You finished reading the article "**How to enable / disable the delete delete confirmation dialog box**" edited by the [TipsMake](#) team. We hope this article has provided you with many useful tech tips and tricks. You can search for similar articles on tips and guides. Thank you for reading and for following us regularly.