

# How to enable / disable the ask option before automatically switching to Tablet Mode in Windows 10

This guide will show you how to turn off or turn on the options: Don't ask me and don't switch, Always ask me before switching and Don't ask me and always switch when your Windows 10 PC automatically switches tablet mode in Windows 10.

Continuum is a new way to switch between Tablet and Desktop mode on a tablet or PC Convertible Windows 10 when needed.

## Tablet Mode on Windows 10

Tablet Mode makes Windows easier to use and intuitive when you use touch on 2-in-1 devices or don't want to use a keyboard and mouse.

You should see the desktop by default on regular laptops or desktops.

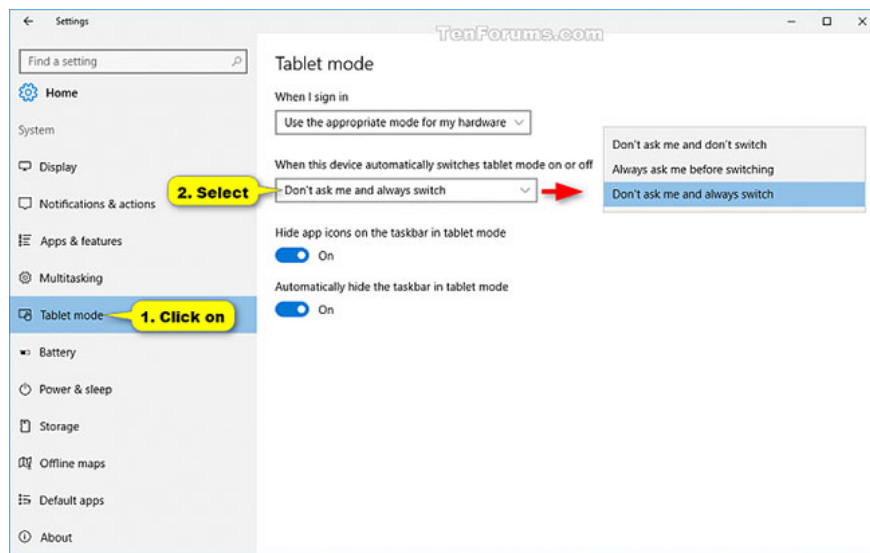
Tablet Mode will be enabled by default on the tablet.

On PC Convertible, splitting or attaching the keyboard, by default, will prompt you to turn Tablet Mode on and off accordingly.

This guide will show you how to turn off or turn on the options: **Don't ask me and don't switch** ( **Always ask me before switching** ), **Always ask me before switching** (Always ask before switching) and **Don ' t ask me and always switch when your Windows 10 PC automatically switches tablet mode** (Do not ask and always switch when PC Windows 10 automatically switches to Tablet Mode).

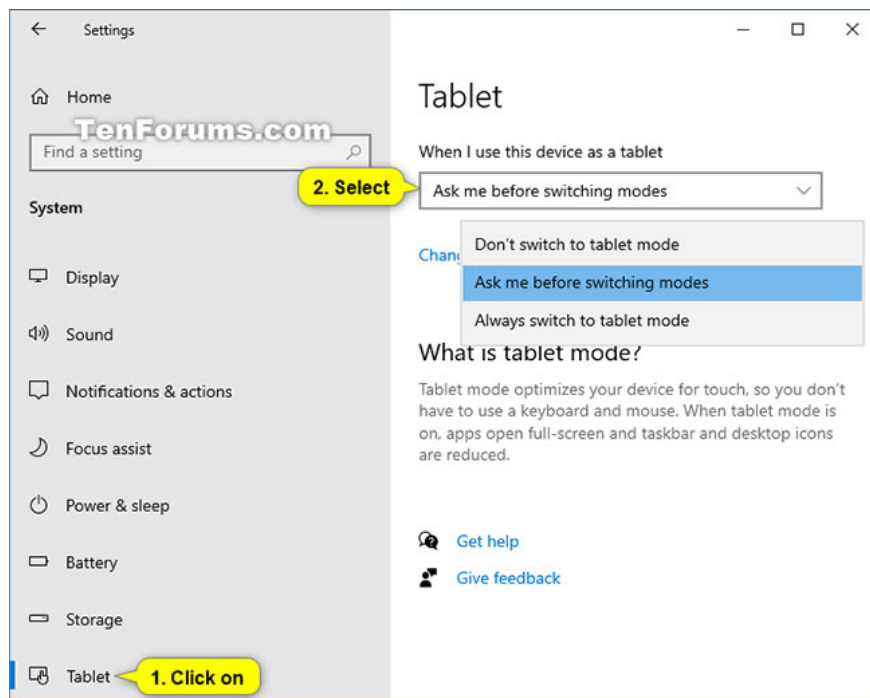
## Turn on / off the option to ask before automatically switching to Tablet Mode in Settings

1. Open **Settings** and click on the **System** icon .
2. Click on **Tablet Mode** on the left and select **Don't ask me and don't switch**, **Always ask me before switching** or **Don't ask me and always switch** in **When this device automatically switches tablet mode on or off** on the side Yes, depending on what you want.



Click Tablet Mode on the left

**Note :** Starting with Windows 10 build 19592, you'll need to click on the **Tablet** on the left and select **Don't switch to tablet mode, Ask me before switching modes** or **Always switch to tablet mode** in **When I use this device as a tablet** on the right side instead.



Starting with Windows 10 build 19592, you'll need to click on the Tablet on the left  
3. When done, you can close the **Settings** if desired.

You finished reading the article "**How to enable / disable the ask option before automatically switching to Tablet Mode in Windows 10**" edited by the [TipsMake](#) team. We hope this article has provided you with many useful tech tips and tricks. You can search for similar articles on tips and guides. Thank you for reading and for following us regularly.