

# How to enable / disable Index Encrypted Files feature in Windows 10

This guide will show you how to enable or disable the Index Encrypted Files feature for indexing encrypted files in Windows 10.

By default, Windows will use the index when searching to give you faster search results. The search index includes only the locations you have selected. These locations can be filtered by the type of file (extension), file attributes, and the file content you want to index.

## Indexing encrypted files

The index uses the **Windows Search** service and runs as the **Searchindexer.exe** process in the background. The index automatically rebuilds and updates the changes made to the included locations, since the last indexing to increase the accuracy of the search results. By default, indexing speed is reduced due to user activity. If the computer is idle, the indexing speed will return to its maximum to complete indexing faster.

Windows Search 4.0 and above fully supports indexing of encrypted files on local file systems using EFS, allowing users to index and search properties, as well as the content of encrypted files. Users can configure Windows Search manually to include encrypted files or the admin can configure this option with **Group Policy**.

Windows Search ensures that only authorized users can search the contents of encrypted files, by following ACLs and restricting access for users who have the rights to decrypt files. In addition, Windows Search only limits access to encrypted files for local searches. Windows Search does not return encrypted files in search results when the query is started remotely.

## How to enable / disable Index Encrypted Files feature in Windows 10

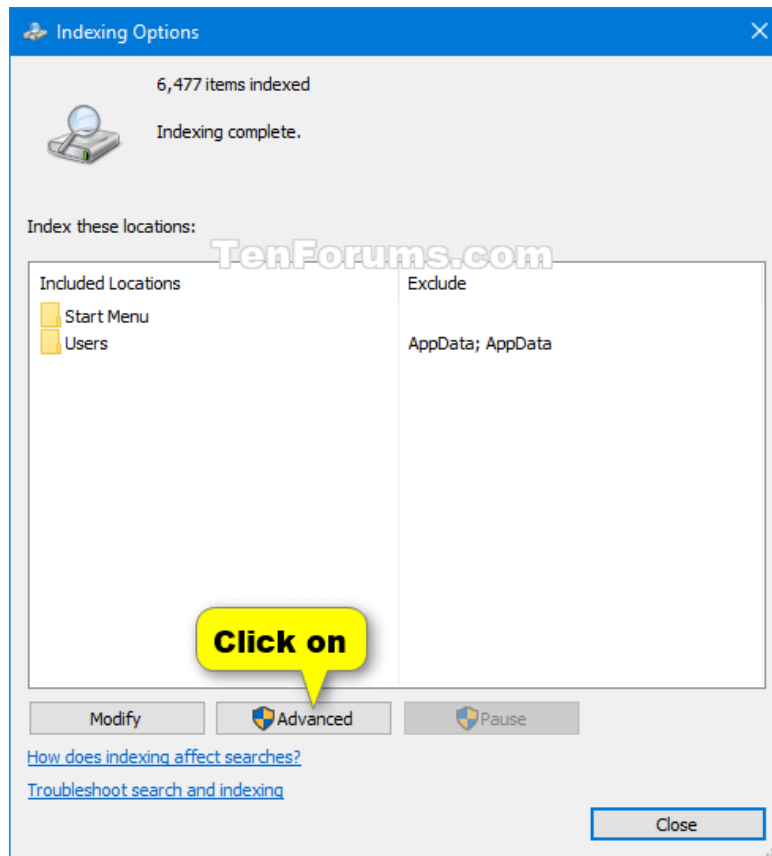
This guide will show you how to enable or disable the Index Encrypted Files feature for indexing encrypted files in Windows 10.

**Note** : You must be logged in as an administrator to make changes.

For security reasons, the Index Encrypted Files feature should not be enabled unless the search index location itself is protected by encrypting the entire volume (such as BitLocker Drive Encryption or a 3rd party solution).

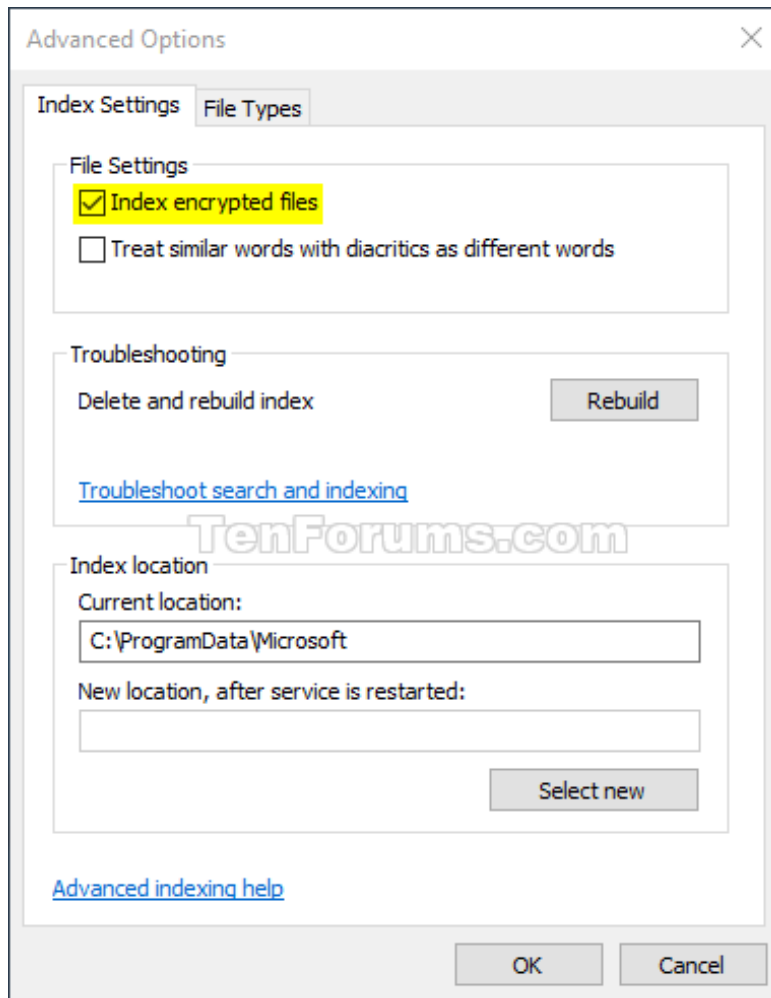
Here's how:

1. Open Control Panel (icon view), click the **Indexing Options** icon and close **Control Panel**.
2. Click the **Advanced** button .



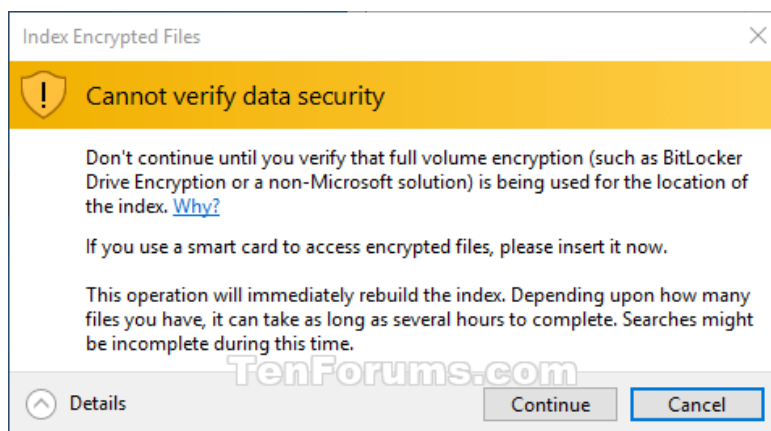
Click the Advanced button

3. Follow step 4 (to turn on) or step 5 (to turn off) below for what you want to do.
4. To enable Index Encrypted Files:
  - A) Check the **Index encrypted files** box.



Check the Index encrypted files box

B) If the index location is not encrypted, click **Continue** if you are sure.

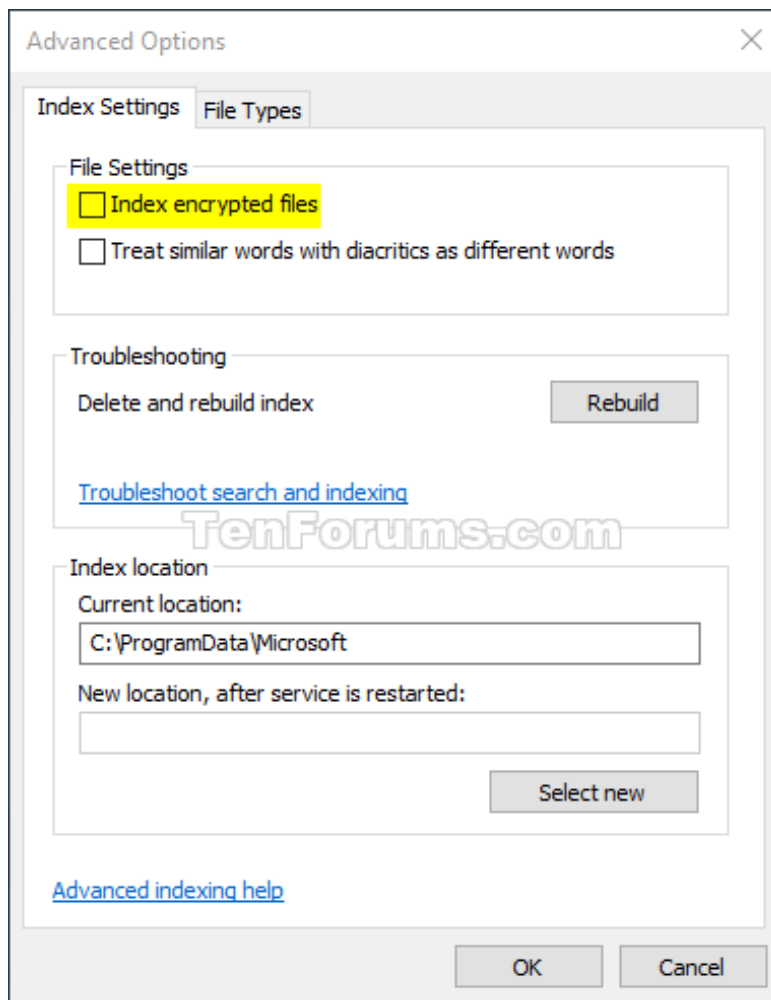


Click Continue

C) Go to step 6 below.

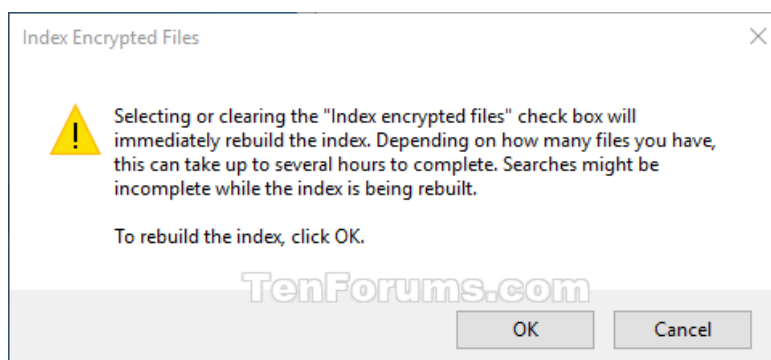
5. To turn off Index Encrypted Files:

A) Uncheck the **Index encrypted files** box.



Uncheck the Index encrypted files box

B) Click **OK**.

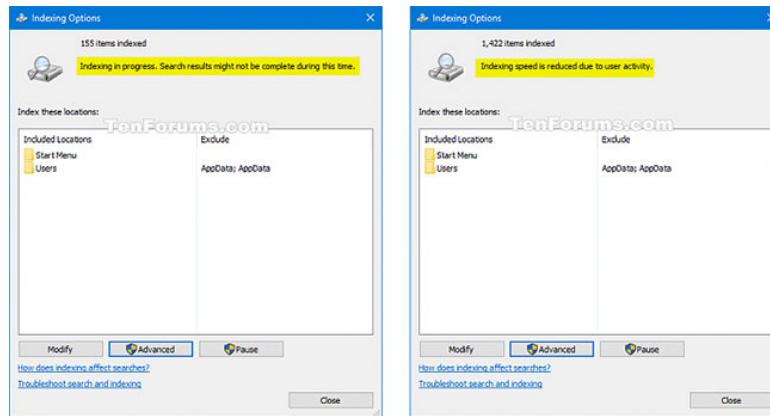


Click OK

C) Go to step 6 below.

6. Click **OK** to apply the changes.

7. The search index will now be rebuilt to update changes.



The search index will now be rebuilt to update changes

8. Click **Close**.

You finished reading the article "**How to enable / disable Index Encrypted Files feature in Windows 10**" edited by the [TipsMake](#) team. We hope this article has provided you with many useful tech tips and tricks. You can search for similar articles on tips and guides. Thank you for reading and for following us regularly.