

# How to enable / disable automatic restart when BSOD error is encountered in Windows 10

When Windows encounters BSOD problems, you can automatically reboot the system. Not only for BSOD errors, whenever the system crashes, it will try to automatically reboot.

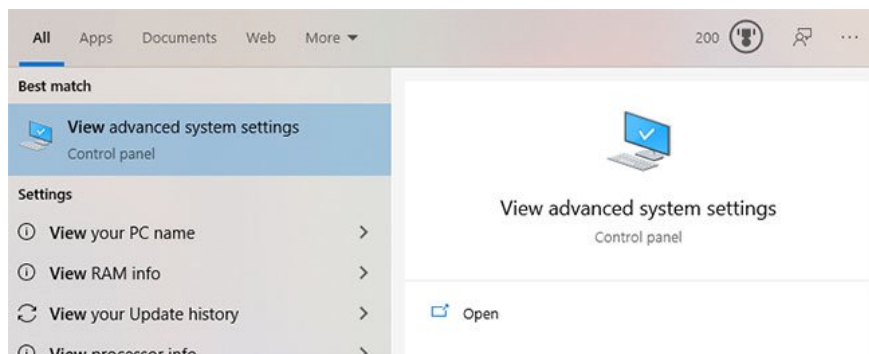
When Windows encounters BSOD problems, you can automatically reboot the system. Not only for BSOD errors, whenever the system crashes, it will try to automatically reboot.

If you dislike this automatic reboot behavior and want the system to show a BSOD error until you reboot the system manually, you can turn off the automatic restart feature when you encounter a BSOD error in Windows. . How to do the following.

## Turn on / off the automatic restart feature when encountering BSOD error from Startup & Recovery

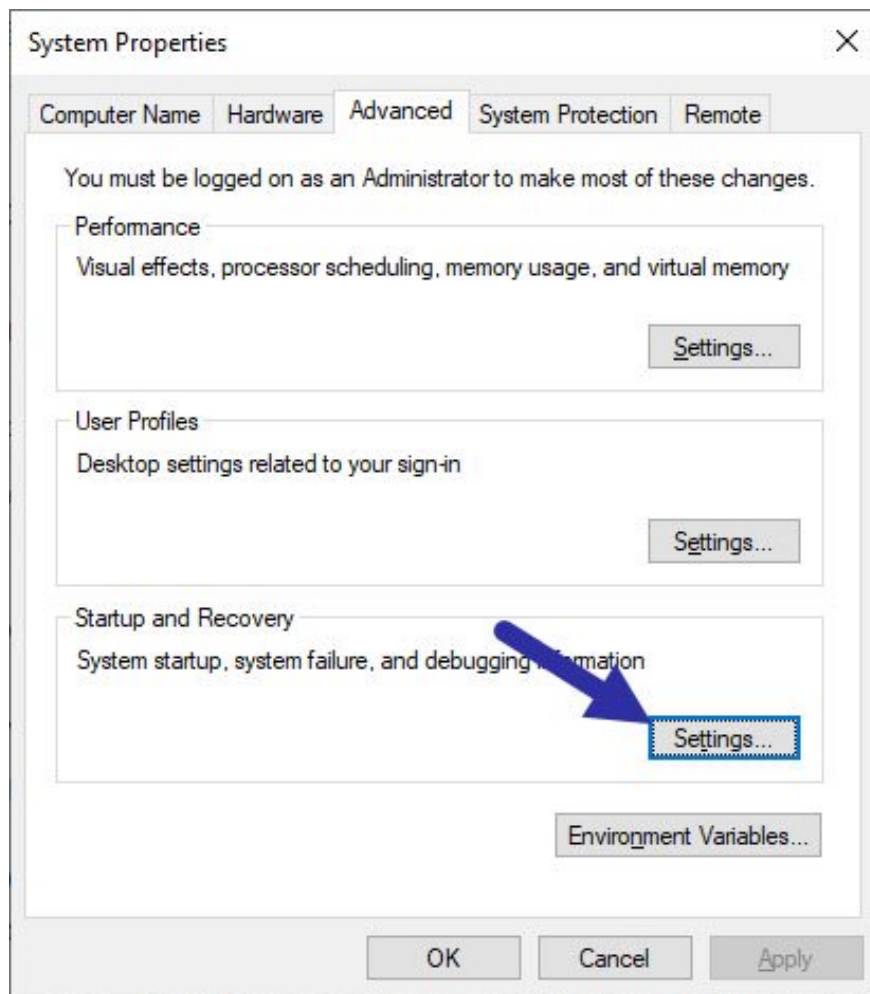
**Advanced System Properties** has a dedicated option to quickly enable or disable automatic restart of Windows. All you have to do is convert a checkbox to done.

1. First, open the **Start** menu, search for "**View advanced system settings**" and click the result to open the **Advanced System Properties** window. Alternatively, you can use the Run command "**SystemPropertiesAdvanced.exe**".



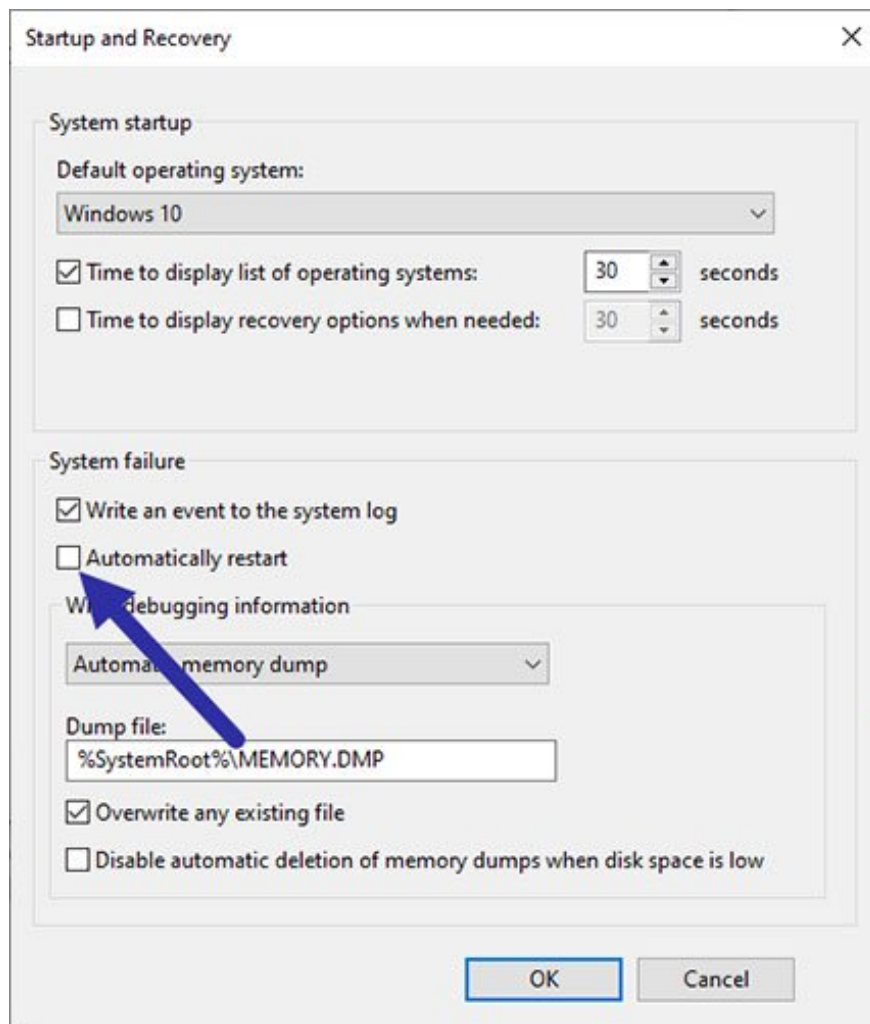
Open the Advanced System Properties window

2. In the **System Properties** window, click the **Settings** button in the **Startup and Recovery** section .



Click the Settings button in the Startup and Recovery section

3. Now, clear the **Automatically restart** checkbox to turn off automatic restart. If you want to enable automatic reboot, select the checkbox again. Click the **OK** button to save changes.



Clear the Automatically restart checkbox

From now on, depending on your configuration, Windows will automatically restart or not.

## Enable / disable automatic restart when encountering BSOD error via Command Prompt

Alternatively, you can also use a simple command to turn off the automatic restart. Of course, you can also use this same command with a small change to activate the function.

1. First, open Command Prompt with admin rights.
2. In the **Command Prompt** window, execute the command below as needed.

1. To disable:

```
wmic RecoverOS set AutoReboot = False
```

1. To activate (this is the default option):

```
wmic RecoverOS set AutoReboot = True
```

As soon as you execute the command, the function will be changed immediately. No need to reboot.

You finished reading the article "**How to enable / disable automatic restart when BSOD error is encountered in Windows 10**" edited by the [TipsMake](#) team. We hope this article has provided you with many useful tech tips and tricks. You can search for similar articles on tips and guides. Thank you for reading and for following us regularly.

---