

How to enable Dark Mode in IDM

Using IDM in the evening with its bright interface can easily cause eye strain. To reduce this, why not enable Dark Mode in Internet Download Manager (IDM) to protect your eyes?

IDM (Internet Download Manager) is a popular file download manager worldwide. In the latest update, version 6.37, the company fixed several basic bugs and integrated Dark Mode and the Neon toolbar features into Windows 10.

With Dark Mode, you can easily switch the IDM interface from a light color scheme to a darker one to save power, ease eye strain, and enhance the software's aesthetics. If you don't know how to enable dark mode, you can refer to our guide below **on how to turn on Dark Mode in IDM**.



How to enable Dark Mode in IDM, a trick to turn on IDM's dark mode on Windows 10.

Instructions on how to enable Dark Mode in IDM

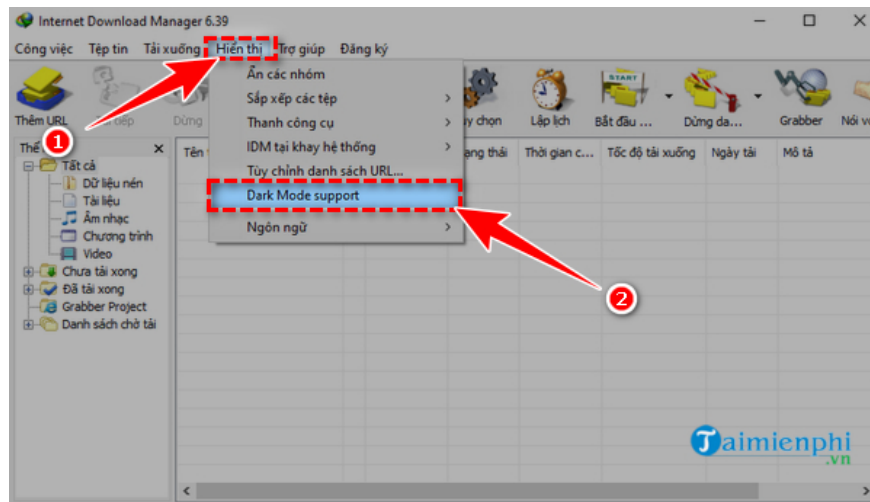
As mentioned above, the Dark Mode feature was recently updated in IDM version 6.37. Therefore, to enable this feature, you need to download the latest version.

If you are using an older version of IDM, you need to update the software to the latest version. Details on how to update IDM have been shared by TipsMake in this article; please refer to it for more information.

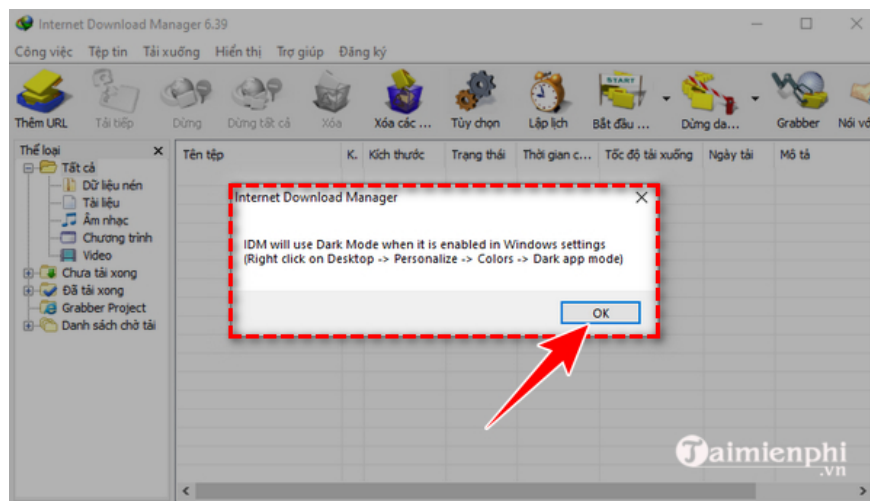
Next, to enable Dark Mode in IDM, you need to follow these steps:

Step 1: Launch the IDM software on Windows 10.

Step 2 : On the IDM toolbar, click " **Show** " and then select " **Dark Mode support** ".

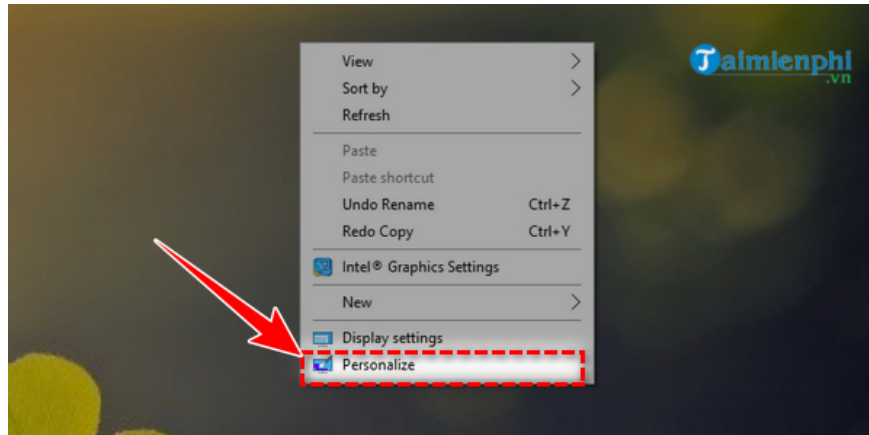


Step 3 : Next, a message will appear stating " **IDM will use Dark Mode when it is enabled in Windows settings (right-click on desktop => personalize => colors => Dark app mode)** " or IDM will use Dark Mode when it is enabled in Windows settings. To continue, press " **OK** ".

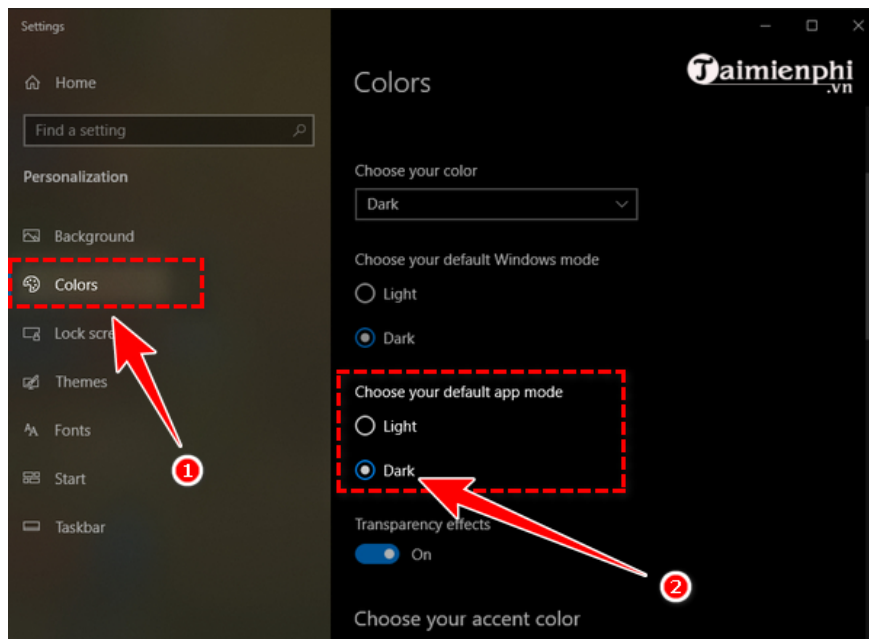


Step 4 : Change the dark mode settings on Windows.

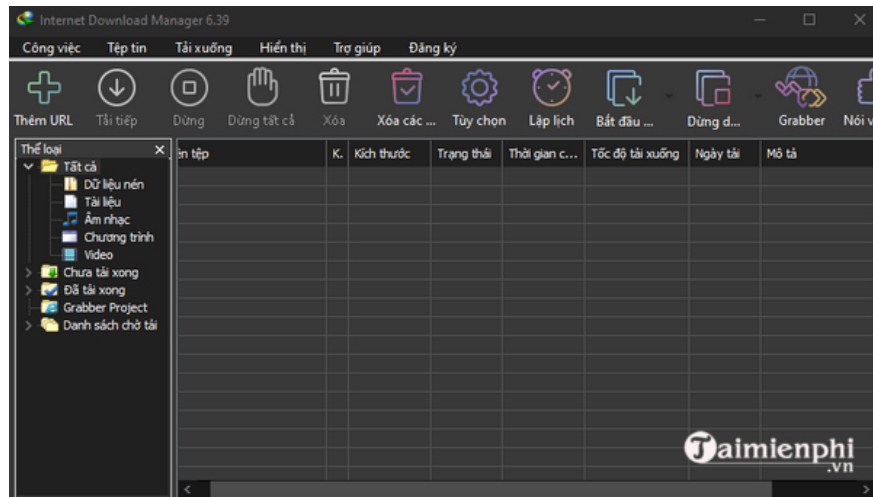
On your desktop, right-click and select " **Personalize** ".



+ In the Windows settings interface, select " **Color** " and then select " **Dark** " in the " **Choose your Default app mode** " section.



Step 5: Return to the IDM software interface. You will see that Dark Mode has been applied, and the IDM background has changed from light to dark.



After enabling dark mode, if you no longer wish to use it, you can disable Dark Mode in IDM by selecting " **Display** " from the IDM menu bar and unchecking the " **Dark Mode support** " feature. IDM will then prompt you to restart the software; after restarting, IDM will disable its Dark Mode feature.

We have shared and compiled detailed instructions on how to enable Dark Mode in IDM in this article. Please refer to it and use it to find the best IDM interface that suits you!

Along with learning how to enable dark mode in IDM, enabling and disabling Dark Mode on browsers is also a popular computer trick. If you don't know how to do it, you can refer to the following article on how to quickly and easily disable or **temporarily turn off IDM** on browsers.

You finished reading the article "**How to enable Dark Mode in IDM**" edited by the [TipsMake](#) team. We hope this article has provided you with many useful tech tips and tricks. You can search for similar articles on tips and guides. Thank you for reading and for following us regularly.