

How to effectively fix the IDM error of not capturing YouTube links on Chrome

When using IDM, users may encounter the error 'IDM doesn't capture YouTube links' on Chrome. This is a rather annoying bug that prevents users from downloading their favorite videos. If you are experiencing this bug, you can refer to some ways to fix the IDM not capturing YouTube links on Chrome error below.

Although IDM has attracted hundreds of millions of users thanks to its high-speed file download capabilities, this software still has some common bugs in Google Chrome that frustrate many people, especially the **IDM error where it fails to capture YouTube links on Chrome**, preventing you from downloading your favorite videos.



Fixing the issue where IDM doesn't capture YouTube links on Chrome.

Reasons why IDM fails to capture YouTube links on Chrome.

This error is quite common among many users and can stem from several different causes, such as:

- The user is using an outdated version of IDM, causing incompatibility with the Google Chrome browser.
- The YouTube platform does not recognize the IDM Extension.
- The Chrome extension was not enabled after installation.
- The computer may be infected with a virus.
- The trial version of the software has expired.
- The user may be using a pirated version.

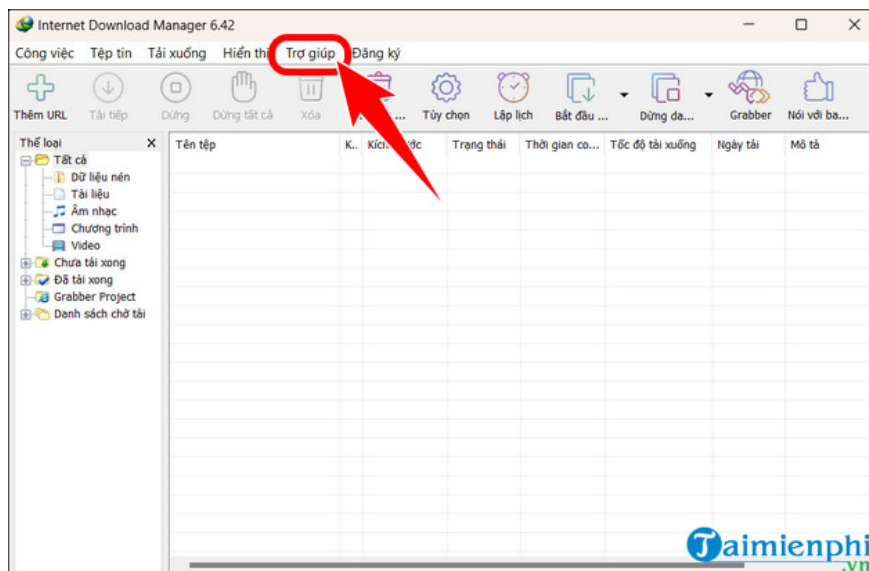
How to fix IDM not capturing YouTube links on Chrome

There are many methods to fix the Internet Download Manager error where it doesn't capture YouTube links on Google Chrome. The method below can completely fix this error, so please follow the instructions.

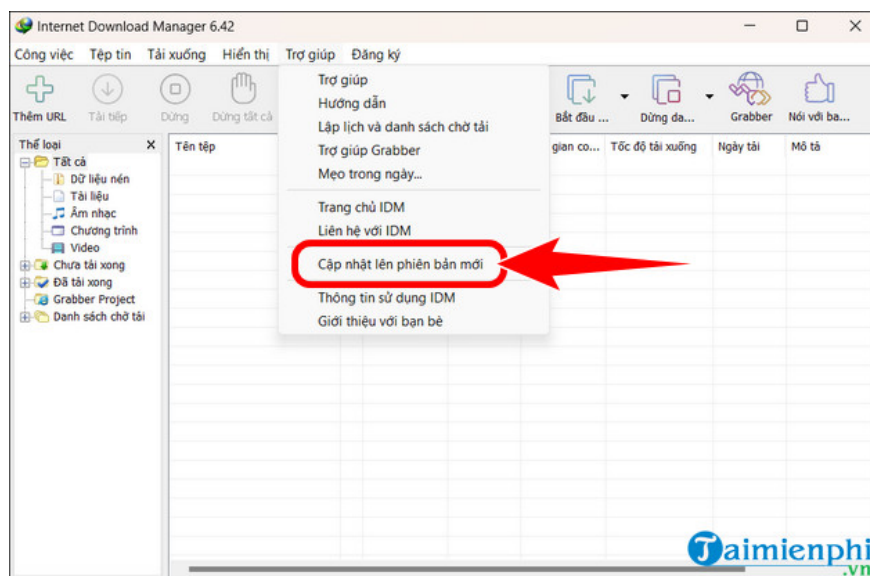
1. Update your software to fix the issue where IDM doesn't capture YouTube links on Chrome.

One of the reasons for this error might be that you are using an outdated version, causing IDM to be incompatible with the Google Chrome browser. To fix this, users simply need to **update IDM to the latest version**.

*Step 1: Open the **IDM** software, and on the main interface, select **Help**.*



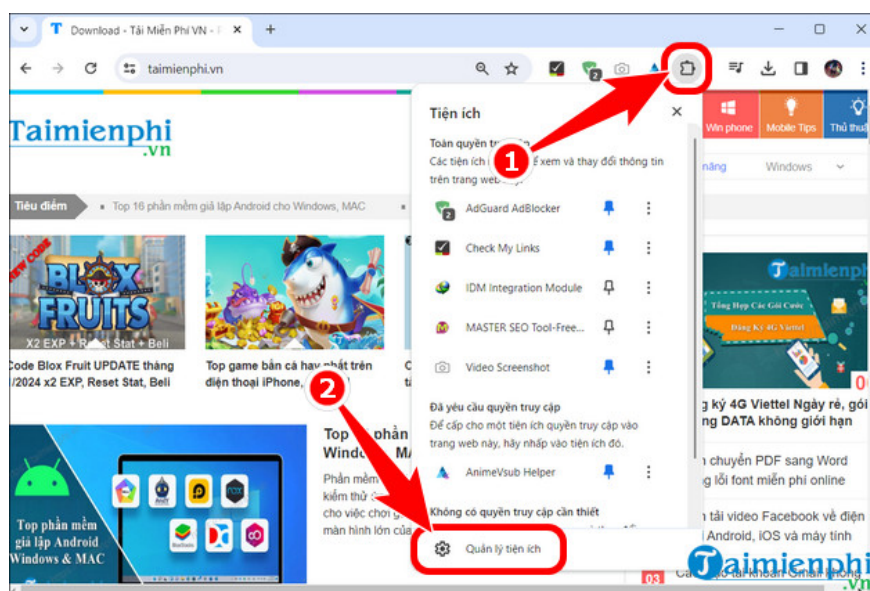
*Step 2: Click **Update to the latest version**.*



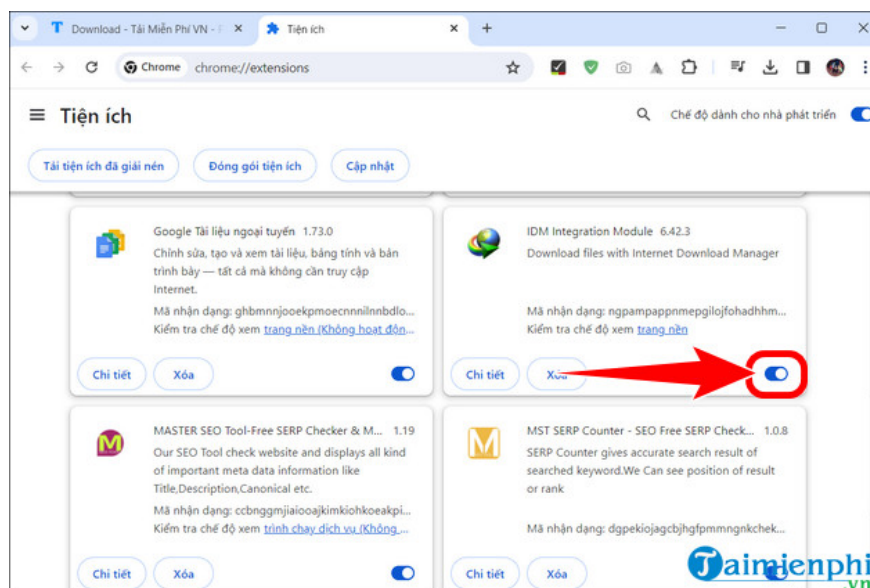
2. Enable the extension to fix the IDM error of not capturing YouTube links on Chrome.

When IDM fails to capture YouTube links on Chrome, it's likely because the browser extension was disabled after installation. To resolve this, simply follow these steps:

Step 1: Open **Google Chrome** , click **the extension icon** => select **Manage extensions** .



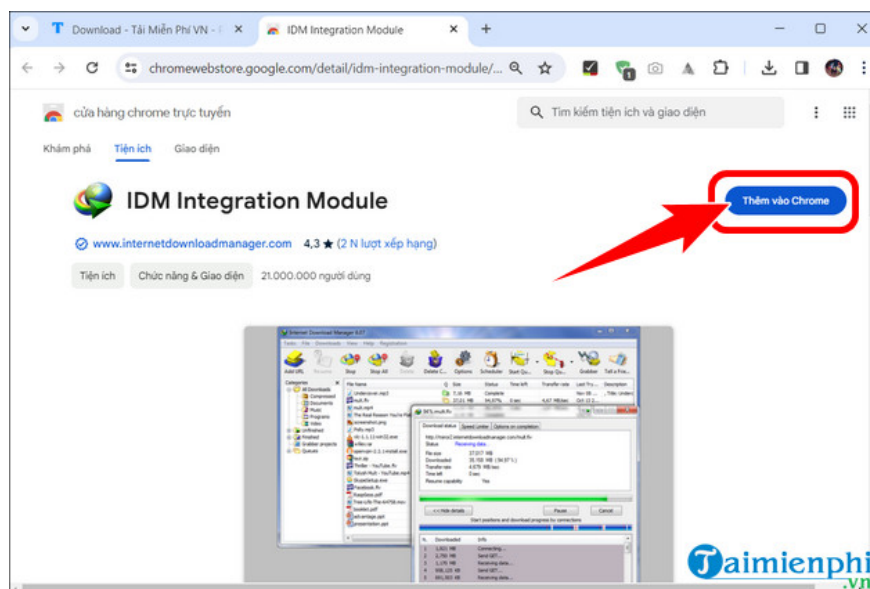
Step 2: Toggle **the IDM Integration Module Extension switch on** .



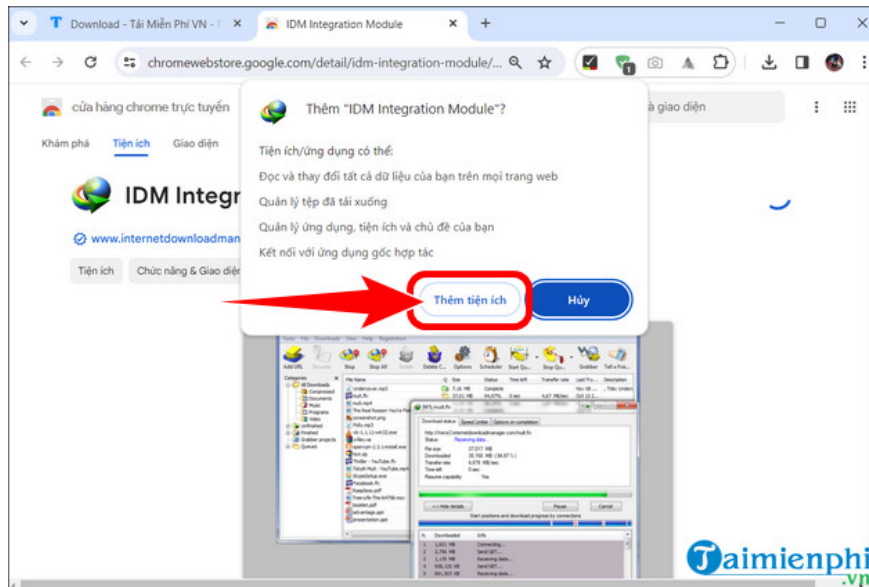
3. Reinstall the extension to fix the IDM error where it doesn't capture YouTube links on Chrome.

If the IDM Extension is enabled but still fails to fix the issue of IDM not capturing YouTube links on Chrome, you need to download and reinstall the extension on your browser to fix the problem.

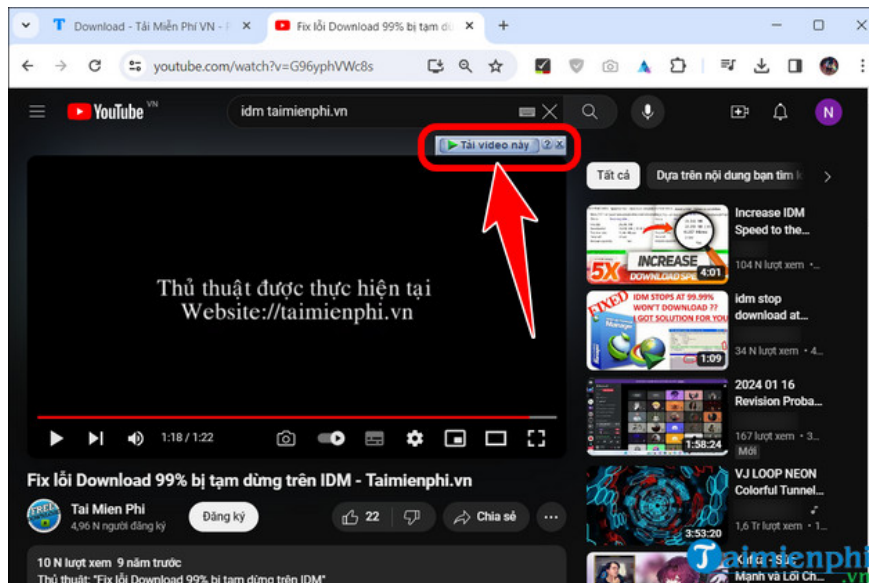
Step 1: Access the IDM extension link for Google Chrome **HERE** => click **Add to Chrome** .



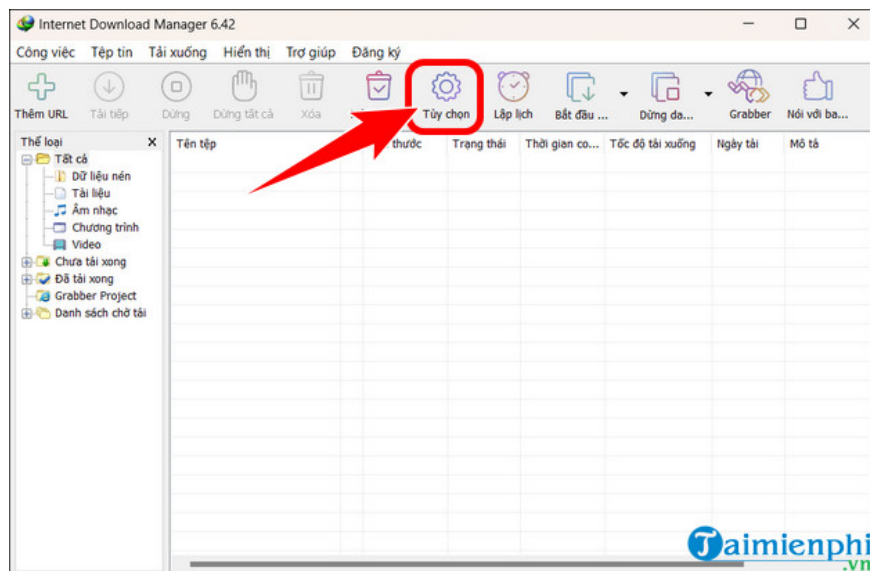
Step 2: Click **Add extension** .



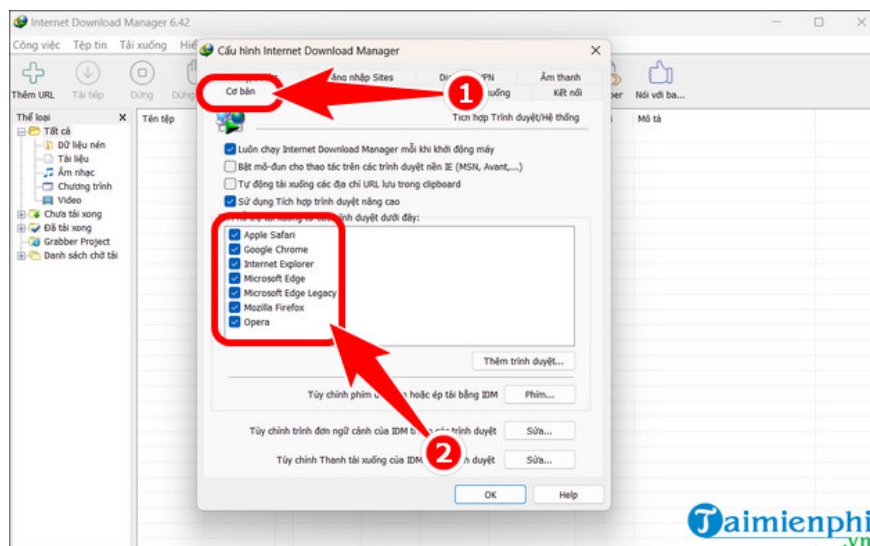
- Check if the " **Download this video**" button is displayed as shown below. If not, proceed to the next step.



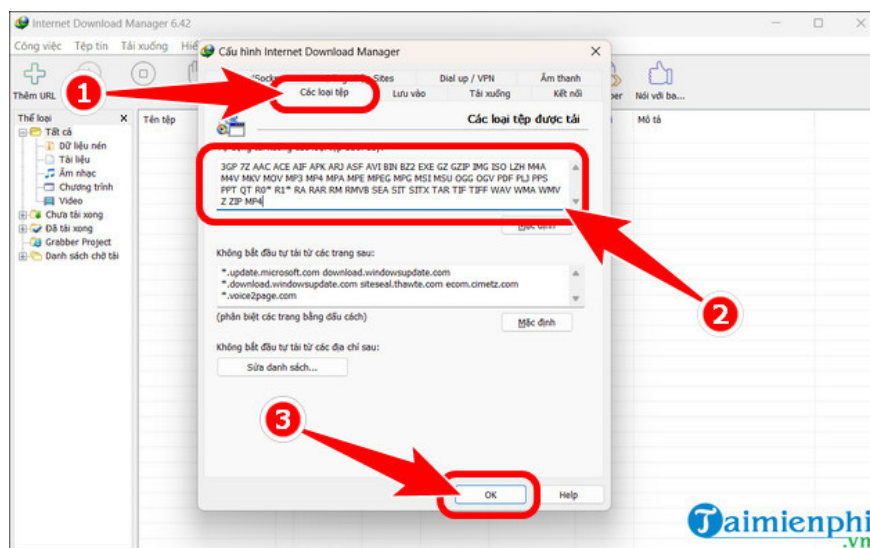
*Step 3: Open the **IDM** tool , click **Options** .*



- Select the **Basic** option => check the box to allow the software to download from the following browsers, including **Google Chrome** .



- Go to **File Types** => add **MP4** to the file type box => **OK** . Then, **restart your browser** and check if the error has been resolved.



4. Fix IDM not capturing YouTube links by uninstalling and reinstalling.

If the above methods don't fix the IDM not capturing YouTube links on Chrome, you can uninstall the software and install the **IDM Silent** version on your computer or laptop. The download and installation process is quite simple, quick, and completely free.

Above are some fixes for IDM not capturing YouTube links on Chrome that you can apply to effectively resolve the issue. Additionally, while using IDM, you can also speed up IDM to download large files and utilize your internet bandwidth more efficiently.

You finished reading the article "**How to effectively fix the IDM error of not capturing YouTube links on Chrome**" edited by the [TipsMake](#) team. We hope this article has provided you with many useful tech tips and tricks. You can search for similar articles on tips and guides. Thank you for reading and for following us regularly.