

# How to effectively fix the blue screen error on Windows 11, 10, 8, and 7 computers.

The Blue Screen of Death (BSOD) is a common problem on Windows 11, 10, 8, and 7 caused by driver conflicts, hardware errors, or viruses. When this happens, the computer may automatically restart, interrupting your work. Below are the common causes and effective solutions.

A blue screen error can be caused by driver conflicts, faulty RAM, or a virus. Check your hardware, update your drivers, and scan for viruses to resolve the issue quickly.

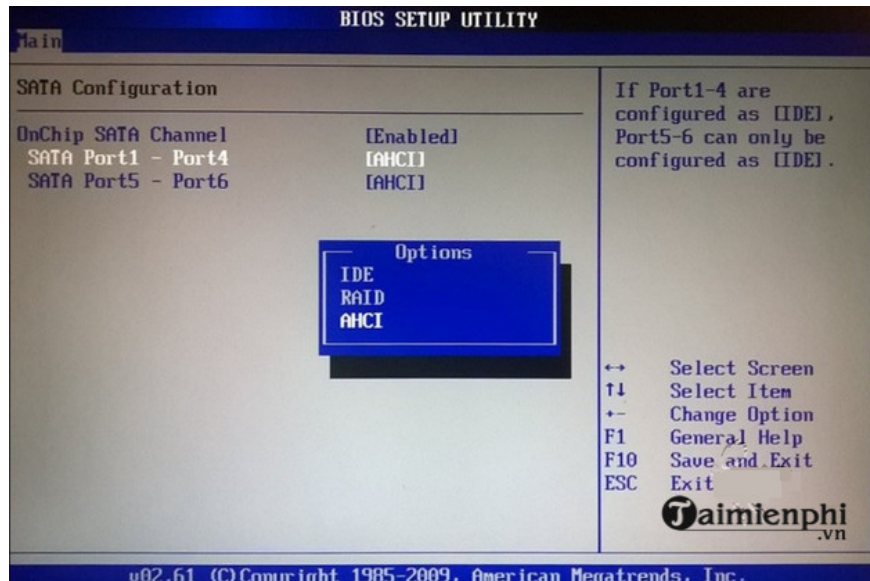
## Table of Contents:

1. Computer crashes upon Windows startup
2. Incorrect or conflicting Windows drivers
3. Virus infection
4. Disable third-party services
5. Graphics card driver or related hardware errors

## *1. Fixing the issue of a computer crashing upon startup.*

In this case, it can be confirmed that the cause is a hardware fault. You need to check your hard drive and RAM. - For the hard drive, it could be due to selecting the wrong hard drive connection standard. Restart your computer, press the F2 or Del key to enter **the BIOS** . Many computer models have different ways to access the BIOS, and if you don't know how, you can refer to our previous guide on how to access the laptop BIOS.

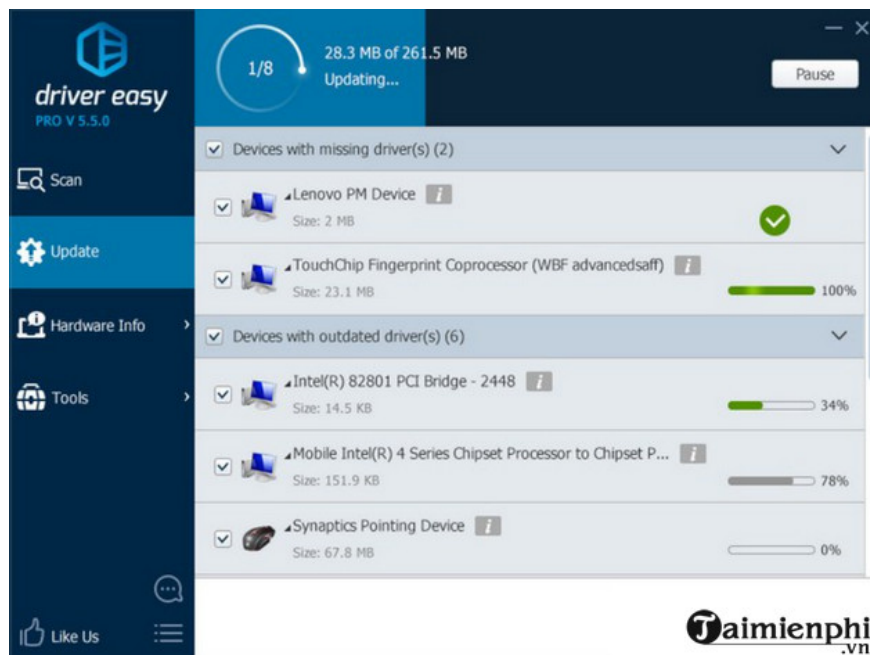
Next, go to **Boot** , select **SATA Configuration** , and if it's currently set to **IDE** , change it to **AHCI** , or vice versa.



- For RAM, you can remove it and use a paper or cloth to clean the slot and the copper pins of the RAM stick, then try plugging it back into a different slot to see if the problem persists. If it still happens, you can try a different stick and then boot up the computer to check again.

## ***2. The Windows driver is incorrect or conflicting.***

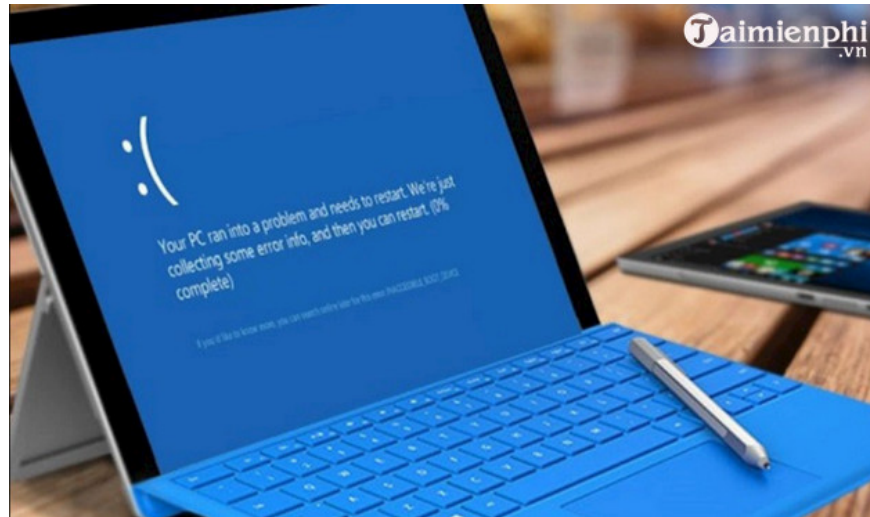
If the blue screen error is caused by this issue, you should upgrade the drivers your computer is using by using the latest version of DriverEasy.



To find and update new drivers for your computer, please refer to the article on how to update drivers using DriverEasy.

### ***3. The computer displays a blue screen error due to a virus infection.***

If your computer is infected with a virus, it can cause software conflicts, which is one of the reasons your computer screen turns blue. Therefore, you need to install antivirus programs (such as **KIS** or **AVG** ) and run a scan to fix the error.

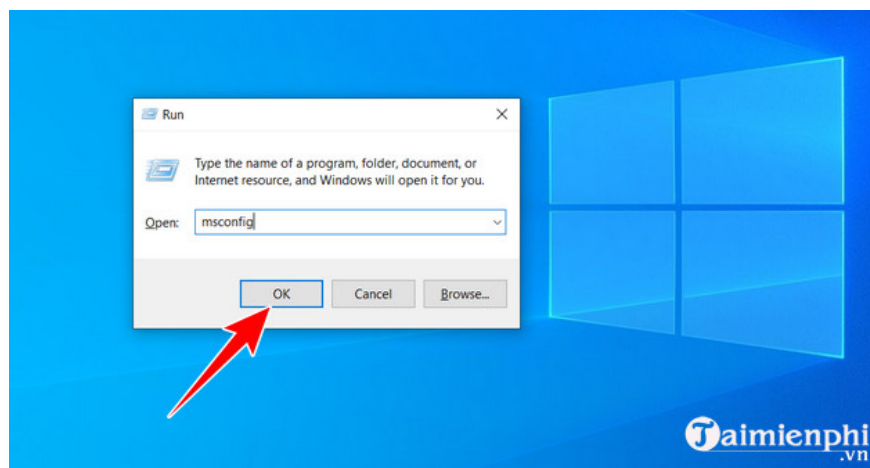


Additionally, you can also choose one of the top most powerful antivirus software programs to find and eliminate dangerous viruses, malware, trojans, and system errors.

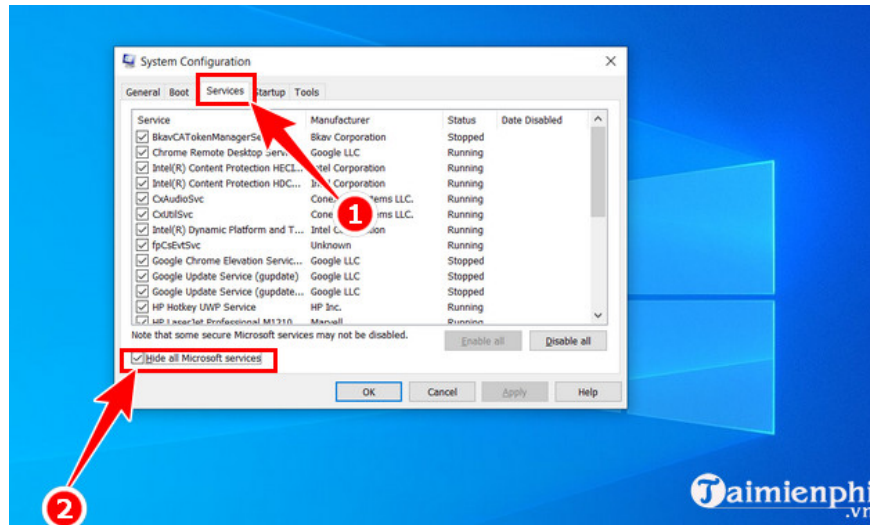
### ***4. Turn off third-party services.***

Sometimes, third-party services installed during use can conflict with the system. Therefore, fixing the blue screen of death by disabling third-party services, preventing them from running during the Windows startup process, is quite effective. This is also a way to **speed up** your computer or laptop's startup.

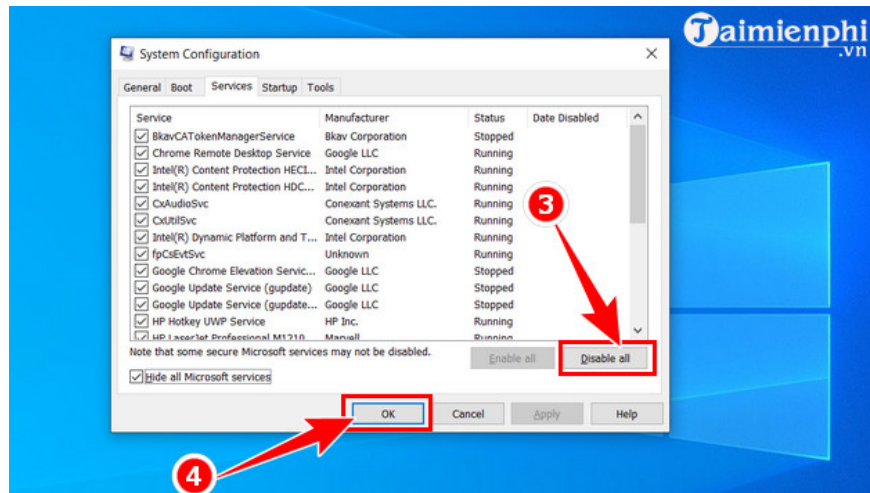
**Press the Windows + R** key combination to open the Run dialog box. Here, type **msconfig** to access the System Configuration window.



In the System Configuration window, switch to the **Services** tab to manage services. Here, check the "**Hide all Microsoft Services**" option to hide Microsoft services and avoid accidentally disabling system services.



Click "**Disable all**" to turn off all third-party services such as Bluestacks (Bluestacks Android Service, Bluestacks Plus Android Service), Google (Google update service), then click **OK** to save your changes. At this step, if you don't select "**Disable all**," you can choose individual services that you suspect are causing the error.

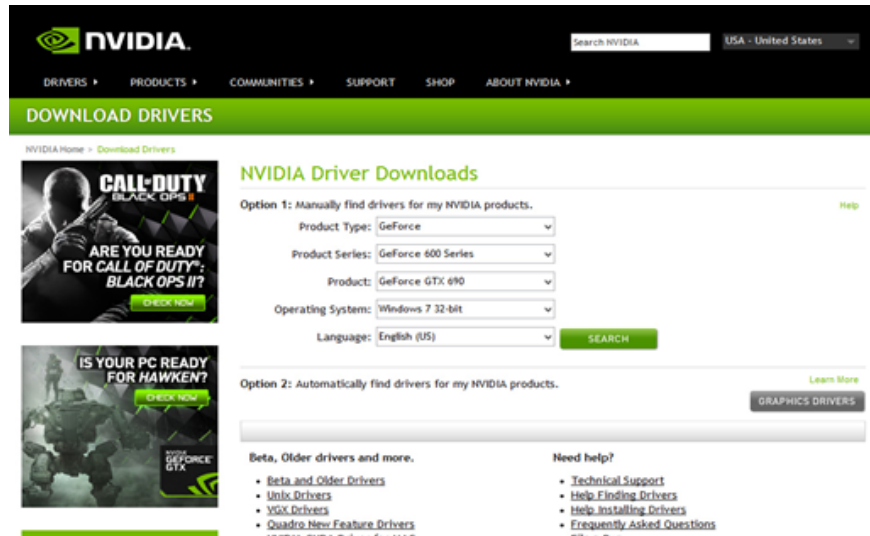


## 5. Graphics card driver error or graphics-related hardware error.

This problem usually arises from a driver error, most commonly the graphics card driver or some other video/graphics-related hardware.

- Reinstall or update the driver for your graphics card.
- Disable hardware acceleration using the graphics chip: Note that this is only a temporary solution; in the long run, there's no reason to disable such a great feature. How to do this: Go to **Start** > type "**Display**" in the search box. Go to **Change Display Settings** > **Advanced Settings** > **Troubleshoot** > **Change Settings**. Here, toggle the "Hardware acceleration" switch to the off position (none). Then restart your computer.
- Replace the graphics card: This is the last resort when all the above methods fail. If the card is damaged, you

can take it for warranty repair or buy a new one, depending on the situation.



If your computer is constantly displaying the Blue Screen of Death (BSOD) or specific error codes, try each method to pinpoint the exact cause. If you have experience dealing with the Blue Screen of Death (BSOD), please share it in the comments to help the Windows user community.

You finished reading the article "**How to effectively fix the blue screen error on Windows 11, 10, 8, and 7 computers.**" edited by the [TipsMake](#) team. We hope this article has provided you with many useful tech tips and tricks. You can search for similar articles on tips and guides. Thank you for reading and for following us regularly.