

How to effectively fix a CD-ROM drive that won't read a disc.

CD-ROM drives are essential devices for reading data from CDs/DVDs. However, after some time of use, problems such as disc recognition failure, tray jamming, or laser reader malfunction often occur. This article will help you understand the causes and how to effectively fix them.

CD-ROM drives can experience various problems such as not recognizing discs, tray jamming, or not displaying in Windows. Checking the hardware, cleaning the laser lens, and updating drivers can help resolve these issues.

Guide to troubleshooting CD-ROM drive errors

If the disc is scratched or damaged, Windows may recognize it for a while after inserting it into the drive, then stop recognizing it.

First, if you've been using it for a long time, you should clean the hard drive.

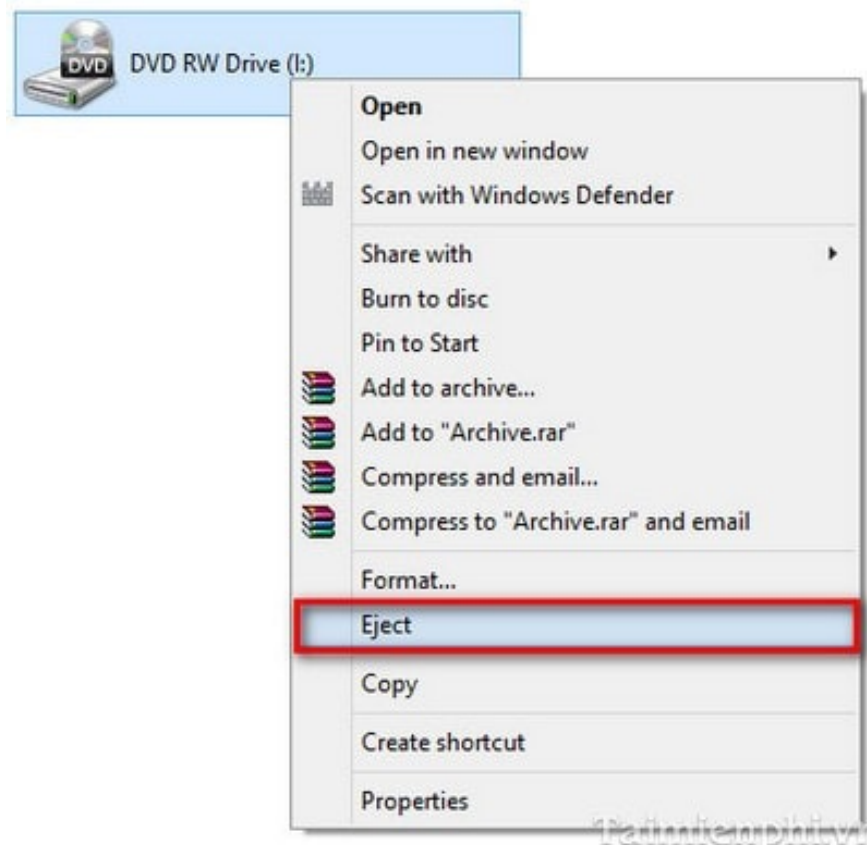


Use a laptop cleaning kit to clean the areas around the drive, especially the optical sensor. Use a soft cloth dampened with a small amount of glass cleaner to clean the drive surface, helping to remove dust and improve disc readability.



If you cannot remove the disc from the tray.

To check if your drive is stuck or jammed, try to fix it so the CD/DVD can eject. Open **Computer** , right-click on the drive, and select **Eject**.



If it still doesn't work, take a small toothpick and look for a small hole on the side of the CD/DVD drive. Insert the toothpick into that hole and wiggle it slightly; the CD/DVD drive will automatically open the tray, allowing you to remove the disc.

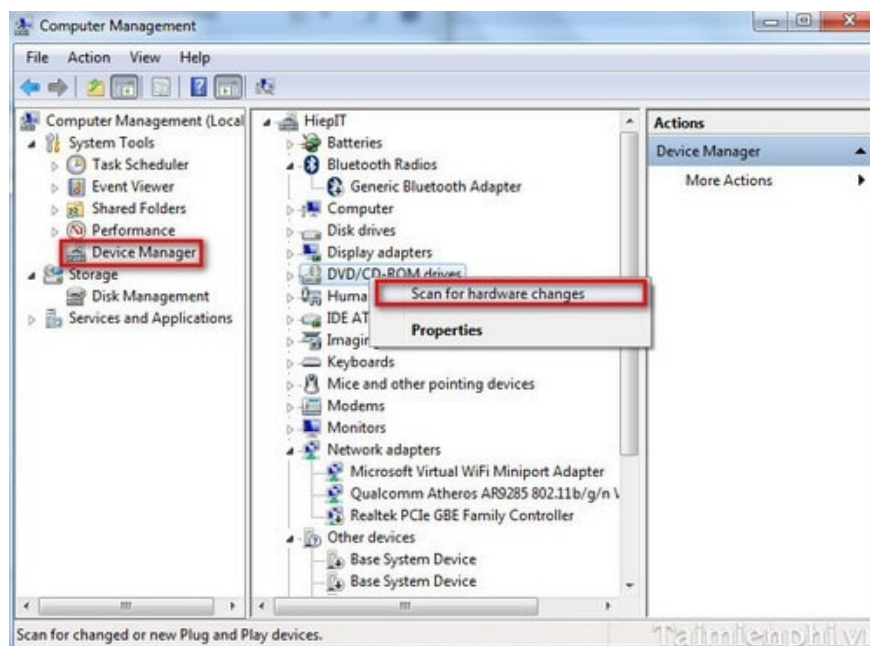


When inserting a disc into a newly purchased CD/DVD drive, it works, but only slightly scratched. On the second, third, or subsequent attempts, it reports that no disc is inserted.

Wipe the disc with a soft cloth to remove dust and dirt. Next, use a new disc to clean the drive's read head, then test again. Finally, try inserting the old disc into the drive to see if the problem has been resolved.



If that doesn't work, go to **Computer** --> **Manage**. A dialog box will appear. Under **Device Manager** , find **DVD/CD-ROM**, then right-click and select **Scan For Hardware Changes** . Restart your computer, insert the disc into the drive, and check.



If your CD-ROM drive is malfunctioning, you can try troubleshooting steps such as cleaning the drive, updating drivers, or checking hardware connections. These measures can help the drive operate more stably, reducing disc recognition issues or tray jams. If the problem persists, consider using support software or replacing the drive to ensure optimal performance.

You finished reading the article "**How to effectively fix a CD-ROM drive that won't read a disc.**" edited by the [TipsMake](#) team. We hope this article has provided you with many useful tech tips and tricks. You can search for similar articles on tips and guides. Thank you for reading and for following us regularly.