

How to edit PDF files with Infix PDF Editor

Infix PDF Editor is PDF editing software, providing full editing features even with encrypted PDF files.

To edit content on PDF files, there are many software or websites online that make it easier to change the content of the file. Users do not need to convert PDF to Word before proceeding to edit. In this article, we will introduce you to the Infix PDF Editor software, edit PDF content.

Infix PDF Editor is lightweight, takes up little resources on the system. The software provides a full range of features to edit PDF files, including encrypted PDF files with a password. We can edit PDF files with Word file interface, create new PDF pages, export PDF files from other text editors, . The following article will guide you how to edit PDF files with Infix PDF Editor.

1. How to edit PDF file using FormSwift online
2. Instructions for editing PDF files in Word 2013
3. Applications that read Excel files on iPhone / iPad quality

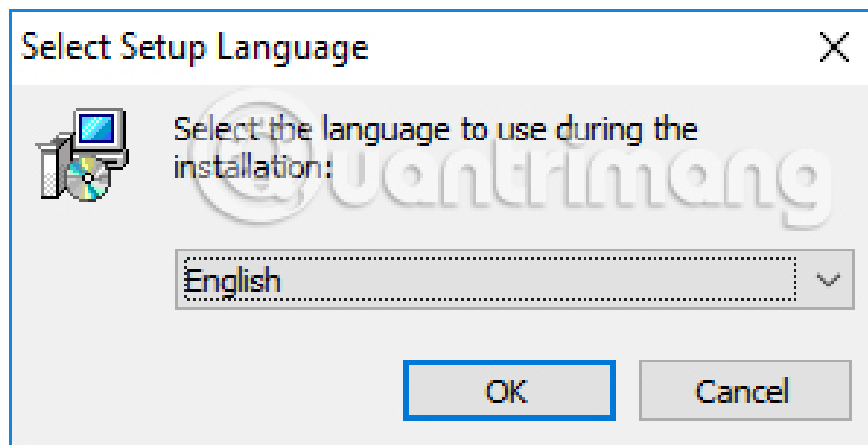
How to use Infix PDF Editor to edit PDF files

Step 1:

Click on the link below to install Infix PDF Editor on your computer.

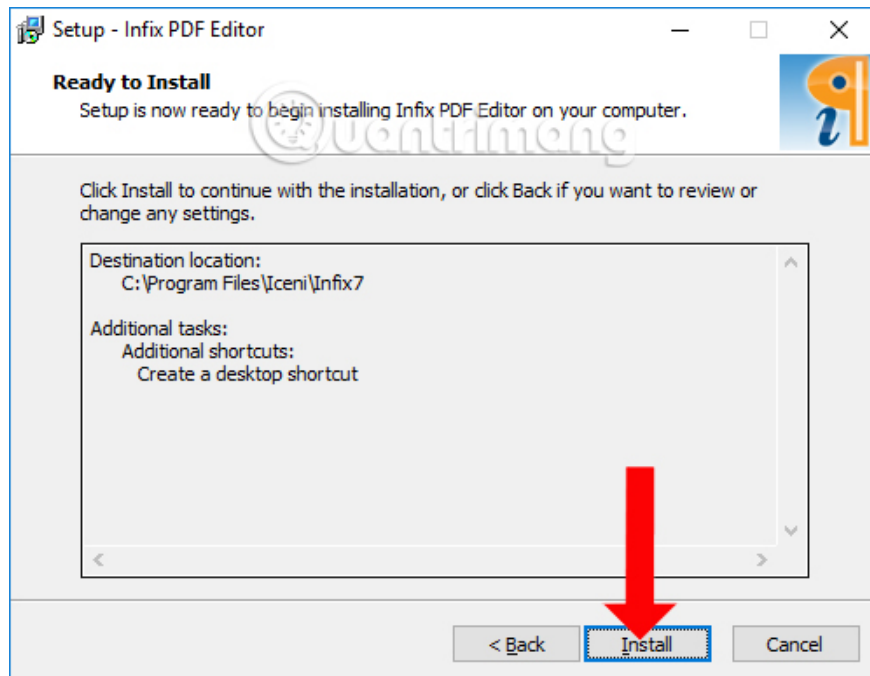
1. Download Infix PDF Editor software

In the first interface select the installation language is English and click OK to proceed.



Step 2:

The software installation process is similar to other software on the computer.

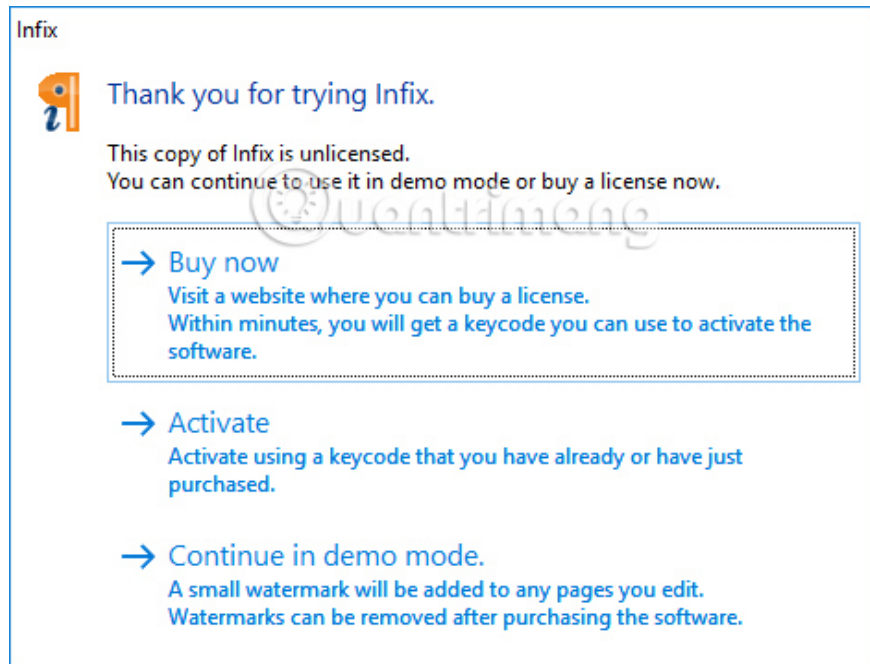


Step 3:

After installation is complete, click on the software icon on the computer. The first interface users will see has 3 options with 3 different content.

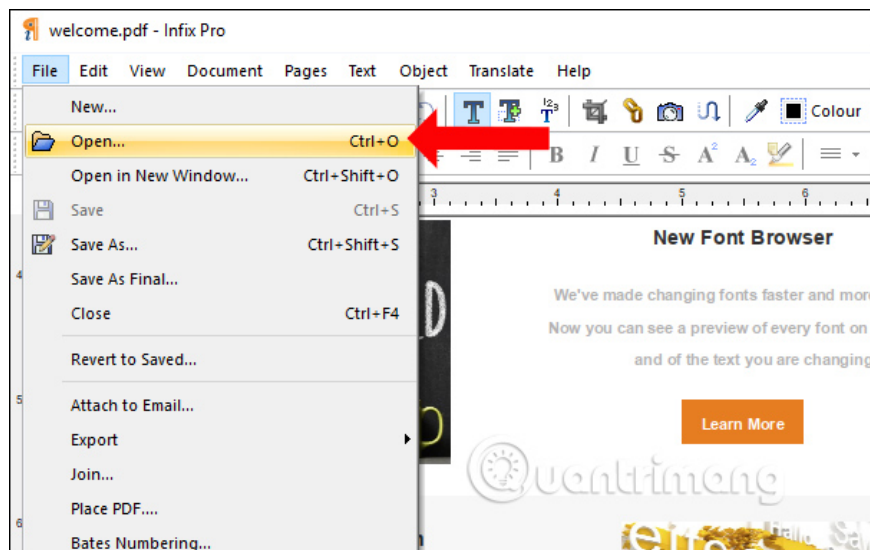
1. Buy now: Buy the copyright of Infix PDF Editor software.
2. Activate: If you already have a license key, enter it to activate now.
3. Continue in the mode: Try the software.

Note to readers, if you have not enabled Infix PDF Editor license, PDF file after editing will appear the logo of the software.



Step 4:

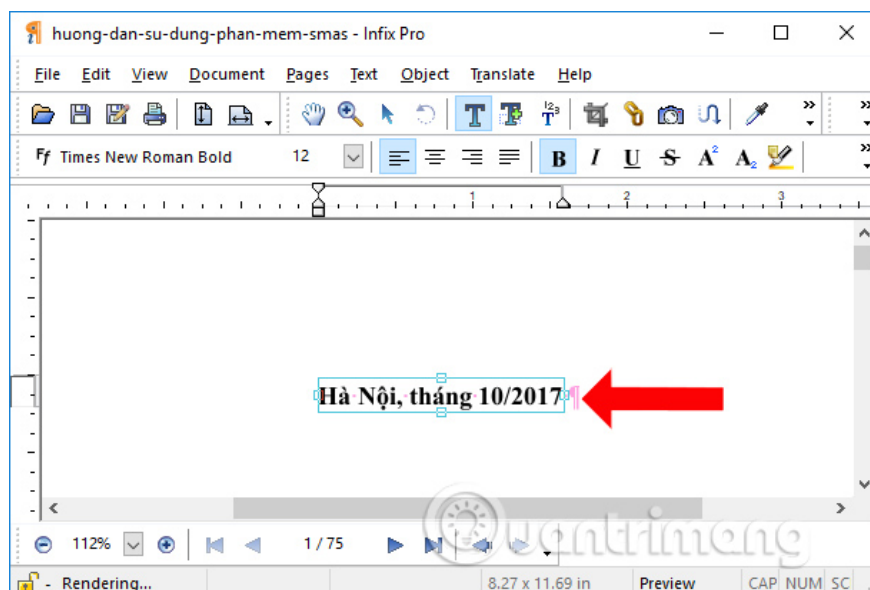
Click on **File** then click on **Open** to open the PDF file to edit the content. Or you can press Ctrl + O.



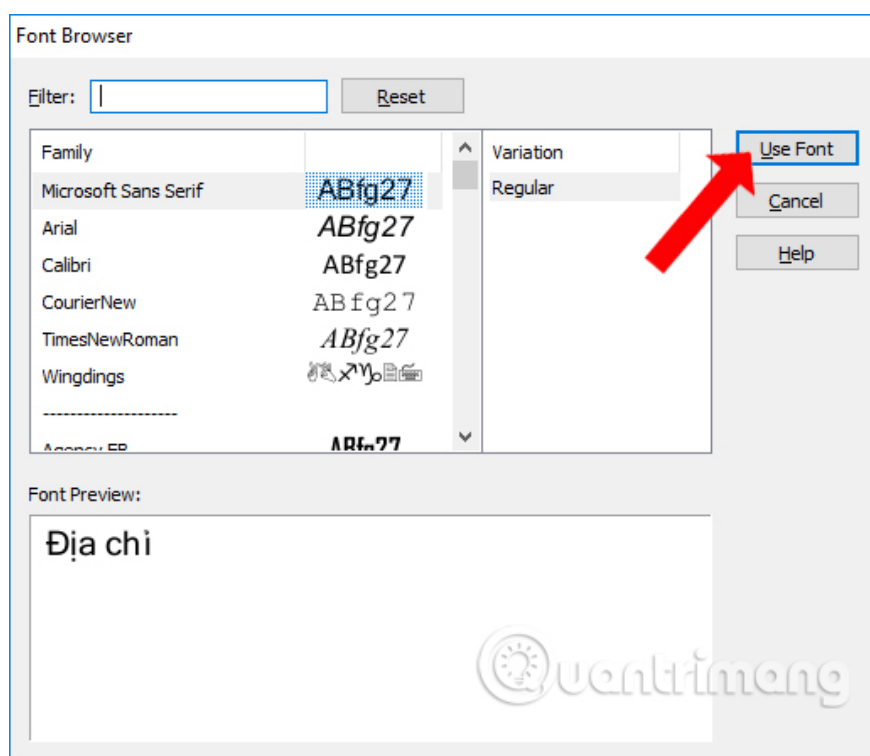
Step 5:

When clicking on any content on a PDF file, we can edit this content. You just need to delete the old content, add new content to the PDF file if needed. Blue frame is used to expand or collapse the text input box.

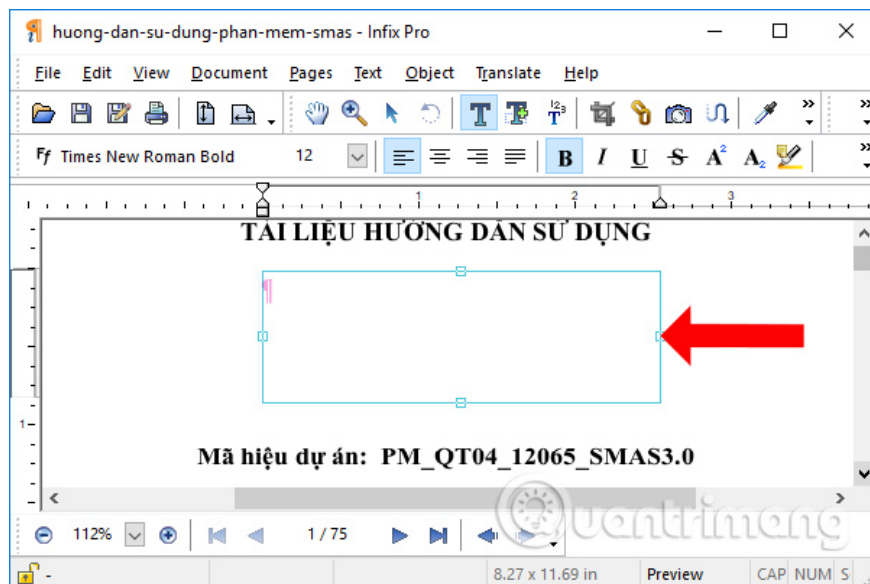
Also on the toolbar is full of options for content, font size, format, position alignment. The interface is quite similar to that on Word.



If you want to use the new font, just click on the existing font in the toolbar. Select the font you want to use and click **Use Font** to apply.

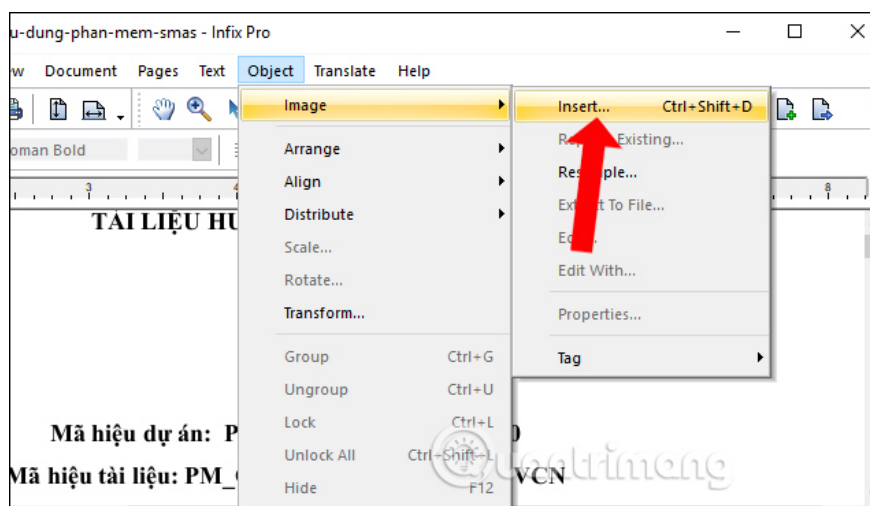


In case you want to add new content, just select the location and create a green frame to insert the content.



Step 6:

To insert images into PDF content, click on the **Object** item select **Image** , choose **Insert** to open the image you want to insert into the content. You can press Ctrl + Shift + D to quickly open the folder. Software supports JPG, TIF, BMP, PNG formats.

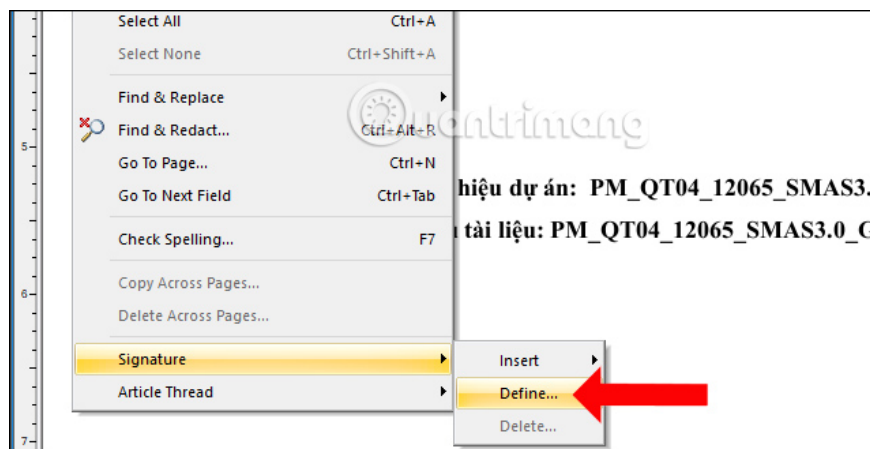


Images when inserted into documents can scale, or change the image position. If you don't want to insert images, press the Delete key. Click on the image to perform the operation.



Step 7:

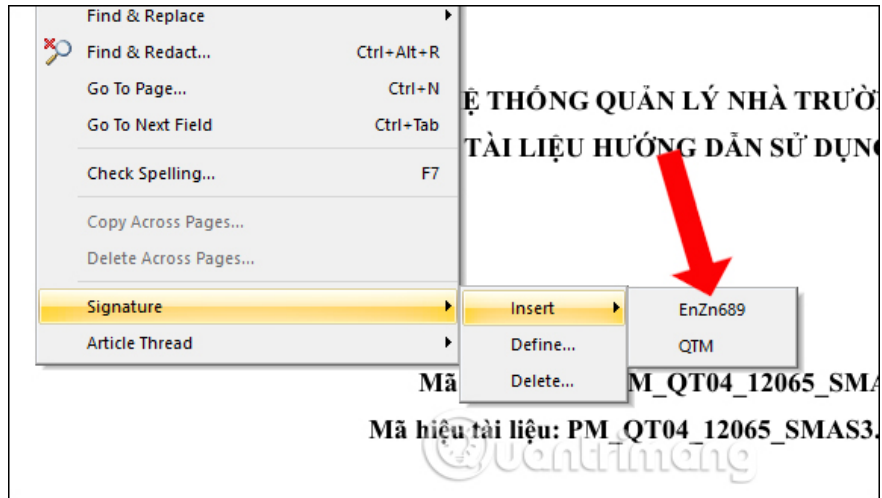
To add a signature to the content of a PDF file, click on the **Edit** section and select **Signature** . Then select **Define** . to open the signature on the computer.



Next **name the signature** to save in Infix PDF Editor's signature library.



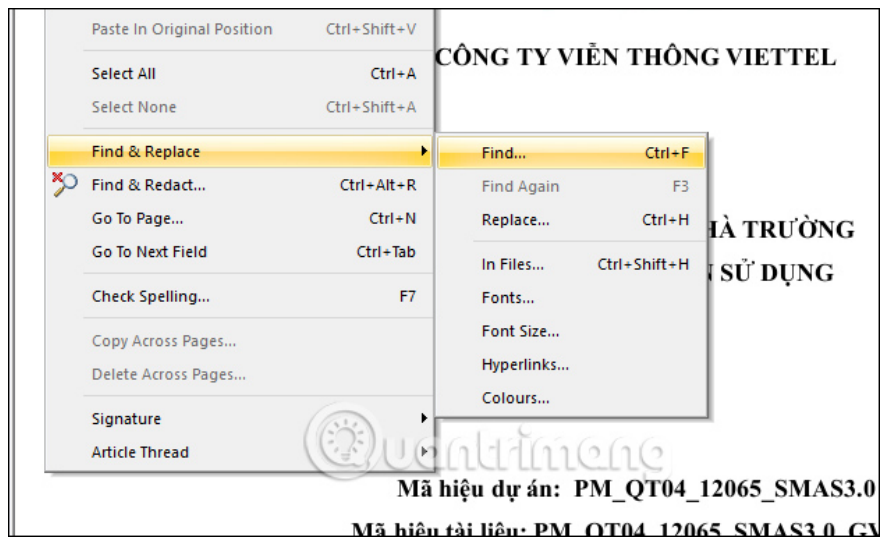
Then select the location you want to insert the signature and then click again on Edit, choose Signature, click on **Insert** and then select the signature you want to insert. Thus, with later PDF documents you can use the signature library on Infix PDF Editor to use.



Step 8:

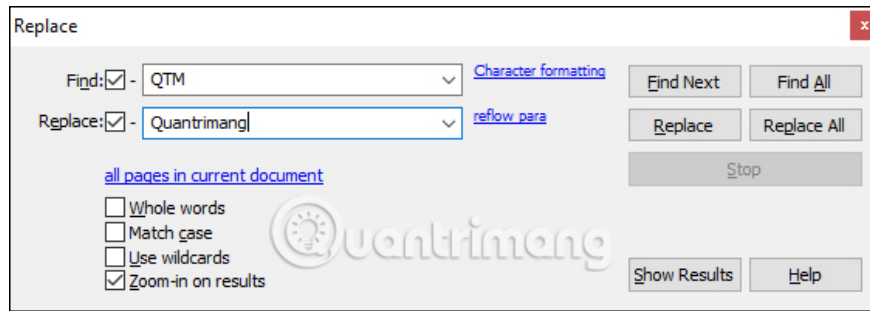
One of the useful points of Infix PDF Editor is that the interface and editing features are quite similar to Word, such as Find & Replace.

Click on **Edit> Find & Replace** and choose Replace or Find. If you want to replace it quickly, select Replace.



In the Replace interface, enter the word you want to edit into the Find box and edit the Replace content. Finally, click Replace to replace the found words, or click Replace All to replace them all.

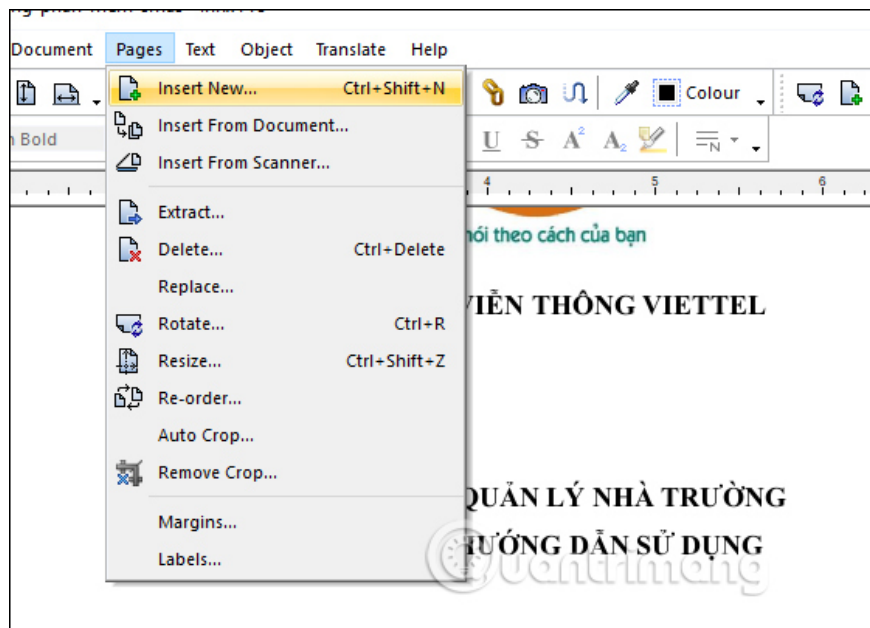
Show Results to review the replacement history has been made, if it is wrong, it can be edited again.



Step 9:

In case you want to add new pages on PDF, users will have 2 Insert New options (add a completely blank page) and Insert From Document (insert new pages from the contents of an existing file) in Pages section .

With **Insert From Document** , you can add PDF files on your computer to the next page.



With **Insert New** , enter Create the number of new pages to add from the current page, with the position ahead or behind the current page.

Insert New Page

Create: page(s) ▾

First page

Last page

Page: of 75

Page Size

Use current size

Standard size: ▾

Portrait

Landscape

Custom size: Width:

Height:

Units: ▾

With Infix PDF Editor, users have more software to edit PDF files with a very simple way. The tools on Infix PDF Editor are similar to the Word interface so we can easily choose to edit.

See more:

1. How to set PDF file password using Adobe Acrobat
2. Remove PDF file password in 3 steps
3. How to stamp copyright PDF files

I wish you all success!

You finished reading the article "**How to edit PDF files with Infix PDF Editor**" edited by the [TipsMake](#) team. We hope this article has provided you with many useful tech tips and tricks. You can search for similar articles on tips and guides. Thank you for reading and for following us regularly.
