

How to edit chart notes in Google Sheets

Notes in the chart are like street signs. It is basically labels that describe part of a chart that contains at least two elements.

Express data by chart types such as pie charts, column charts, line charts, etc., making it easier for readers to read and understand when looking at dry numbers.

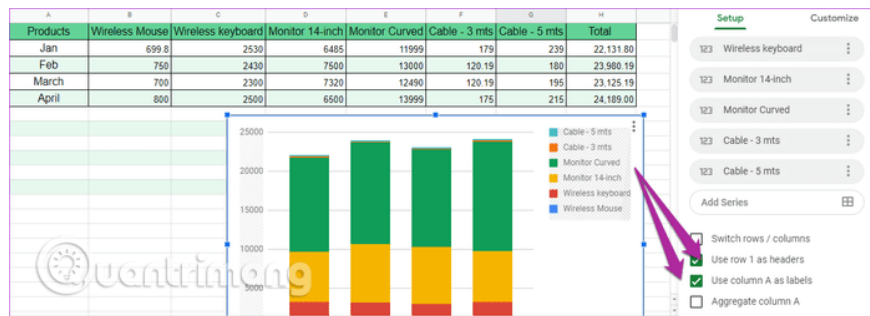
A chart has a clearer note than a spreadsheet with complex numbers and percentages. If a chart doesn't have a caption, that chart is completely useless because no one can understand what it wants to show. Therefore note in the chart is extremely important, is an indispensable part in the data set. Here are some customizations that make your notes more neat and understandable in Google Sheets.

1. How to create graphs, charts in Google Sheets
2. How to insert Google Sheets charts into Google Docs
3. How to format conditional cells in Google Sheets

How to add and format notes in Google Sheets on a computer

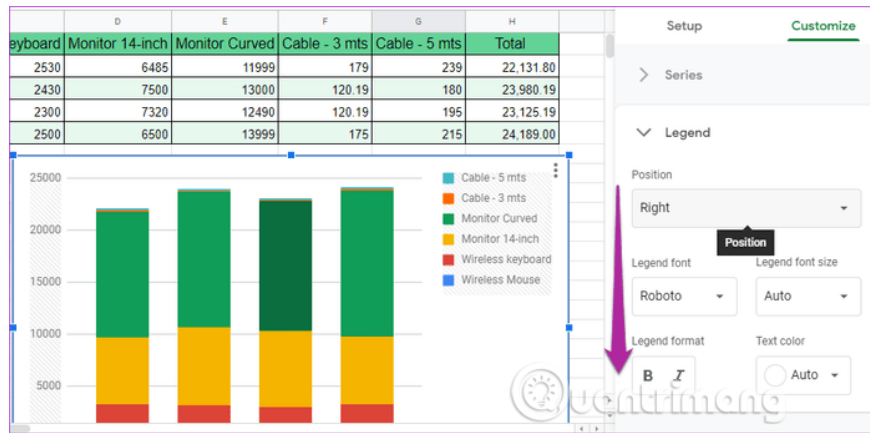
Notes in the chart are like street signs. It is basically labels that describe part of a chart that contains at least two elements. To display and edit chart notes follow the steps below.

Step 1 . Be sure to select the first and the first row of data while creating the chart. If the default note does not appear, click on the chart to activate the Chart Editor. Next select the **Setup** tab and scroll down until you see the checkbox.



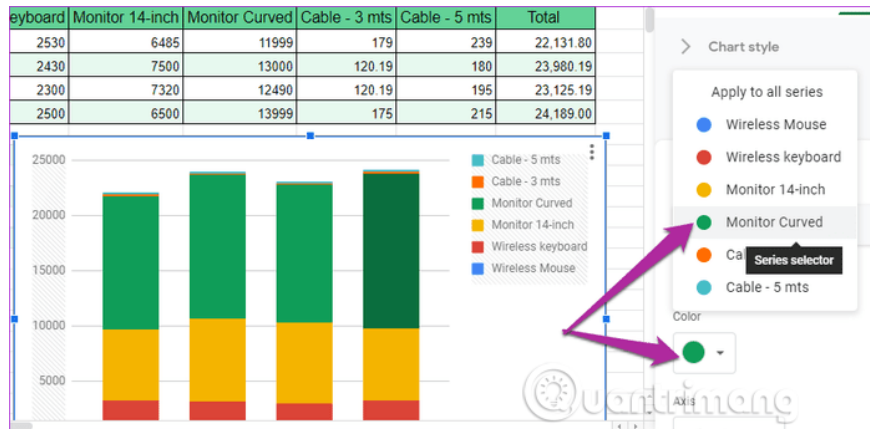
Select the second and third boxes to display chart notes.

Step 2. Next, select **Customize > Legend** and click **Position** to change the note location.



You can also change the font, format or text color to highlight them. Note, however, that the note must be the same color as the column it explains in the chart. When changing the note color, the column color also changes.

To do this, double-click the column (or line in the case of the line chart) to activate the **Series** . Now change color according to your preference.



To change the color of the remaining elements, choose a color from the drop-down menu.

How to add and format notes in Google Sheets on your phone

Adding and formatting notes in Google Sheets on the phone is simple. Access to **Edit** mode, select notes and location.

10:57

24%



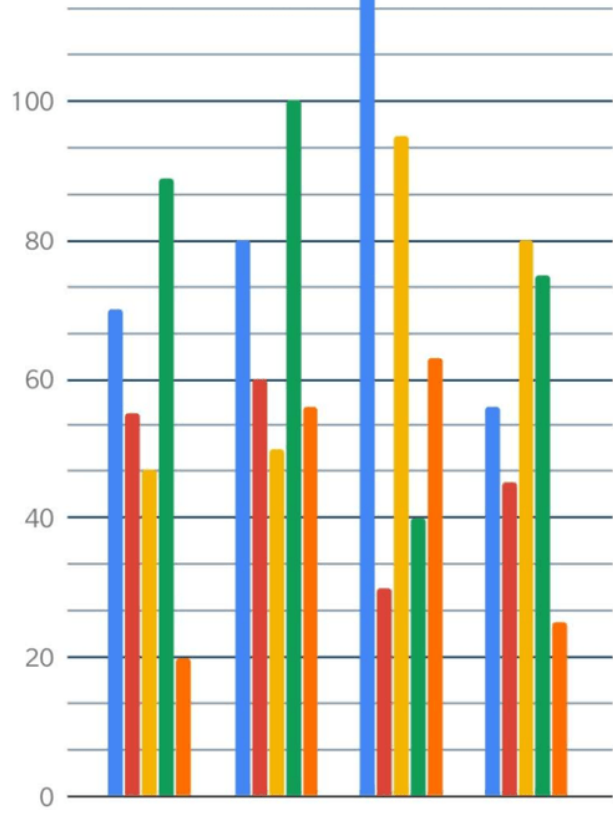
| Products | January | February | March | April | May | June | Total |
|------------|---------|----------|-------|-------|-----|------|-------|
| Jan 2019 | | | | | | | |
| Feb 2019 | | | | | | | |
| March 2019 | | | | | | | |
| April 2019 | | | | | | | |

Edit chart **Delete** **Move to own sheet**





- Orange
- Apple
- Peach
- Mango
- Banana



Chart

Type Column chart >

Legend Left >

Titles >

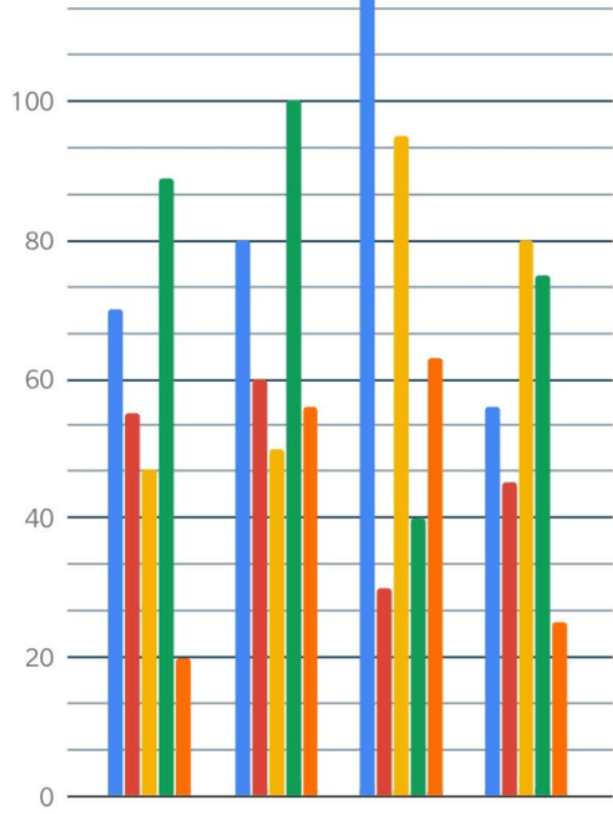
Color >



Adding or changing the color is the same as on the computer, touch the column and the color option will appear.



- Orange
- Apple
- Peach
- Mango
- Banana



Chart

Type Column chart >

Legend Left >

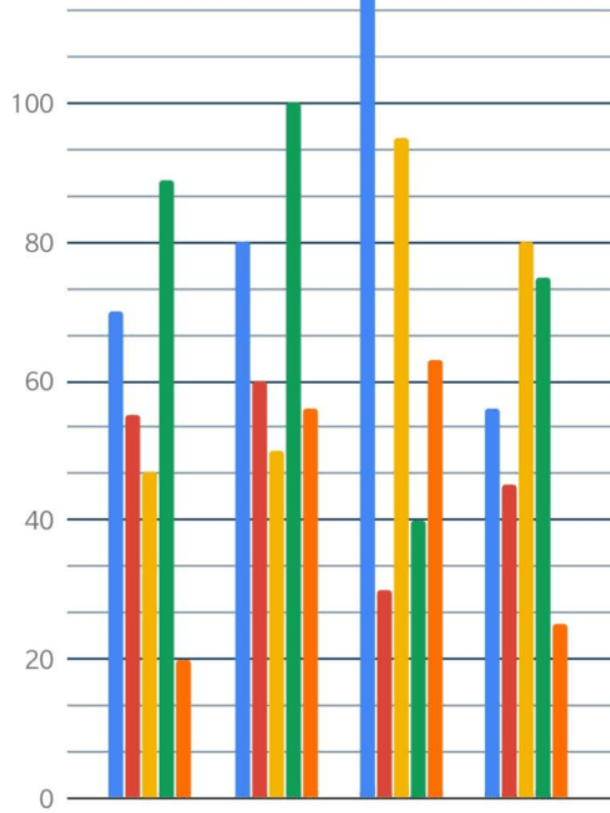
Titles >

Color >






- Orange
- Apple
- Peach
- Mango
- Banana



← Color

- Orange  >
- Apple  >
- Peach  >
- Mango  >
- Banana  >



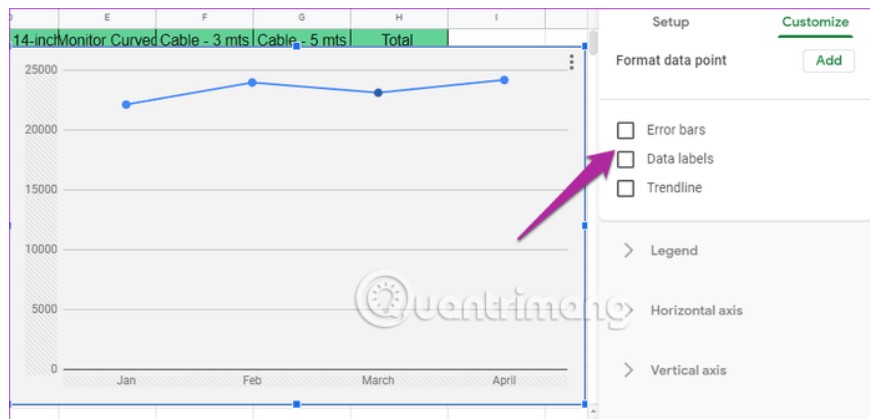
Currently, you cannot change the note text here. To edit a note, you need to edit the text in the data column.

Format each data label in Google Sheets

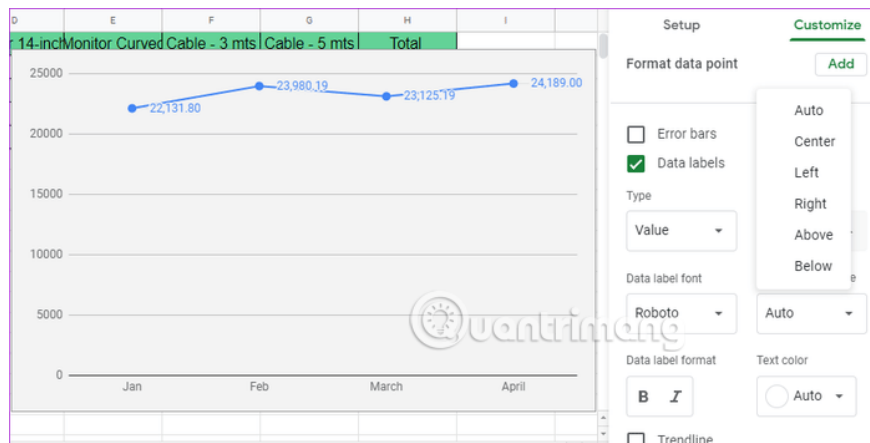
Data labels are just as important as notes. However, unlike notes, data labels are not automatically added, so you need to add them manually.

Step 1. Double-click the chart to open the Chart Editor, click the **Customize** tab, and click the **Series** drop-down menu.

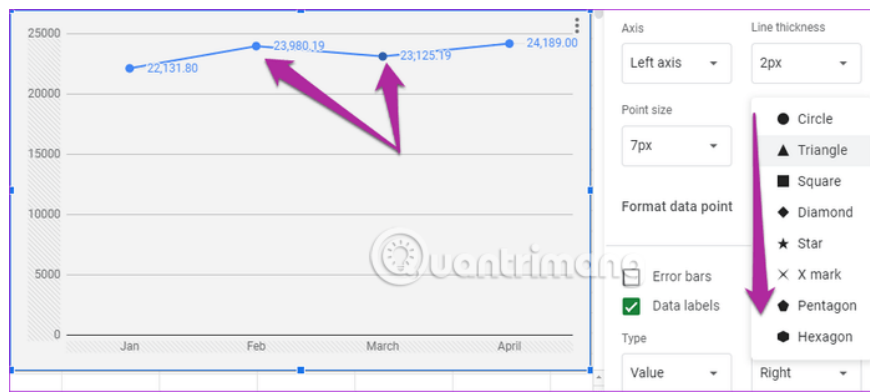
Step 2 . Now, select the **Data labels** checkbox to add to the chart, adjust your desired position.



In addition, you can edit the font, size and font color here.



Step 3 . To add an image to the data label, tap **Point** and select the image you want to display on the chart. Note, these images are for line charts only.



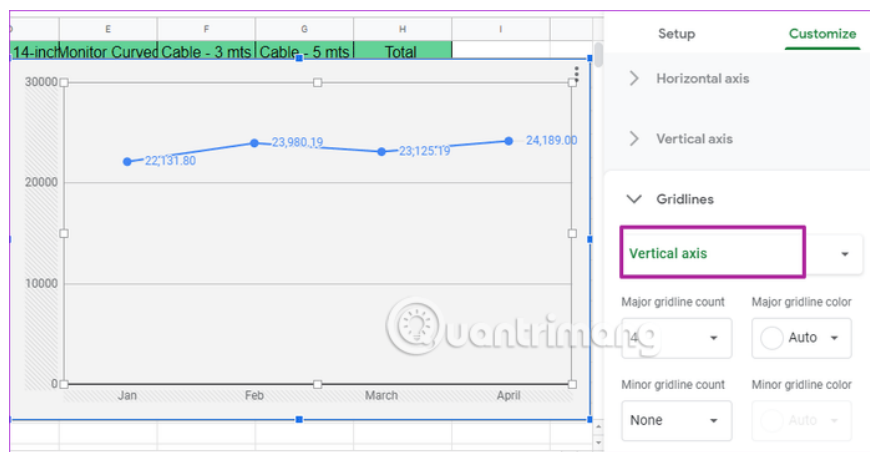
Tip: You can display trend changes via **Trendline** option (**Customize> Series**), similarly if you want to delete other bars, just select the option **Error bars** .

The mobile version of Google Sheets is limited, you cannot add data labels on your phone.

Add or delete grid lines

Google Sheets does a pretty good job of calculating and displaying grid lines. However, sometimes these lines don't appear the way you want. You don't need to worry because you can change or modify it easily.

Go to **Customize> Gridlines** and select **Major gridline count** .



If you don't need this grid line, just select a number from the **Minor gridline count** drop-down menu. You also cannot make this change from the mobile version.

I wish you all success!

You finished reading the article "**How to edit chart notes in Google Sheets**" edited by the [TipsMake](#) team. We hope this article has provided you with many useful tech tips and tricks. You can search for similar articles on tips and guides. Thank you for reading and for following us regularly.