

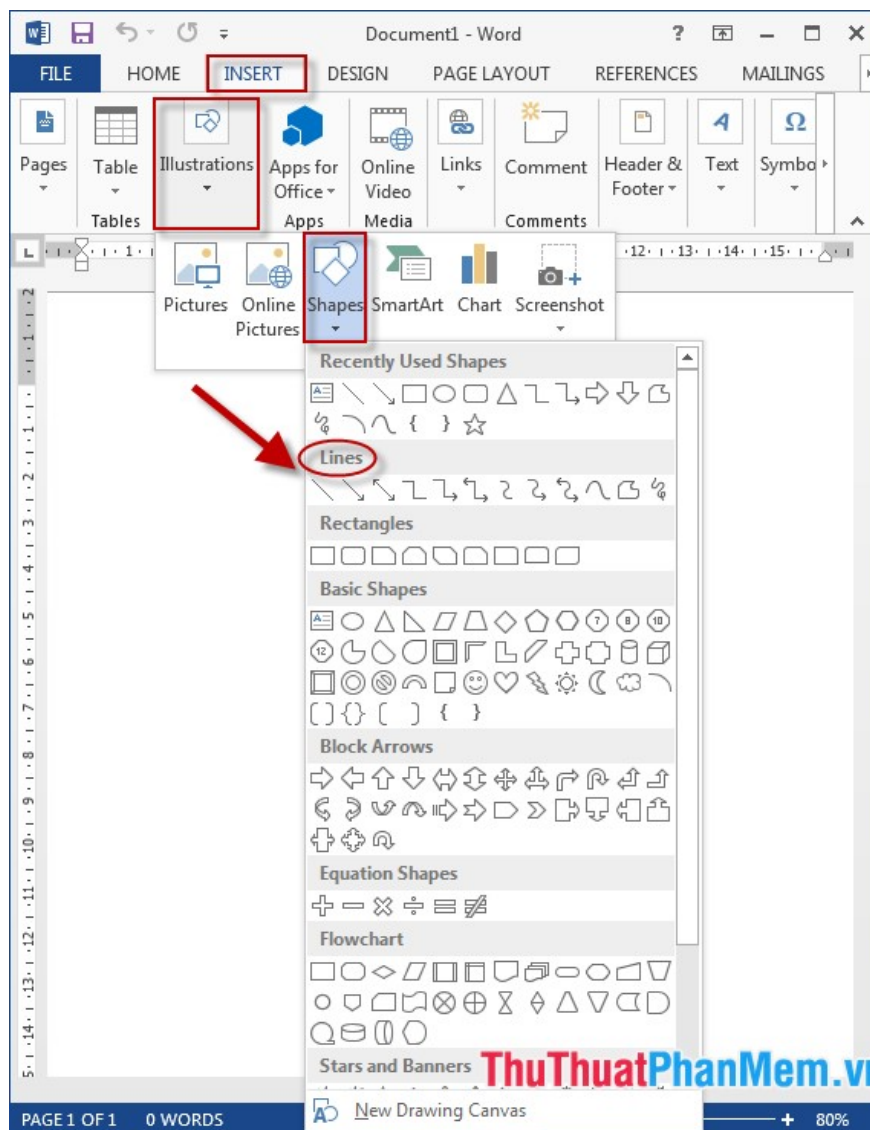
How to draw arrows in Word

The following article shows how to draw arrows in Word to help you create diagrams quickly. How to draw diagrams and simple cubes in Word.

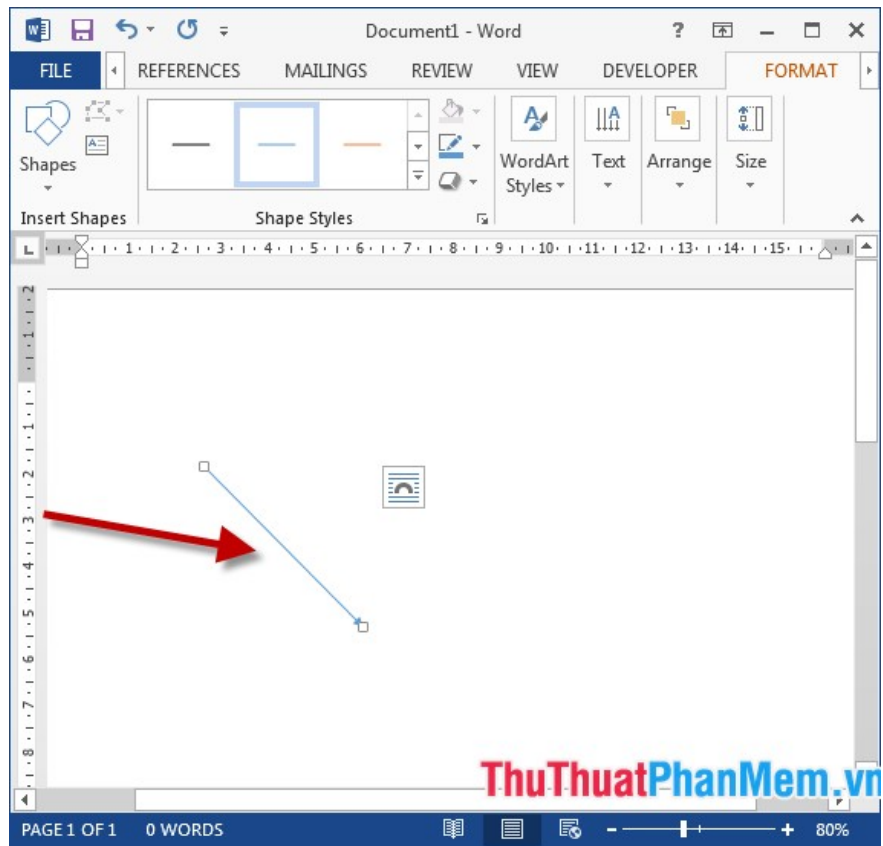
The following article details instructions on **how to draw arrows in Word to help** you create diagrams quickly.

In this article, instructions on the version of **Office 2013**, with other versions perform the same operation:

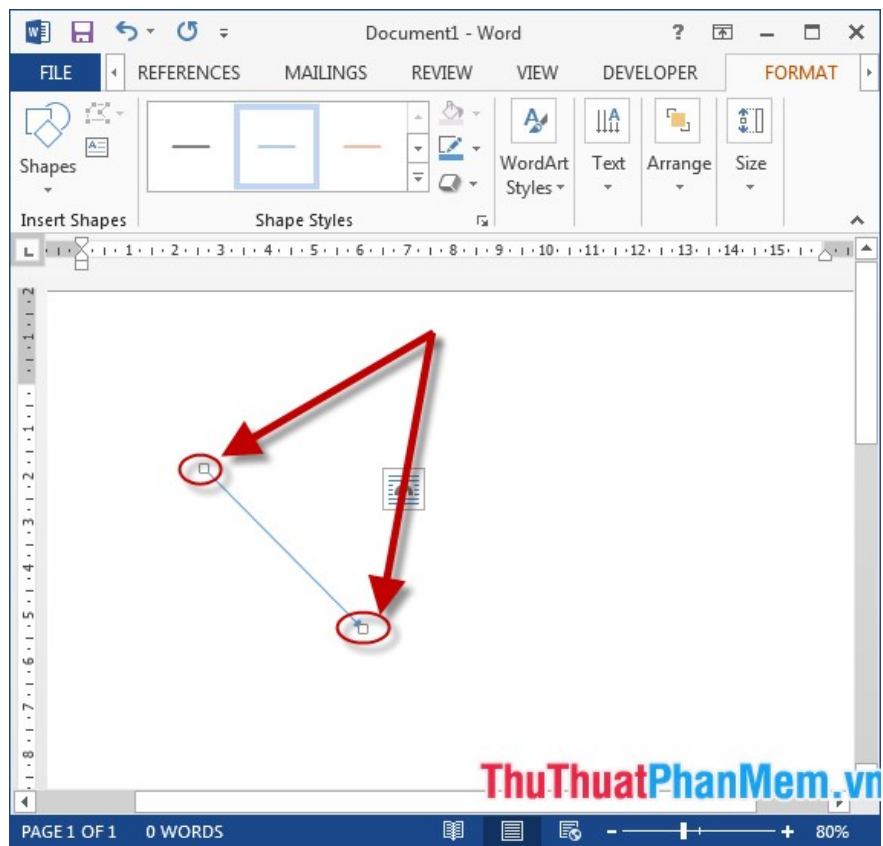
Step 1: On the card **Insert -> Illustrations -> Shapes -> Lines**, under **lines** selected arrow style to draw:



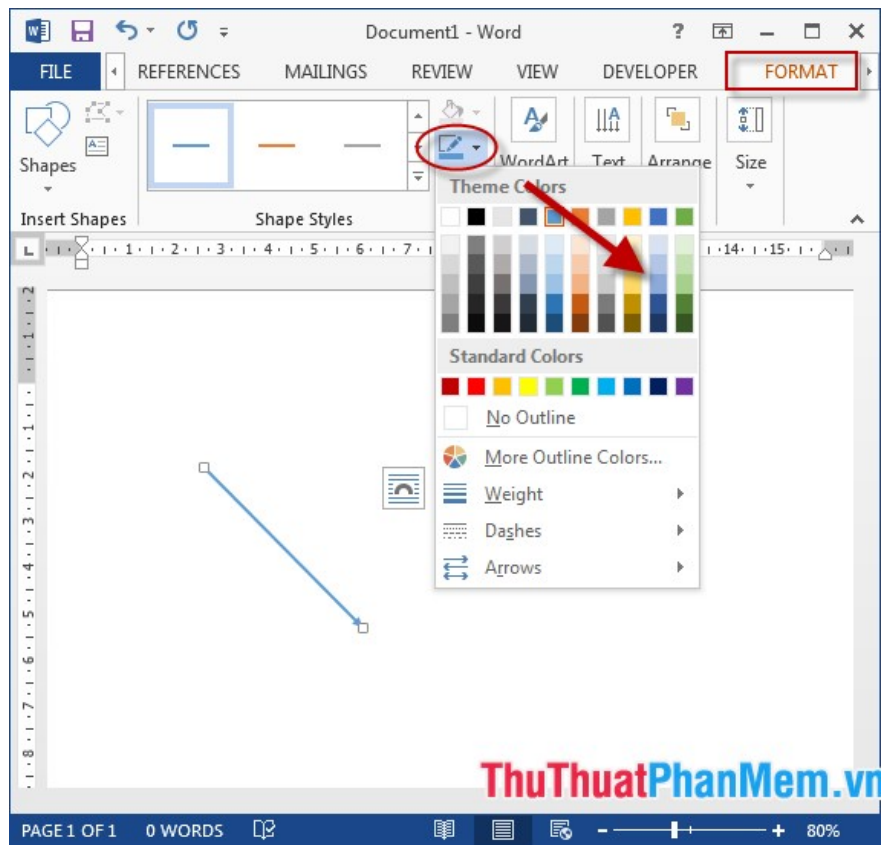
Step 2: Click the mouse to the position to draw, click and drag the mouse in the direction you want to draw the result:

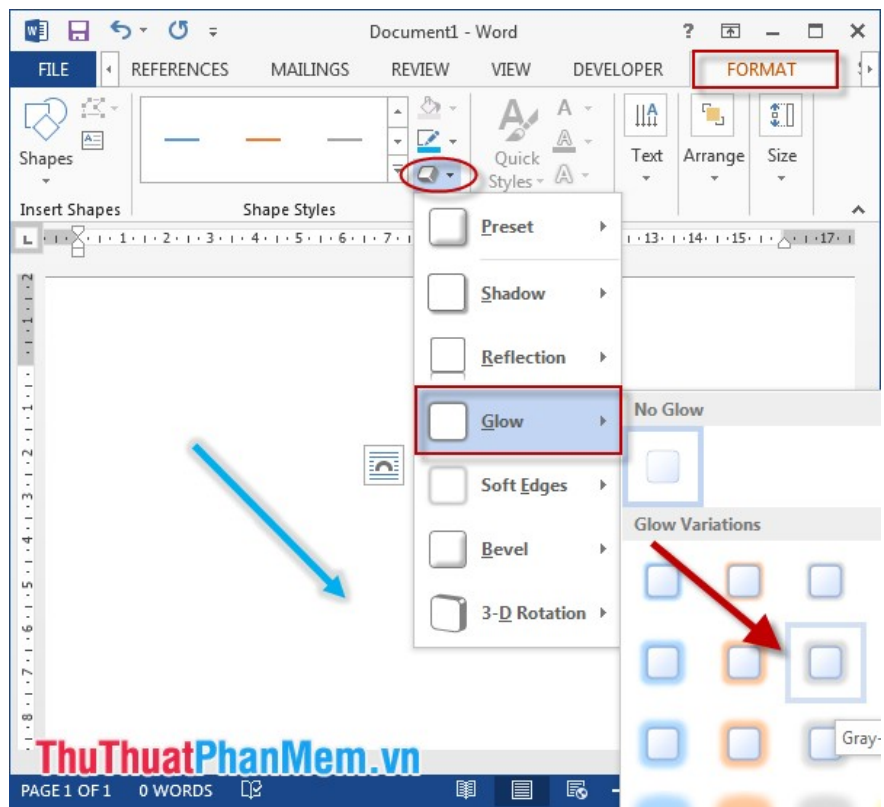


- In case you want to change the length of the arrow -> click the arrow appears 2 images according to the two arrowheads -> click and drag the mouse to change the length:

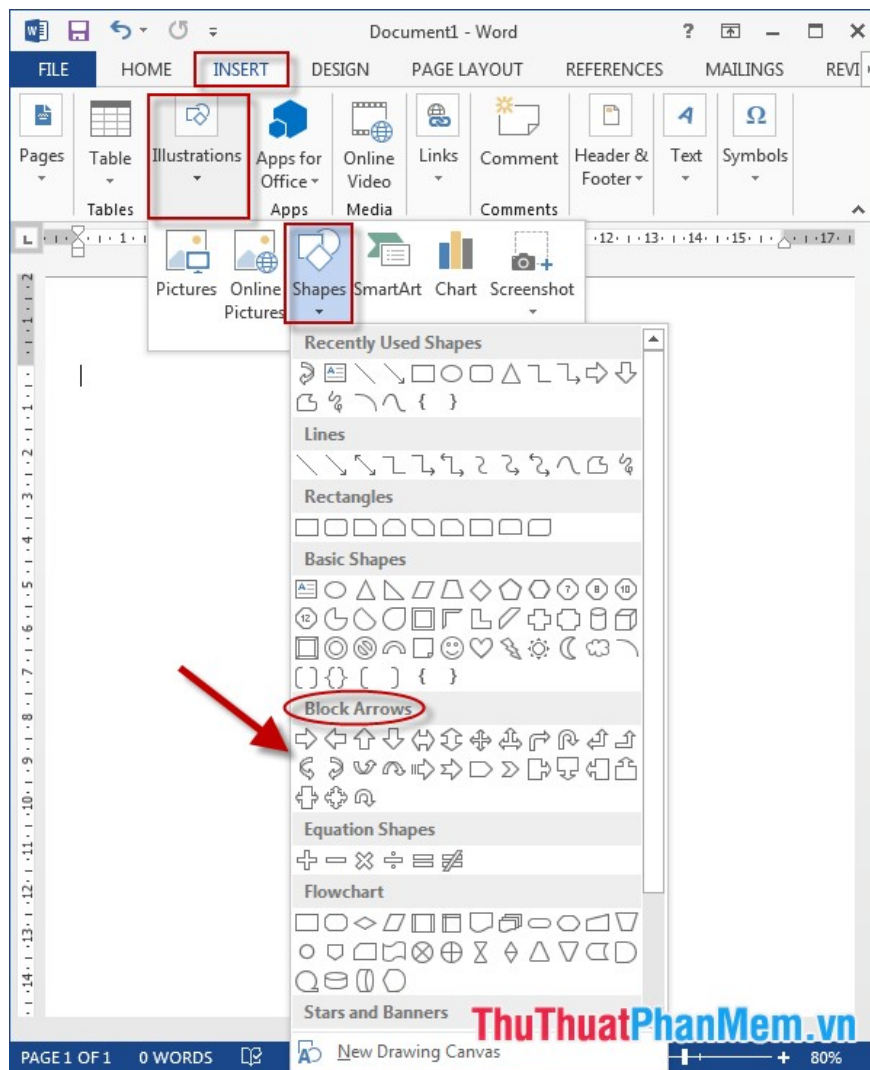


- To change the color of the arrow, click the arrow -> **Format** -> **Shapes Outline** -> select the color to change:

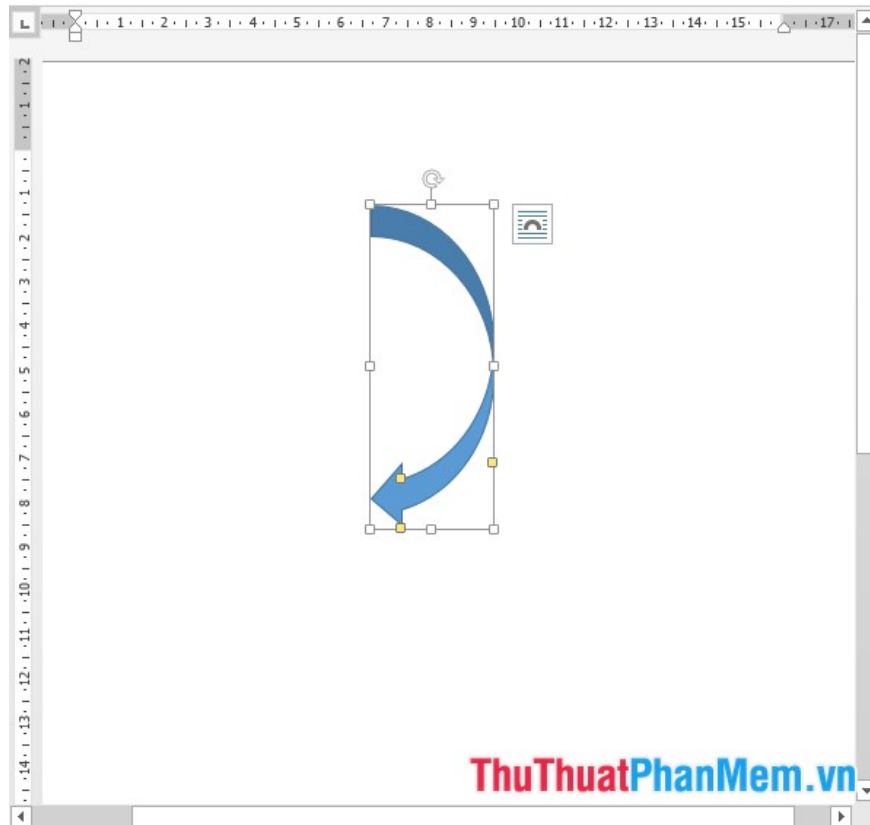




- Alternatively you can choose to draw curved arrows in the **Block Arrows** section:



- Results after drawing curved arrows:



Above is a detailed guide on how to draw curved arrows in Word, hoping to help you in the process of working. Good luck!

You finished reading the article "**How to draw arrows in Word**" edited by the [TipsMake](#) team. We hope this article has provided you with many useful tech tips and tricks. You can search for similar articles on tips and guides. Thank you for reading and for following us regularly.