

How to draw a mysterious, attractive mask for Halloween night

Just follow the 8 simple steps below you can draw scary Halloween masks, mystery for yourself with paint and cosmetics to attend a memorable Halloween holiday season.

Just follow the 8 simple steps below you can draw scary Halloween masks, mystery for yourself with paint and cosmetics to attend a memorable Halloween holiday season.

Prepare tools and work together!

To draw a mask on the face you need:

1. Makeup brushes.
2. White chalk.
3. Blusher.
4. Multi-colored eyeshadow set.

8 steps of implementation:



1. Draw eyes: use a pencil to circle a wide circle around the eyes.



2. **Eye paint:** Use the brush to paint over the eyes (inside the newly drawn circle). Painting colors depend on your preferences, be it black, charcoal blue, black blue .



3. **Fill the surface** (using white).



4. **Lip makeup, cheeks** : Use cheeks to hit the cheekbones and lips.



5. **Drawing the nose**: Use black to close the nose.



6. Select orange to draw small, contiguous circles outside the black circle around the eye. You can also draw seamless circles into other shapes to highlight the forehead. In addition to orange, you can choose other colorful, striking colors to paint like red, dark pink .





7. Create "**mouth stitches**": Use a black acrylic brush to score 3 points evenly in the cheek area to orient and then connect the dots. Draw long, short, vertical strokes on the lips to create a "stitch" pattern.



8. Draw more patterns according to your preferences in the lower part of the chin to make the face stand out.

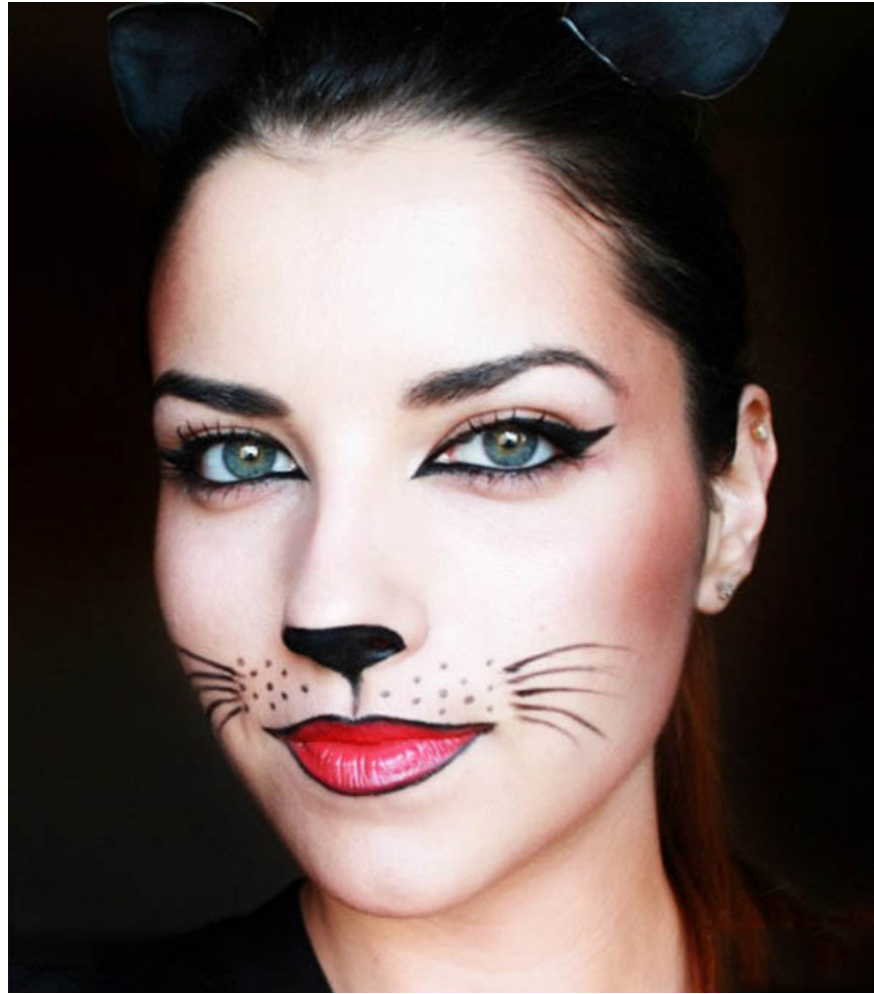


So you have finished making up to turn your face into a mysterious and impressive Halloween mask. Not too complicated!



You can unleash more creativity with colors, other motifs to have an impressive mask at will.

Some mask samples you can refer to makeup for Halloween night.



Cat face .This is a simple, easy-to-implement mask that is equally cute.You just need to draw slanted eyes with dark colors, draw cat whiskers and don't forget the dark spots around.You draw the black lip border and paint with dark pink or red lipstick.With the nose part you can choose black or red as you like.



Spider. You use a black eyeliner to draw the lower eyelid and a dark blue border on the upper eyelid. To increase the macabre effect for Halloween night, you draw spider webs in the upper part of the eye with a water pen.



God died .This face is chosen by many young people because it causes strong fear effects for those around them.You need to apply a layer of white powder to make the face for the face.Then you create blocks and color.



This half-face makeup style is quite simple but also very unique.



Dress up as a horror skull.



Live corpse mask.



Scary devil mask.

Video tutorial drawing horror skull mask.

Video tutorial of drawing devil masks.

Video tutorial drawing mask for Halloween night.

Wish you success and have a memorable Halloween season!

You finished reading the article "**How to draw a mysterious, attractive mask for Halloween night**" edited by the [TipsMake](#) team. We hope this article has provided you with many useful tech tips and tricks. You can search for similar articles on tips and guides. Thank you for reading and for following us regularly.