

How to download and add new Minecraft maps

Thanks to a community eager to share their worlds, you can download a high level Minecraft map and start playing right away.

"Minecraft" - and especially the original "Java" version, is a game that offers players almost limitless creativity. No two worlds are exactly alike in Minecraft, and starting a new one can sometimes be a daunting task.

Fortunately, you don't have to start over. Thanks to a community eager to share their worlds, you can download a high level Minecraft map and start playing right away.

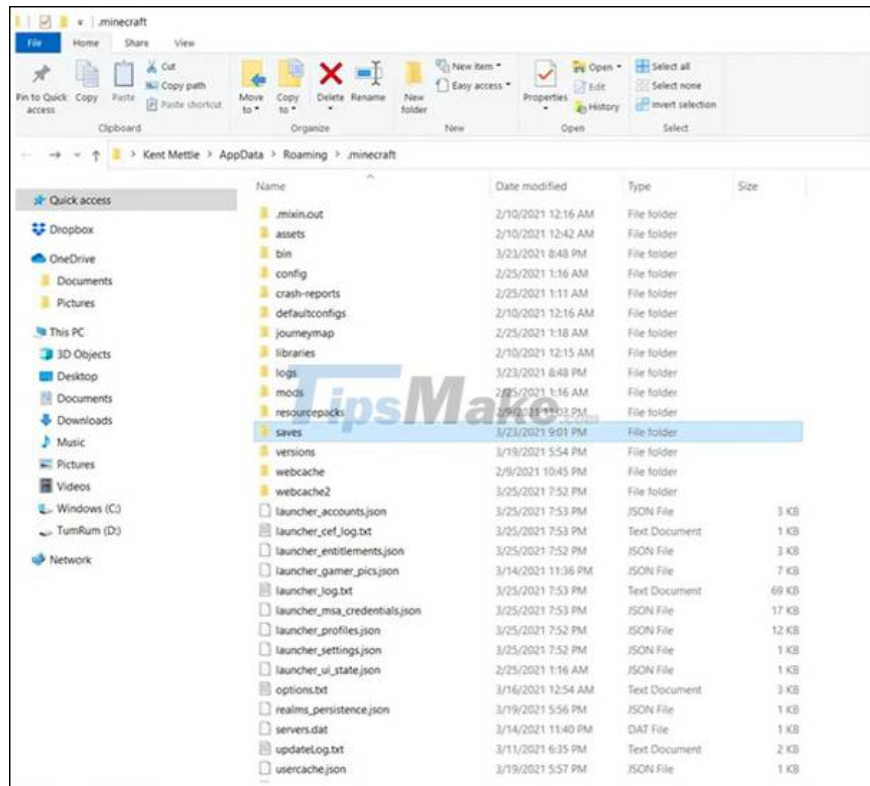
These downloadable maps are often more than mere templates: They can offer risky puzzles, a scare horror experience, scavenger hunts, multiplayer games, etc. The maps you download are compatible with the version of Minecraft you run, every theme and imaginable map type is at your fingertips.

How to download a Minecraft map and add it to the game

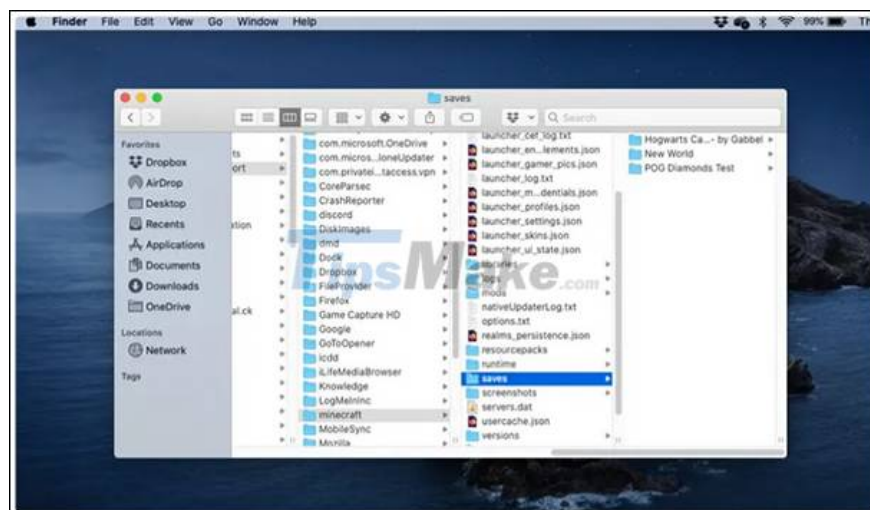
Step 1. When you find a map you want to download that is compatible with the version of Java game running, download, unzip, and drag the file onto your desktop (or any location on your computer where you can find it again quickly).

Step 2. Next, find and open your Minecraft folder. If your Minecraft folder is saved in the default location on your device, search by:

1. Windows: Press the **Windows + R** key combination to open the **Run** menu . In the text input section, type **"% appdata% .minecraft"** and press **Enter** .



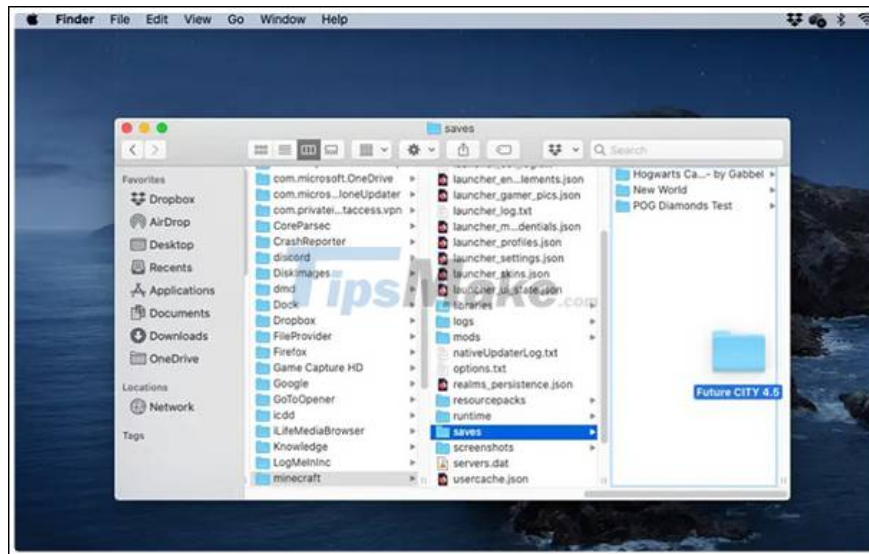
Mac: Open a Finder window and click "Go" at the top of the screen, then "Go to Folder". In the pop-up that appears, type "~/Library/ApplicationSupport/minecraft" and press "Go".



1. Linux: In the **Home** directory , Minecraft can be found under **"/home/YOURNAME/.minecraft/"**.

Step 3. In the **Minecraft** folder, find the folder ' **saves** '. When it opens you will see the names of all the worlds available in your game.

Step 4. Grab the map you downloaded and drag and drop the file to the Minecraft " **saves** " folder . Make sure to drag the entire folder for the map download file, not just the contents in the folder.



Step 5. Start Minecraft.

Step 6. Select **Singleplayer** , find the new map and click on **Play Selected World** .



From here, prepare yourself for the wonderfully cultivated world you are about to enter, just make sure to credit the true creator in the world if more people ask.

You finished reading the article "**How to download and add new Minecraft maps**" edited by the [TipsMake](#) team. We hope this article has provided you with many useful tech tips and tricks. You can search for similar articles on tips and guides. Thank you for reading and for following us regularly.