

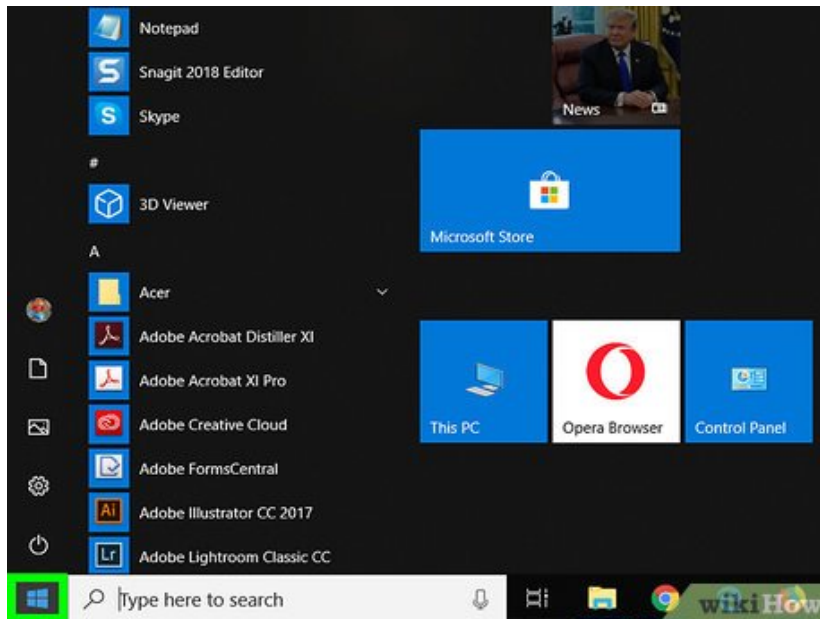
# How to Downgrade from Windows 10

This wikiHow teaches you how to return to an older version of Windows after upgrading to Windows 10. If you upgraded less than 10 days ago, you can easily roll back to Windows 8.1 or 7. If it's been more than 10 days since you upgraded,...

Method 1 of 2:

## Rolling Back an Upgrade

1.



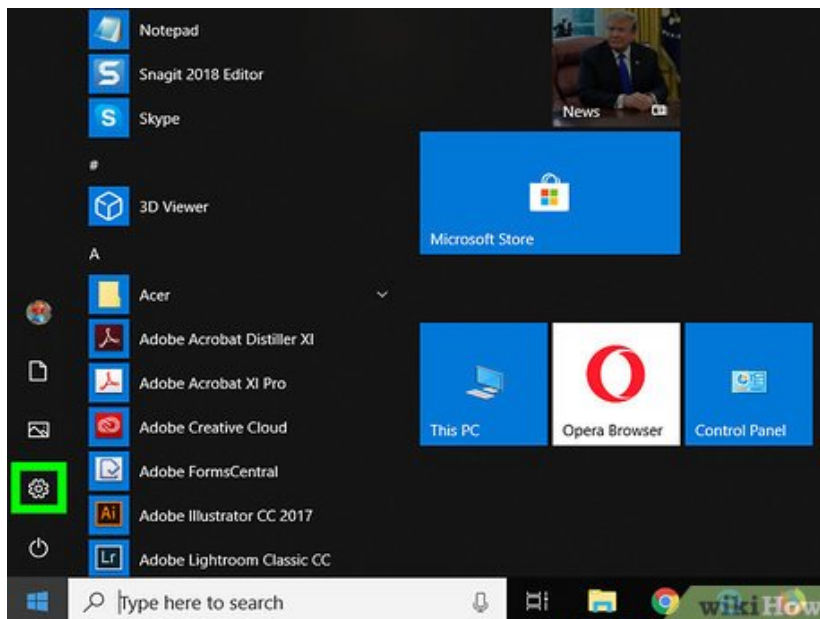
Click the Start



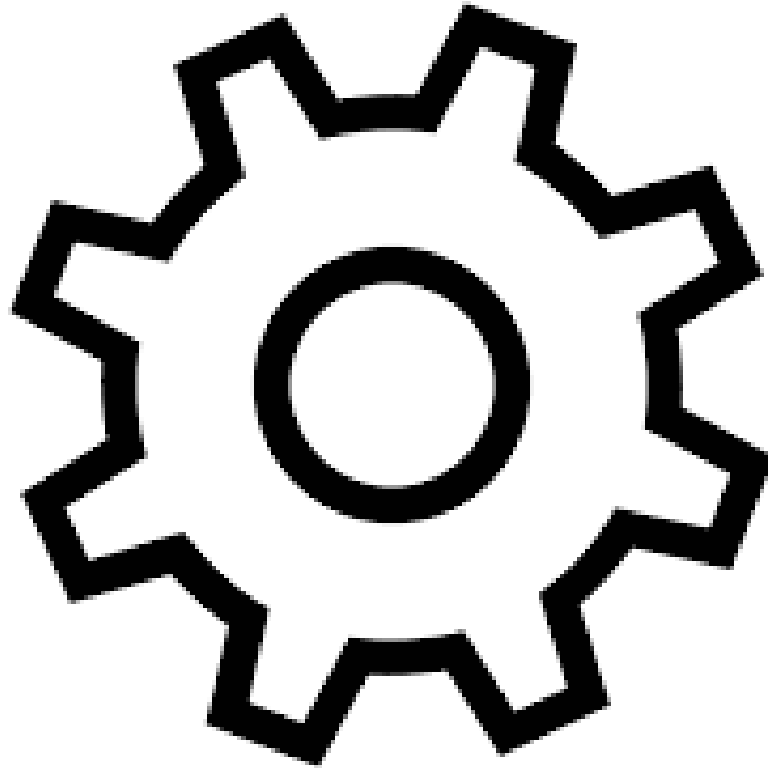
**menu.** It's usually at the bottom-left corner of the screen.<sup>[1]</sup>

1. These steps will only work if you've upgraded your computer to Windows 10 in the past 10 days. If it's been longer than that, the only way to downgrade is to reset your PC to its original factory settings. See this method to learn how.
2. If your computer came with Windows 10 pre-installed, there's no way to downgrade.
3. Any apps you've installed since upgrading will be removed, but your personal files will remain intact.

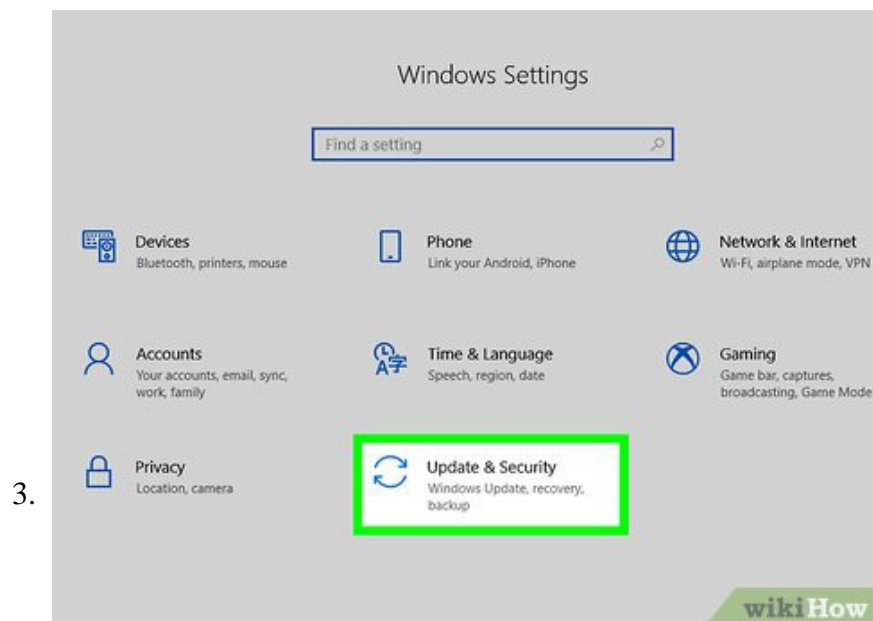
2.



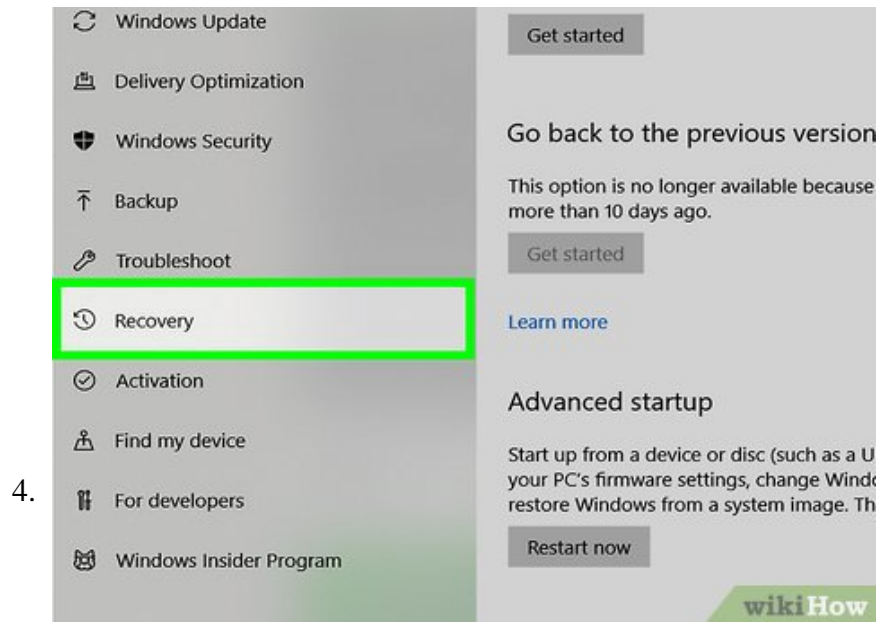
## Click Settings



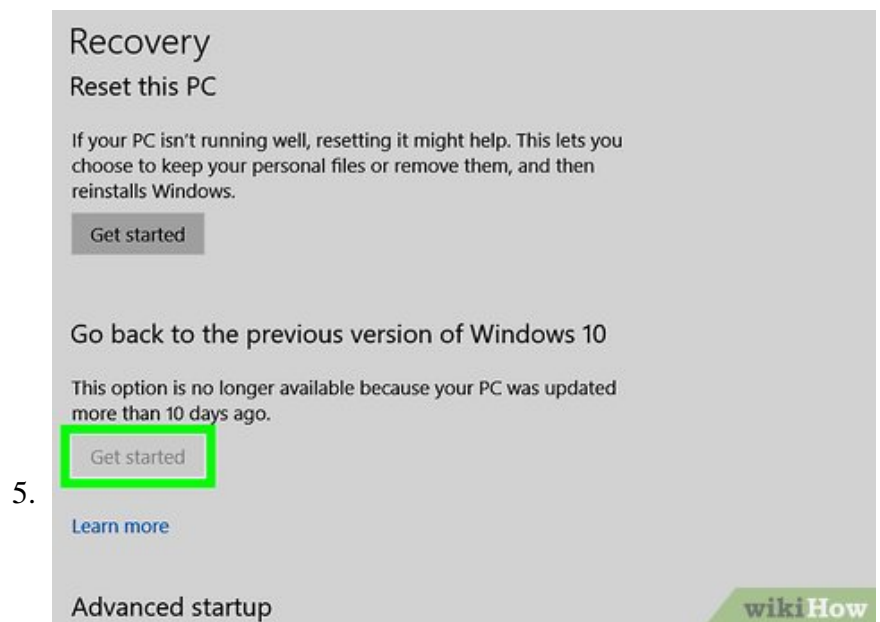
. It should be near the bottom of the menu.



Click **Update & Security**. It's the option with two curved arrows. You may have to scroll down in settings to see this option.

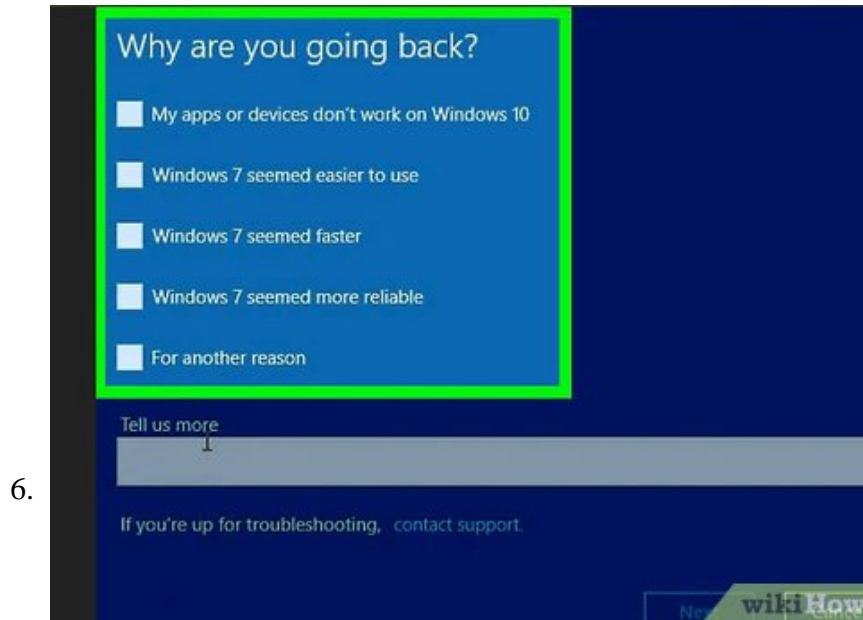


Click **Recovery**. It's in the left panel.

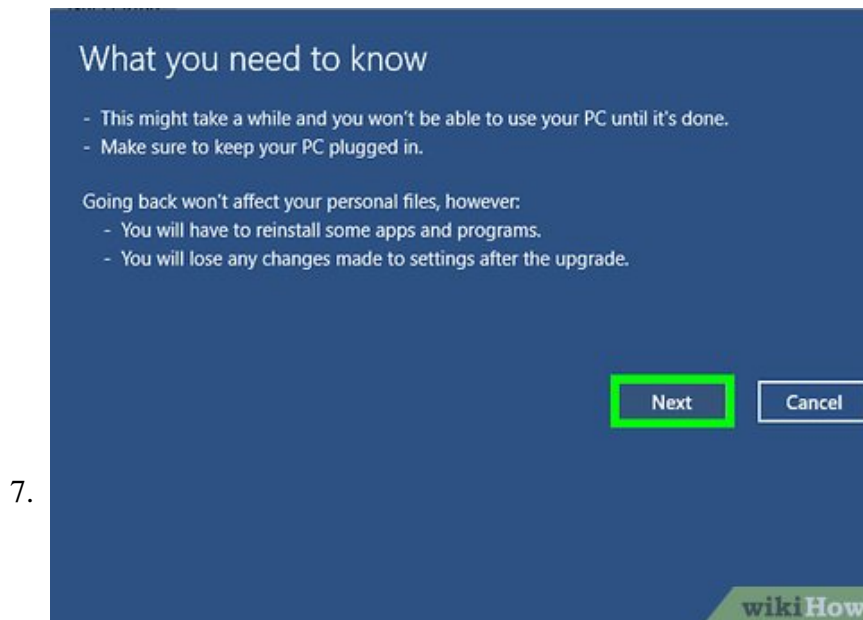


Click **Get started** under "Go back to the previous version of Windows."

1. If it's been more than 10 days since you've upgraded, the button will be grayed out. You'll also see a message that says "This option is no longer available because your PC was upgraded more than 10 days ago."



Select a downgrading reason and click **Next**.



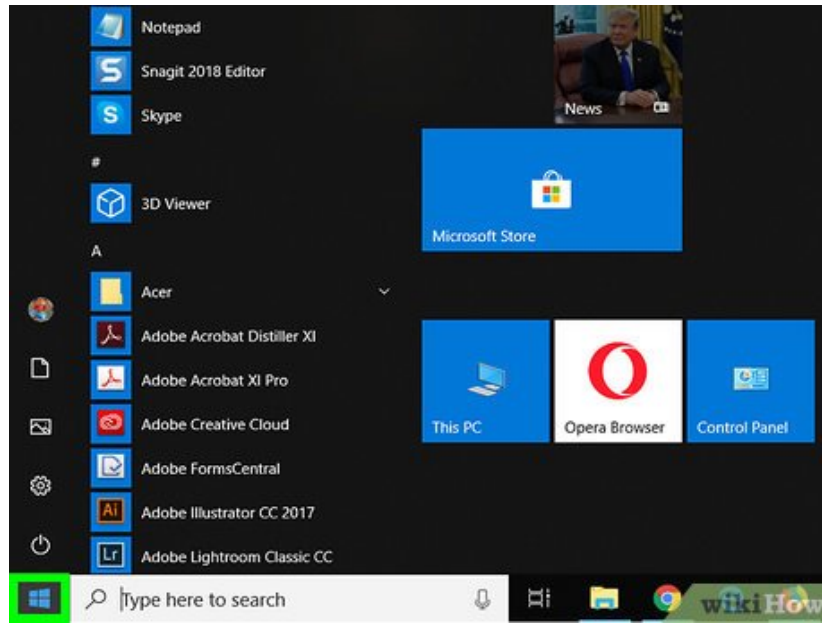
**Follow the on-screen instructions to downgrade Windows.** Once the downgrade is complete, your computer will restart to the login screen of the previous version of Windows.

1. If you were not signed into the previous version of Windows with the same Microsoft account you use to sign into Windows 10, you'll be prompted to log in with your old password after downgrading.

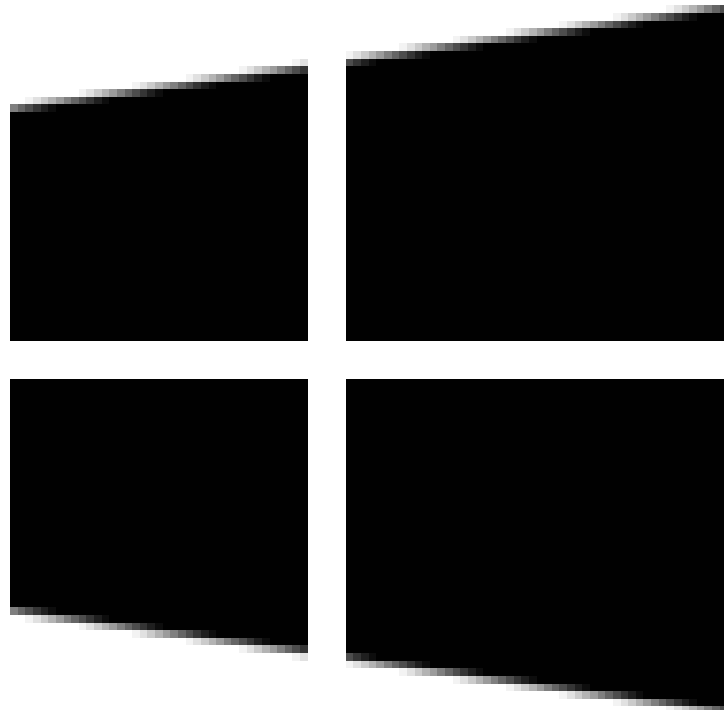
Method 2 of 2:

## Doing a Factory Reset

1.



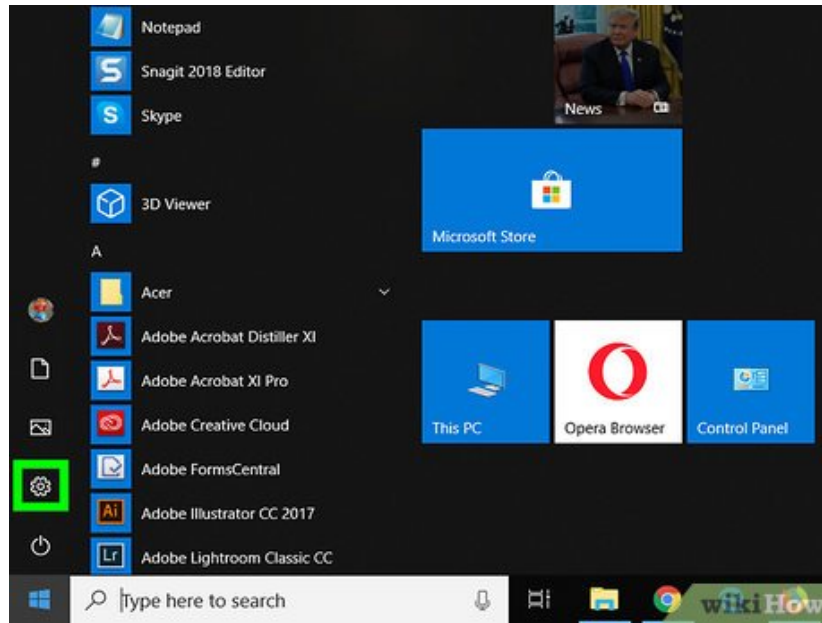
## Open the Start



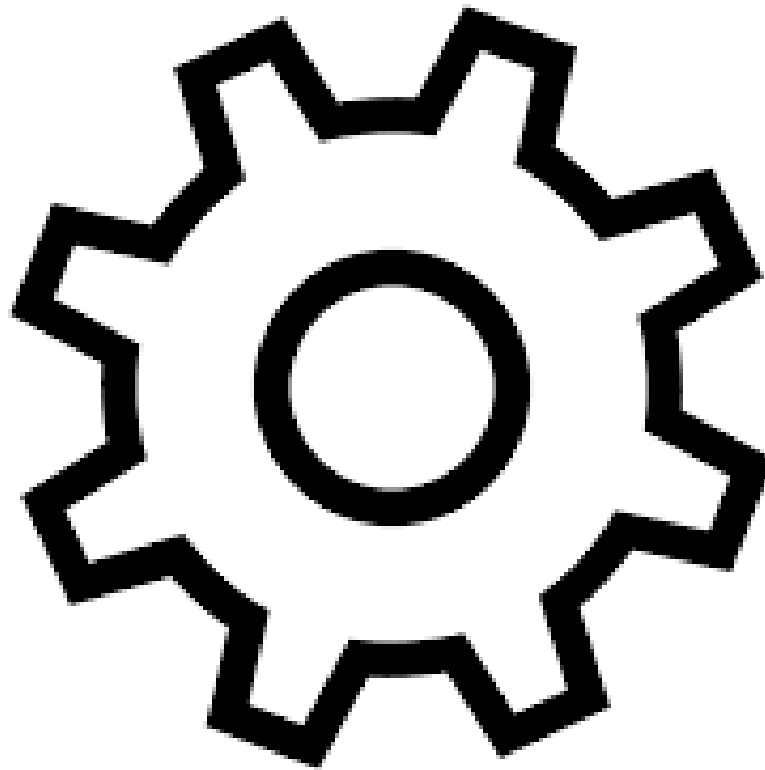
**menu.** You'll usually find it at the bottom-left corner of the screen.

1. If you upgraded to Windows 10 more than 10 days ago, the only way to return to the original operating system (Windows 8, 8.1, or 7) is to reset your PC to its original factory settings.

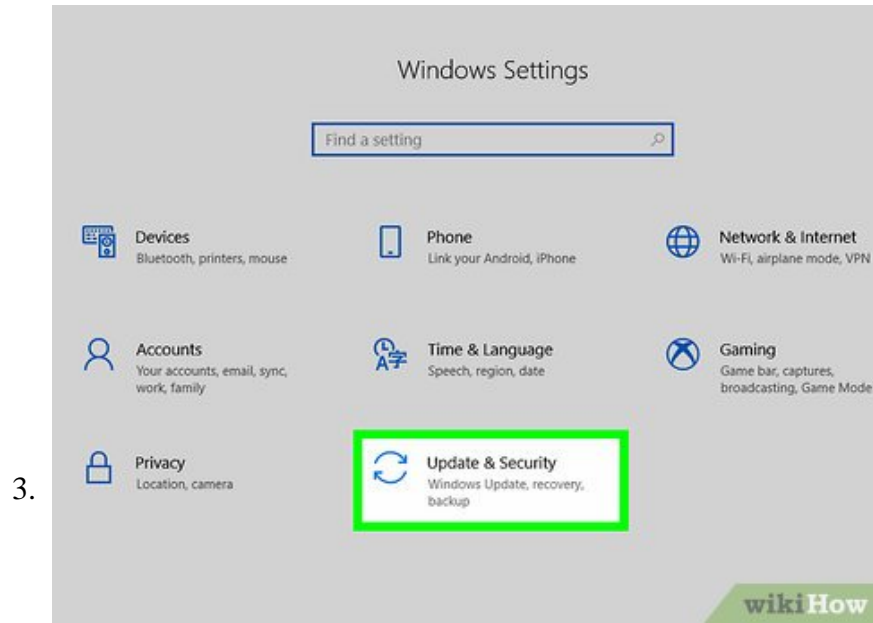
2.



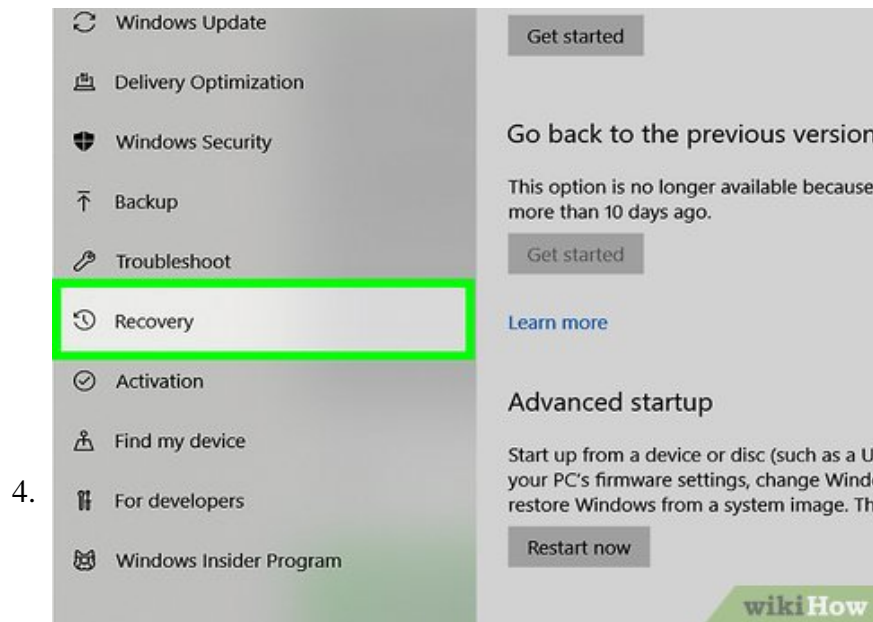
**Click Settings**



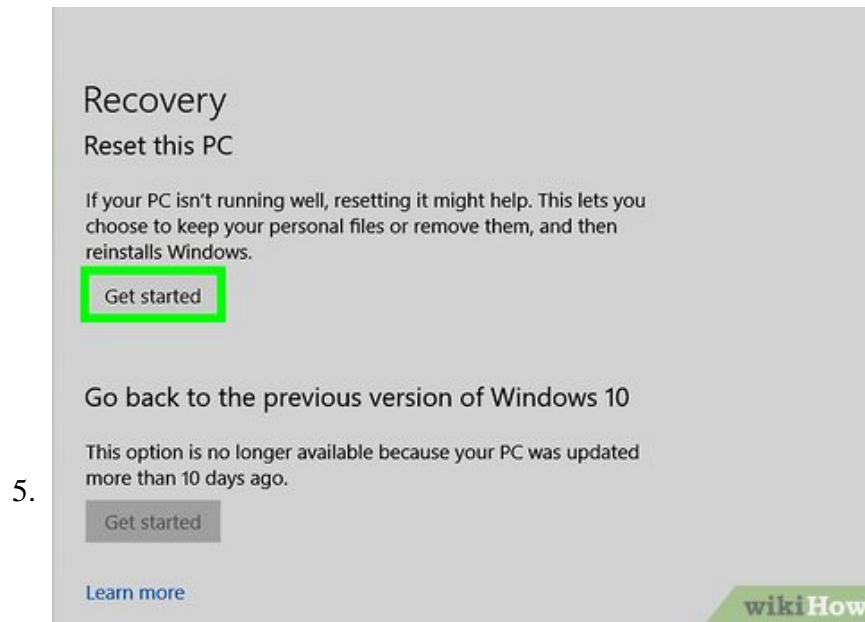
. It's near the bottom of the menu.



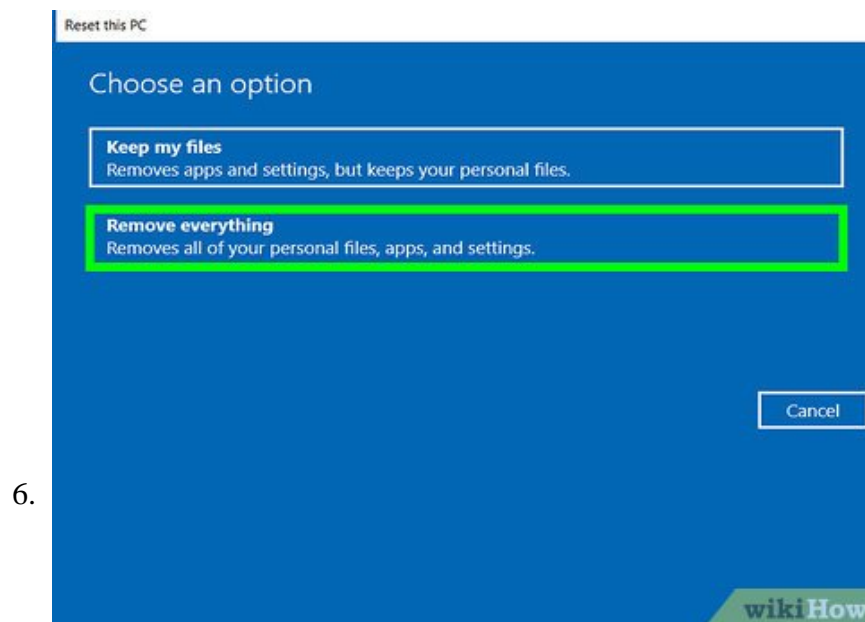
Click **Update and Security**. It's the curved arrow icon. You may have to scroll down in settings to see this option.



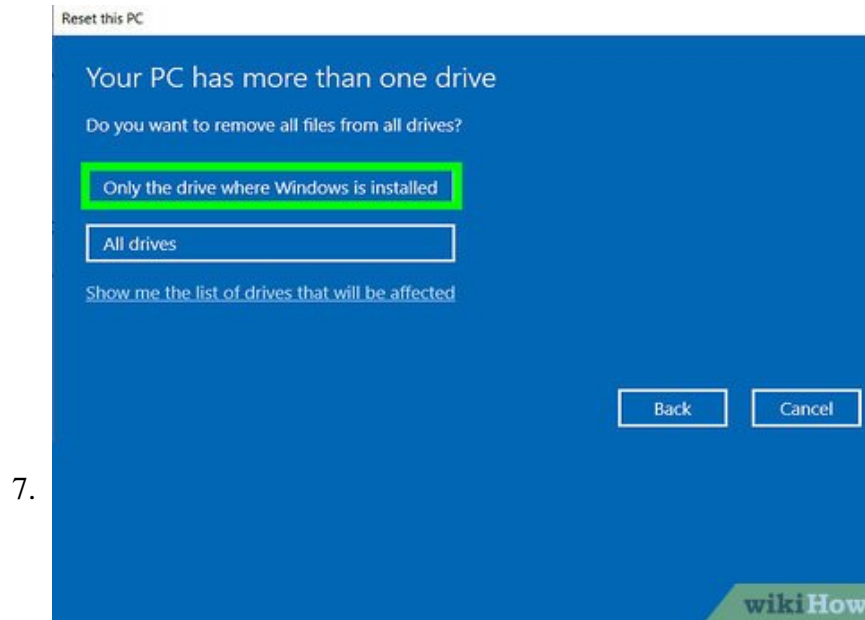
Click **Recovery**. It's in the left panel.



Click **Get Started** under "Reset this PC." It's the first button on the right panel.



Click **Restore Factory Settings**. It's the third option, which only appears after you've done an upgrade.<sup>[2]</sup>



**Follow the on-screen instructions to reset your PC.** Once your PC is restored, you'll be prompted to set up the original version of Windows that came with your PC.

You finished reading the article "**How to Downgrade from Windows 10**" edited by the [TipsMake](#) team. We hope this article has provided you with many useful tech tips and tricks. You can search for similar articles on tips and guides. Thank you for reading and for following us regularly.