

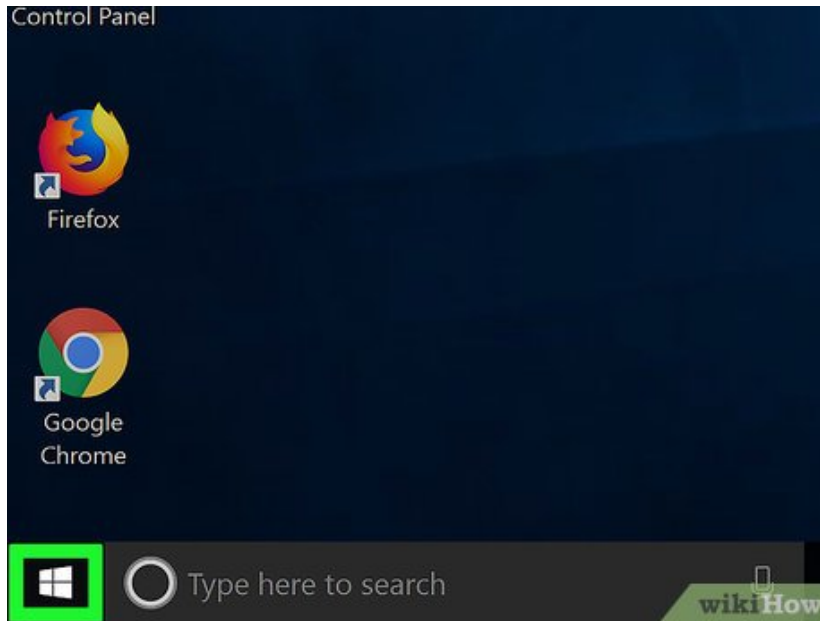
How to Do a System Restore

This wikiHow teaches you how to restore a previous version of your Windows computer's operation. Keep in mind that you will need to have a restore point on your computer in order to use System Restore. If you want to restore a Mac, you'll...

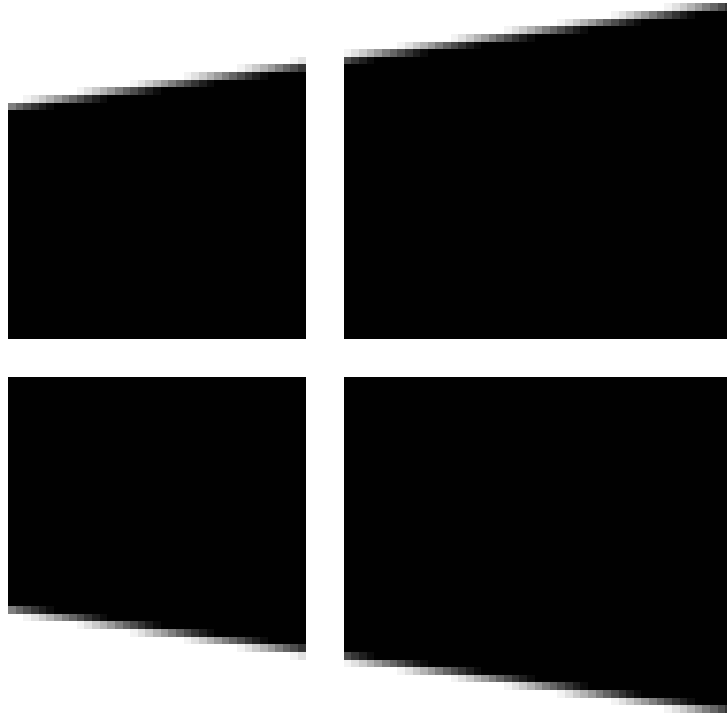
Part 1 of 3:

Creating a Restore Point

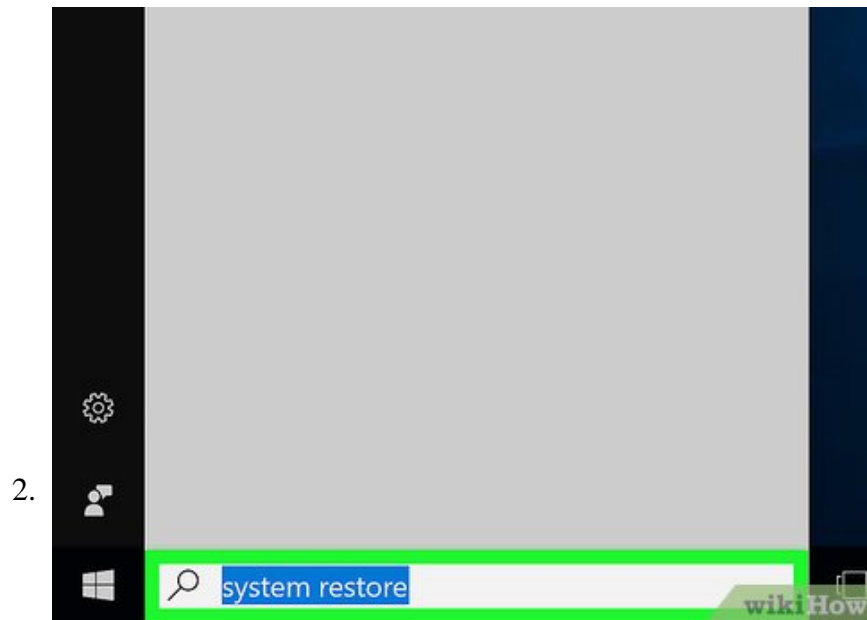
1.



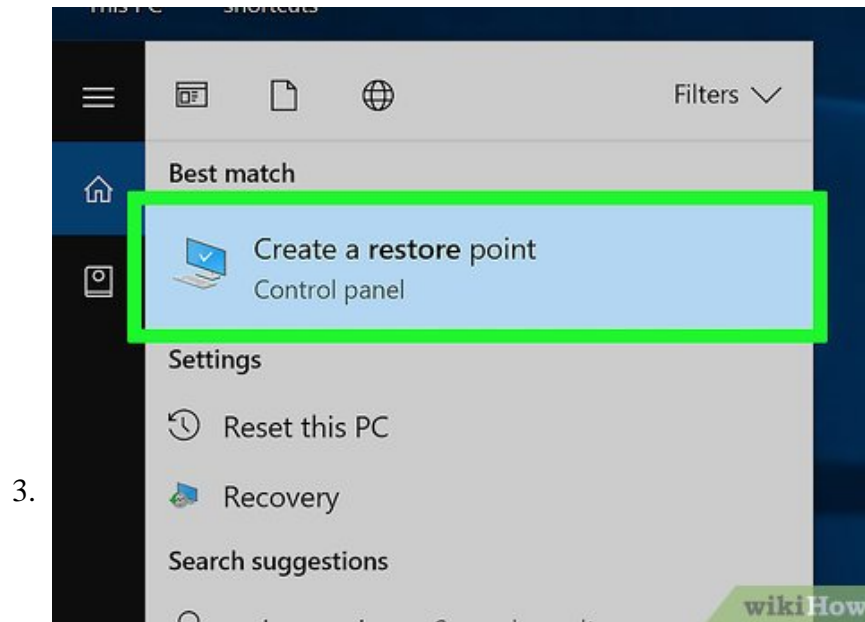
Open Start



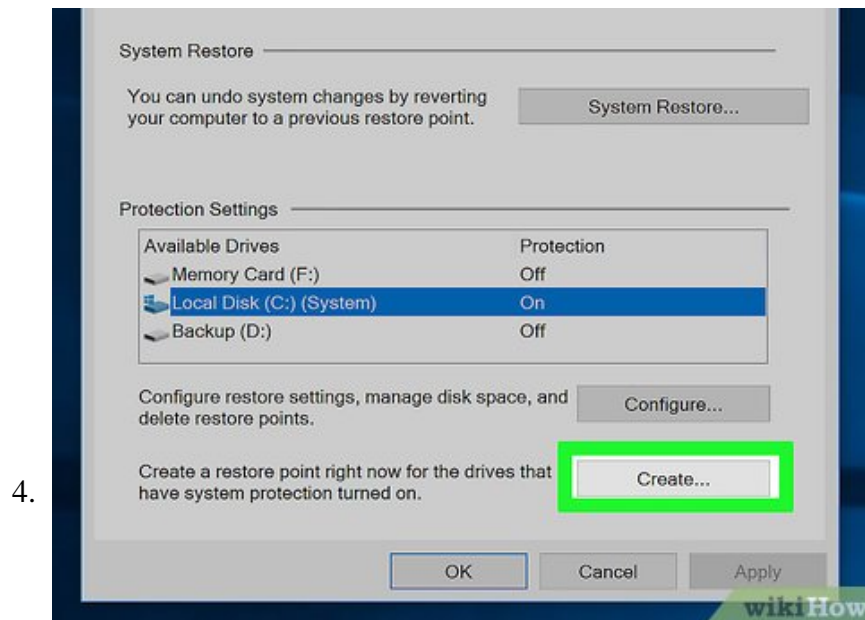
. Click the Windows logo in the bottom-left corner of the screen.



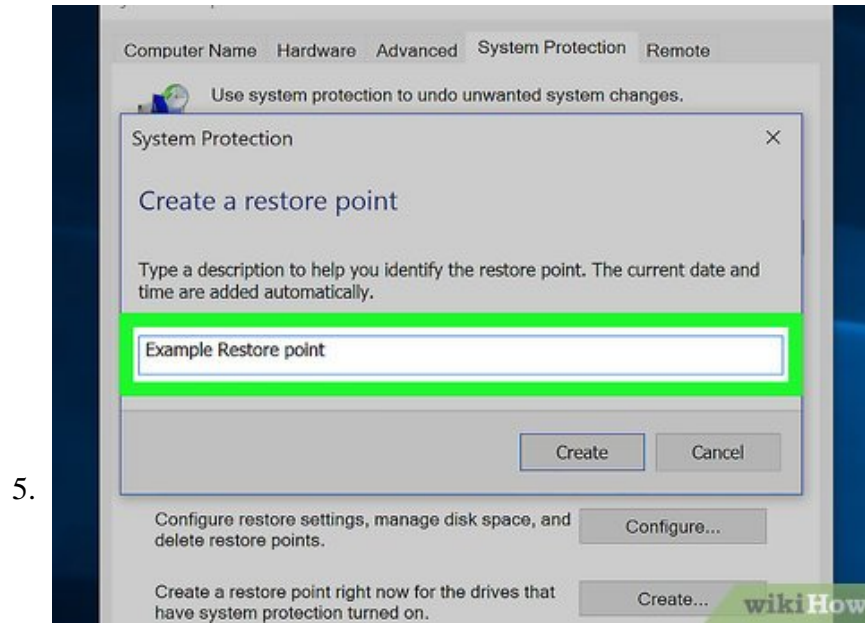
Type **system restore** into Start. Doing so searches your computer for the restore point menu.



Click **Create a restore point**. It's the monitor-shaped icon at the top of the window.

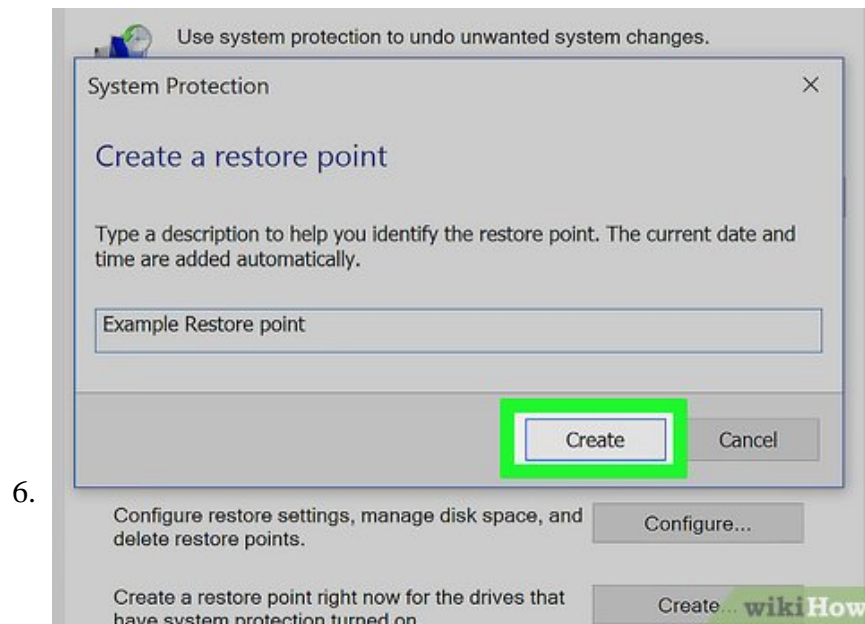


Click **Create...**. This option is in the lower-right side of the System Restore window. A new window will open.

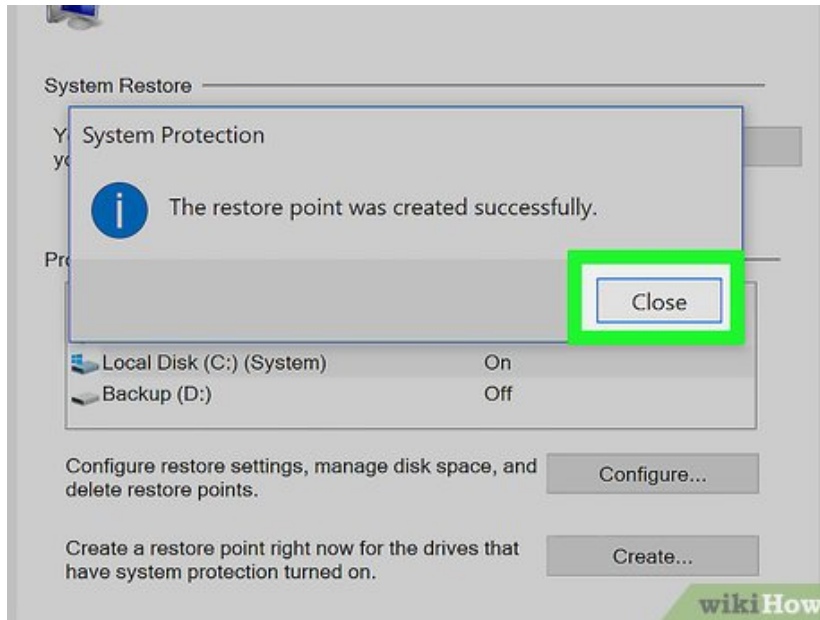


Enter a restore point name. Click the text box in the middle of the window, then type in your restore point's name.

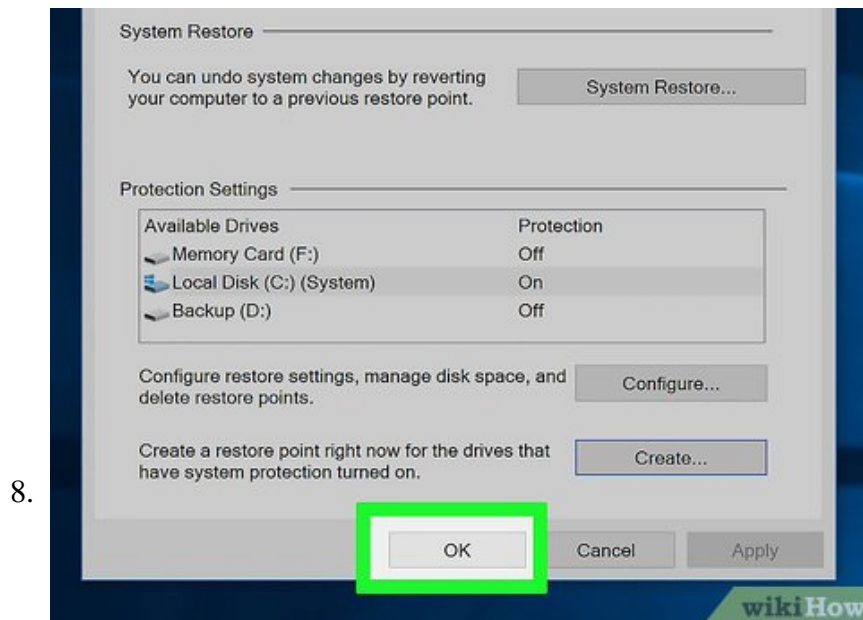
1. You don't have to enter a date or time, as System Restore will note the date and time at which the point is created.



Click . It's below the text box. This will create your restore point, though the restore point may take a couple of minutes to create.



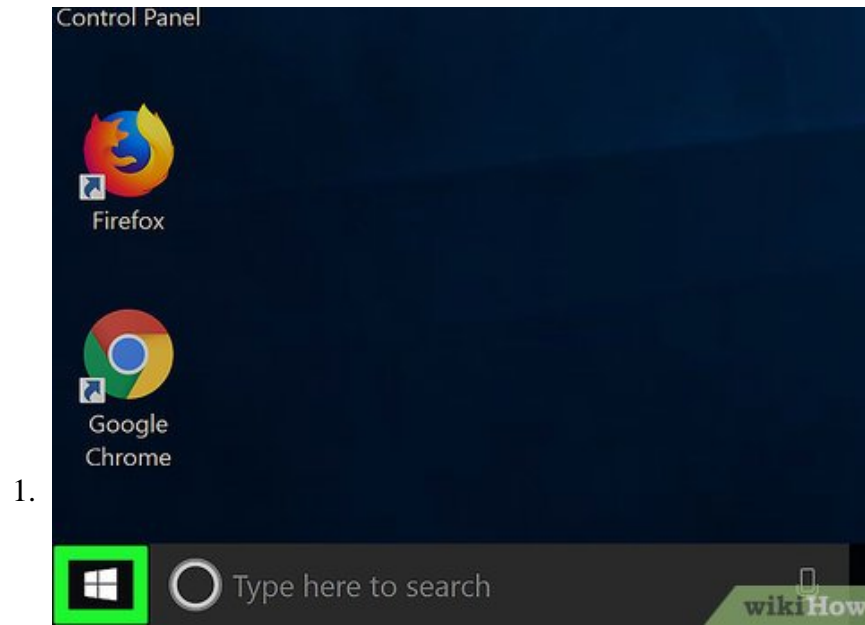
Click when prompted. This is at the bottom of the window.



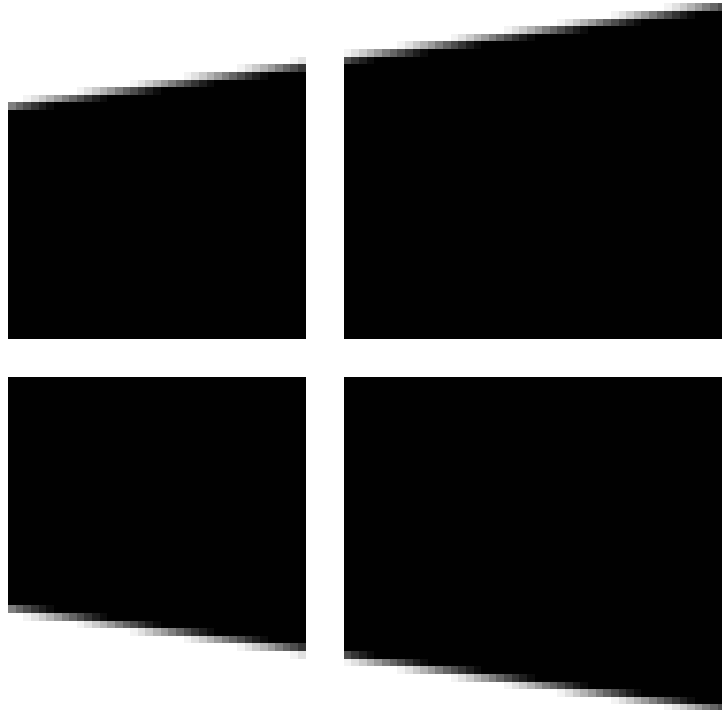
Click . It's at the bottom of the System Restore window. Doing so will close the System Restore window. You can now proceed with restoring your computer whenever need be.

Part 2 of 3:

Restoring from the Desktop

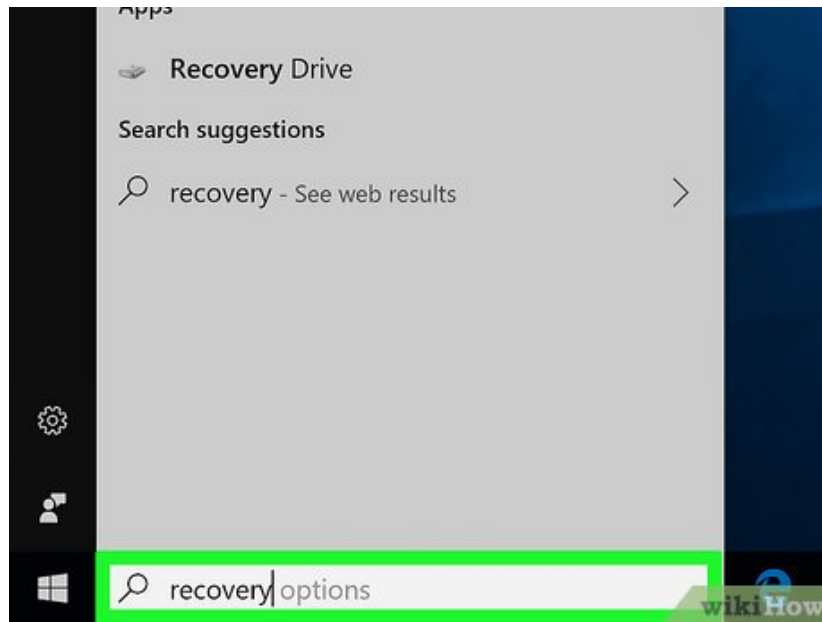


Open Start



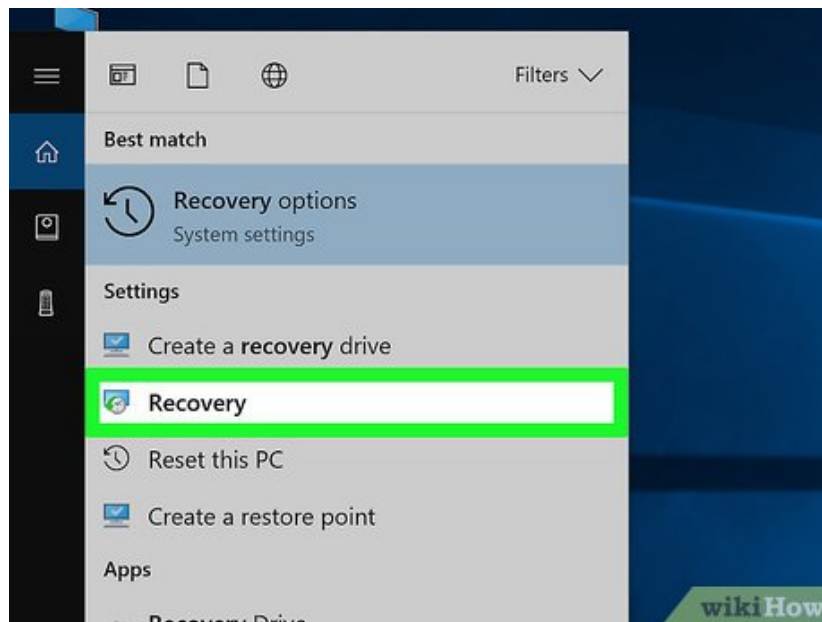
. Click the Windows logo in the bottom-left corner of the screen.

2.

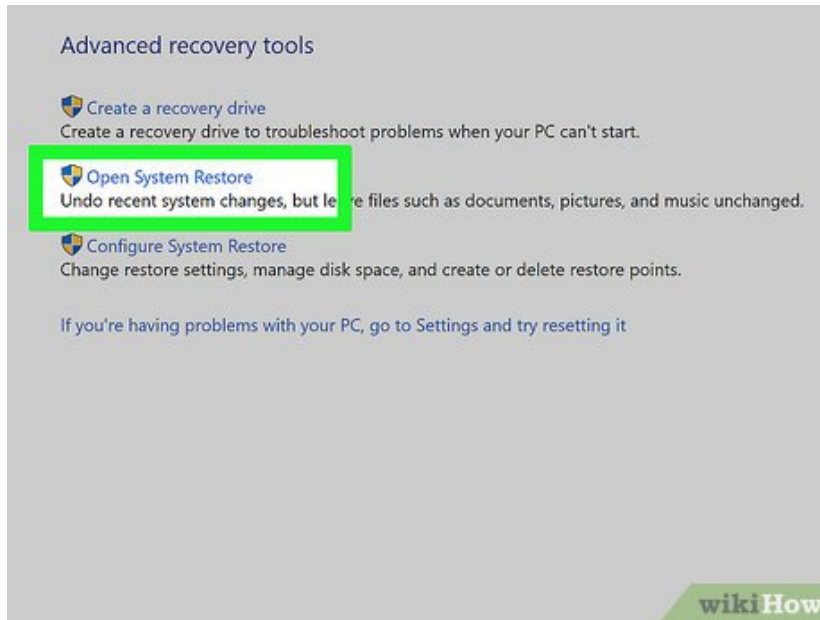


Type **recovery** into Start. Doing so will search your computer for the "Recovery" program.

3.

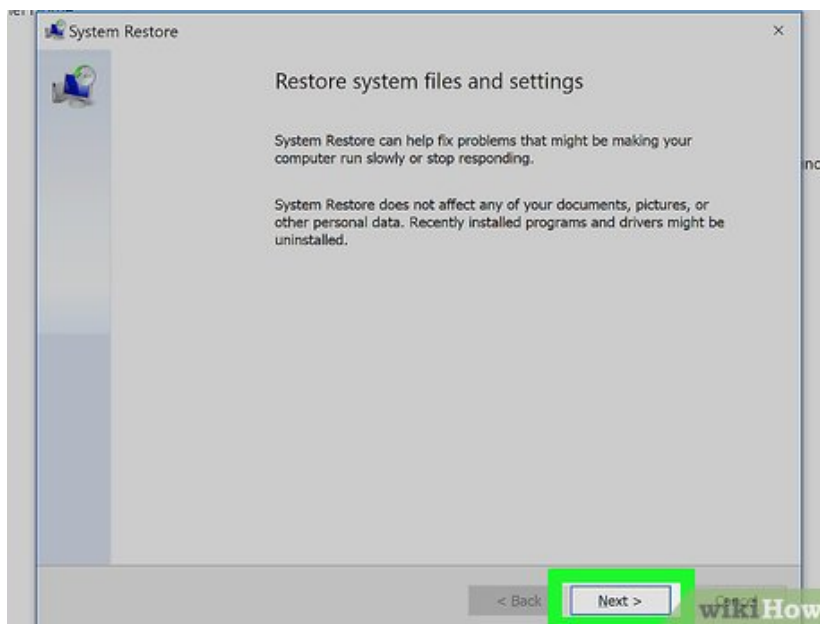


Click **Recovery**. It's a blue computer monitor-shaped icon at the top of the Start window. This will open the Recovery window.



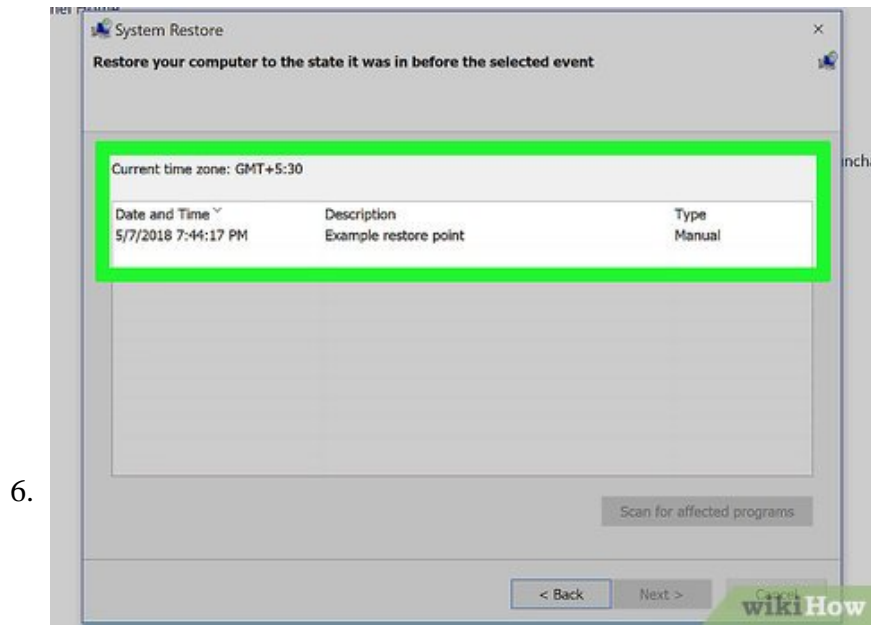
4.

Click **Open System Restore**. This link is near the top of the Recovery window. Doing so opens the System Restore window.

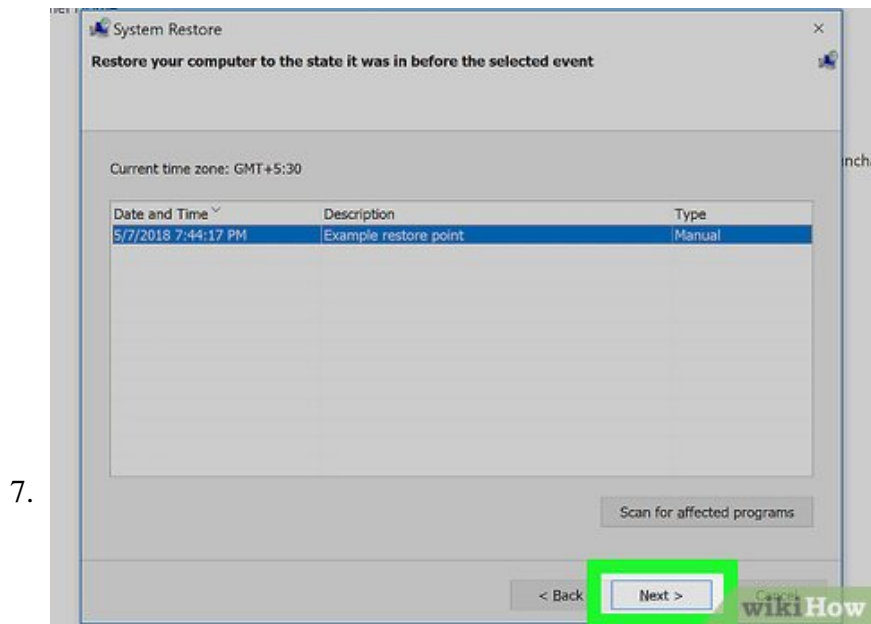


5.

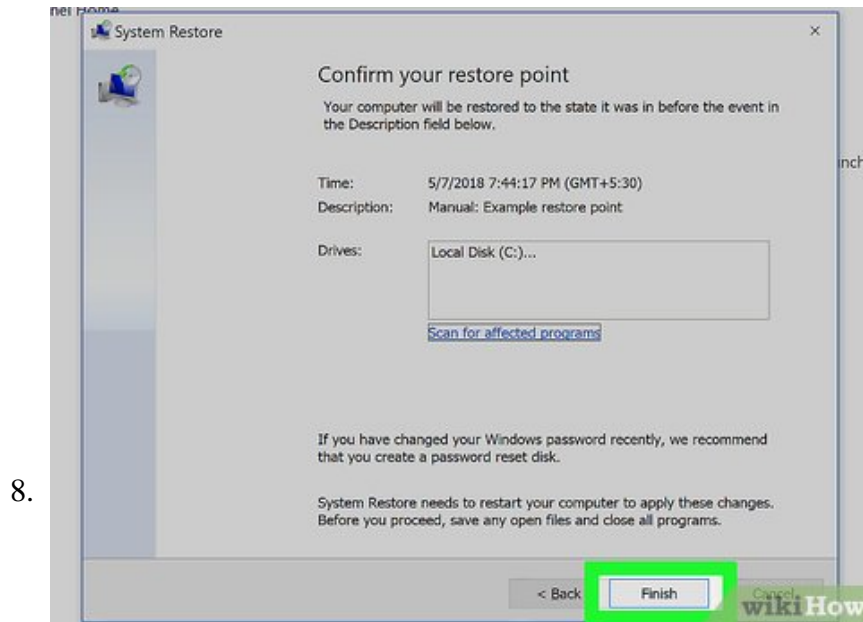
Click **Next**. It's at the bottom of the window.



Select a restore point. Click your restore point's name in the middle of the page. Make sure that the date to the left of this point is correct before continuing.



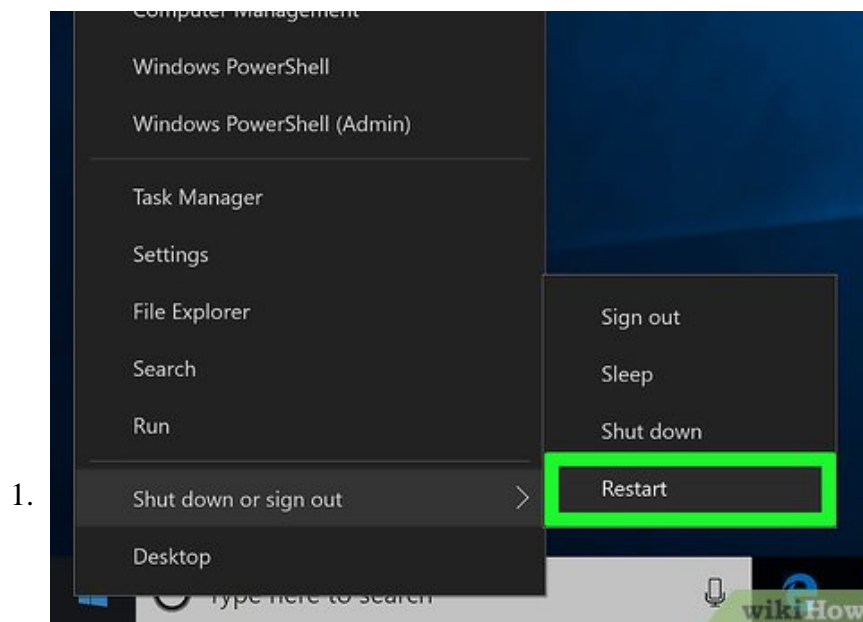
Click **Next**. This is at the bottom of the page.



Click **Finish**. It's at the bottom of the System Restore window. Doing so will prompt your computer to begin restoring. This process may take several minutes to over an hour, and your computer will restart at least once during the process.

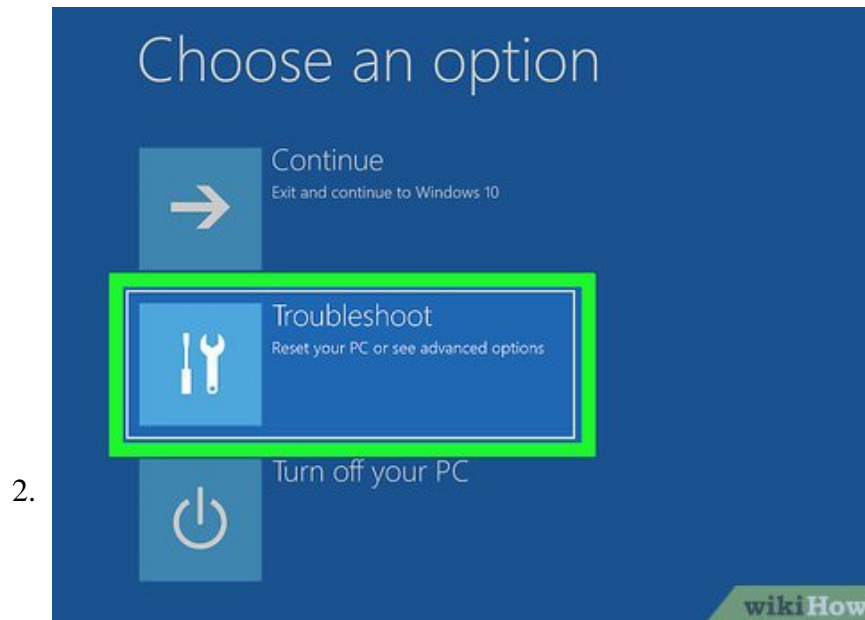
Part 3 of 3:

Restoring from the Advanced Settings Menu

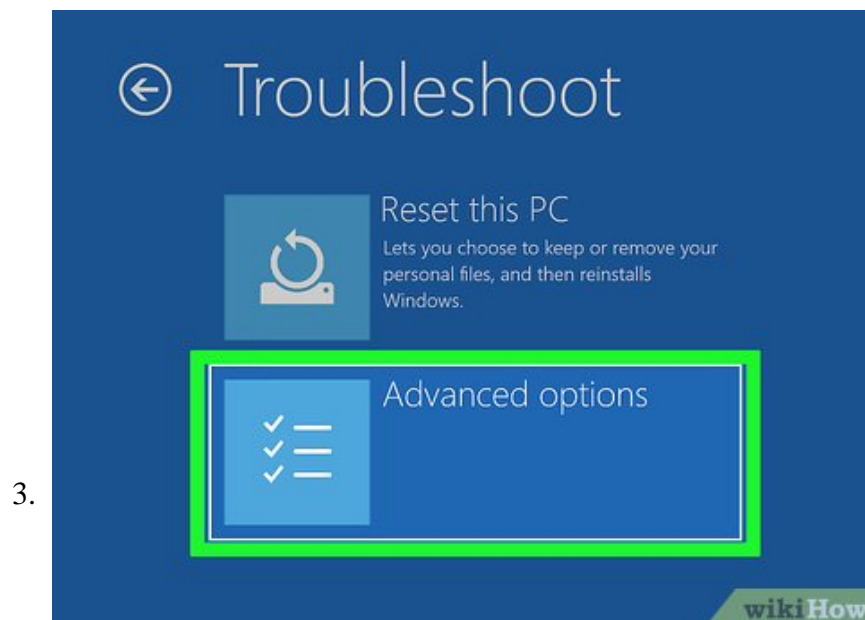


Open the Advanced Settings menu. This is helpful if your computer is trapped in a restart cycle. Simply wait for the "Press [key] for advanced options" (or a similar phrase) prompt to appear when your computer is starting up, then press the key listed in the "[key]" section.

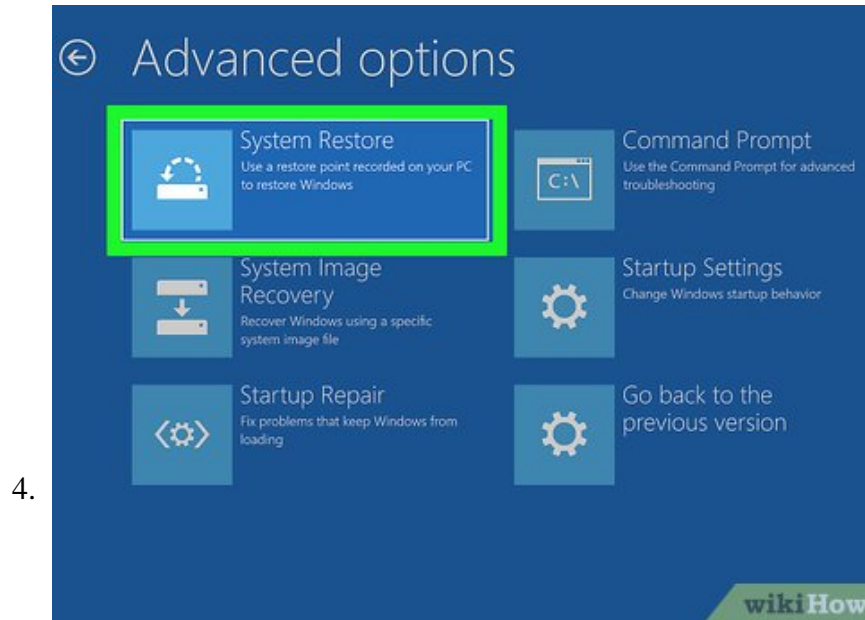
1. If you're here because of a blue screen of death, just wait for the "Choose an option" screen to appear after a few minutes.
2. To access the Advanced Settings menu from the desktop, open **Start**, click the **Power** icon in the lower-left side, hold down **Shift** while clicking **Restart**, and release **Shift** when the Advanced Options screen appears.



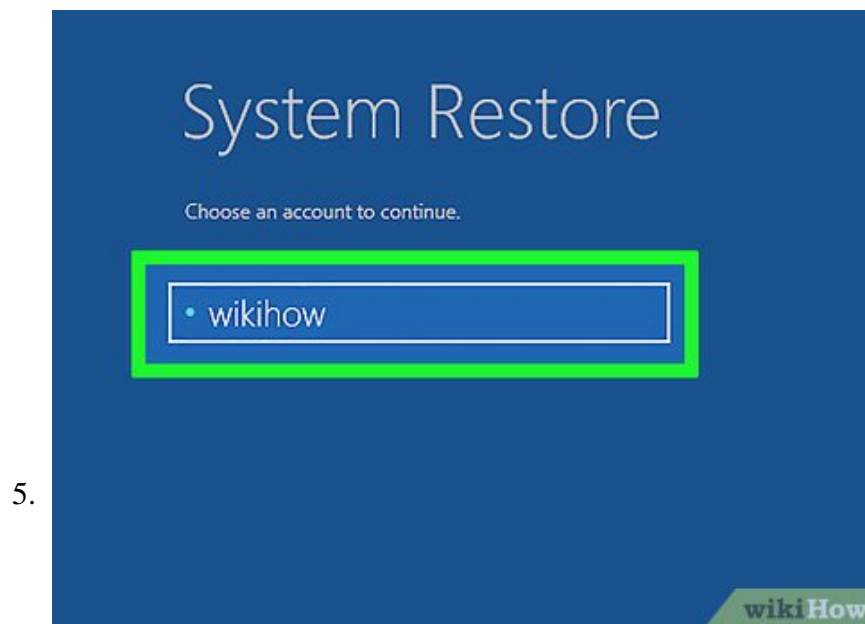
Click **Troubleshoot**. It's a symbol of a screwdriver and a wrench on this page.



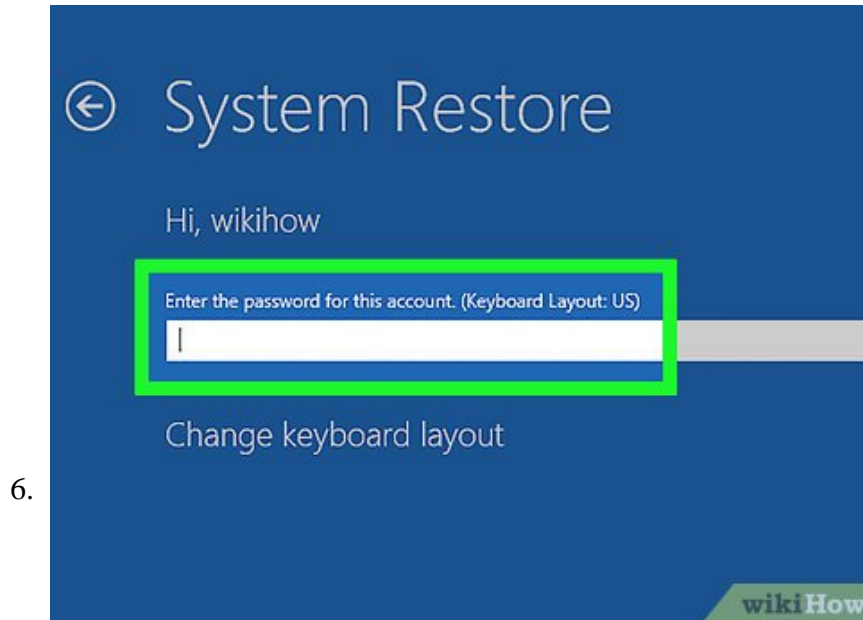
Click **Advanced options**. You'll find this on the "Troubleshoot" page.



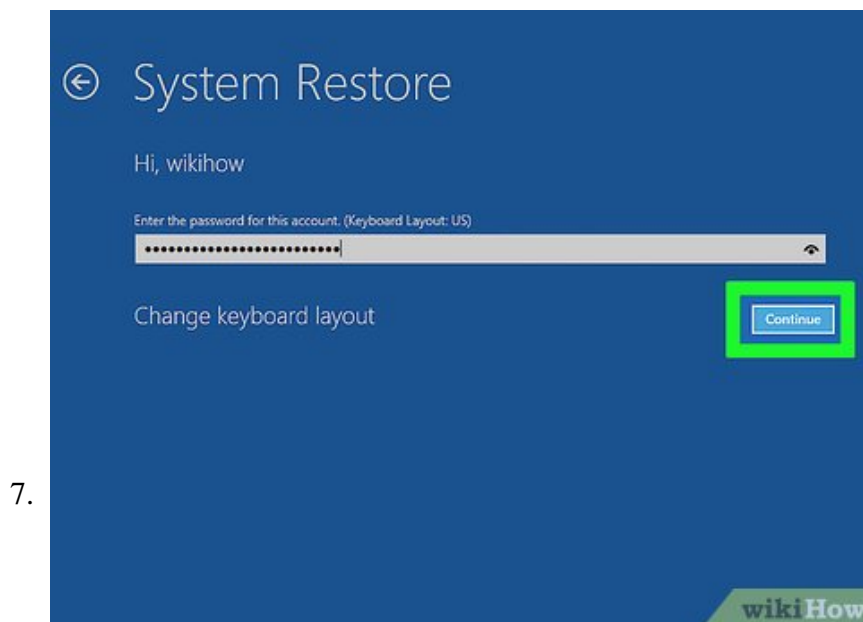
Click **System Restore**. It's the top option on the "Advanced options" page. Doing so will take you to the System Restore sign-in page.



Select your account. Click you account's name. If you only have one account on your computer, there should only be one name here.

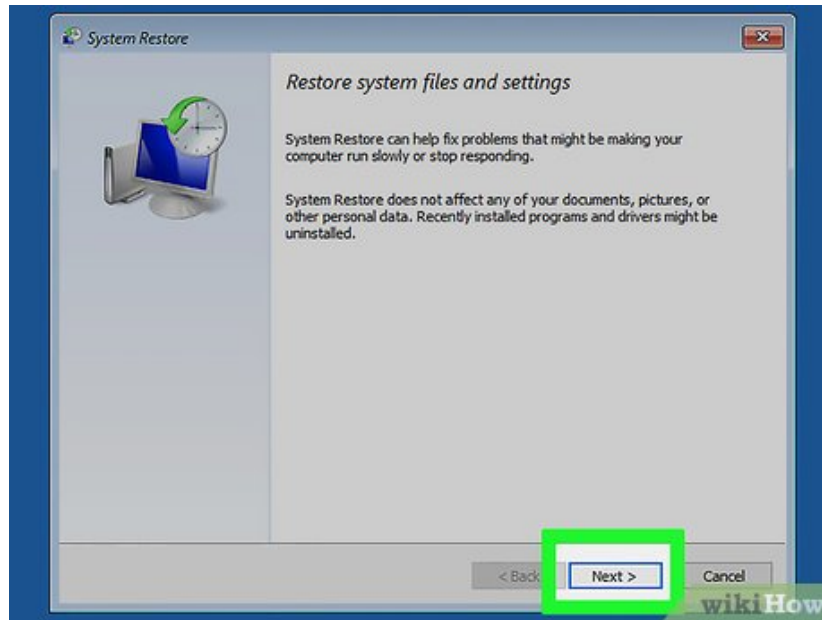


Enter your account password. This password may be different than the password that you use to log into your Microsoft account depending on your settings.



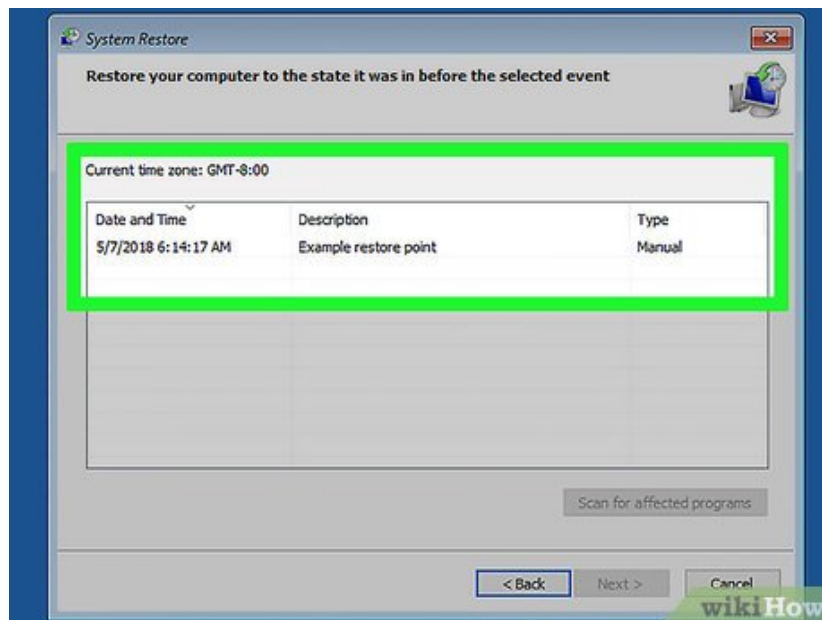
Click **Continue**. Doing so will submit your password and log you into your account.

8.



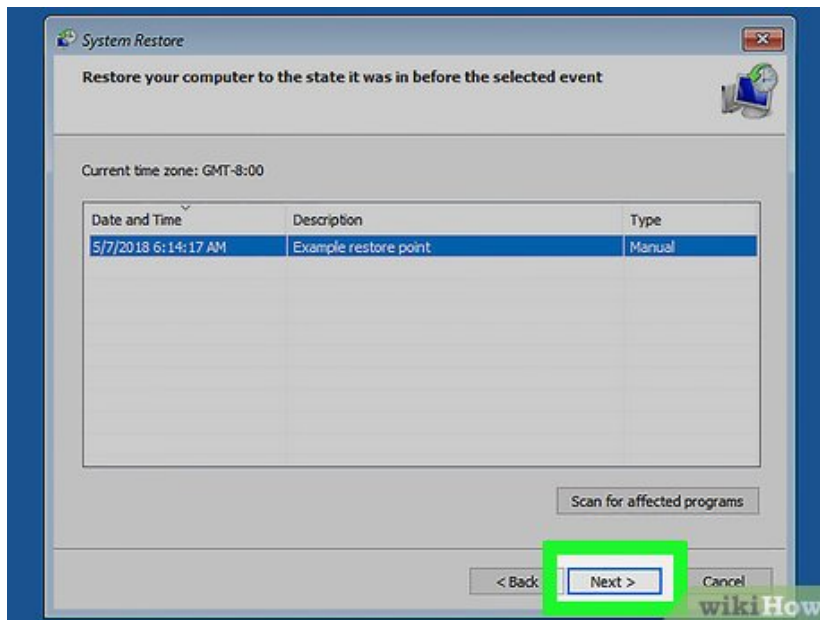
Click **Next**. It's at the bottom of the System Restore window.

9.



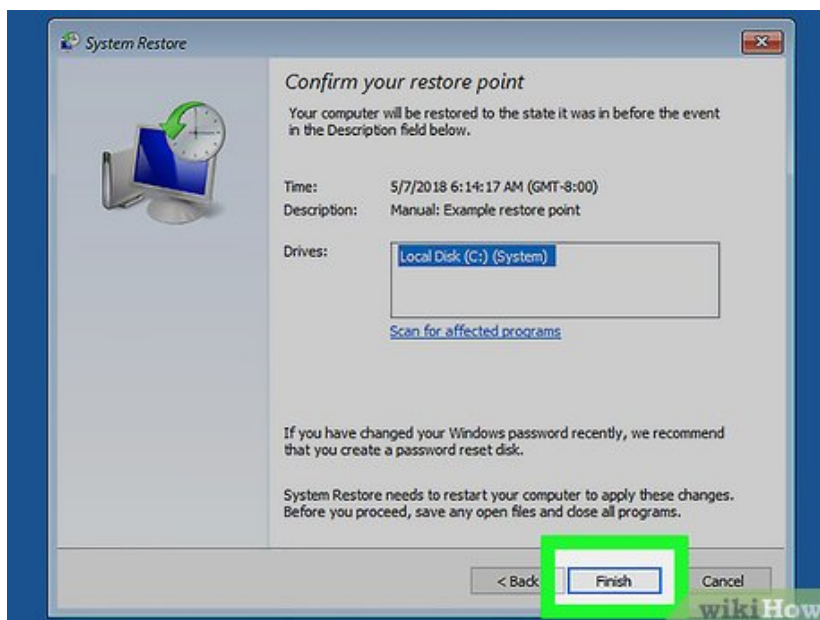
Select a restore point. Click the point that you want to restore. Make sure that the date to the left of the restore point's name is accurate.

10.



Click **Next**. It's at the bottom of the window.

11.



Click **Finish**. This option is at the bottom of the window. Doing so will prompt your computer to begin restoring. This process may take several minutes to over an hour, and your computer will restart at least once during the process.

You finished reading the article "**How to Do a System Restore**" edited by the [TipsMake](#) team. We hope this article has provided you with many useful tech tips and tricks. You can search for similar articles on tips and guides. Thank you for reading and for following us regularly.