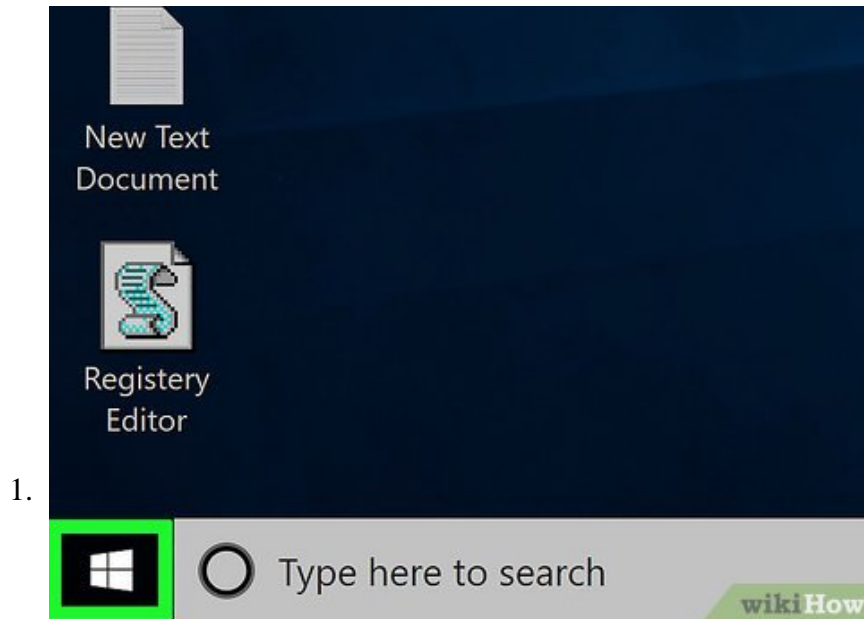


# How to Disable McAfee

This wikiHow teaches you how to temporarily turn off McAfee Security Center on your Windows or Mac computer. Disabling McAfee will not remove it from your computer. Keep in mind that, if McAfee is your only antivirus software, turning it...

Method 1 of 2:

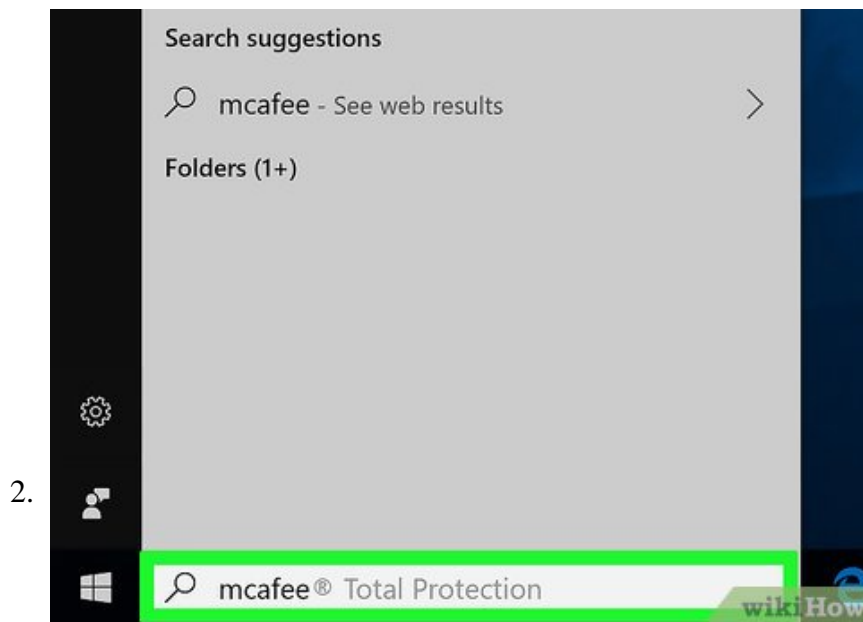
## On Windows



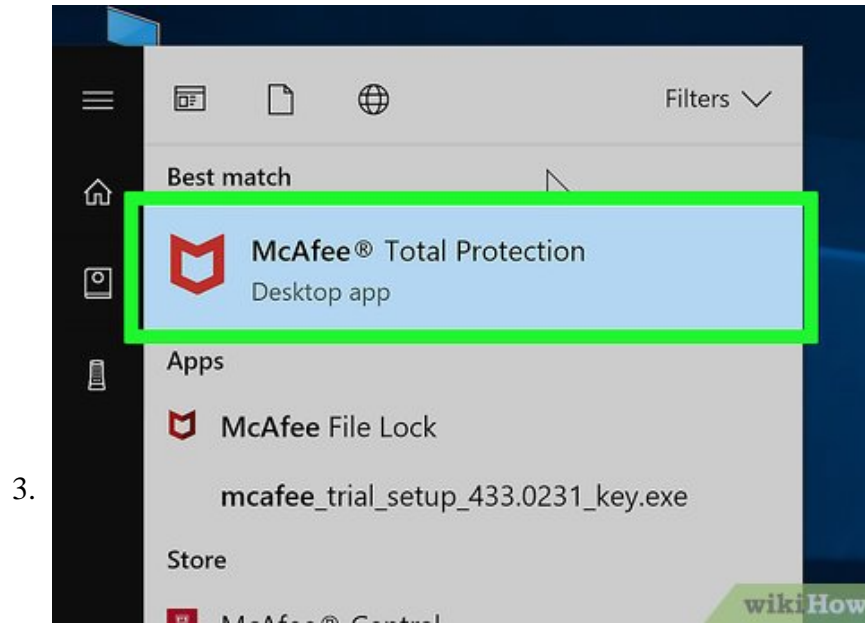
Open Start



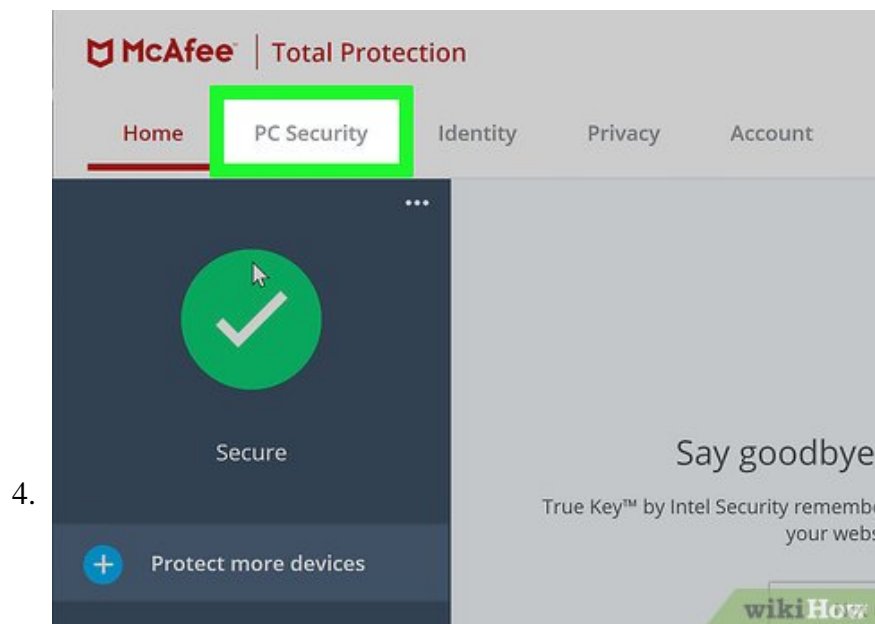
. Click the Windows logo in the bottom-left corner of the screen, or press ? Win.



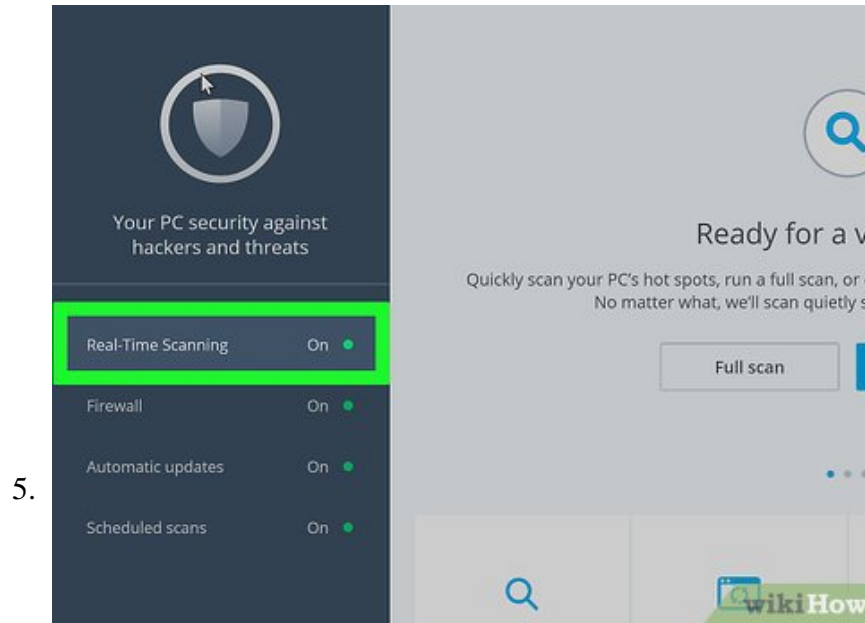
Type **mcafee** into Start. Doing so searches your computer for the McAfee program.



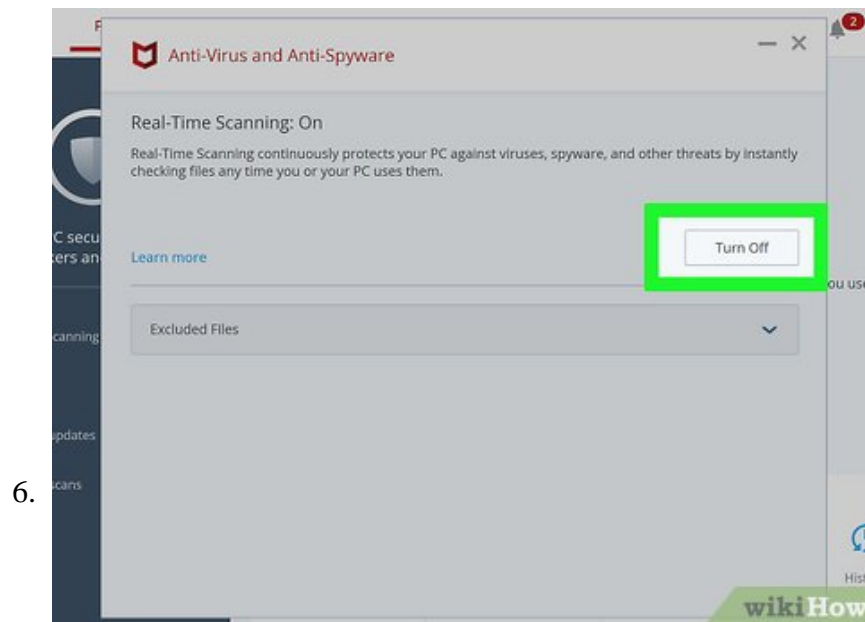
Click **McAfee® TotalProtection**. This should be at the top of the Start window, with the subheading "Desktop app" below its name. Doing so opens McAfee.



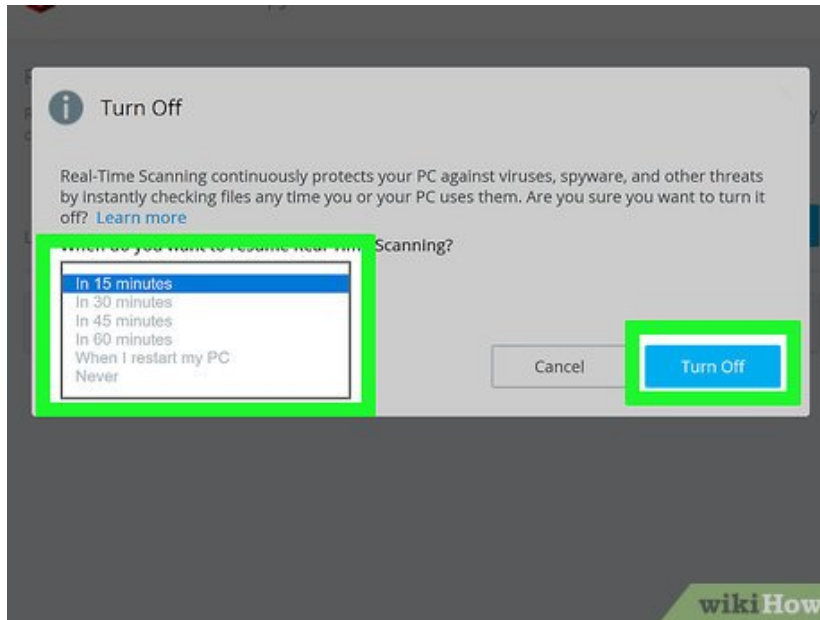
Click the **PC Security** tab. It's in the upper-left corner of the McAfee window.



Click **Real-Time Scanning**. This tab is on the left side of the McAfee window.

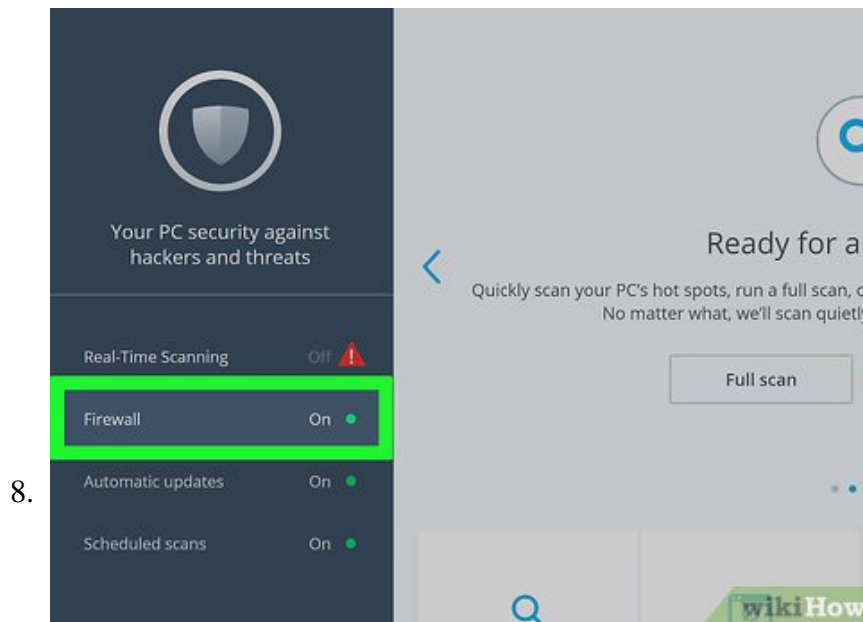


Click **Turn Off**. It's in the upper-right side of the Real-Time Scanning page.

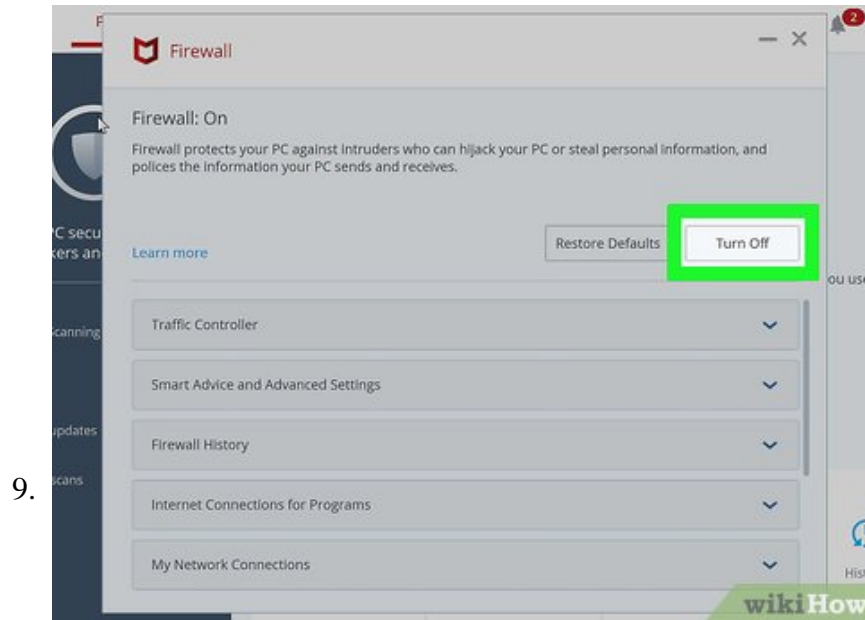


Select a time limit, then click **Turn Off**. You can set a time for real-time scanning to reactivate in the "When do you want to resume Real-Time Scanning?" box. The default is 15 minutes.

1. If you want to disable McAfee until you manually turn it back on, select **Never** for the time limit.
2. You can exit this window after turning off Real-Time Scanning.

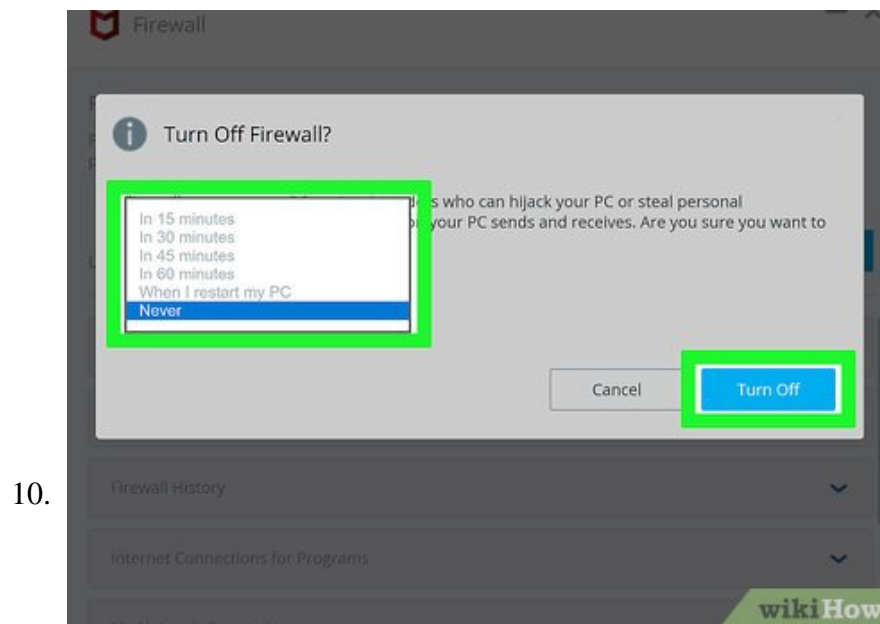


Click the **Firewall** tab. This option is below the **Real-Time Scanning** tab on the left side of the window.

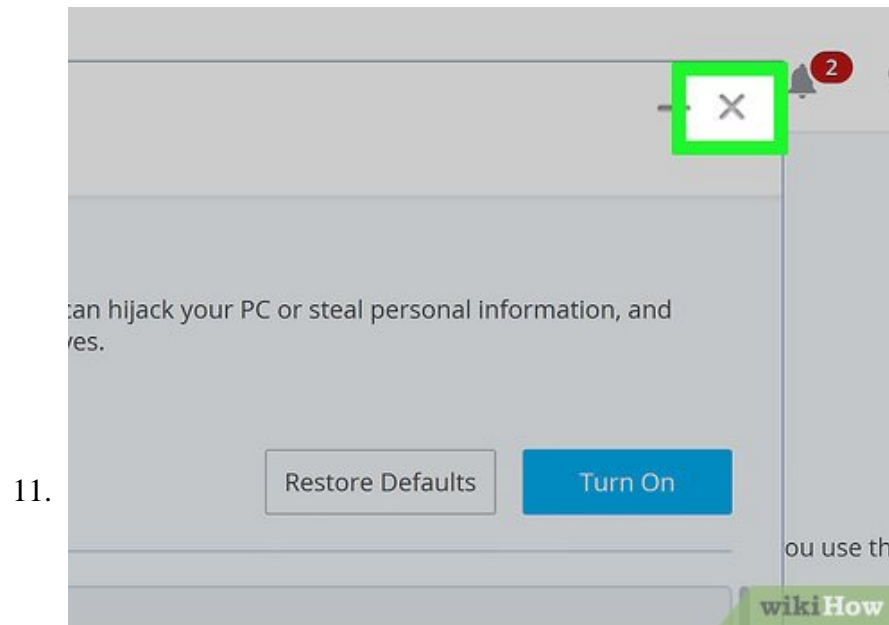


Click **Turn Off**. It's in the upper-right side of the page.

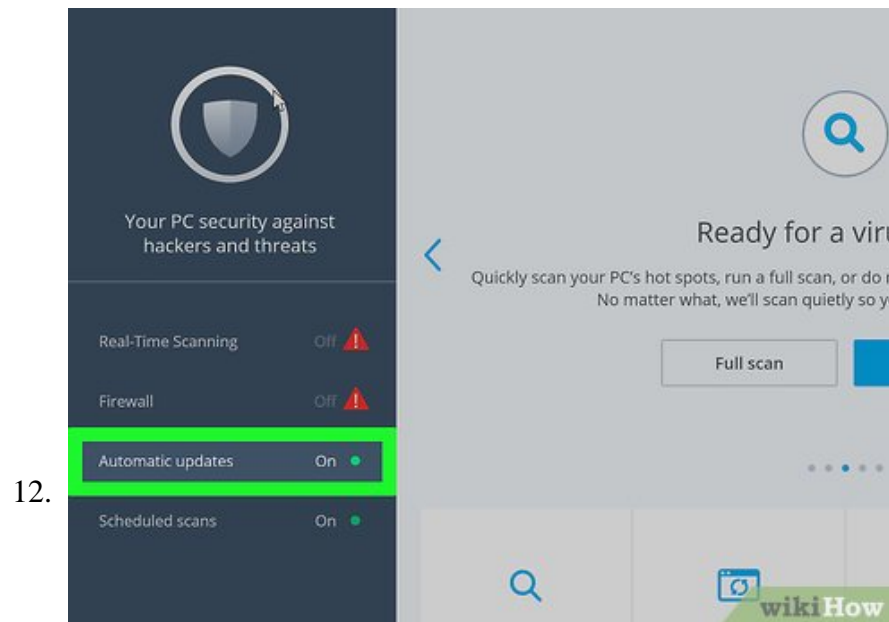
1. If your Firewall page is blank, your McAfee Firewall is already off; you can skip the next two steps.



Select a time limit, then click **Turn Off**. Doing so will disable the McAfee Firewall until the time limit expires.

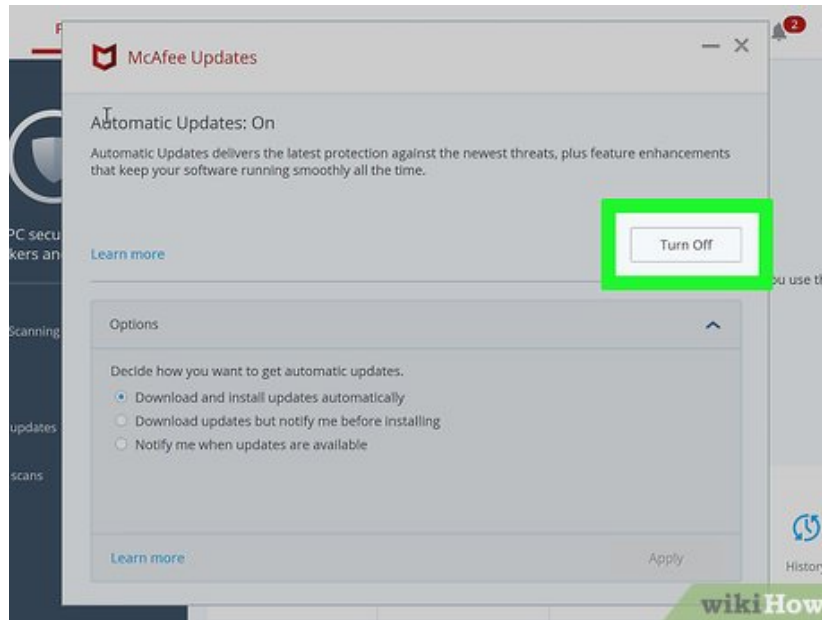


**Exit the Firewall window.** Click **X** in the top-right corner of the Firewall window.



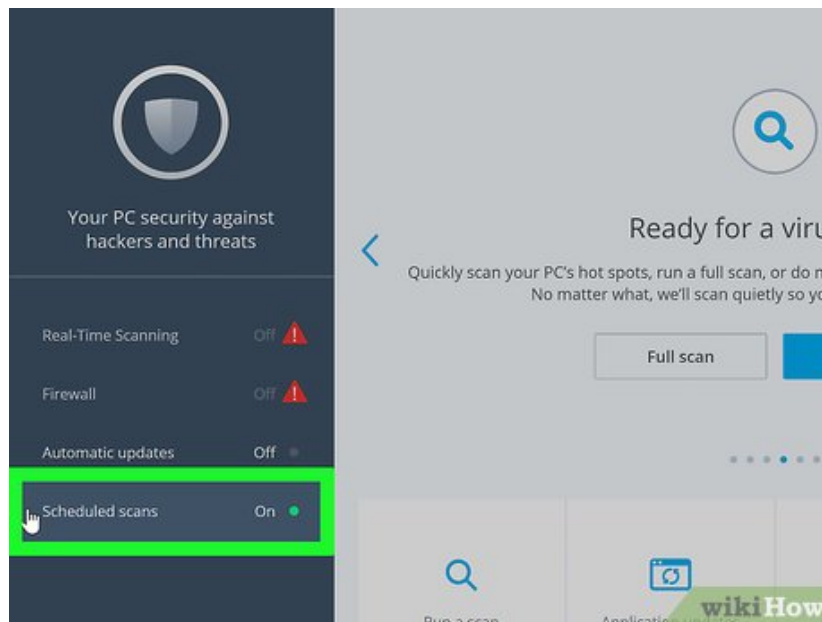
Click **Automatic updates**. This option is below **Firewall** on the left side of the page.

13.

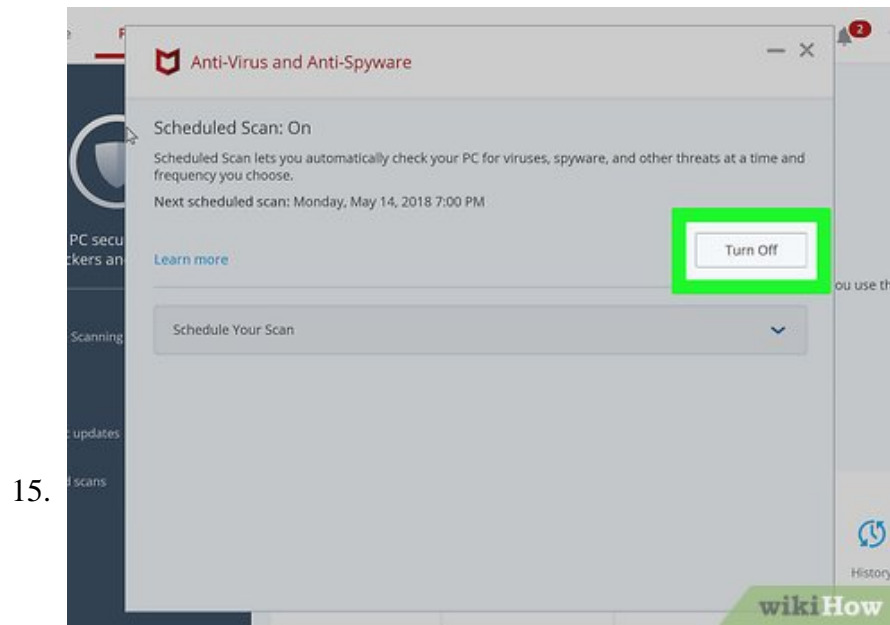


Click **Turn Off**. It's in the top-right corner of the Automatic Updates page.

14.



Exit the Automatic Updates page, then click **Scheduled scans**. The Scheduled scans option is just below Automatic updates.

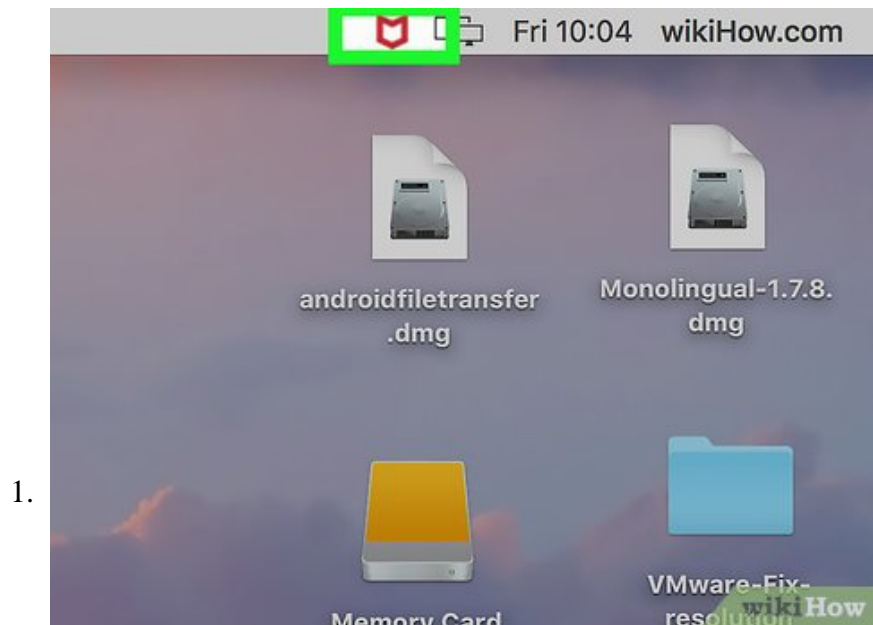


Click **Turn Off**. It's in the top-right corner. All of McAfee's services are now disabled.

16. **Remove McAfee from your PC.** If all else fails, you can disable McAfee's presence on your computer by uninstalling it completely.

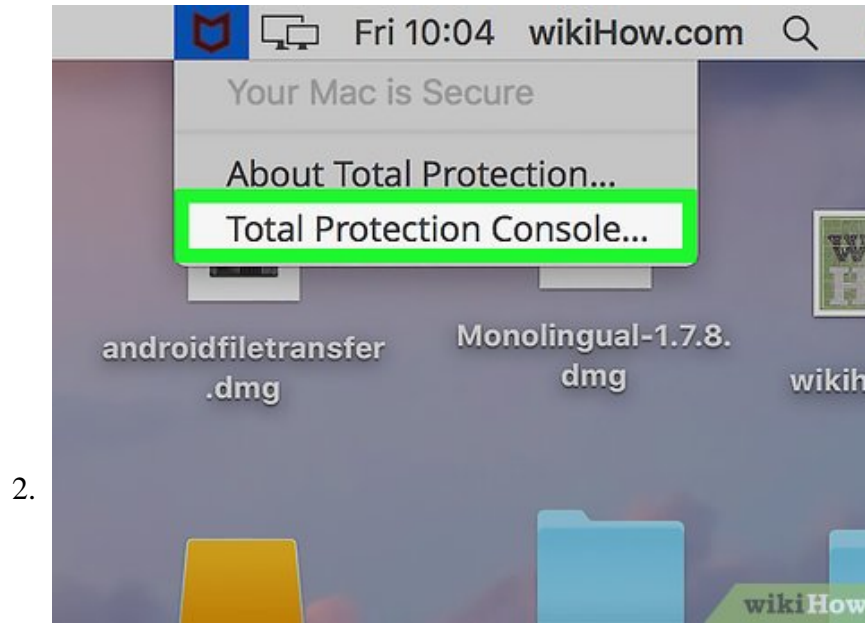
Method 2 of 2:

## On Mac

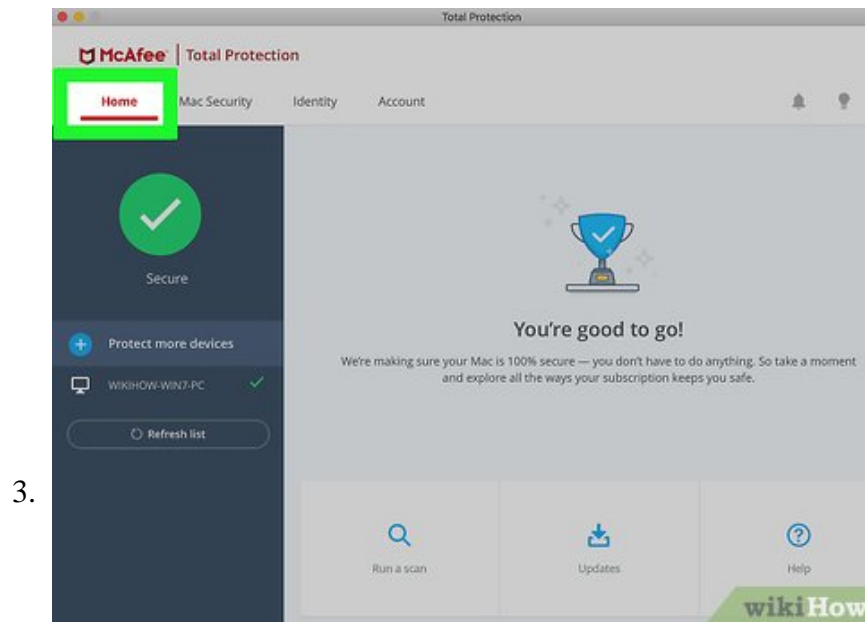


**Click the McAfee icon.** It's the white "M" on the red shield icon in the top-right side of your Mac's menu bar.

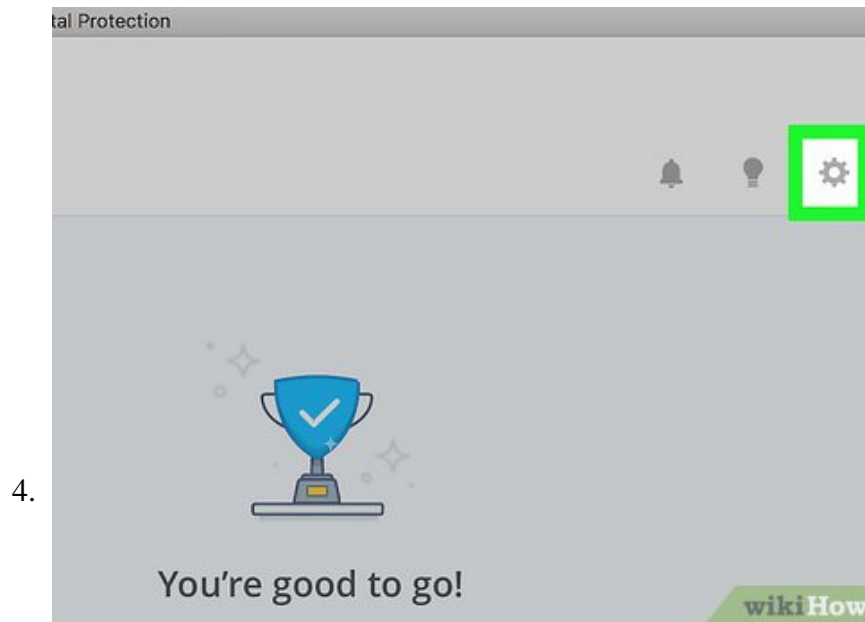
1. If you don't see this icon, click the magnifying glass icon in the top-right corner, type in "McAfee", and click the **Internet Security** option.



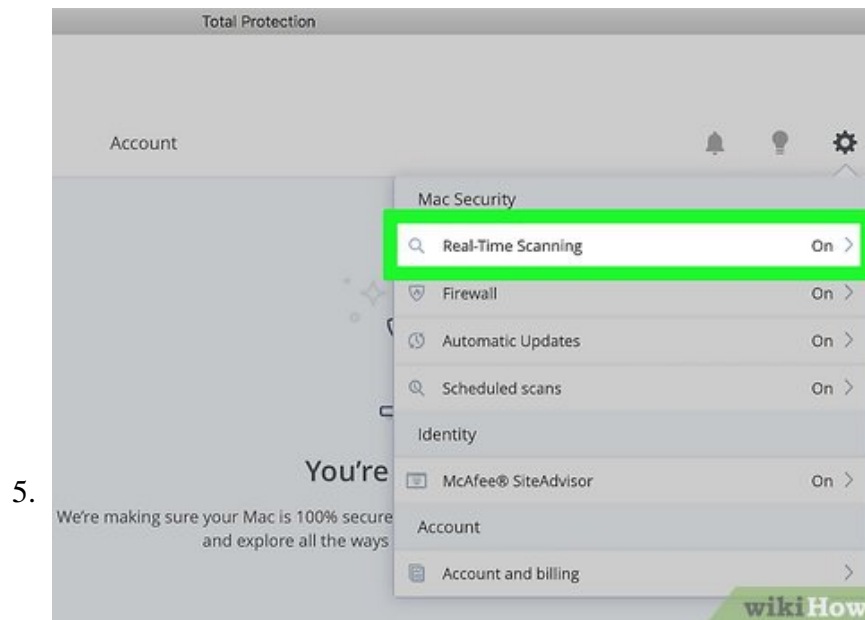
Click **Total Protection Console...**. This is near the bottom of the McAfee drop-down menu.



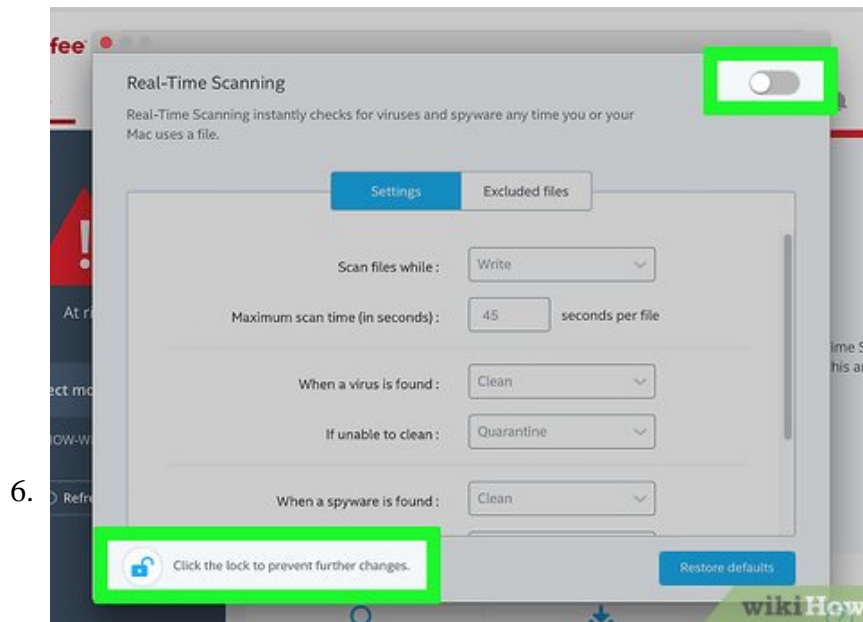
Click the **Home** tab. It's in the upper-left side of the window.



Click the gear icon. You'll find this in the top-right corner of the Home tab.

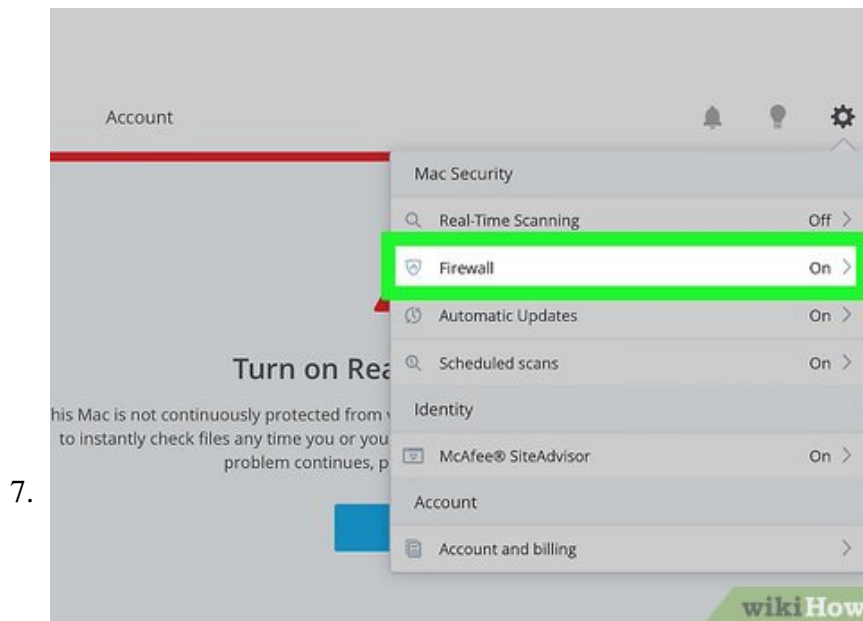


Click **Real-Time Scanning**. It's near the top of the gear drop-down menu. Doing so opens a window for Real-Time Scanning.

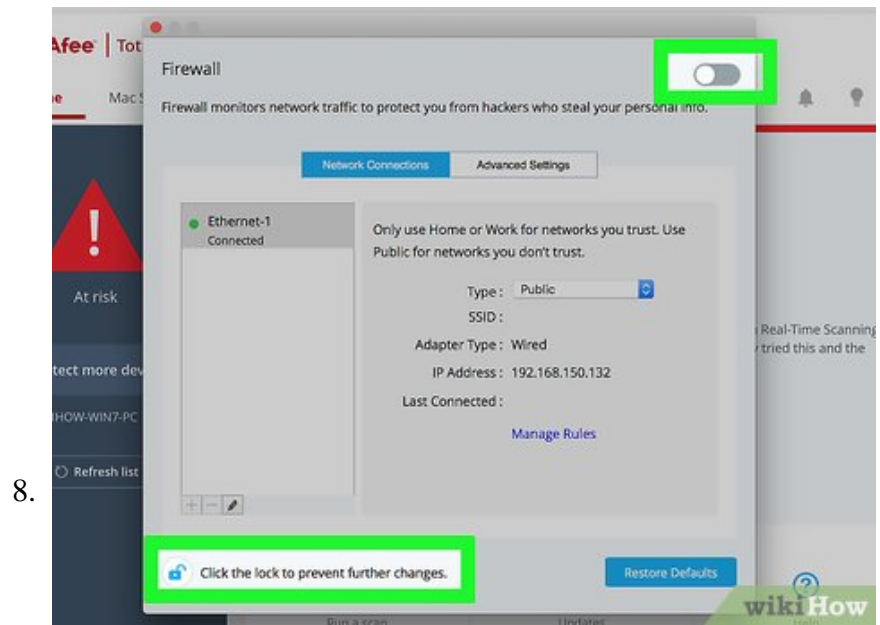


**Disable Real-Time Scanning.** To do so:

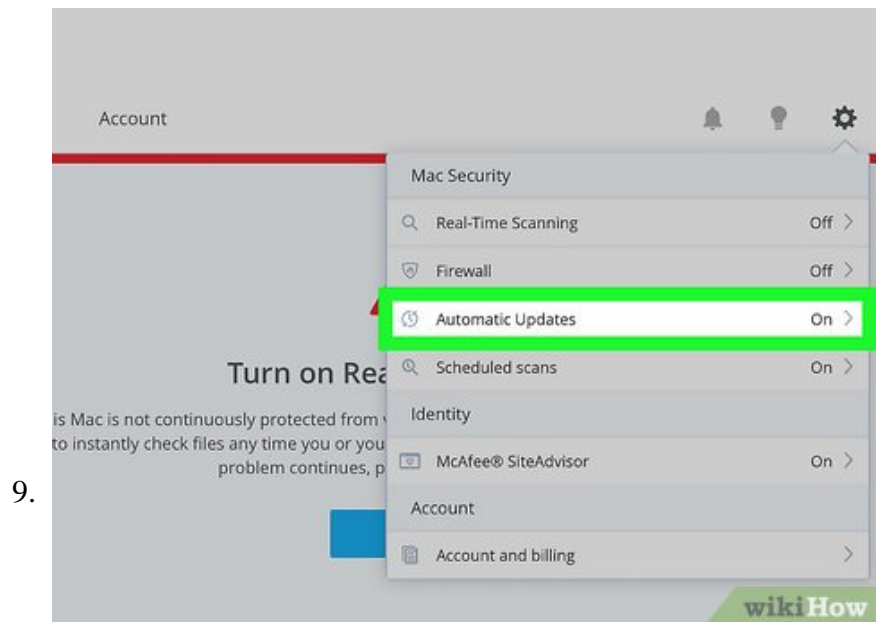
1. Click the **lock icon**.
2. Enter your **administrator password** and click **OK**.
3. Click the **Real-Time Scanning** switch in the top-right corner.
4. Close the Real-Time Scanning window.



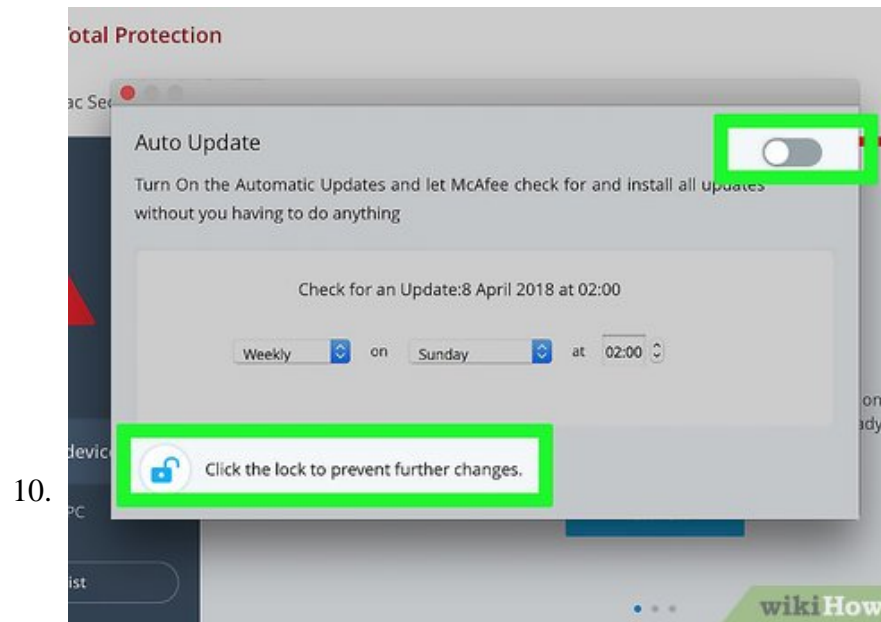
Click the gear icon again, then click **Firewall**. The **Firewall** tab is just below the **Real-Time Scanning** option.



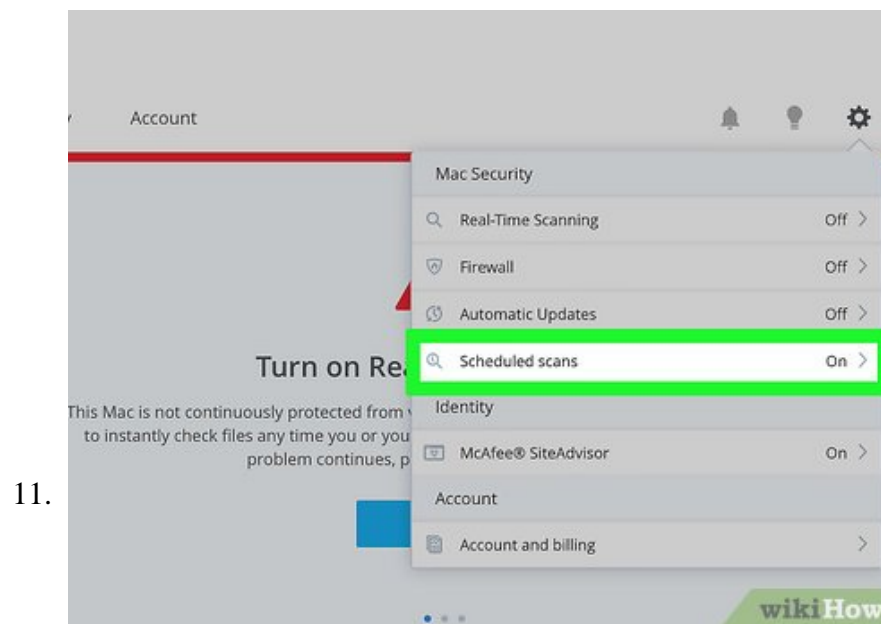
**Disable McAfee's Firewall.** You'll do this in the same way in which you disabled Real-Time Scanning.



**Click the gear icon again, then click **Automatic Updates**.** It's below the **Firewall** option.

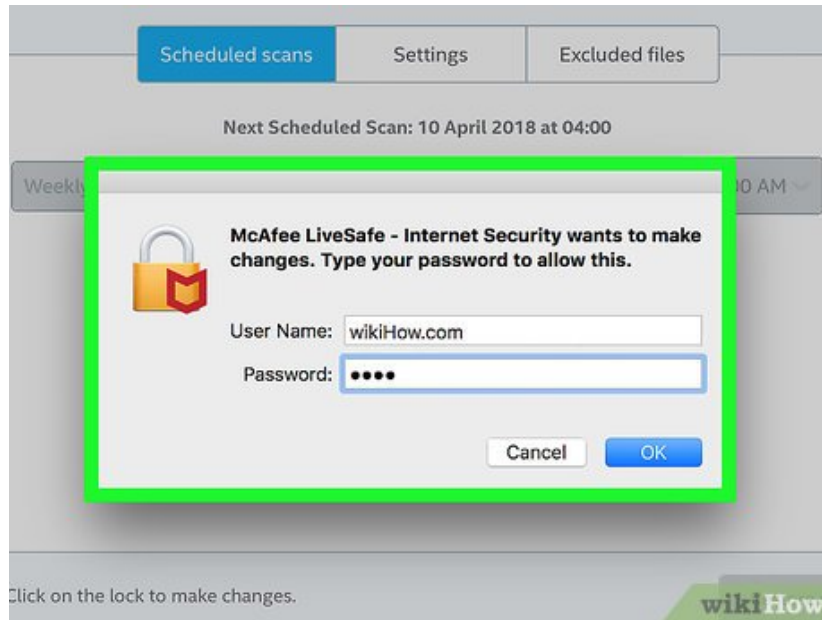


**Disable automatic updates.** You'll do this in the same way in which you disabled Real-Time Scanning and the Firewall.



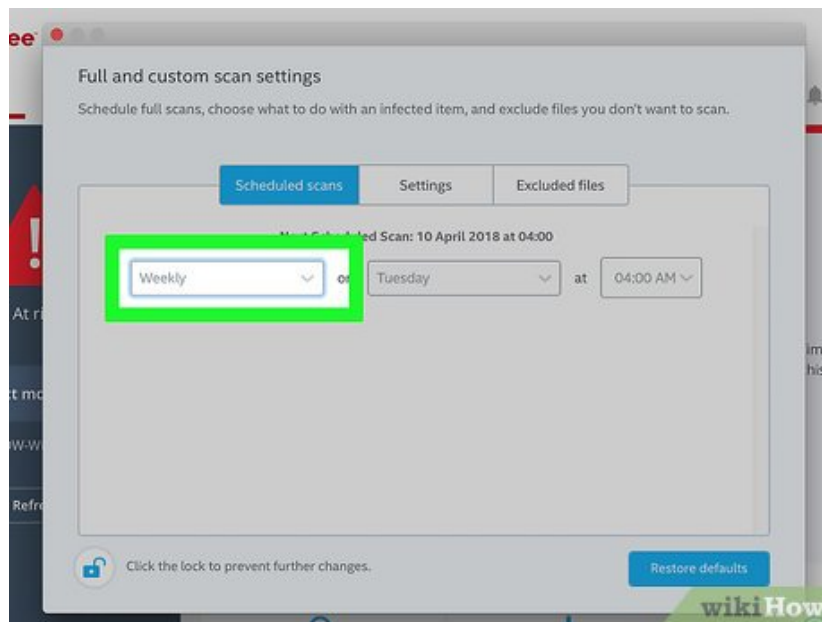
**Click the gear icon again, then click **Scheduled scans**.** It's at the bottom of the "Mac Security" group of options.

12.



**Unlock the Full and Custom Scan Settings page.** Click the gear icon and enter your administrator password, then click **OK**.

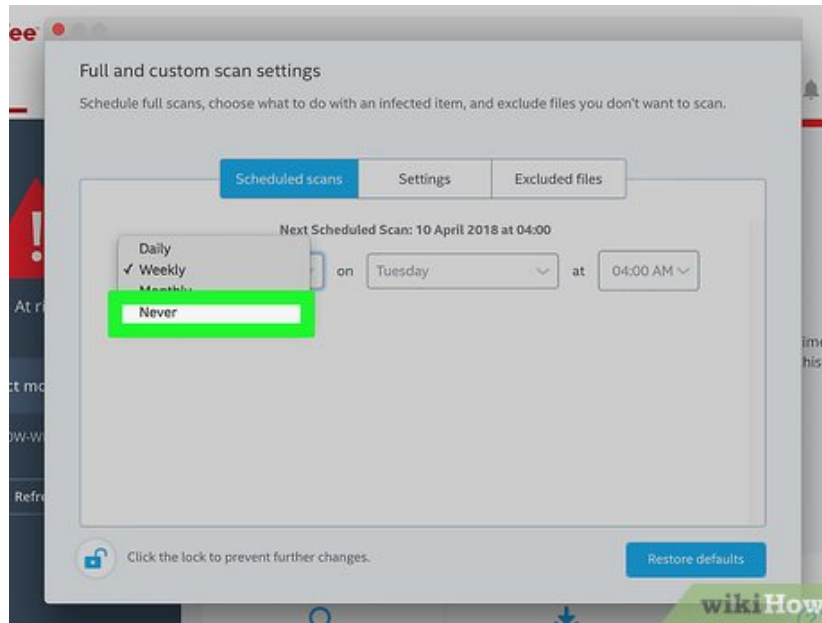
13.



**Click the Weekly drop-down box.** It's on the far-left side of the "Scheduled scans" page.

1. If you don't see this option, click the **Scheduled scans** tab near the top of the page.

14.



Click **Never**. Doing so prevents McAfee from re-activating itself to scan your computer.

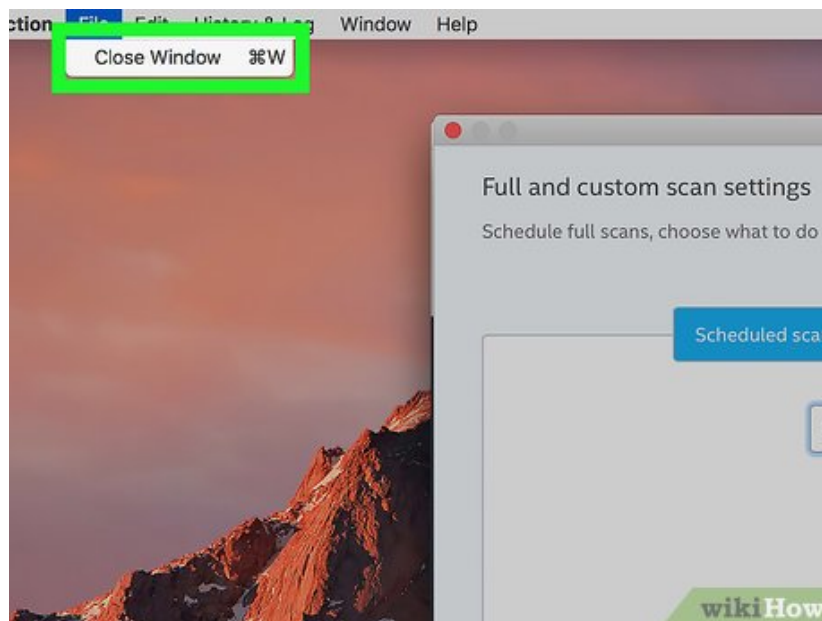
15. Click the gear icon again, then click **McAfee SiteAdvisor**. It's near the bottom of the drop-down menu.

1. SiteAdvisor is responsible for McAfee's presence in your Mac's browsers.

16. **Disable SiteAdvisor.** Click the switch in the top-right corner of the SiteAdvisor page to do so.

1. You may have to click the lock icon and enter your administrator password in order to be able to click the switch.

17.



**Close the settings window.** Your Mac's McAfee program should now be completely disabled.

18. **Remove McAfee from your Mac.** If you want to completely remove McAfee's notifications, icons, and all other forms of its presence from your Mac, you'll have to uninstall McAfee itself. To do so:

1. Open



**Finder.**

2. Click the **Applications** folder on the left side of Finder, or click **Go** and then click **Applications** in the drop-down menu.
3. Find and double-click the **McAfee® Total Protection Uninstaller** app.
4. Click **Continue** when prompted.
5. Enter your administrator password when prompted, then click **OK**.
6. Click **Finish** once McAfee finishes uninstalling.

You finished reading the article "**How to Disable McAfee**" edited by the [TipsMake](#) team. We hope this article has provided you with many useful tech tips and tricks. You can search for similar articles on tips and guides. Thank you for reading and for following us regularly.