

# How to disable iphlpsvc in Windows 10

Iphlpsvc in Windows stands for Internet Protocol Helper Service. Disabling iphlpsvc will not damage the system, disrupt its general functionality or affect performance much.

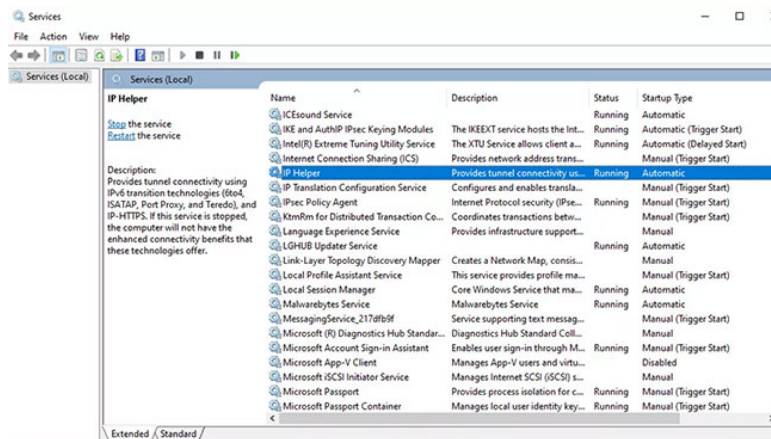
Iphlpsvc in Windows stands for Internet Protocol Helper Service. Its mission is to help access and modify network configuration settings for Windows 10 PCs. Iphlpsvc allows connections to take place on various Windows 10 network protocols, such as IPv6, Port Proxy, etc.

Disabling iphlpsvc will not damage the system, disrupt its general functionality or affect performance much.

## Stop iphlpsvc in Services

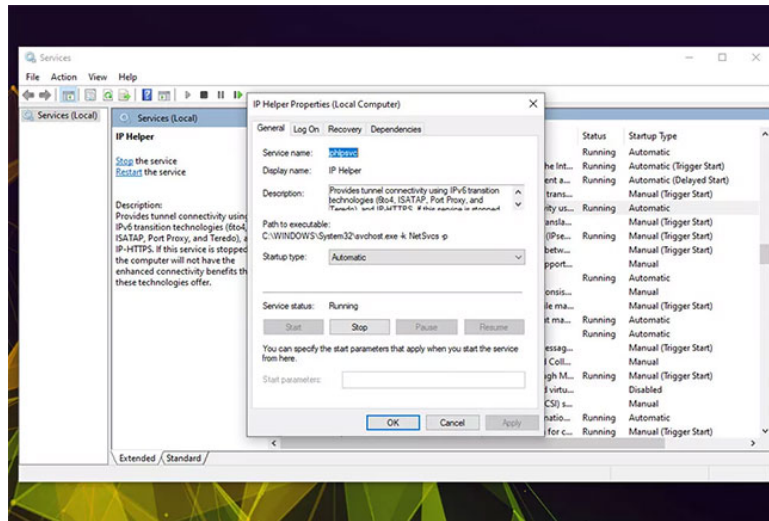
If you want to disable iphlpsvc, there are a few ways to do that. The quickest and easiest way is to stop the service.

1. Search for **Services** in the Windows 10 search bar and select the corresponding results.
2. In the **Services** window, ensure that **Services (Local)** is selected in the left column. Then scroll down the list to find the **IP Helper**.



Find the IP Helper

3. Double click on the **IP Helper** or right click and select **Properties**.
4. To temporarily disable the service, select the **Stop** button, then **Apply** and **OK**.



Select the Stop button

5. If you want to prevent it from running again, set **Startup Type** to **Disabled** using the drop-down menu. Then choose **Apply** and **OK**.

It is recommended to reboot the Windows 10 system after completing this step. When you return to Windows, open the **Services** menu again to make sure your changes take effect.

You can also reactivate iphlpsvc the same way, just revisit the **Services** menu and select the **Start** button. If you want iphlpsvc to automatically start with Windows, make sure that the **Startup Type** is selected as **Automatic**.

## How to disable iphlpsvc by Registry Editor

You can also disable the iphlpsvc service using the Windows Registry Editor.

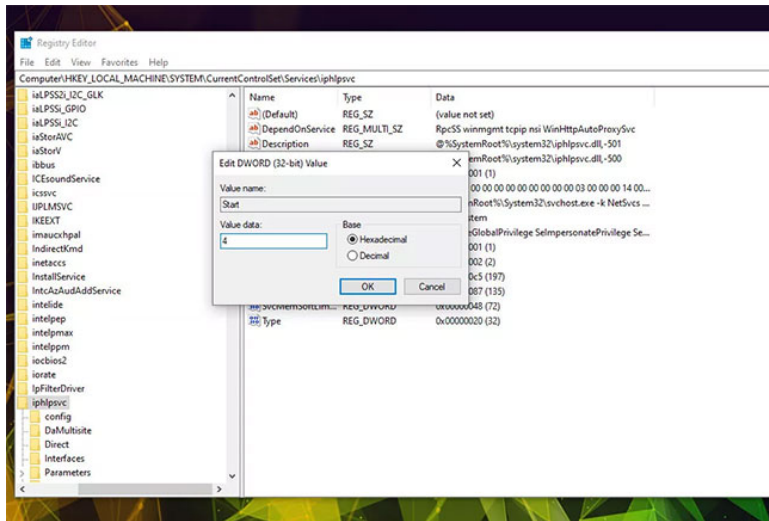
1. Open Registry Editor by pressing Win + R key and enter **regedit** in the **Run** box . Then click **OK**. Meet admin approval requirements.

2. Navigate to:

```
HKEY_LOCAL_MACHINE\SYSTEM\CurrentControlSet\Services\iphlpsvc
```

Then right-click it and choose **Modify**.

3. To disable it on startup with Windows, change the **Value data** to **4** . Choose **OK**.



Change Value data to 4

4. Close the window and restart the computer. Iphlpvc will no longer start with Windows.

If you want to revert iphlpvc to start automatically with Windows, repeat the steps above, but set the **Value data** to 2.

## How to disable iphlpvc using the Command Prompt

You can also disable the iphlpvc service using the Windows Command Prompt.

1. Open Command Prompt with admin rights.
2. To turn off iphlpvc on startup, enter the following and press Enter :

```
REG add 'HKLMSYSTEMCurrentControlSetservicesiphlpvc' /v Start /t REG_DWORD /d 4
```

3. Restart the PC. The iphlpvc service will be disabled.

If you want to reactivate iphlpvc at some point, follow these steps and enter the following information in CMD before pressing the Enter key:

```
REG add 'HKLMSYSTEMCurrentControlSetservicesiphlpvc' /v Start /t REG_DWORD /d 2
```

You finished reading the article "**How to disable iphlpvc in Windows 10**" edited by the [TipsMake](#) team. We hope this article has provided you with many useful tech tips and tricks. You can search for similar articles on tips and guides. Thank you for reading and for following us regularly.