

# The quickest way to disable Gemini in Gmail, Google Photos, and Chrome.

Detailed instructions on how to disable Gemini in Gmail, Google Docs, Google Photos, and Chrome in just a few steps.

Google is actively integrating Gemini into most of its products, from Gmail, Docs, and Photos to Chrome. For many, this is a useful feature. But there are also many who find these AI features annoying or unnecessary.

If you're one of those who want to return to the 'traditional' Google experience, you can absolutely turn off Gemini. Here's a detailed guide on how to do it.

## How to disable Gemini in Google apps

Google doesn't provide a single Gemini toggle button for all services. Instead, you need to disable each part individually within different settings. This makes it difficult for many people to find, but if you know the right location, you can disable Gemini fairly quickly.

### 1. Turn off Gemini in Gmail, Google Docs, and Google Drive.

To disable Gemini in Gmail, Docs, and Drive, you need to turn off **Google Workspace Smart Features** .

You should do this in Gmail on your browser because that's the simplest way.

The steps are as follows:

1. Open Gmail and log in to your Google account.
2. Tap the Settings icon (gear shape).
3. Select "See all settings"
4. In the General tab, scroll down to the "Google Workspace smart features" section.
5. Click "Manage Workspace smart feature settings"

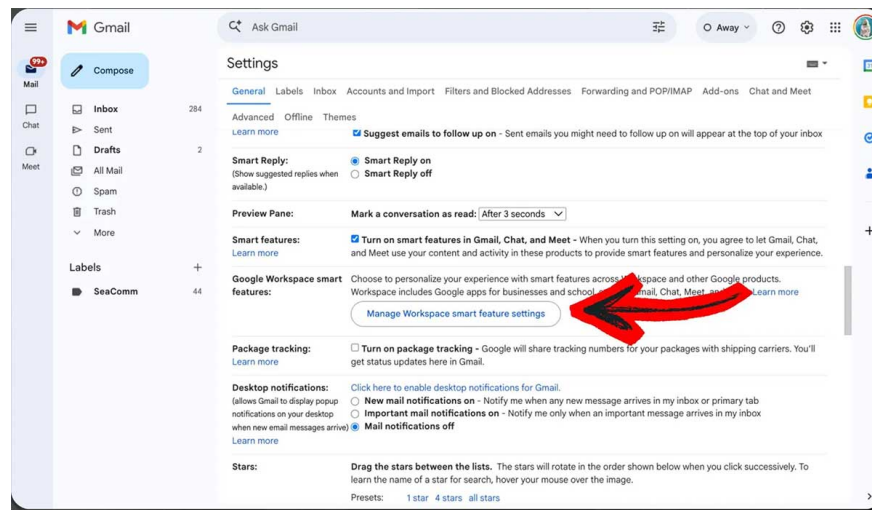
Here, you will see two options:

The first option is **Smart features in Google Workspace** (Gmail, Docs, Drive.). When enabled, Gemini can summarize content, create drafts, and find important information.

The second option is **Smart features in other Google products** like Maps or Wallet, which allow Gemini to provide suggestions and answers based on Workspace data.

You just need to turn off the first option to disable Gemini in Gmail, Docs, and Drive. If you want to disable it more completely, you can also turn off the second option, but this will remove some convenient features like automatic calendar suggestions.

After turning it off, the Gemini icons may still appear, but tapping them will prompt Google to re-enable Smart Features. This indicates that Gemini has been disabled.



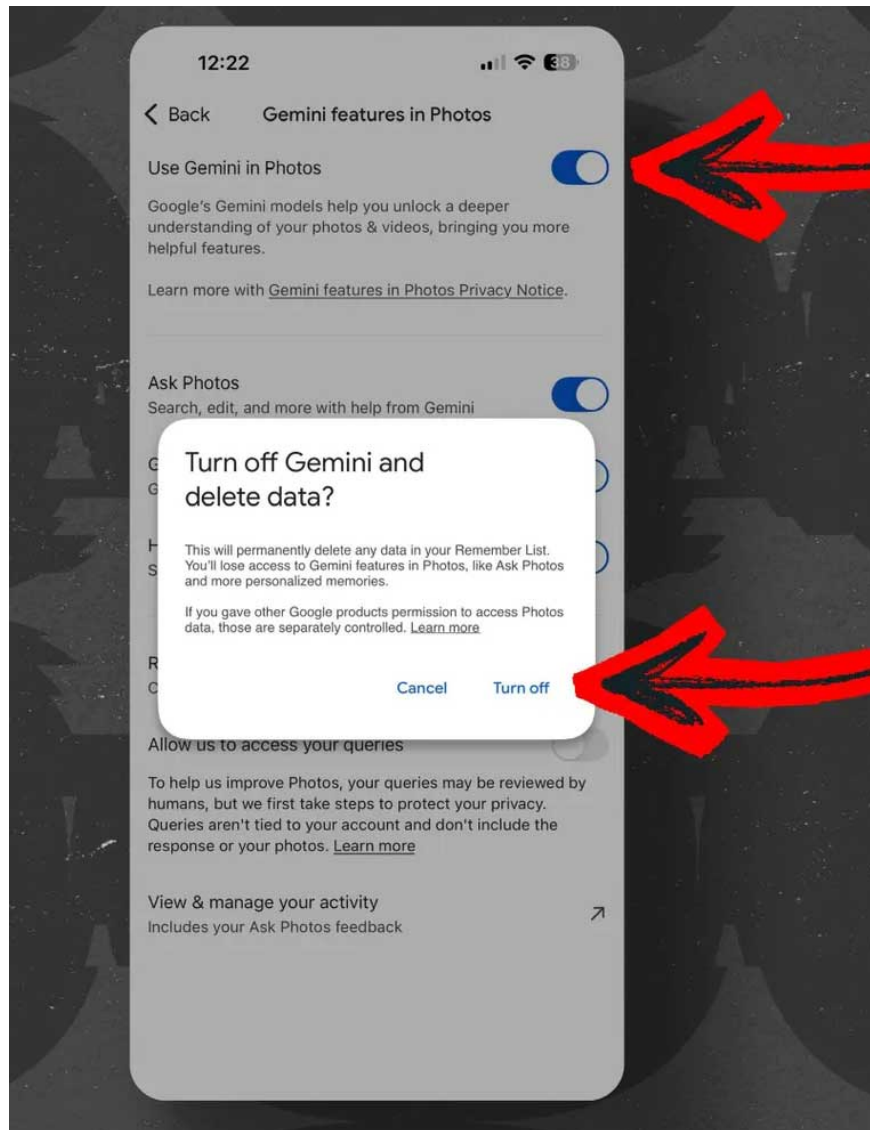
## 2. Turn off Gemini in Google Photos

Even if you turn off Gemini in Gmail, Gemini may still work in Google Photos. This is because Google Photos has its own settings.

To turn off Gemini in Google Photos, follow these steps:

1. Open the Google Photos app on your phone.
2. Click on your profile picture.
3. Go to Google Photos Settings
4. Select Preferences
5. Select Gemini features in Photos
6. Turn off the "Use Gemini in Photos" option.

Once turned off, AI-powered features like Ask Photos or Memories will disappear, and Google Photos will revert to its traditional search interface.



### 3. Turn off Gemini in Chrome.

Gemini in Chrome is still being rolled out gradually and is not yet available to all users. This feature allows you to chat with AI directly in the browser, summarize articles, or get support while browsing the web.

If you don't want to use Gemini in Chrome, follow these steps:

1. Open Chrome
2. Click on the three-dot icon.
3. Select Settings
4. Go to the AI ??innovations section.
5. Select Gemini in Chrome

Here, you can turn off options including:

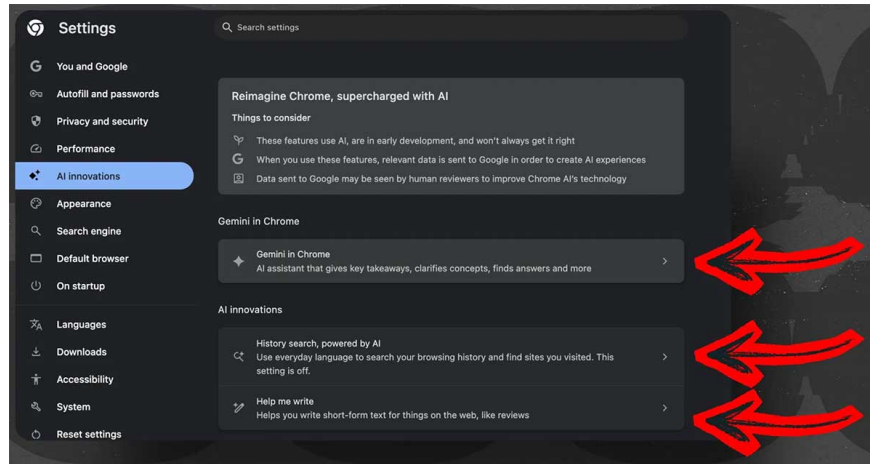
1. Show Gemini at the top of the browser
2. Show Gemini in Mac menu bar and turn on keyboard shortcut

### 3. Let Chrome browse for you

Then go back to the AI ??innovations section and turn off two more options:

1. History search powered by AI
2. Help me write

Once completed, Gemini will be disabled in Chrome.



## Should I turn off Gemini?

Whether or not to turn Gemini off depends on your needs. If you like AI features like email summarization, content suggestions, or writing assistance, Gemini will be quite useful.

Conversely, if you want a simpler, more private experience or want to avoid new AI features, turning off Gemini is a sensible option.

The good news is that Google still lets users control these features — although the options can sometimes be a little hard to find.

You finished reading the article "**The quickest way to disable Gemini in Gmail, Google Photos, and Chrome.**" edited by the [TipsMake](#) team. We hope this article has provided you with many useful tech tips and tricks. You can search for similar articles on tips and guides. Thank you for reading and for following us regularly.